

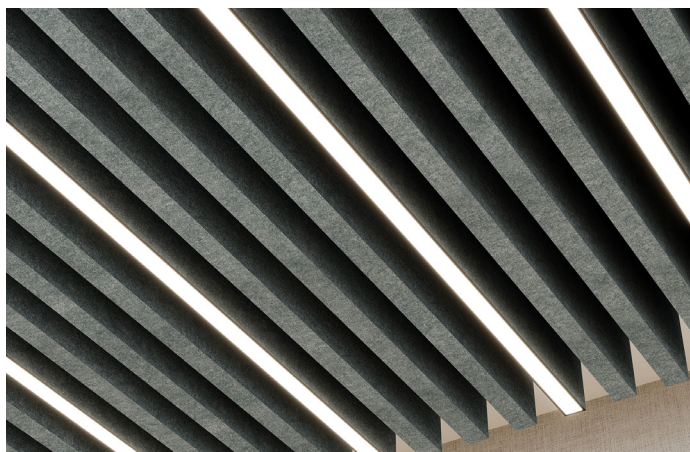
Truss LED Ceiling Baffles

Essentials Collection

The Essentials Collection Truss LED Ceiling Baffles features sound-absorbing baffles with embedded diffused LED channels, effectively reducing noise while providing efficient illumination. Truss ceiling baffles with integrated LED lighting create a sleek, aerodynamic aesthetic that can be used anywhere. Acoufelt's advanced manufacturing technology allows you to choose from standard lighting options or integrate lighting components of your own.

Specifications

Surface	Ceiling
Material	WhisperTex™ polyester felt
Thickness	3/8", 9mm (±10%)
Weight	0.34 lb./ft² (±10%)
Standard Sizes	Height: 3" up to 20" H (1" increments) Depth: 3" up to 12" D (1" increments) Length: 12" up to 108" L (6" increments), 110" L <i>See page 4 for more details. Custom sizes available</i>



Truss LED Ceiling Baffle in Jade

Technical

NRC Rating	Pending product testing
Fire Test	ASTM E84, Class 1 Flame spread index: 7 Smoke developed index: 160
Colorfastness	ISO 105-B02, 4

Details

Lead Time	3 – 6 weeks
Origin	Manufactured and assembled in the US
Warranty	Product: 12 years* Colorfastness: 12 years*

* Conditions apply

Environmental

Recycled Content	Minimum 55%
Indoor Air Quality	VOC less than/equal to 0.5mg/m3
Recyclable	100%*
Certifications	TVOC Emissions Rate

* PET is recyclable through participating partners.



ESSENTIALS



Talc
TA08



Limestone
LI07



Silt
SI06



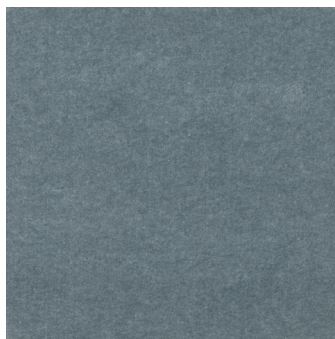
Shale
SH03



Pumice
PU05



Gypsum
GY04



Jade
JA02



Basalt
BA01

Order samples at acoufelt.com/colorways



Call **800.966.8557** with questions or visit **acoufelt.com** for more product information, downloads, and colorways.

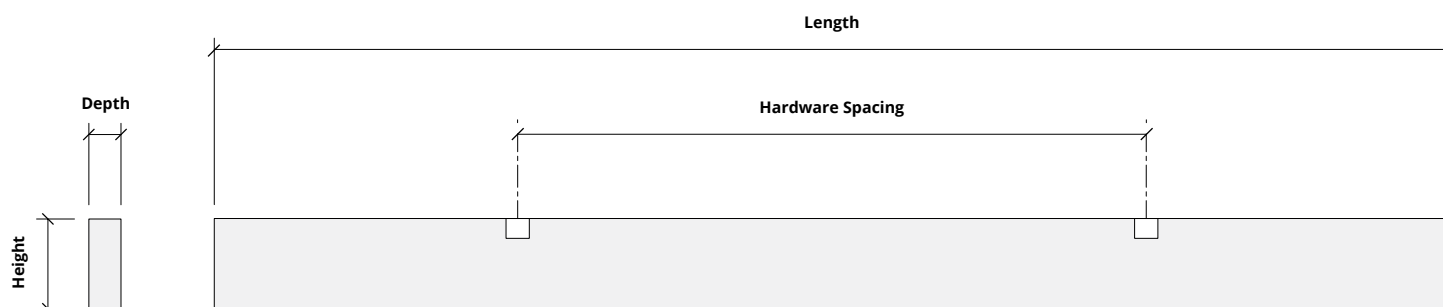
Sizes

Standard Sizes Height: 3" up to 20" H (1" increments)
 Depth: 3" up to 12" D (1" increments)
 Length: 12" up to 108" L (6" increments), 110" L
Custom sizes available

Thickness 3/8", 9mm (±10%)

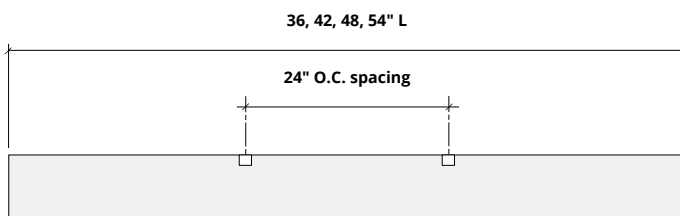
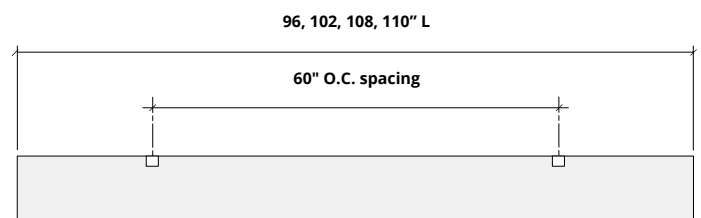
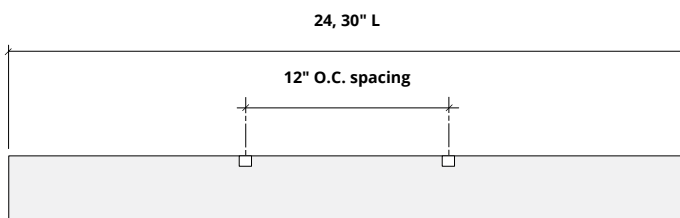
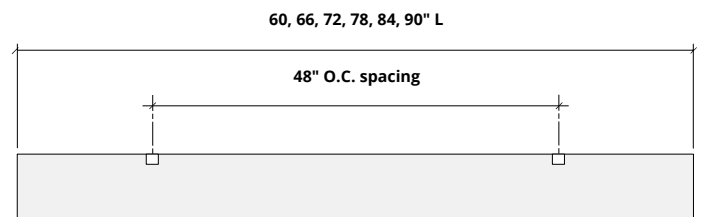
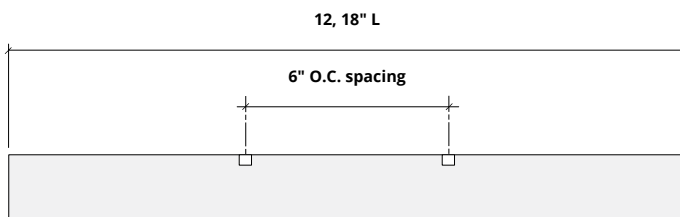
	3"H	4"H	5"H	6"H	7"H	8"H	9"H	10"H	11"H	12"H	13"H	14"H	15"H	16"H	17"H	18"H	19"H	20"H
3"D																		
4"D																		
5"D																		
6"D																		
7"D																		
8"D																		
9"D																		
10"D																		
11"D																		
12"D																		

 Standard sizes



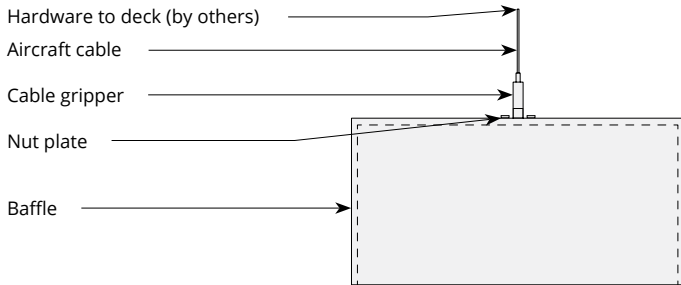
Hardware Spacing

12, 18" L	6" on center spacing
24, 30" L	12" on center spacing
36, 42, 48, 54" L	24" on center spacing
60, 66, 72, 78, 84, 90" L	48" on center spacing
96, 102, 108, 110" L	60" on center spacing

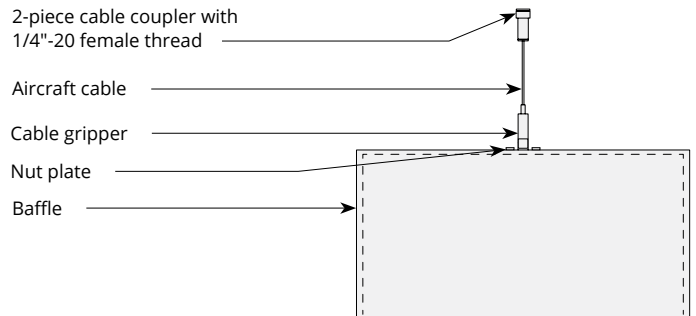


Mounting Methods

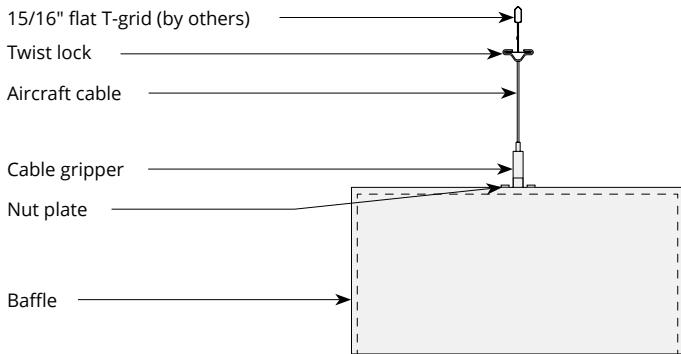
Cable



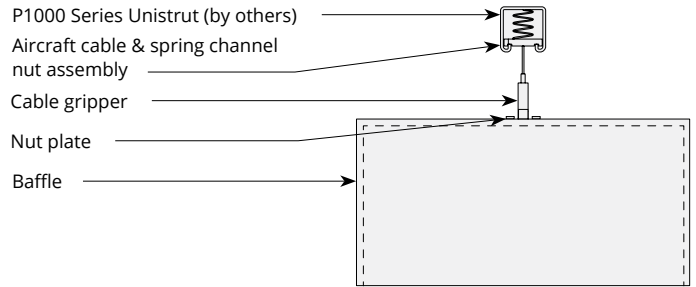
Cable to deck



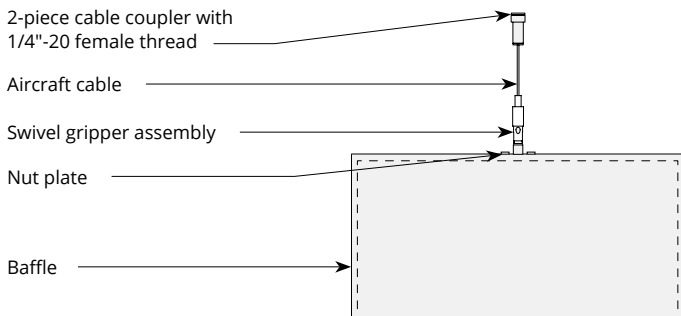
Cable to T-grid



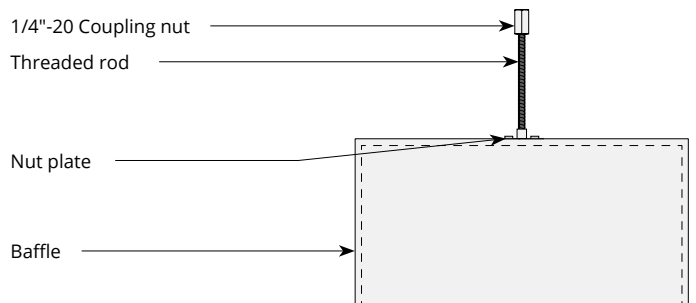
Cable to Unistrut



Swivel cable to deck

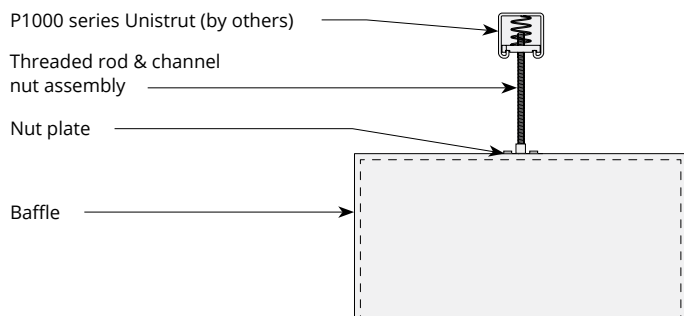


Threaded rod



Mounting Methods cont'd.

Threaded rod to Unistrut



Twist lock to T-grid

