

# Essentials Collection

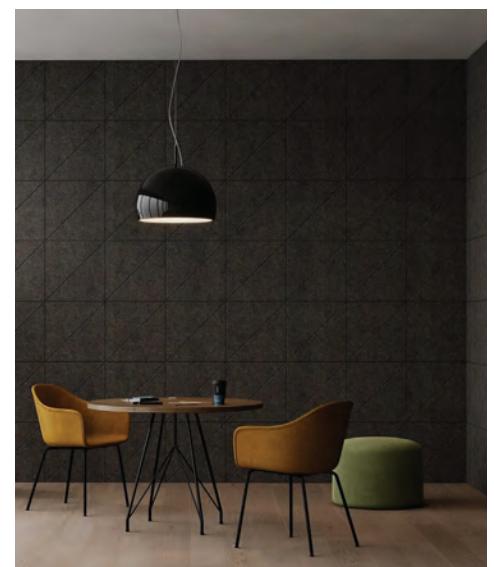
## Exactly what you need

The practical solution for busy offices, gathering areas and lobbies in education, healthcare, and more. With a range of classic colors and designs and a lightly napped inviting texture, the Acoufelt Essentials Collection makes it easy to incorporate the benefits of proven sound management into crowded environments. Choose cost-effective soft architecture created with an eye toward sustainability and wellbeing.

<b>Available colors</b>	8
<b>Material</b>	Polyester felt
<b>Recycled Content</b>	Minimum of 55%
<b>Thickness</b>	9, 18mm
<b>Origin</b>	Manufactured and assembled in the USA

Below: Talc, Basalt, Silt, Shale;

Right: Fracture Fine Line Wall Panels in Talc; Lower right: Right Triangle Wall Tiles in Shale



## ESSENTIALS



Talc  
TA08



Limestone  
LI07



Silt  
SI06



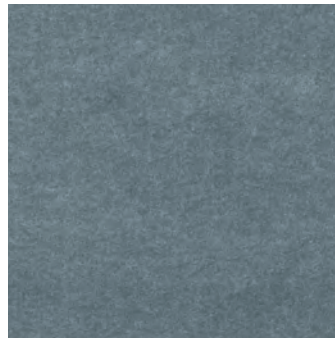
Shale  
SH03



Pumice  
PU05



Gypsum  
GY04



Jade  
JA02



Basalt  
BA01

	PREMIER	ESSENTIALS	NATURALS	WOODGRAIN
<b>Available colors</b>	45	8	21	30
<b>Material</b>	FilaSorb™ polyester felt	<b>Polyester felt</b>	100% wool	FilaSorb™ polyester felt
<b>Recycled content</b>	Minimum of 60%	<b>Minimum of 55%</b>	-	Minimum of 60%
<b>Thicknesses</b>	2, 7, 9, 12, 24, 25, 50mm*	<b>9, 18mm</b>	12mm (3mm Naturals + 9mm Essentials)**	12, 24mm
<b>Origin</b>	Manufactured and assembled in the USA	<b>Manufactured and assembled in the USA</b>	Manufactured and assembled in the USA	Manufactured and assembled in the USA

\* 2, 7, 9, 25, and 50mm thicknesses are limited to Solid Wall Panels

\*\* Products in the Naturals Collection use a 9mm Essentials backer. 3mm Naturals is also available as a rolled Wallcovering.

Call **800.966.8557** with questions or visit **acoufelt.com** for more product information, downloads, and colorways.