



PopUp Wall Tiles

Premier Collection

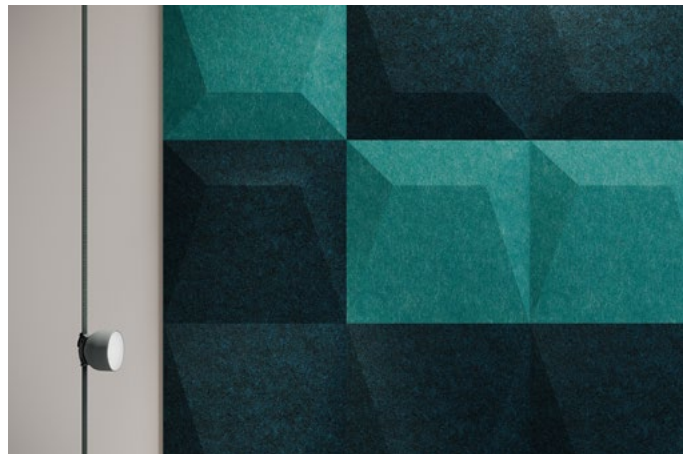
Enhance any space with visual intrigue and effective sound control using sculptural, lightweight PopUp Wall Tiles. Designed for creative flexibility, PopUp Tiles are perfect for both large and small spaces—cover expansive areas for maximum sound absorption or craft smaller installations to add visual interest to empty walls. Combining bold aesthetics with significant acoustic performance, PopUp Tiles are the ideal solution for acoustically challenging environments.

Specifications

Surface	Wall
Material	FilaSorb™ polyester felt
Thickness	1/2", 12mm (±10%)
Weight	12mm, 0.49 lb./ft ² (±10%)
Standard Sizes	Width: 4, 12, 24" W Height: 12, 24" H Depth: 2, 3" D



PopUp Wall Tiles with Slant Pattern with in Kale and Thistle



PopUp Wall Tiles with Roof Pattern in Denim and Peacock

Technical

NRC Rating	Pending product testing
Fire Test	ASTM E84, Class A Flame spread index: 15 Smoke developed index: 200
Water Sorption	ASTM C1104-2019 (A Modified) Water sorbed by weight: 0.20% (based on a 12mm thick panel)
Colorfastness	ISO 105-B02, 6-7

Details

Lead Time	3 – 6 weeks
Origin	Manufactured and assembled in the US
Warranty	Product: 20 years* Colorfastness: 20 years*

* Conditions apply

Environmental

Recycled Content	Minimum 60%
Energy	Generated using 40% solar energy
Indoor Air Quality	VOC less than/equal to 0.5mg/m ³
Recyclable	100%*
Certifications	Declare Certification - LBC Red List Free (third-party verified) SCS Global Indoor Advantage Gold

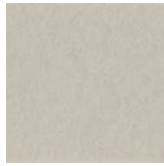


Colorways

PREMIER



White
WH12



Almond
AL55



Celery
CE65



Sencha
SE58



Metal
ME03



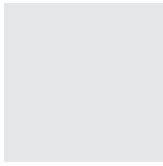
Flamingo
FL61



Quartz
QU67



Turmeric
TU60



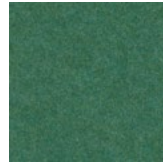
Platinum
PL04



Pearl
PE21



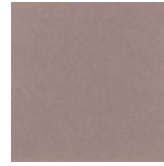
Pistachio
PI25



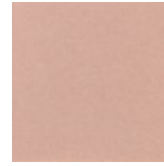
Thistle
TH28



Stonewash
ST72



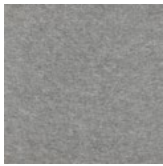
Amethyst
AM69



Valentine
VA70



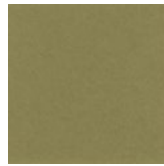
Wheat
WH68



Grey
GR02



Ivory
IV11



Eucalyptus
EU71



Peacock
PE20



Periwinkle
PE23



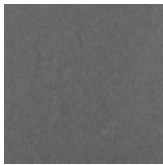
Lilac
LI13



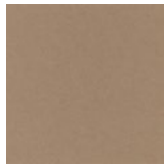
Peach
PE19



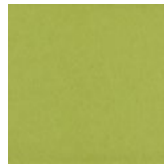
Popcorn
PO26



Slate
SL27



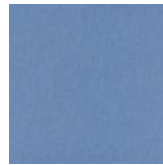
Umber
UM54



Wasabi
WA29



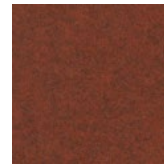
Sea Salt
SE57



Marine
MA15



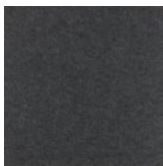
Berry
BE06



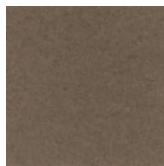
Peppercorn
PE22



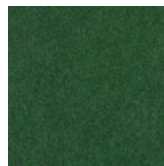
Carrot
CA08



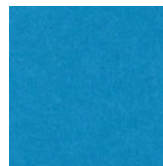
Charcoal
CH01



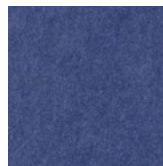
Walnut
WA56



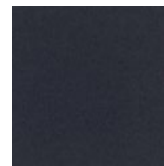
Oregano
OR18



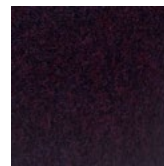
Azure
AZ05



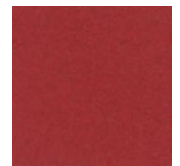
Iris
IR10



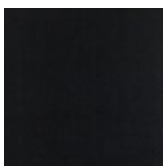
Flint
FL64



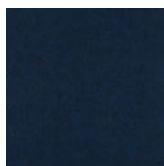
Shiraz
SH63



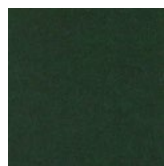
Currant
CU59



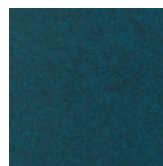
Piano Black
PI24



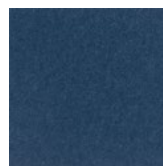
Midnight
MI16



Kale
KA12



Denim
DE09



Granite
GR62

Order samples at acoufelt.com/colorways

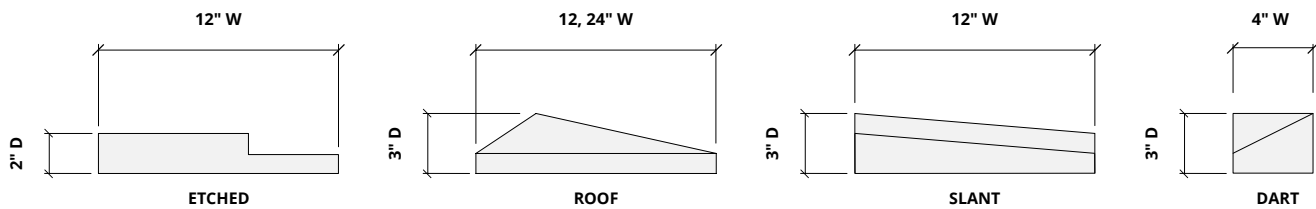


Call 800.966.8557 with questions or visit acoufelt.com for more product information, downloads, and colorways.

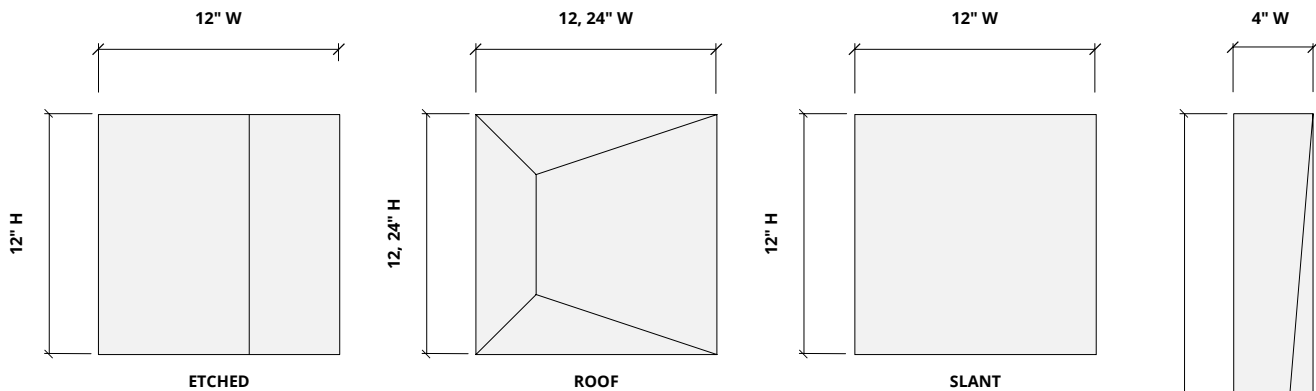
Sizes

Standard Sizes	Width: 4, 12, 24" W Height: 12, 24" H Depth: 2, 3" D
Thickness	1/2", 12mm (±10%)

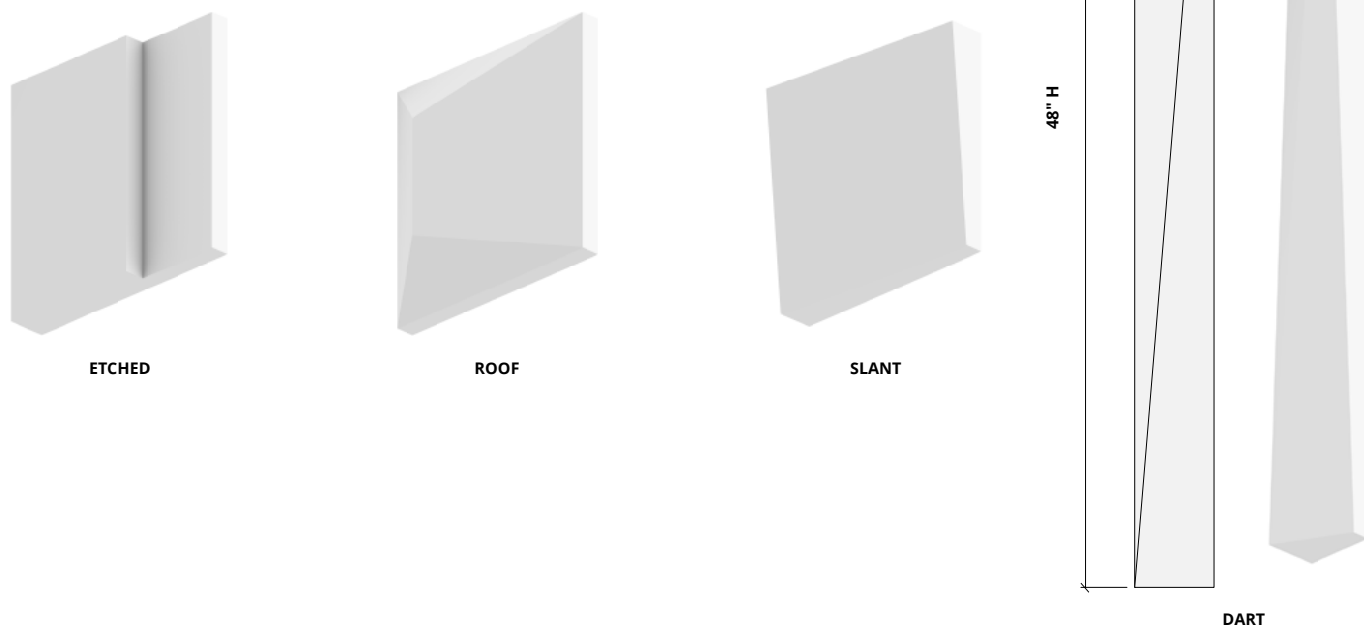
Plan



Elevations

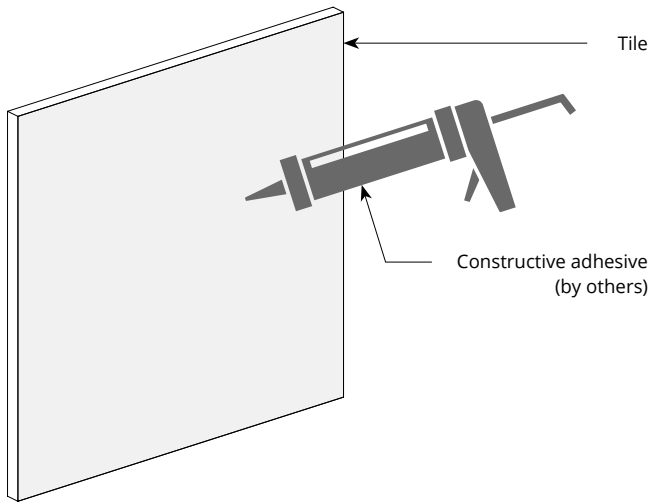


Perspectives



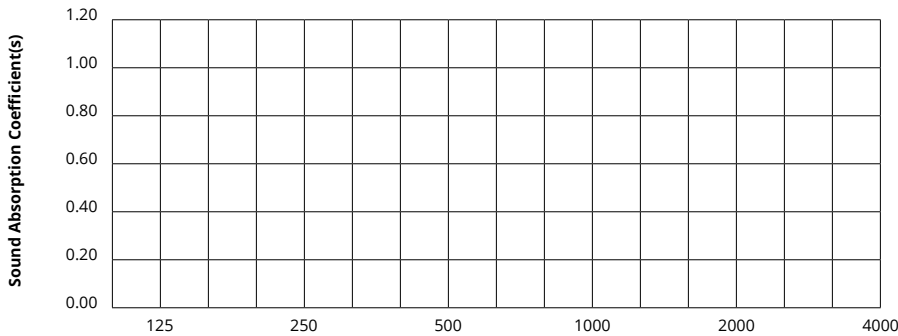
Mounting Methods

Construction adhesive



Acoustic Performance

Test Method	ISO 354-2006
Install Method	Type A
Mounting Method	No air gap
Rating Method	ISO 11654-1997
Test Results	Pending product testing



Frequency f (Hz)	125	250	500	1000	2000	4000	NRC
12mm	Pending product testing						

What is a Noise Reduction Coefficient (NRC)?

You'll find the NRC rating in the specifications of all of our products. This acronym stands for Noise Reduction Coefficient, and is expressed as a single number, a rating that describes the degree to which acoustic products can absorb sound.

You can use NRC values to understand the overall performance of our acoustic wall and ceiling products. The higher the NRC, the better the product is at soaking up the sound.

Performance Indices: Noise Reduction Coefficient (NRC) results represent the absorption coefficients measured at the one third octave bands at 125, 250, 500, 1000, 2000 and 4000 Hz rounded to the nearest 0.05. Acoustic testing has been performed according to the methods mentioned above. Customization of installation of the product could alter the results. Sound Absorption Average (SAA) indicates the absorption coefficient average for the twelve one-third octave bands ranging between 200 and 2500 Hz.