

PopUp Wall Tiles

Naturals Collection

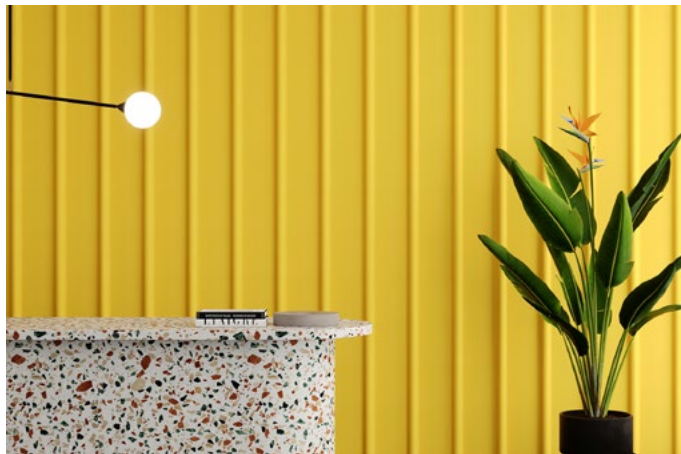
Enhance any space with visual intrigue and effective sound control using sculptural, lightweight PopUp Wall Tiles. Designed for creative flexibility, PopUp Tiles are perfect for both large and small spaces—cover expansive areas for maximum sound absorption or craft smaller installations to add visual interest to empty walls. Combining bold aesthetics with significant acoustic performance, PopUp Tiles are the ideal solution for acoustically challenging environments.

Specifications

Surface	Wall
Material	100% wool
Thickness	1/2", 12mm (±10%)
Weight	12mm, 0.49 lb./ft ² (±10%) 3mm Naturals + 9mm Essentials
Standard Sizes	Width: 12" W Height: 12" H Depth: 2, 2-1/2" D



PopUp Wall Tiles with Teardrop Pattern in Indigo



PopUp Wall Tiles with Tubular Pattern in Zest

Technical

NRC Rating	Testing is pending
Fire Test	ASTM E84, Class 1 Flame spread index: 7 Smoke developed index: 160
Colorfastness	ISO 105-B02, 4
Certifications	100% Mulesing-free pure wool

Details

Lead Time	3 – 6 weeks
Origin	Manufactured and assembled in the US
Warranty	Product: 10 years*

* Conditions apply

Environmental

Indoor Air Quality	VOC less than/equal to 0.5mg/m3
Recyclable	100%*
Certifications	Oeko-Tex® Standard 100 Certified Product Class II (100% Wool Design Felt)

* Wool is recyclable through participating partners.



Call **800.966.8557** with questions or visit **acoufelt.com** for more product information, downloads, and colorways.

Colorways

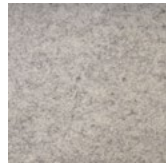
NATURALS



Coconut
CO02



Fog
FO01



Ash
AS08



Wintergreen
WI06



Grassland
GR07



Zest
ZE04



Fox
FO05



Shell
SH10



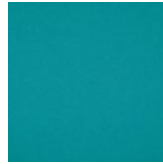
Fawn
FA03



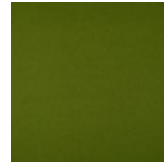
Cliffside
CL15



Indigo
IN20



Ocean
OC13



Hedge
HW14



Tapenade
TA11



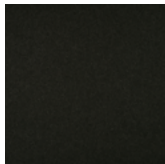
Amaryllis
AM12



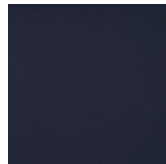
Mulberry
MU17



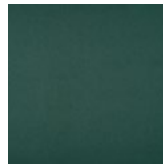
Thicket
TH09



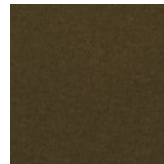
Raven
RA1



Night Sky
NI19



Balsam
BA21



Kelp
KE18

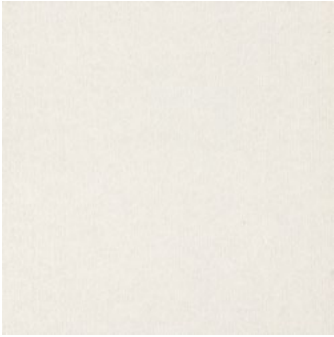
Order samples at acoufelt.com/colorways



Call 800.966.8557 with questions or visit acoufelt.com for more product information, downloads, and colorways.

Colorways

ESSENTIALS



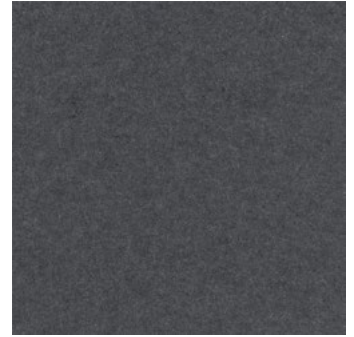
Talc
TA08



Limestone
LI07



Silt
SI06



Shale
SH03



Pumice
PU05



Gypsum
GY04



Jade
JA02



Basalt
BA01

Order samples at acoufelt.com/colorways



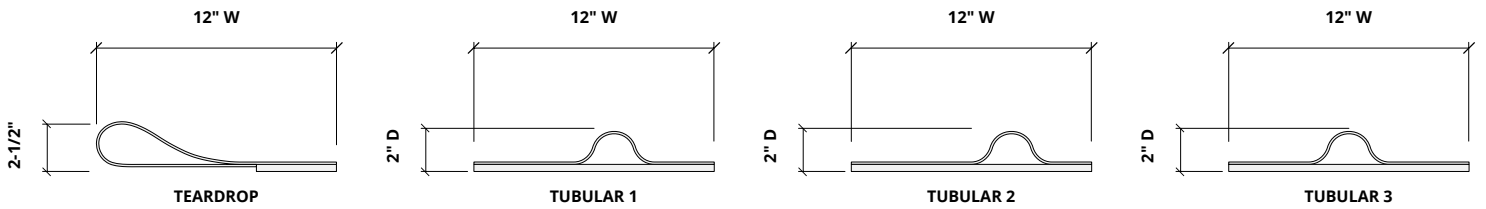
Call **800.966.8557** with questions or visit acoufelt.com for more product information, downloads, and colorways.

Sizes

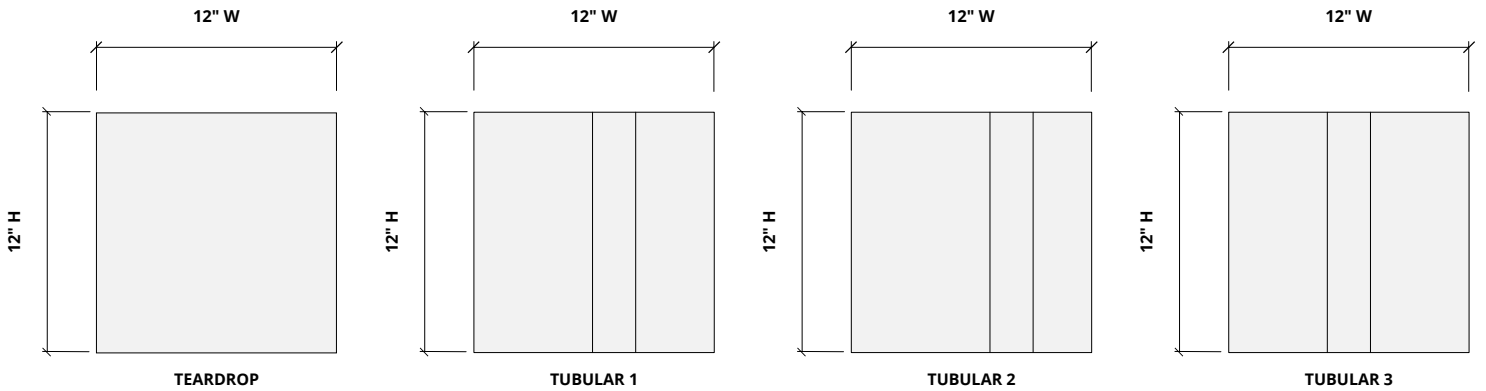
Standard Sizes Width: 12" W
 Height: 12" H
 Depth: 2, 2-1/2" D

Thickness 1/2", 12mm (±10%)
 3mm *Naturals* + 9mm *Essentials*

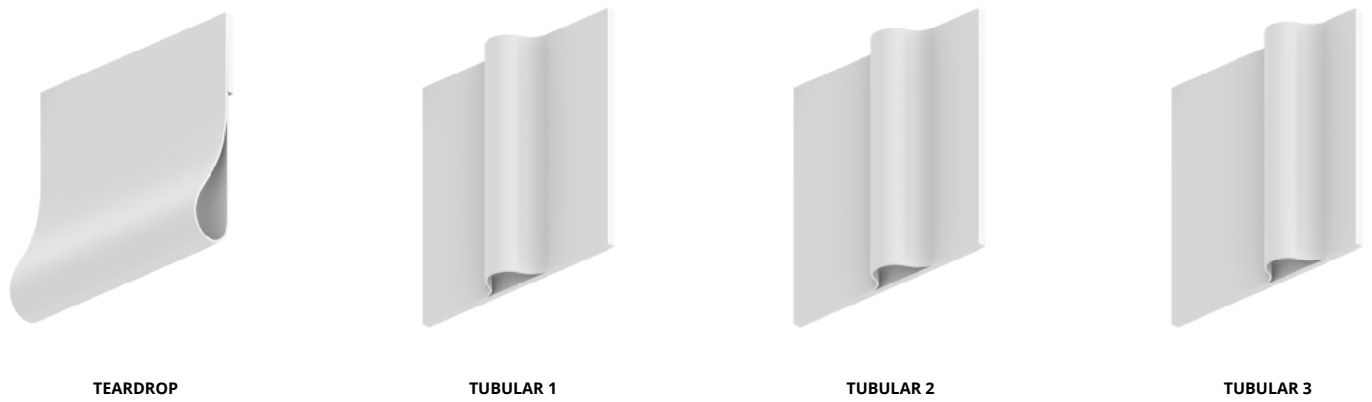
Plan



Elevations

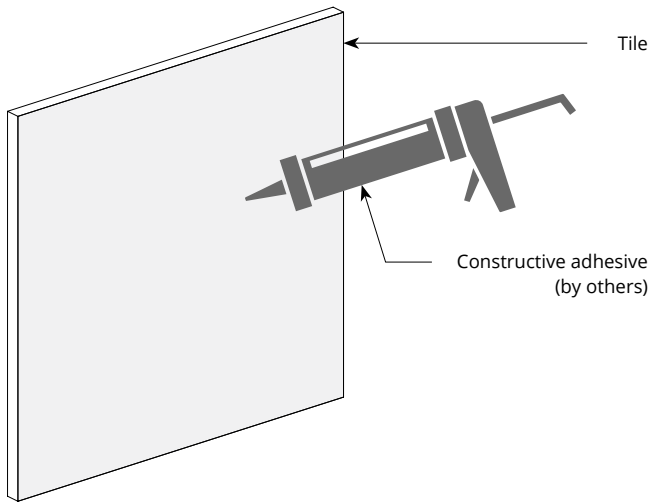


Perspectives



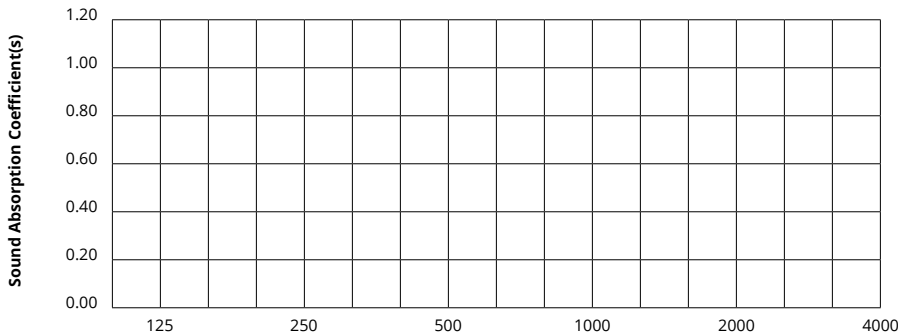
Mounting Methods

Construction adhesive



Acoustic Performance

Test Method	ISO 354-2006
Install Method	Type A
Mounting Method	No air gap
Rating Method	ISO 11654-1997
Test Results	Pending product testing



Frequency f (Hz)	125	250	500	1000	2000	4000	NRC
12mm	Pending product testing						

What is a Noise Reduction Coefficient (NRC)?

You'll find the NRC rating in the specifications of all of our products. This acronym stands for Noise Reduction Coefficient, and is expressed as a single number, a rating that describes the degree to which acoustic products can absorb sound.

You can use NRC values to understand the overall performance of our acoustic wall and ceiling products. The higher the NRC, the better the product is at soaking up the sound.

Performance Indices: Noise Reduction Coefficient (NRC) results represent the absorption coefficients measured at the one third octave bands at 125, 250, 500, 1000, 2000 and 4000 Hz rounded to the nearest 0.05. Acoustic testing has been performed according to the methods mentioned above. Customization of installation of the product could alter the results. Sound Absorption Average (SAA) indicates the absorption coefficient average for the twelve one-third octave bands ranging between 200 and 2500 Hz.