

SoftenUp, Foothill Wall Panels

WoodGrain Collection

SoftenUp™ wall panels bring warmth and clarity to any space by effectively reducing noise while seamlessly covering wall seams and imperfections. The Foothill design features rounded linear slats that add a soft, contemporary touch and is available in a range of colors to suit any décor. With simple installation, SoftenUp panels provide a creative and hassle-free acoustic

Specifications

Surface	Wall	
Material	FilaSorb™ polyester felt	
Thickness	1/2", 12mm (±10%)	
Weight	0.49 lb./ft ² (±10%)	
Standard Sizes	Slat Profiles	Backer Panels
	2" T x 3" D	24" W x 24" H
		24" W x 48" H
		24" W x 96" H
		24" W x 108" H



SoftenUp, Foothill Wall Panels in Loft

Technical

NRC Rating	0.95
	0.95, 5mm air gap
	1.00, 12mm air gap
	1.00, 3/4" air gap
Fire Test	ASTM E84, Class A
	Flame spread index: 15
	Smoke developed index: 200
Water Sorption	ASTM C1104-2019 (A Modified)
	Water sorbed by weight: 0.20% (based on a 12mm thick panel)
Colorfastness	ISO 105-B02, 6-7

Details

Lead Time	3 – 6 weeks
Origin	Manufactured and assembled in the US
Warranty	Product: 20 years*
	Colorfastness: 20 years*

* Conditions apply

Environmental

Recycled Content	Minimum 60%
Energy	Generated using 40% solar energy
Indoor Air Quality	VOC less than/equal to 0.5mg/m ³
Recyclable	100%*
Certifications	Environmental Product Declaration
	Declare Certification - LBC Red List Free (third-party verified)
	SCS Global Indoor Advantage Gold

* PET is recyclable through participating partners.

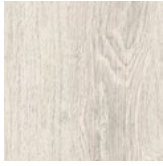


Colorways

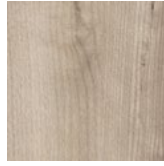
WOODGRAIN



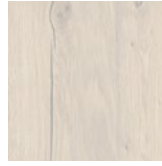
Boat Shed
WQ02



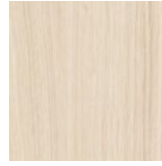
Picket Fence
WQ01



Loft
WQ06



Nordic Plank
WQ15



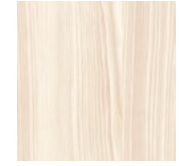
White Oak
WQ13



Baltic Birch
WQ12



White Elm
WQ07



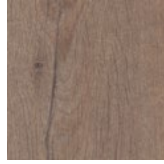
Lyed Larch
WQ30



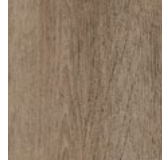
Woodland Fog
WQ22



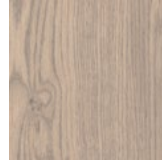
Weathered Slate
WQ14



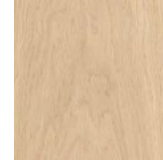
French Bobbin
WQ08



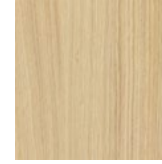
Boardwalk
WQ10



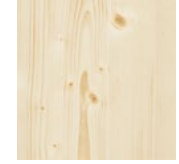
Mountain Lodge
WQ24



Wine Barrel
WQ03



Natural Oak
WQ16



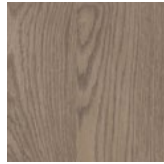
Knotty Spruce
WQ29



Shadow Oak
WQ28



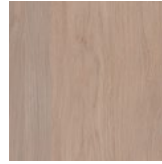
Driftwood
WQ21



Mocha Legno
WQ25



Teak
WQ18



Fumed Oak
WQ19



European Larch
WQ17



Petrified Ash
WQ23



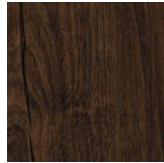
Log Cabin
WQ04



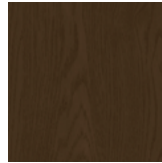
Charred Larch
WQ09



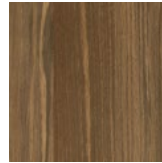
Barn Door
WQ05



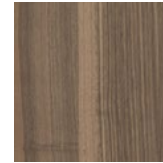
Antique Chest
WQ11



Scorched Timber
WQ26



Espresso Oak
WQ27



Black Walnut
WQ20

Order samples at acoufelt.com/colorways

Colorways

PREMIER



White
WH12



Almond
AL55



Pistachio
PI25



Celery
CE65



Metal
ME03



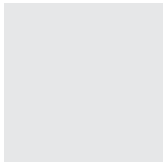
Flamingo
FL61



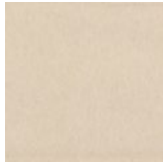
Quartz
QU67



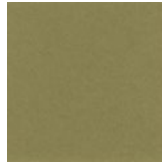
Turmeric
TU60



Platinum
PL04



Pearl
PE21



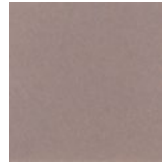
Eucalyptus
EU71



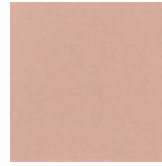
Sencha
SE58



Periwinkle
PE23



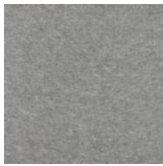
Amethyst
AM69



Valentine
VA70



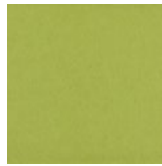
Wheat
WH68



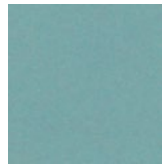
Grey
GR02



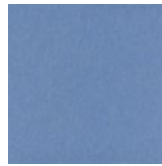
Ivory
IV11



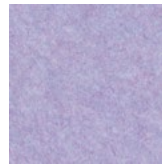
Wasabi
WA29



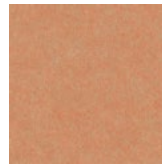
Sea Salt
SE57



Marine
MA15



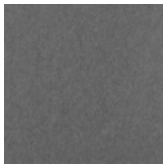
Lilac
LI13



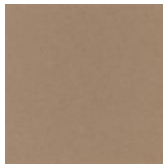
Peach
PE19



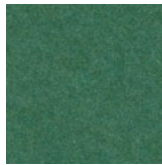
Popcorn
PO26



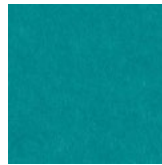
Slate
SL27



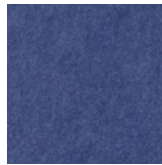
Umber
UM54



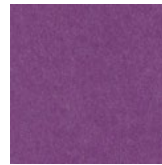
Thistle
TH28



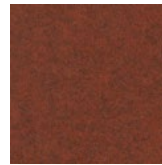
Peacock
PE20



Iris
IR10



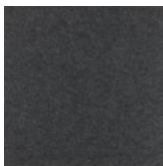
Berry
BE06



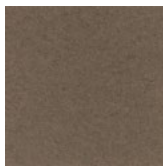
Peppercorn
PE22



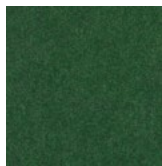
Carrot
CA08



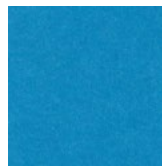
Charcoal
CH01



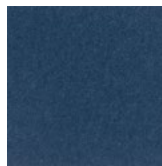
Walnut
WA56



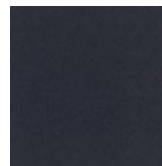
Oregano
OR18



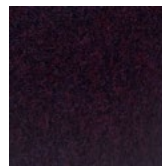
Azure
AZ05



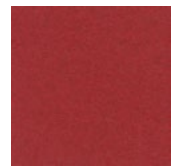
Granite
GR62



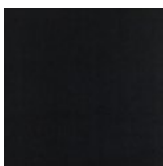
Flint
FL64



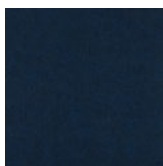
Shiraz
SH63



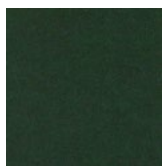
Currant
CU59



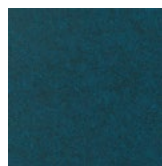
Piano Black
PI24



Midnight
MI16



Kale
KA12



Denim
DE09



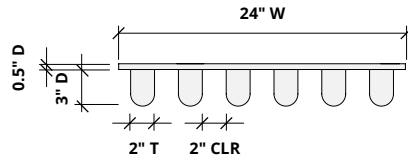
How to Specify

1. Choose Slat Size

2. Choose Backer Panel Size

3. Choose Colorways

Slats are available in one size:

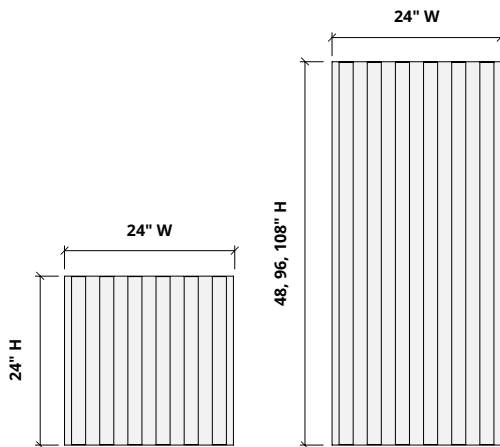


1. Choose Slat Size

2. Choose Backer Panel Size

3. Choose Colorways

Backer panels are available in four heights: 24, 48, 96 and 108" H.

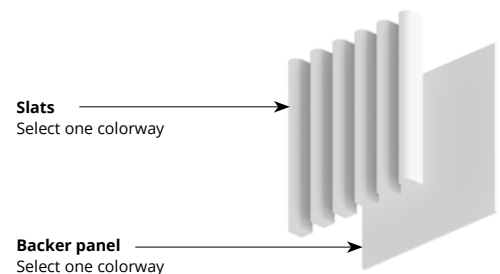


1. Choose Slat Size

2. Choose Backer Panel Size

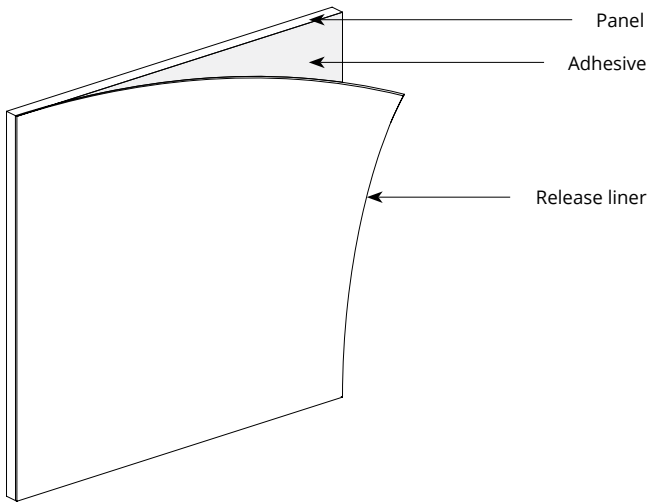
3. Choose Colorways

Select one colorway for your slats and one colorway for your backer panel.
See colorway choices on pages 3 and 4.

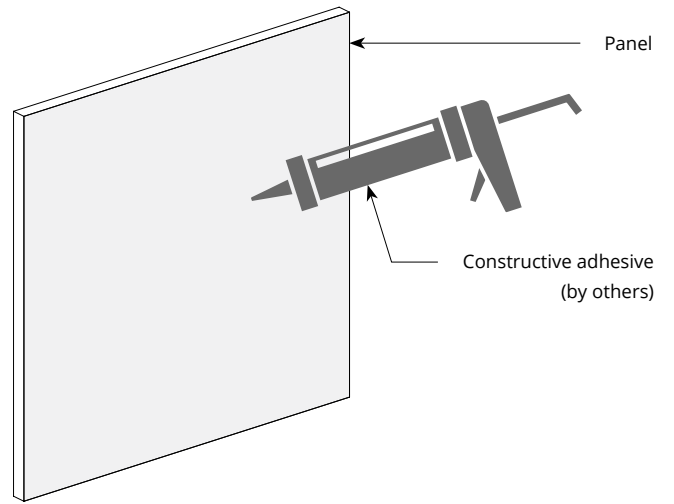


Mounting Methods

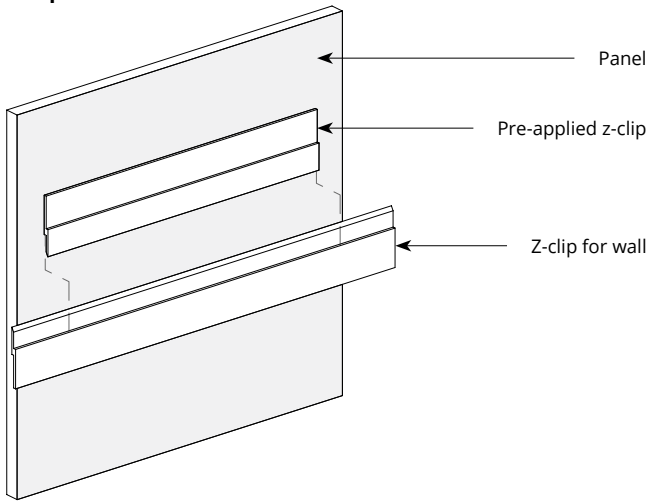
Adhesive backing



Construction adhesive



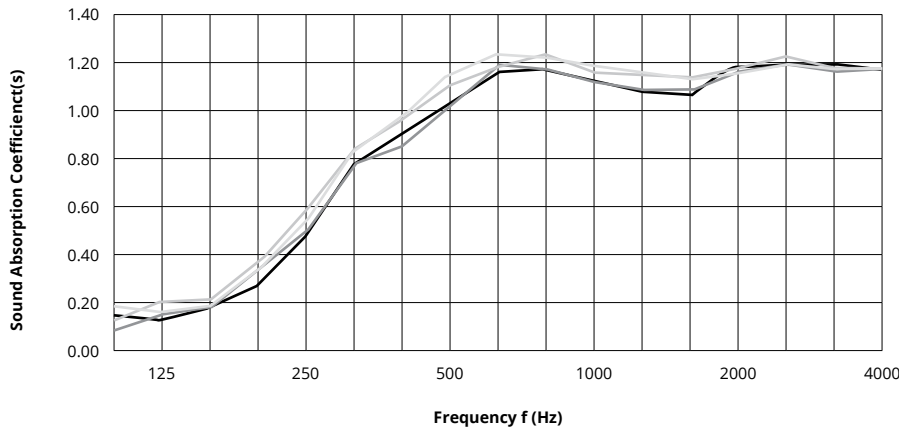
Z-clip wall mount



* For wall mount applications only.

Acoustic Performance

Test Method	ASTM E795
Install Method	Type E-400
Rating Method	ASTM C423
Mounting Method	2" T x 3" D slat on 12mm backer
Test Results	<p>NRC 0.95</p> <p>NRC 0.95, 5mm air gap</p> <p>NRC 1.00, 12mm air gap</p> <p>NRC 1.00, 3/4" air gap</p> <p>SAA 0.95, no air gap</p> <p>SAA 0.97, 5mm air gap</p> <p>SAA 1.00, 12mm air gap</p> <p>SAA 1.01, 3/4" air gap</p>



	Frequency f (Hz)	125	250	500	1000	2000	4000	NRC
	12mm	0.17	0.49	1.03	1.12	1.17	1.16	0.95
	12mm, 5mm air gap	0.19	0.53	1.03	1.13	1.17	1.18	0.95
	12mm, 12mm air gap	0.15	0.22	1.10	1.15	1.16	1.16	1.00
	12mm, 3/4" air gap	0.27	0.59	1.13	1.17	1.14	1.16	1.00

What is a Noise Reduction Coefficient (NRC)?

You'll find the NRC rating in the specifications of all of our products. This acronym stands for Noise Reduction Coefficient, and is expressed as a single number, a rating that describes the degree to which acoustic products can absorb sound.

You can use NRC values to understand the overall performance of our acoustic wall and ceiling products. The higher the NRC, the better the product is at soaking up the sound.

Performance Indices: Noise Reduction Coefficient (NRC) results represent the absorption coefficients measured at the one third octave bands at 125, 250, 500, 1000, 2000 and 4000 Hz rounded to the nearest 0.05. Acoustic testing has been performed according to the methods mentioned above. Customization of installation of the product could alter the results. Sound Absorption Average (SAA) indicates the absorption coefficient average for the twelve one-third octave bands ranging between 200 and 2500 Hz.