

## SoftenerUp, Peak Wall Panels

WoodGrain Collection

SoftenerUp™ wall panels enhance any space with a warm, polished look, effectively reducing unwanted noise while hiding wall seams and imperfections. The Peak design features angular linear slats for a contemporary touch and comes in a variety of colors to complement any décor. Designed for effortless installation, SoftenerUp panels offer a stylish and versatile acoustic wall solution for any

## Specifications

<b>Surface</b>	Wall	
<b>Material</b>	FilaSorb™ polyester felt	
<b>Thickness</b>	1/2", 12mm (±10%)	
<b>Weight</b>	0.49 lb./ft <sup>2</sup> (±10%)	
<b>Standard Sizes</b>	<b>Slat Profiles</b>	<b>Backer Panels</b>
	2" T x 3" D	24" W x 24" H 24" W x 48" H 24" W x 96" H 24" W x 108" H



SoftenUp, Peak Wall Panels in Weathered Slate

## Technical

<b>NRC Rating</b>	0.95 0.95, 5mm air gap 1.00, 12mm air gap 1.00, 3/4" air gap
<b>Fire Test</b>	ASTM E84, Class A Flame spread index: 15 Smoke developed index: 200
<b>Water Sorption</b>	ASTM C1104-2019 (A Modified) Water sorbed by weight: 0.20% (based on a 12mm thick panel)
<b>Colorfastness</b>	ISO 105-B02, 6-7

## Details

<b>Lead Time</b>	3 – 6 weeks
<b>Origin</b>	Manufactured and assembled in the US
<b>Warranty</b>	Product: 20 years* Colorfastness: 20 years*

\* Conditions apply

## Environmental

<b>Recycled Content</b>	Minimum 60%
<b>Energy</b>	Generated using 40% solar energy
<b>Indoor Air Quality</b>	VOC less than/equal to 0.5mg/m3
<b>Recyclable</b>	100%*
<b>Certifications</b>	Environmental Product Declaration Declare Certification - LBC Red List Free (third-party verified) SCS Global Indoor Advantage Gold

\* PET is recyclable through participating partners.

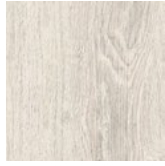


# Colorways

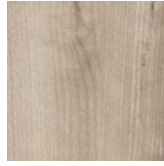
## WOODGRAIN



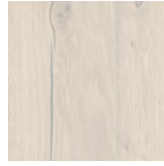
Boat Shed  
WQ02



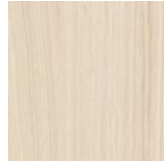
Picket Fence  
WQ01



Loft  
WQ06



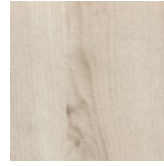
Nordic Plank  
WQ15



White Oak  
WQ13



Baltic Birch  
WQ12



White Elm  
WQ07



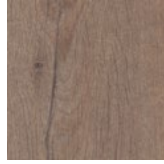
Lyed Larch  
WQ30



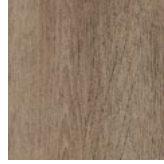
Woodland Fog  
WQ22



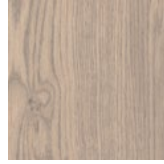
Weathered Slate  
WQ14



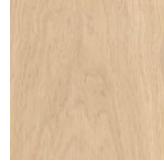
French Bobbin  
WQ08



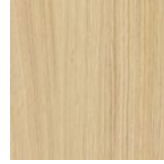
Boardwalk  
WQ10



Mountain Lodge  
WQ24



Wine Barrel  
WQ03



Natural Oak  
WQ16



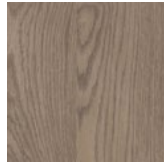
Knotty Spruce  
WQ29



Shadow Oak  
WQ28



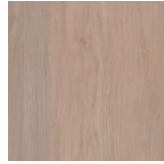
Driftwood  
WQ21



Mocha Legno  
WQ25



Teak  
WQ18



Fumed Oak  
WQ19



European Larch  
WQ17



Petrified Ash  
WQ23



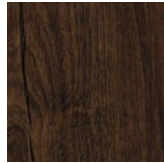
Log Cabin  
WQ04



Charred Larch  
WQ09



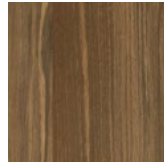
Barn Door  
WQ05



Antique Chest  
WQ11



Scorched Timber  
WQ26



Espresso Oak  
WQ27



Black Walnut  
WQ20

Order samples at [acoufelt.com/colorways](https://acoufelt.com/colorways)



Call 800.966.8557 with questions or visit [acoufelt.com](https://acoufelt.com) for more product information, downloads, and colorways.

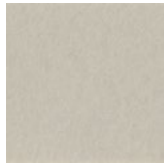


# Colorways

## PREMIER



White  
WH12



Almond  
AL55



Pistachio  
PI25



Celery  
CE65



Metal  
ME03



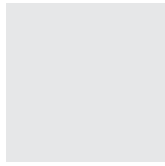
Flamingo  
FL61



Quartz  
QU67



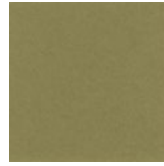
Turmeric  
TU60



Platinum  
PL04



Pearl  
PE21



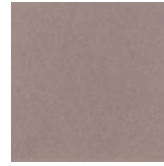
Eucalyptus  
EU71



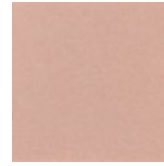
Sencha  
SE58



Periwinkle  
PE23



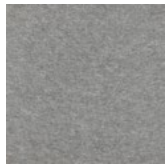
Amethyst  
AM69



Valentine  
VA70



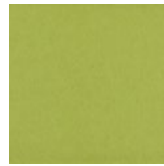
Wheat  
WH68



Grey  
GR02



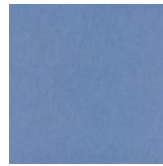
Ivory  
IV11



Wasabi  
WA29



Sea Salt  
SE57



Marine  
MA15



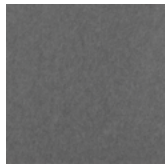
Lilac  
LI13



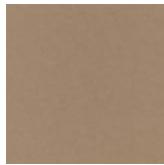
Peach  
PE19



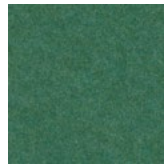
Popcorn  
PO26



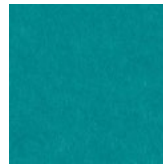
Slate  
SL27



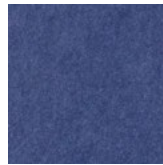
Umber  
UM54



Thistle  
TH28



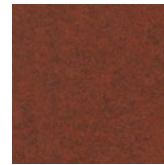
Peacock  
PE20



Iris  
IR10



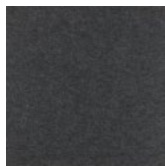
Berry  
BE06



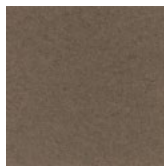
Peppercorn  
PE22



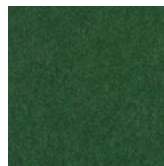
Carrot  
CA08



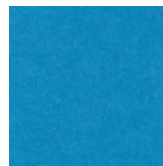
Charcoal  
CH01



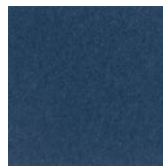
Walnut  
WA56



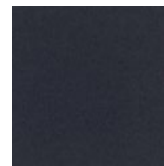
Oregano  
OR18



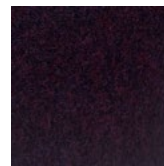
Azure  
AZ05



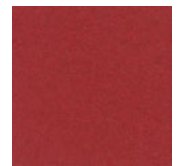
Granite  
GR62



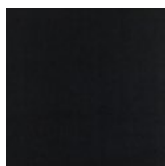
Flint  
FL64



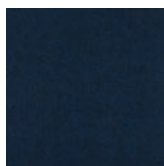
Shiraz  
SH63



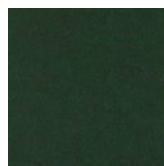
Currant  
CU59



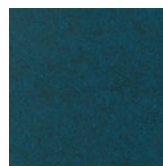
Piano Black  
PI24



Midnight  
MI16



Kale  
KA12



Denim  
DE09



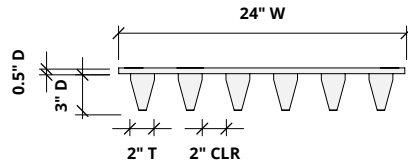
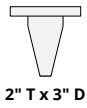
# How to Specify

## 1. Choose Slat Size

## 2. Choose Backer Panel Size

## 3. Choose Colorways

Slats are available in one size:

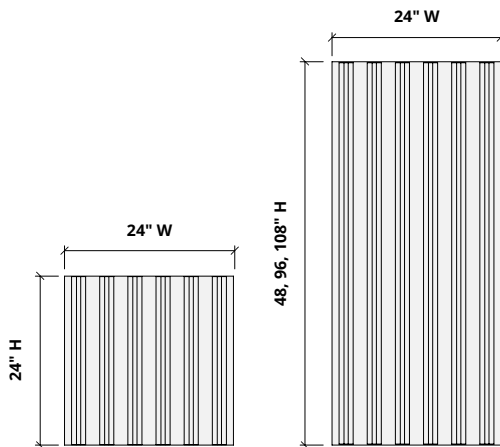


## 1. Choose Slat Size

## 2. Choose Backer Panel Size

## 3. Choose Colorways

Backer panels are available in four heights: 24, 48, 96 and 108" H.

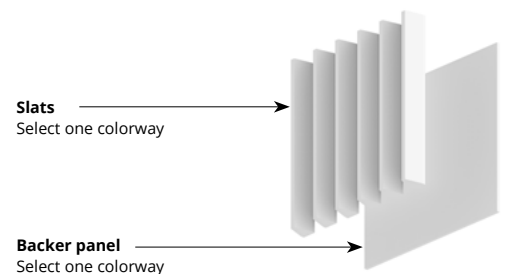


## 1. Choose Slat Size

## 2. Choose Backer Panel Size

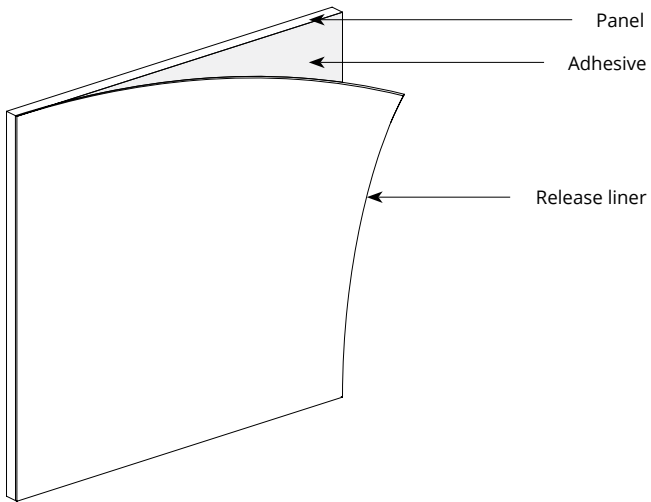
## 3. Choose Colorways

Select one colorway for your slats and one colorway for your backer panel.  
See colorway choices on page 3 and 4.

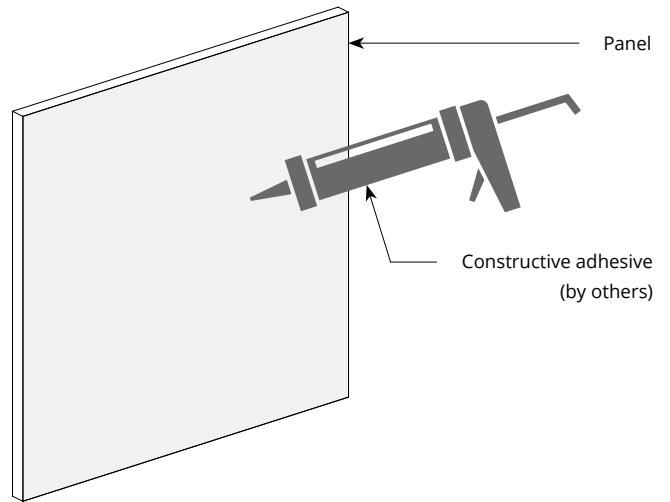


# Mounting Methods

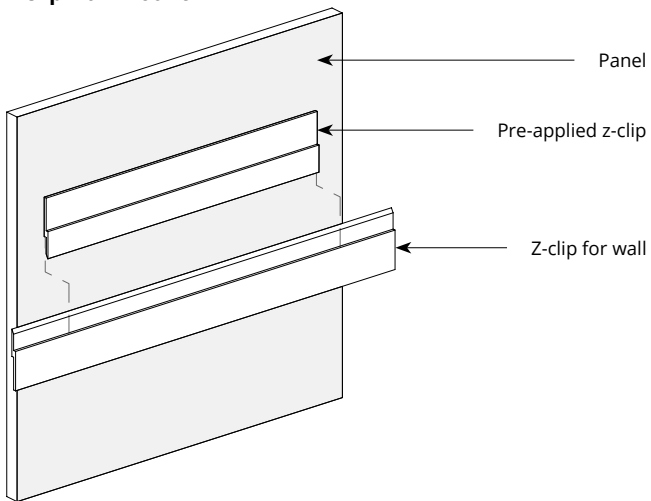
## Adhesive backing



## Construction adhesive



## Z-clip wall mount



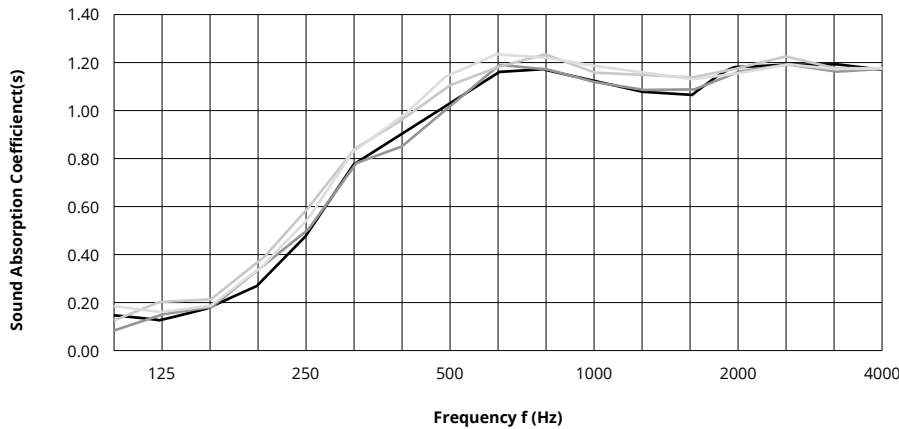
*\* For wall mount applications only.*



Call **800.966.8557** with questions or visit **acoufelt.com** for more product information, downloads, and colorways.

# Acoustic Performance

<b>Test Method</b>	ASTM E795
<b>Install Method</b>	Type E-400
<b>Rating Method</b>	ASTM C423
<b>Mounting Method</b>	2" T x 3" D slat on 12mm backer
<b>Test Results</b>	<p>NRC 0.95</p> <p>NRC 0.95, 5mm air gap</p> <p>NRC 1.00, 12mm air gap</p> <p>NRC 1.00, 3/4" air gap</p> <p>SAA 0.95, no air gap</p> <p>SAA 0.97, 5mm air gap</p> <p>SAA 1.00, 12mm air gap</p> <p>SAA 1.01, 3/4" air gap</p>



	Frequency f (Hz)	125	250	500	1000	2000	4000	NRC
	12mm	0.17	0.49	1.03	1.12	1.17	1.16	0.95
	12mm, 5mm air gap	0.19	0.53	1.03	1.13	1.17	1.18	0.95
	12mm, 12mm air gap	0.15	0.22	1.10	1.15	1.16	1.16	1.00
	12mm, 3/4" air gap	0.27	0.59	1.13	1.17	1.14	1.16	1.00

## What is a Noise Reduction Coefficient (NRC)?

You'll find the NRC rating in the specifications of all of our products. This acronym stands for Noise Reduction Coefficient, and is expressed as a single number, a rating that describes the degree to which acoustic products can absorb sound.

You can use NRC values to understand the overall performance of our acoustic wall and ceiling products. The higher the NRC, the better the product is at soaking up the sound.

*Performance Indices: Noise Reduction Coefficient (NRC) results represent the absorption coefficients measured at the one third octave bands at 125, 250, 500, 1000, 2000 and 4000 Hz rounded to the nearest 0.05. Acoustic testing has been performed according to the methods mentioned above. Customization of installation of the product could alter the results. Sound Absorption Average (SAA) indicates the absorption coefficient average for the twelve one-third octave bands ranging between 200 and 2500 Hz.*