

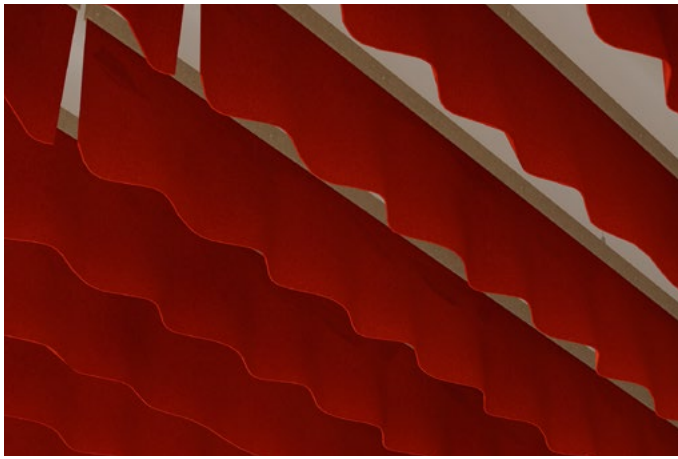
Breeze Ceiling Baffles

Naturals Collection

Enhance any space with visual dynamics and acoustic comfort using Breeze ceiling baffles. Suspended overhead in multiples, Breeze forms a graceful, natural layer of sound absorption. Available in a variety of sizes and a vibrant palette of 100% raw wool felt, Breeze offers a perfect blend of elegance, functionality, and creative expression.

Specifications

Surface	Ceiling
Material	100% wool & WhispaTex™ polyester felt
Thickness	1/2", 12mm (±10%) <i>3mm Naturals + 9mm Essentials</i>
Weight	0.49 lb./ft ² (±10%)
Standard Sizes	Height: 8" up to 18" H (2" increments) Length: 24" up to 110" L (6" increments) <i>See page 5 for more details.</i>



Breeze Ceiling Baffles in Fox

Technical

NRC Rating	Pending product testing
Fire Test	ASTM E84, Class 1 Flame spread index: 7 Smoke developed index: 160
Colorfastness	ISO 105-B02, 4
Certifications	100% Mulesing-free pure wool

Details

Lead Time	3 – 6 weeks
Origin	Manufactured and assembled in the US
Warranty	Product: 10 years*

* Conditions apply

Environmental

Indoor Air Quality	VOC less than/equal to 0.5mg/m ³
Recyclable	100%*
Certifications	Oeko-Tex® Standard 100 Certified Product Class II (100% Wool Design Felt)

* Wool is recyclable through participating partners.



Colorways

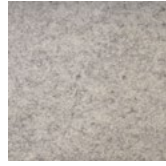
NATURALS



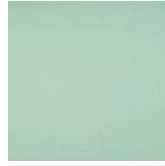
Coconut
CO02



Fog
FO01



Ash
AS08



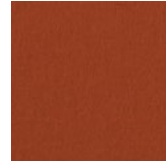
Wintergreen
WI06



Grassland
GR07



Zest
ZE04



Fox
FO05



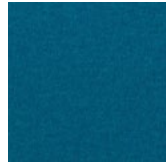
Shell
SH10



Fawn
FA03



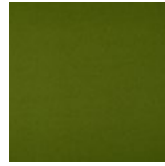
Cliffside
CL15



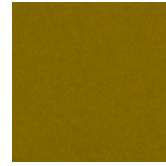
Indigo
IN20



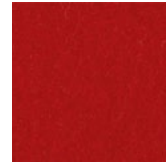
Ocean
OC13



Hedge
HW14



Tapenade
TA11



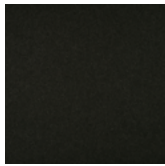
Amaryllis
AM12



Mulberry
MU17



Thicket
TH09



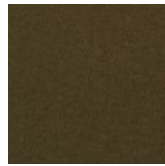
Raven
RA1



Night Sky
NI19



Balsam
BA21

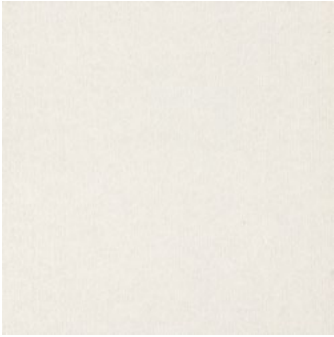


Kelp
KE18

Order samples at acoufelt.com/colorways

Colorways

ESSENTIALS



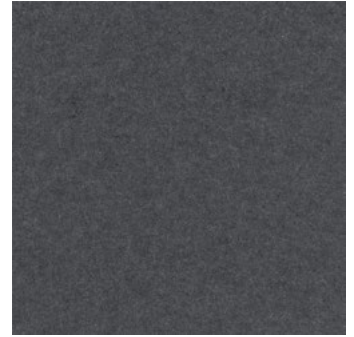
Talc
TA08



Limestone
LI07



Silt
SI06



Shale
SH03



Pumice
PU05



Gypsum
GY04



Jade
JA02



Basalt
BA01

Order samples at acoufelt.com/colorways

Sizes

Standard Sizes Height: 8" up to 18" H (2" increments)
 Length: 24" up to 110" L (6" increments)
Custom sizes available

Thickness 1/2", 12mm (±10%)

Hardware Spacing

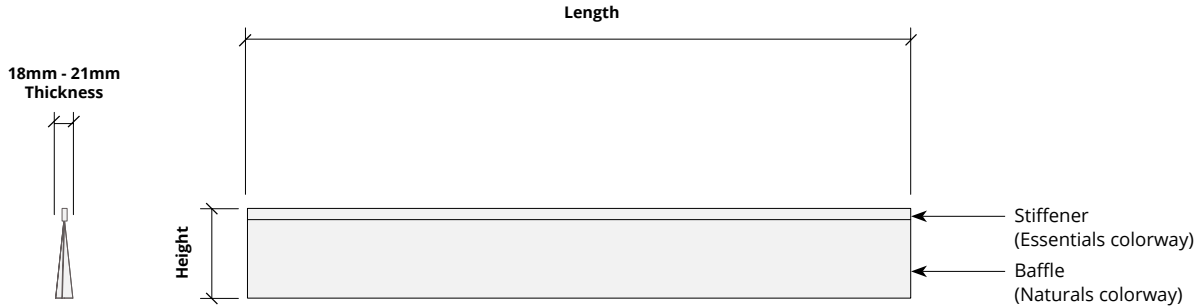
24, 30, 36, 42" L 36" on center spacing

48, 54, 60" L 24" on center spacing

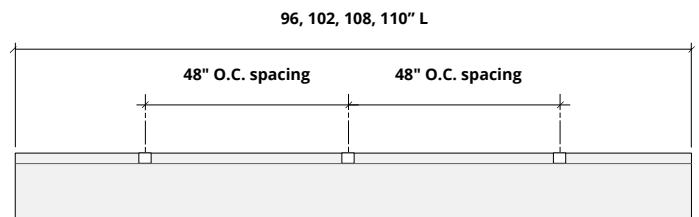
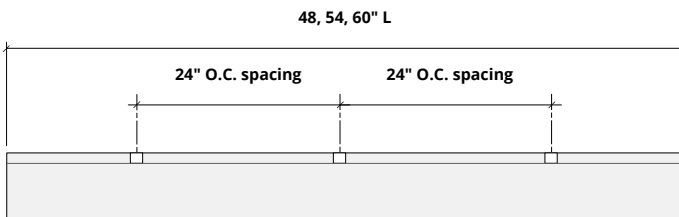
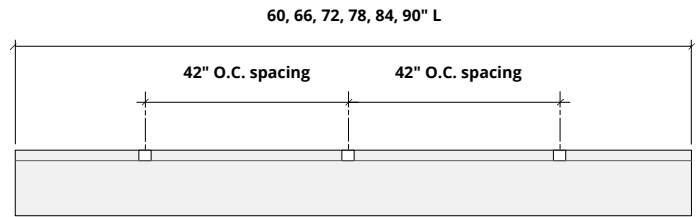
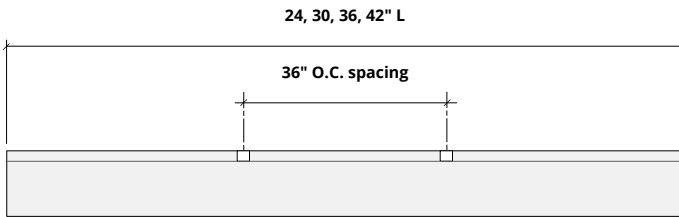
60, 66, 72, 78, 84, 90" L 42" on center spacing

96, 102, 108, 110" L 48" on center spacing

Elevation

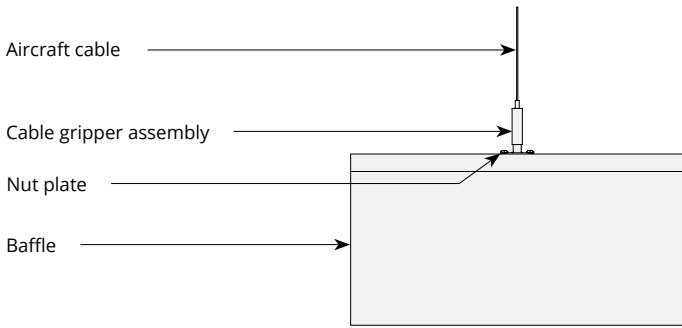


Hardware Spacing

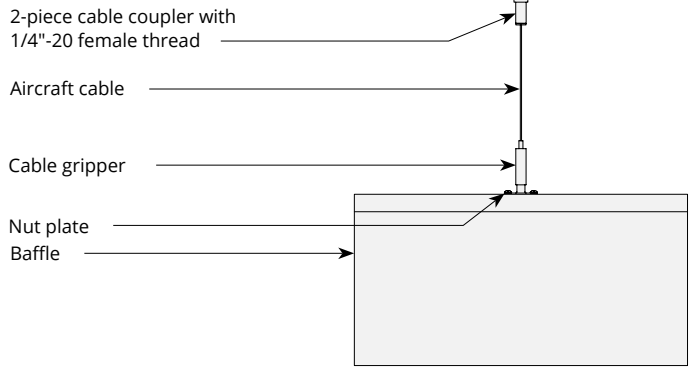


Mounting Methods

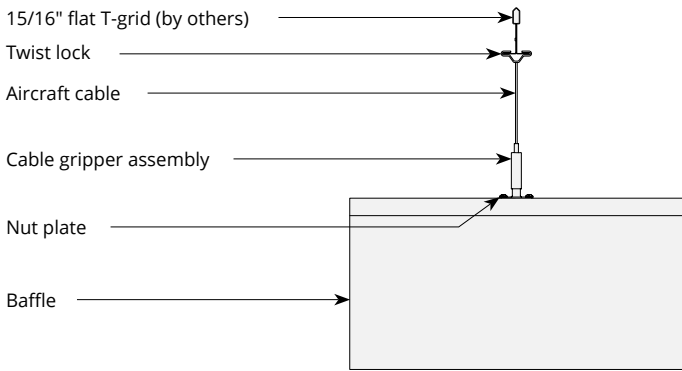
Cable



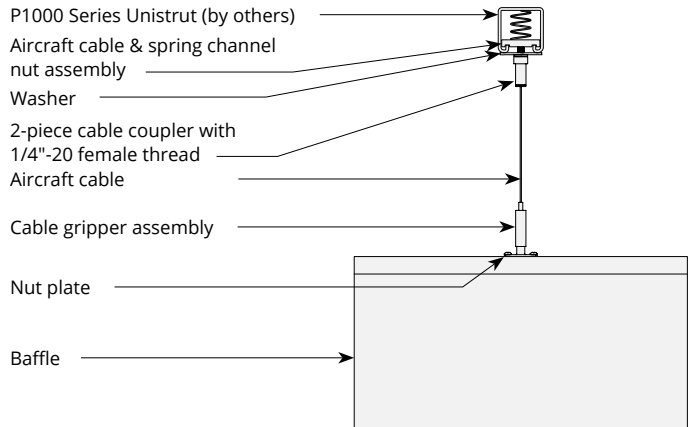
Cable to deck



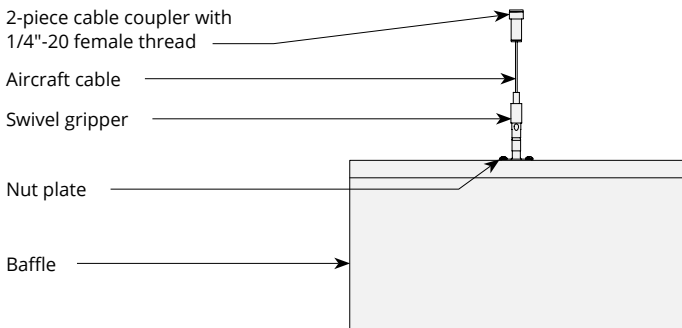
Cable to T-grid



Cable to Unistrut

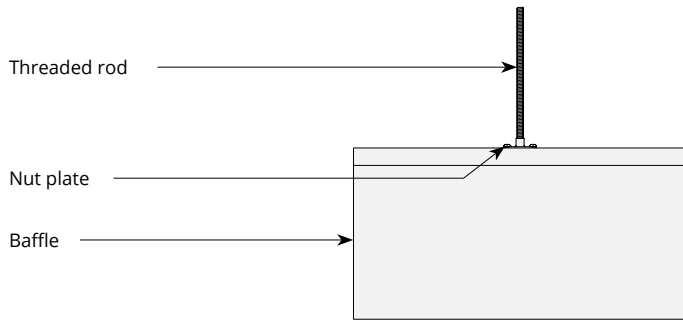


Swivel cable to deck

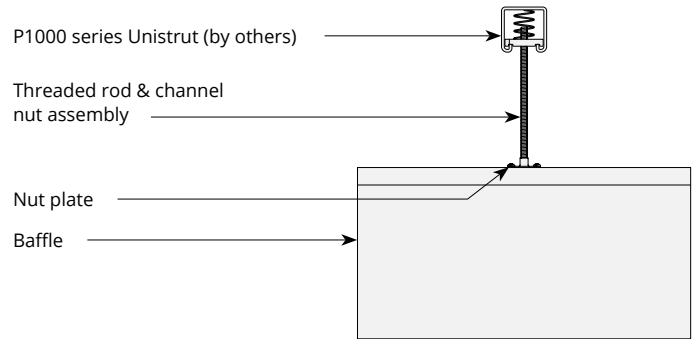


Mounting Methods cont'd.

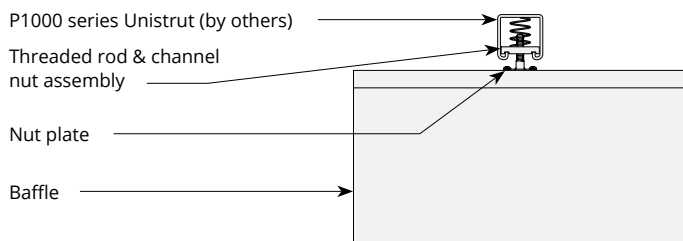
Threaded rod



Threaded rod to Unistrut



Direct to Unistrut



Twist lock to T-grid

