



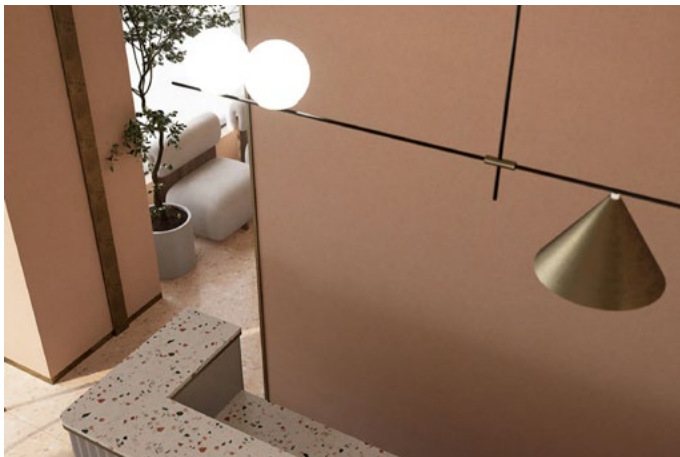
## Solid Wall Panels

Premier Collection

Transform bustling meeting areas into oases of tranquility. Elevate performance spaces to new heights of clarity and precision. With our acoustic wall panels, silence becomes an art form, and every space becomes a sanctuary of sound.

## Specifications

<b>Surface</b>	Wall
<b>Material</b>	Filasorb™ polyester felt
<b>Thickness</b>	2mm (±10%) 7mm (±10%) 9mm (±10%) 12mm (±10%) 24mm (±10%) 25mm (±10%) 50mm (±10%)
<b>Weight</b>	2mm, 0.082 lb./ft <sup>2</sup> (±10%) 7mm, 0.29 lb./ft <sup>2</sup> (±10%) 9mm, 0.37 lb./ft <sup>2</sup> (±10%) 12mm, 0.49 lb./ft <sup>2</sup> (±10%) 24mm, 0.98 lb./ft <sup>2</sup> (±10%) 25mm, 0.80 lb./ft <sup>2</sup> (±10%) 50mm, 0.92 lb./ft <sup>2</sup> (±10%)
<b>Standard Sizes</b>	12" up to 48" W (6" increments) 12" up to 108" H (6" increments), 110" H



Solid Wall Panel in Quartz

## Technical

<b>NRC Rating</b>	2mm: Testing in progress 7mm: 0.25 9mm: 0.30 12mm: 0.45 24mm: 0.60 25mm: 0.75 50mm: 0.90
<b>Fire Test</b>	ASTM E84, Class A Flame spread index: 15 Smoke developed index: 200
<b>Colorfastness</b>	ISO 105-B02, 6-7

## Details

<b>Lead Time</b>	3 – 6 weeks
<b>Origin</b>	Manufactured and assembled in the US
<b>Warranty</b>	Product: 20 years* Colorfastness: 20 years*

\* Conditions apply

## Environmental

<b>Recycled Content</b>	Minimum 60%
<b>Energy</b>	Generated using 40% solar energy
<b>Indoor Air Quality</b>	VOC less than/equal to 0.5mg/m3
<b>Recyclable</b>	100%*
<b>Certifications</b>	Environmental Product Declaration Declare Certification - LBC Red List Free (third-party verified) SCS Global Indoor Advantage Gold

\* PET is recyclable through participating partners.



# Colorways

PREMIER: 2, 12, 24mm



White  
WH12



Almond  
AL55



Pistachio  
PI25



Celery  
CE55



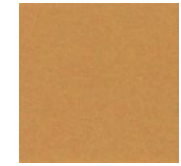
Metal  
ME03



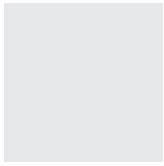
Flamingo  
FL61



Quartz  
QU67



Turmeric  
TU60



Platinum  
PL04



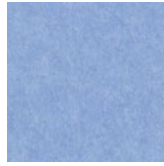
Pearl  
PE21



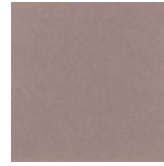
Eucalyptus  
EU71



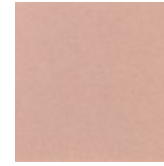
Sencha  
SE58



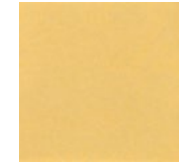
Periwinkle  
PE23



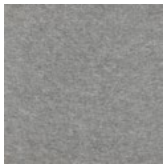
Amethyst  
AM69



Valentine  
VA70



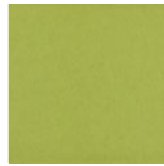
Wheat  
WH68



Grey  
GR02



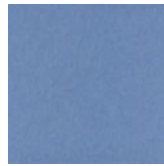
Ivory  
IV11



Wasabi  
WA29



Sea Salt  
SE57



Marine  
MA15



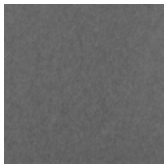
Lilac  
LI13



Peach  
PE19



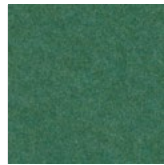
Popcorn  
PO26



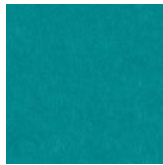
Slate  
SL27



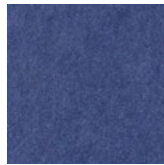
Umber  
UM54



Thistle  
TH28



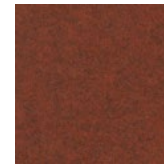
Peacock  
PE20



Iris  
IR10



Berry  
BE06



Peppercorn  
PE22



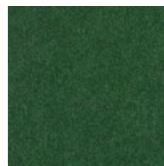
Carrot  
CA08



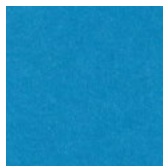
Charcoal  
CH01



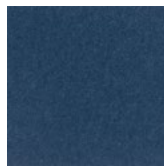
Walnut  
WA56



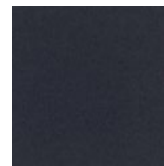
Oregano  
OR18



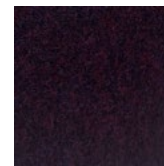
Azure  
AZ05



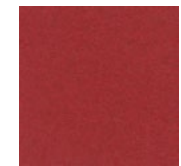
Granite  
GR62



Flint  
FL64



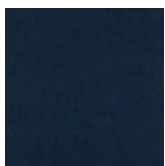
Shiraz  
SH63



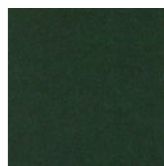
Currant  
CU59



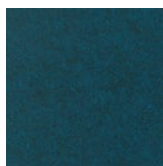
Piano Black  
PI24



Midnight  
MI16



Kale  
KA12



Denim  
DE09

Order samples at [acoufelt.com/colorways](https://acoufelt.com/colorways)



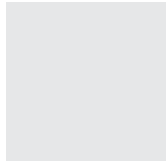
Call 800.966.8557 with questions or visit [acoufelt.com](https://acoufelt.com) for more product information, downloads, and colorways.

# Colorways

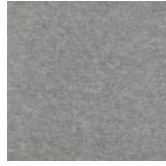
## PREMIER: 7, 9mm



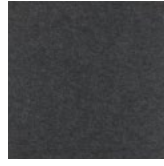
**Metal**  
ME03



**Platinum**  
PL04



**Grey**  
GR02

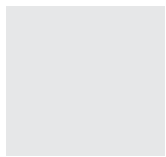


**Charcoal**  
CH01

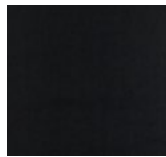
## PREMIER: 25, 50mm



**White**  
WH12



**Platinum**  
PL04



**Piano Black**  
PI24

---

Order samples at [acoufelt.com/colorways](https://acoufelt.com/colorways)



Call **800.966.8557** with questions or visit [acoufelt.com](https://acoufelt.com) for more product information, downloads, and colorways.

# Sizes

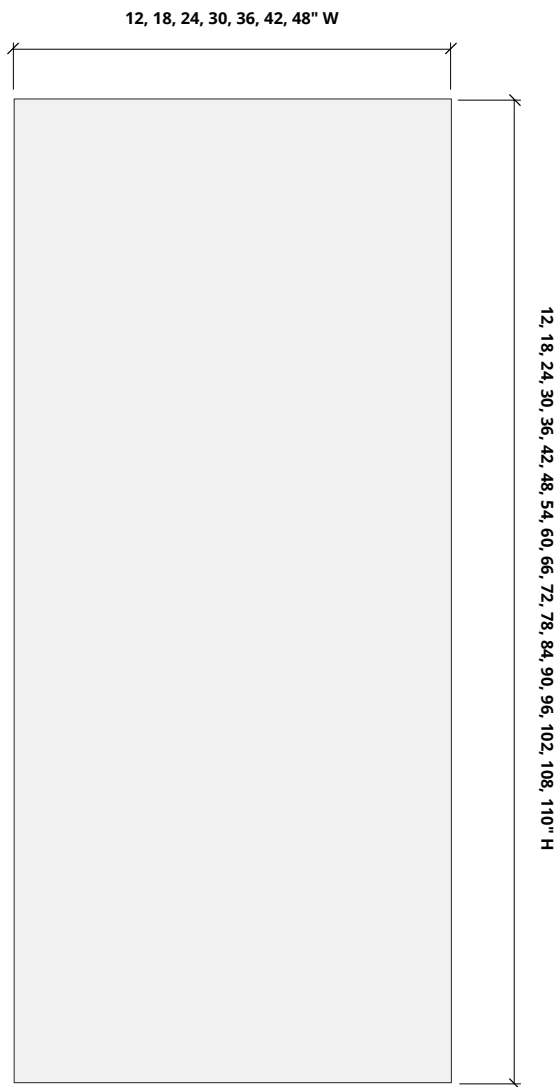
**Standard Sizes** 12" up to 48" W (6" increments)  
12" - 108" H (6" increments), 110" H

---

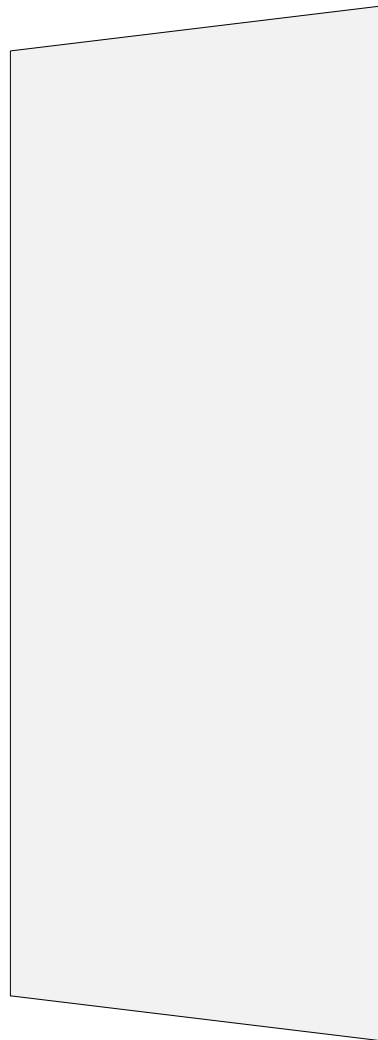
**Thickness** 2mm (±10%)  
7mm (±10%)  
9mm (±10%)  
12mm (±10%)  
24mm (±10%)  
25mm (±10%)  
50mm (±10%)

---

**Plan**

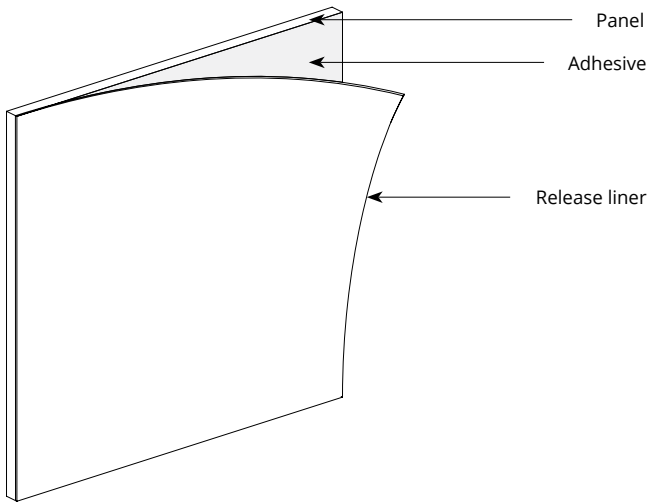


**Perspective**

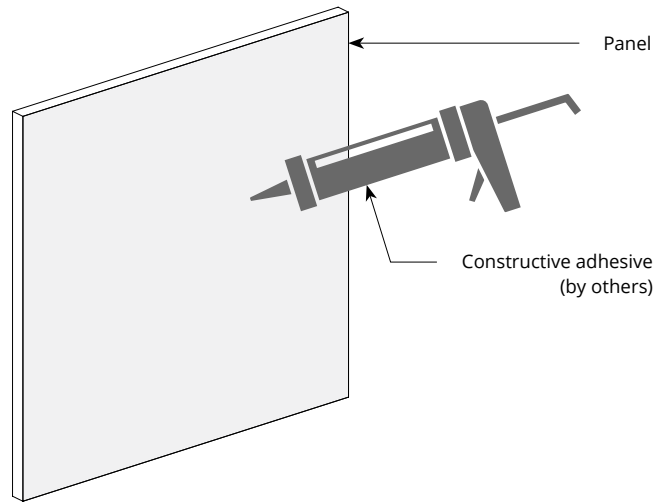


# Mounting Methods

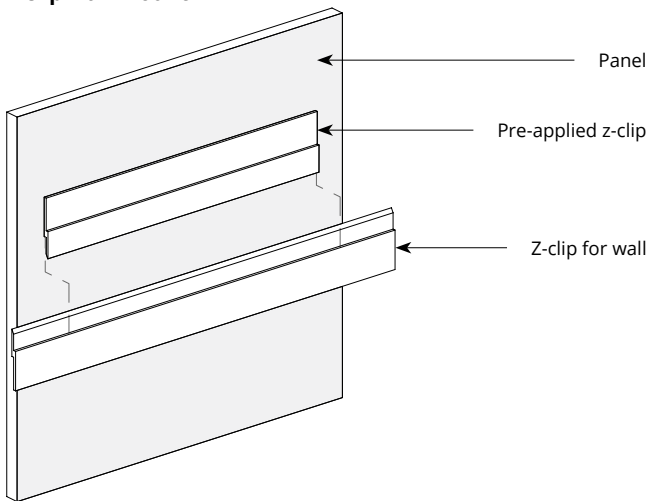
## Adhesive backing



## Construction adhesive



## Z-clip wall mount



*\*For wall mount applications only.*



# Acoustic Performance

**Test Method** 7, 9, 24, 25mm

ASTM E795-16

**12mm**

ASTM C423-09a

**Install Method** A

**Rating Method** ISO 11654-2002

**Test Results** 2mm: Product acoustic testing in progress

7mm: 0.25, no air gap

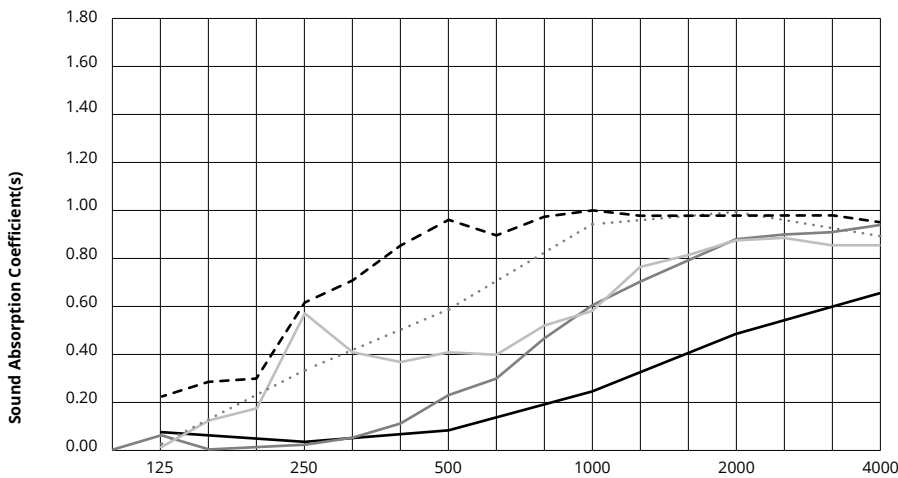
9mm: 0.30, no air gap

12mm: 0.45, no air gap

24mm: 0.60, no air gap

25mm: 0.75, no air gap

50mm: 0.90, no air gap



	Frequency f (Hz)	125	250	500	1000	2000	4000	NRC
	2mm	Product acoustic testing in progress						NA
	7mm	0.06	0.02	0.08	0.28	0.57	0.78	0.25
	9mm	-	-	-	-	-	-	0.30
	12mm	0.06	0.02	0.23	0.61	0.89	0.95	0.45
	24mm	0.02	0.57	0.41	0.58	0.87	0.85	0.60
	25mm	0.08	0.27	0.64	1.00	0.97	0.96	0.70
	50mm	0.22	0.63	0.95	0.98	0.98	0.93	0.90

## What is a Noise Reduction Coefficient (NRC)?

You'll find the NRC rating in the specifications of all of our products. This acronym stands for Noise Reduction Coefficient, and is expressed as a single number, a rating that describes the degree to which acoustic products can absorb sound.

You can use NRC values to understand the overall performance of our acoustic wall and ceiling products. The higher the NRC, the better the product is at soaking up the sound.

*Performance Indices: Noise Reduction Coefficient (NRC) results represent the absorption coefficients measured at the one third octave bands at 125, 250, 500, 1000, 2000 and 4000 Hz rounded to the nearest 0.05. Acoustic testing has been performed according to the methods mentioned above. Customization of installation of the product could alter the results. Sound Absorption Average (SAA) indicates the absorption coefficient average for the twelve one-third octave bands ranging between 200 and 2500 Hz.*