

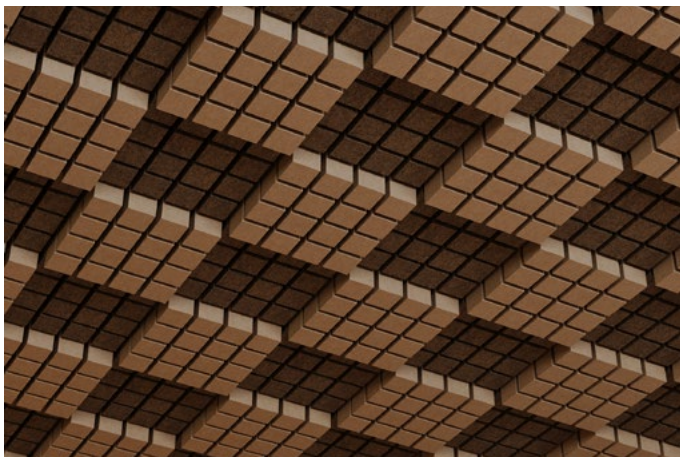
Horizon, Desert Ceiling Frames

Premier Collection

Look up to a peaceful vista. Evenly arranged horizon cubes mimic a calming, open expanse of land while ensuring superior sound management. Choose a single Premier color or WoodGrain option or select two complementary finishes for the cubes and the backing. Modern, modular, and easy to mount with T-grid clips, Horizon can change your outlook about working or meeting in a crowded space.

Specifications

Surface	Ceiling	
Material	FilaSorb™ polyester felt	
Thickness	1/2", 12mm (±10%)	
Weight	0.49 lb./ft ² (±10%)	
Standard Sizes	Height	Backer Panels
	3, 6" H	24" W x 24" L
Compatible T-grid	Type	Layout
	15/16" Flat	Standard 24" x 24"
	9/16" Flat	Standard 24" x 24"



Horizon, Desert Ceiling Frames in Walnut and Umber

Technical

NRC Rating	Pending product testing
Fire Test	ASTM E84, Class A
	Flame spread index: 15
	Smoke developed index: 200
Water Sorption	ASTM C1104-2019 (A Modified)
	Water sorbed by weight: 0.20% (based on a 12mm thick panel)
Colorfastness	ISO 105-B02, 6-7

Details

Lead Time	3 – 6 weeks
Origin	Manufactured and assembled in the US
Warranty	Product: 20 years*
	Colorfastness: 20 years*

* Conditions apply

Environmental

Recycled Content	Minimum 60%
Energy	Generated using 40% solar energy
Indoor Air Quality	VOC less than/equal to 0.5mg/m ³
Recyclable	100%*
Certifications	Declare Certification - LBC Red List Free (third-party verified)
	SCS Global Indoor Advantage Gold

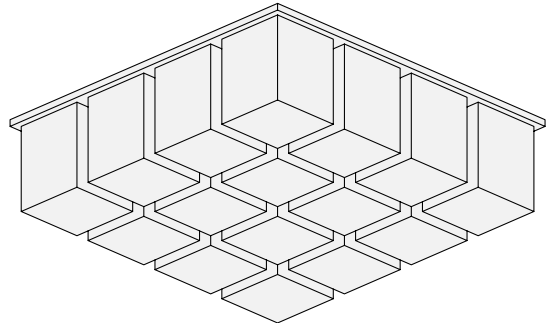
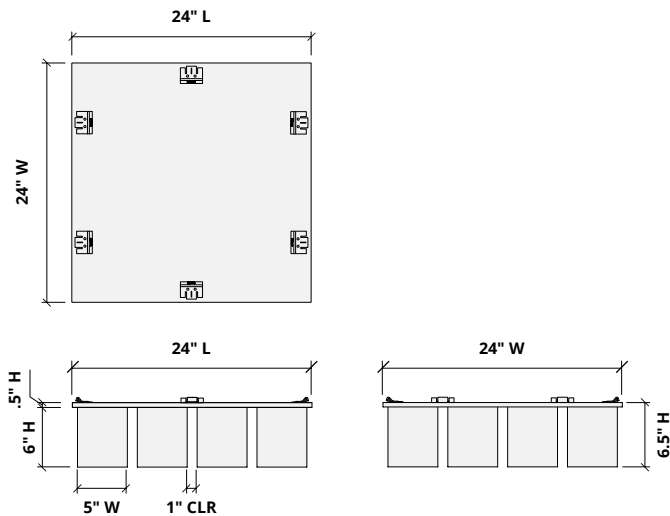
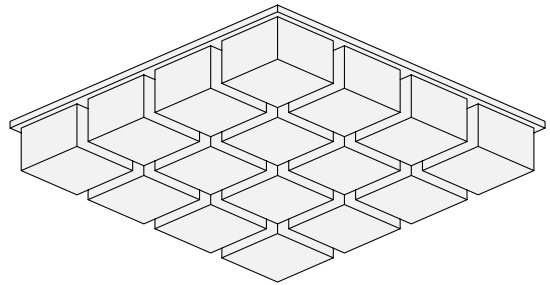
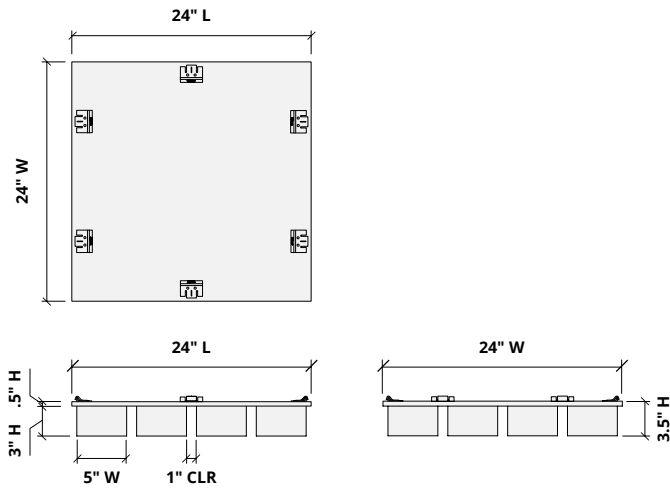
* PET is recyclable through participating partners.



Sizes

Standard Heights	3, 6" H
Standard Widths	24" W
Thickness	1/2", 12mm (±10%)

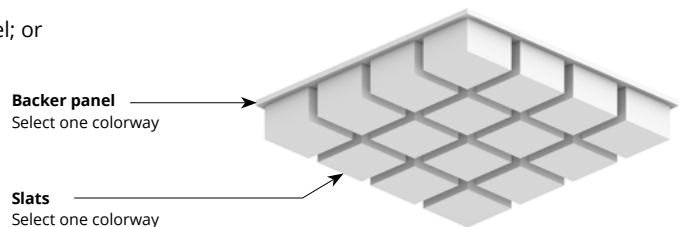
Standard Length 24" L



Choose Colorways

Select one colorway for your slats and one colorway for your backer panel; or one colorway for both. See colorway choices on page 4.

If you're specifying dark colored backer panels, we recommend dark drop ceiling grids (not provided).

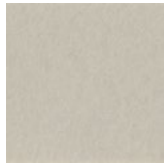


Colorways

PREMIER



White
WH12



Almond
AL55



Celery
CE65



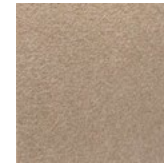
Sencha
SE58



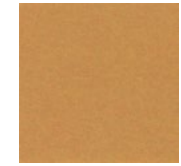
Metal
ME03



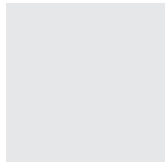
Flamingo
FL61



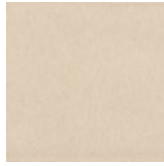
Quartz
QU67



Turmeric
TU60



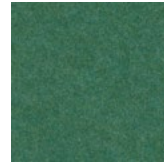
Platinum
PL04



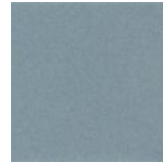
Pearl
PE21



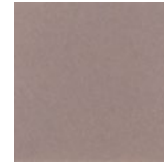
Pistachio
PI25



Thistle
TH28



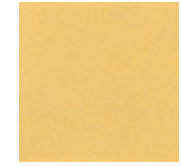
Stonewash
ST72



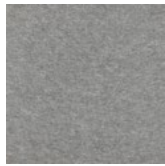
Amethyst
AM69



Valentine
VA70



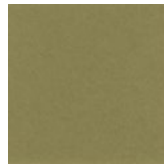
Wheat
WH68



Grey
GR02



Ivory
IV11



Eucalyptus
EU71



Peacock
PE20



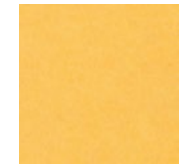
Periwinkle
PE23



Lilac
LI13



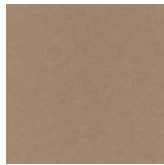
Peach
PE19



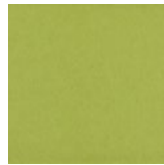
Popcorn
PO26



Slate
SL27



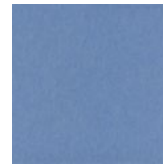
Umber
UM54



Wasabi
WA29



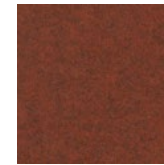
Sea Salt
SE57



Marine
MA15



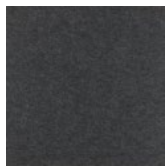
Berry
BE06



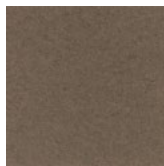
Peppercorn
PE22



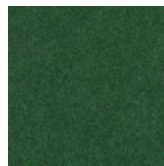
Carrot
CA08



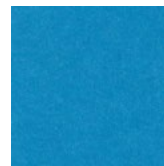
Charcoal
CH01



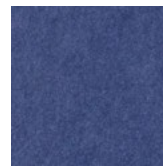
Walnut
WA56



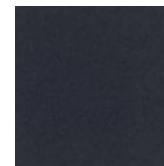
Oregano
OR18



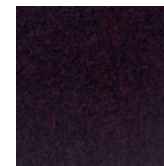
Azure
AZ05



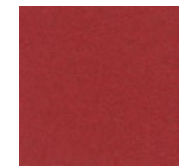
Iris
IR10



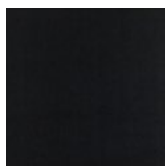
Flint
FL64



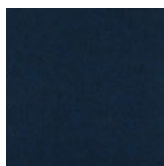
Shiraz
SH63



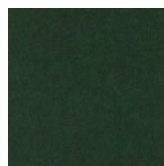
Currant
CU59



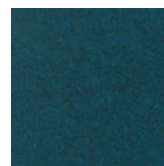
Piano Black
PI24



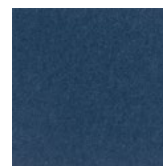
Midnight
MI16



Kale
KA12



Denim
DE09



Granite
GR62

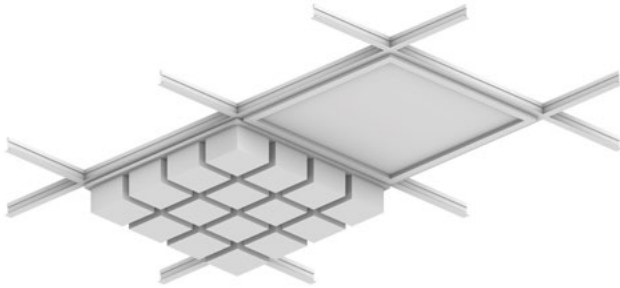
Order samples at acoufelt.com/colorways



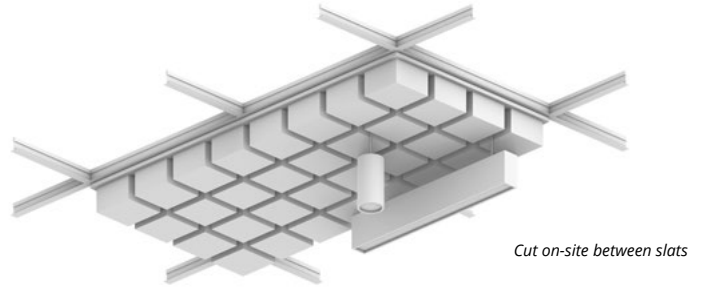
Call 800.966.8557 with questions or visit acoufelt.com for more product information, downloads, and colorways.

Lighting Coordination

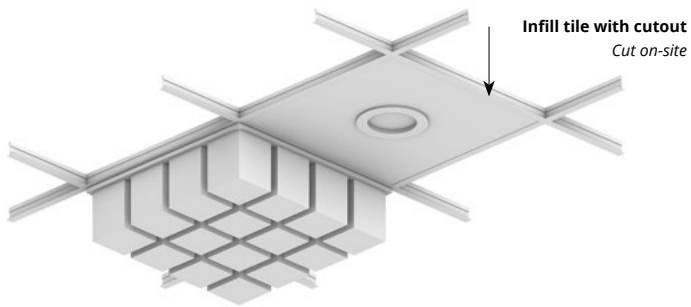
24" x 24", 24" x 48" Grid light



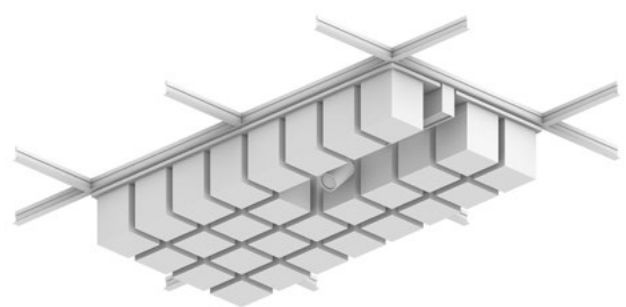
Drop pendant light



Recessed light



Grid mounted light (track, pendant)



Recommended Layout

