



## Blox, Deep Ceiling Clouds

Premier Collection

Pacify problematic sound by beautifully boxing up the racket. With a deeper-set insert to add greater contrast and drama, Blox ceiling clouds offer a fresh take on noise reduction while inviting you to customize your space with Premier colors from subtle to bold shades, realistic WoodGrain patterns, or a combination inside and out. Blox allows total creativity to blend sizes, play with color, and add lighting as you like.

## Specifications

<b>Surface</b>	Ceiling
<b>Material</b>	FilaSorb™ polyester felt
<b>Thickness</b>	1/2", 12mm (±10%)
<b>Weight</b>	0.49 lb./ft <sup>2</sup> (±10%)
<b>Standard Sizes</b>	20" W x 44" L x 20" H 44" W x 44" L x 20" H



Blox, Deep Ceiling Cloud in Pearl and White

## Technical

<b>NRC Rating</b>	Pending product testing
<b>Fire Test</b>	ASTM E84, Class A Flame spread index: 15 Smoke developed index: 200
<b>Water Sorption</b>	ASTM C1104-2019 (A Modified) Water sorbed by weight: 0.20% (based on a 12mm thick panel)
<b>Colorfastness</b>	ISO 105-B02, 6-7

## Details

<b>Lead Time</b>	3 – 6 weeks
<b>Origin</b>	Manufactured and assembled in the US
<b>Warranty</b>	Product: 20 years* Colorfastness: 20 years*

\* Conditions apply

## Environmental

<b>Recycled Content</b>	Minimum 60%
<b>Energy</b>	Generated using 40% solar energy
<b>Indoor Air Quality</b>	VOC less than/equal to 0.5mg/m3
<b>Recyclable</b>	100%*
<b>Certifications</b>	Declare Certification - LBC Red List Free (third-party verified) SCS Global Indoor Advantage Gold

\* PET is recyclable through participating partners.

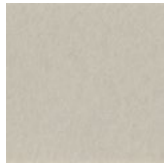


# Colorways

## PREMIER



White  
WH12



Almond  
AL55



Celery  
CE65



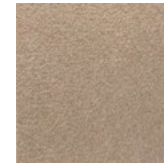
Sencha  
SE58



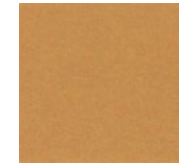
Metal  
ME03



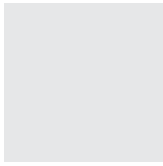
Flamingo  
FL61



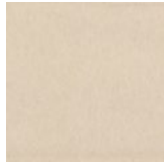
Quartz  
QU67



Turmeric  
TU60



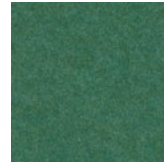
Platinum  
PL04



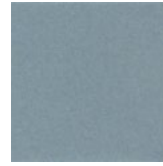
Pearl  
PE21



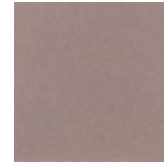
Pistachio  
PI25



Thistle  
TH28



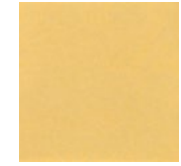
Stonewash  
ST72



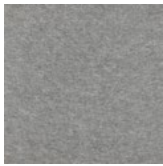
Amethyst  
AM69



Valentine  
VA70



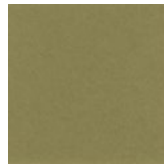
Wheat  
WH68



Grey  
GR02



Ivory  
IV11



Eucalyptus  
EU71



Peacock  
PE20



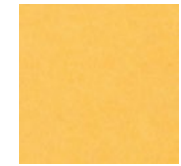
Periwinkle  
PE23



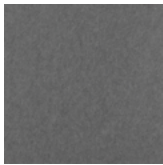
Lilac  
LI13



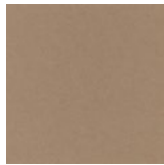
Peach  
PE19



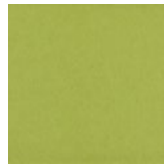
Popcorn  
PO26



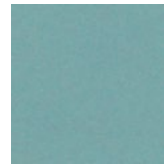
Slate  
SL27



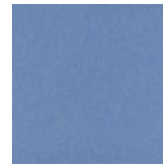
Umber  
UM54



Wasabi  
WA29



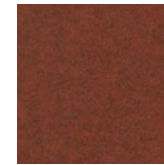
Sea Salt  
SE57



Marine  
MA15



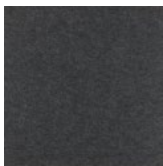
Berry  
BE06



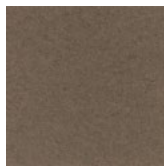
Peppercorn  
PE22



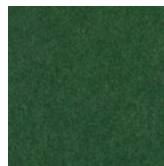
Carrot  
CA08



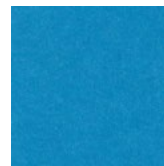
Charcoal  
CH01



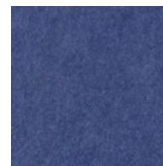
Walnut  
WA56



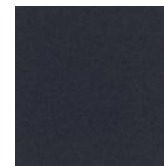
Oregano  
OR18



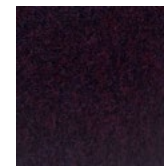
Azure  
AZ05



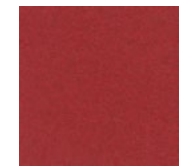
Iris  
IR10



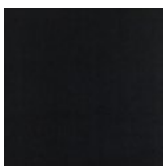
Flint  
FL64



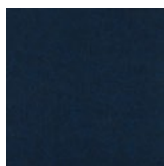
Shiraz  
SH63



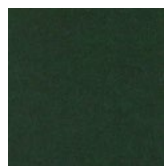
Currant  
CU59



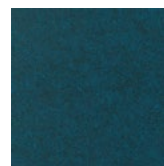
Piano Black  
PI24



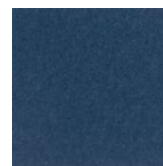
Midnight  
MI16



Kale  
KA12



Denim  
DE09



Granite  
GR62

Order samples at [acoufelt.com/colorways](https://acoufelt.com/colorways)

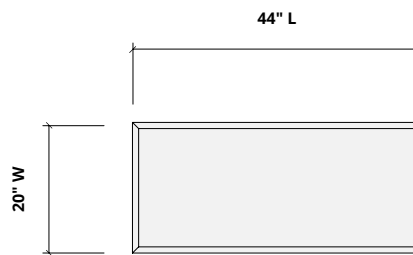
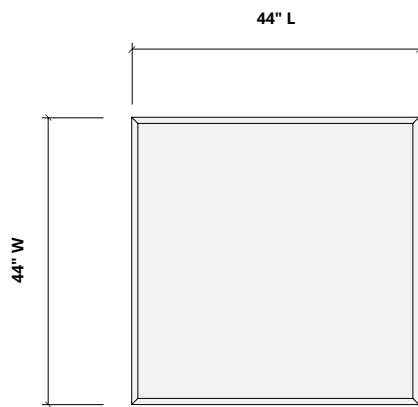


Call 800.966.8557 with questions or visit [acoufelt.com](https://acoufelt.com) for more product information, downloads, and colorways.

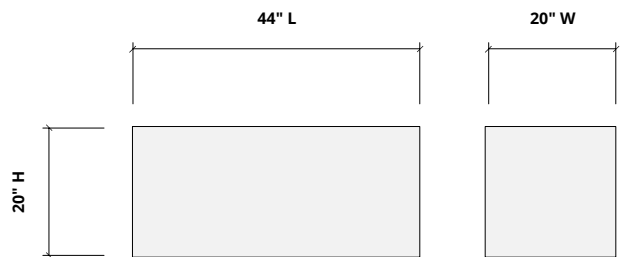
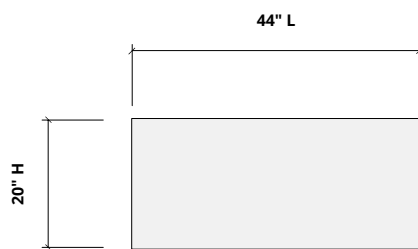
# Sizes

<b>Standard Sizes</b>	20" W x 44" L x 20" H 44" W x 44" L x 20" H
<b>Thickness</b>	1/2", 12mm (±10%)

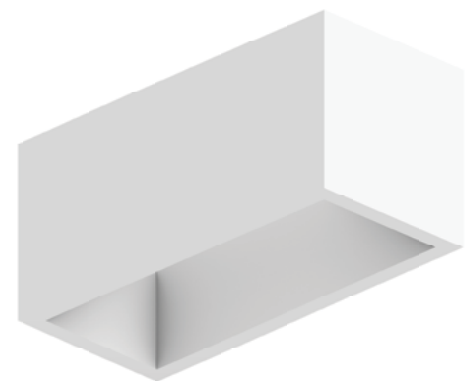
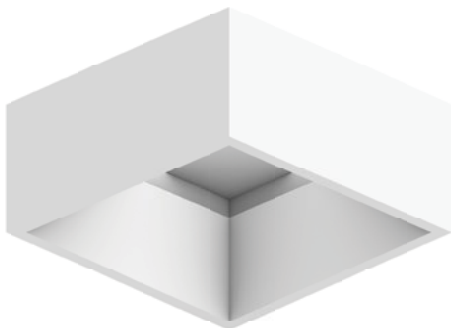
## Plan



## Elevations

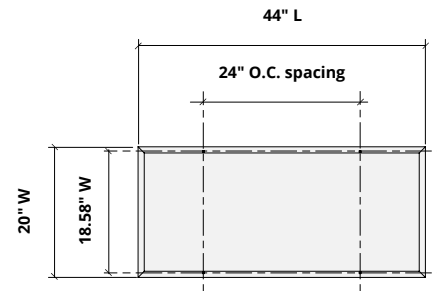
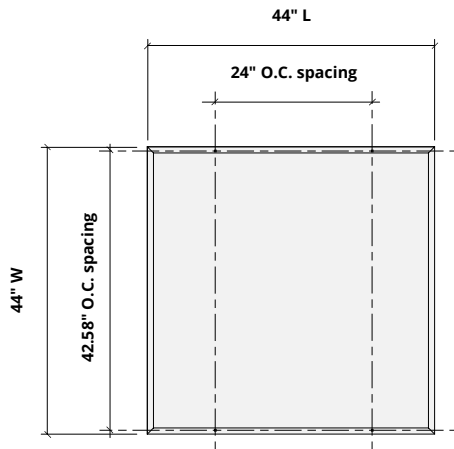


## Perspective



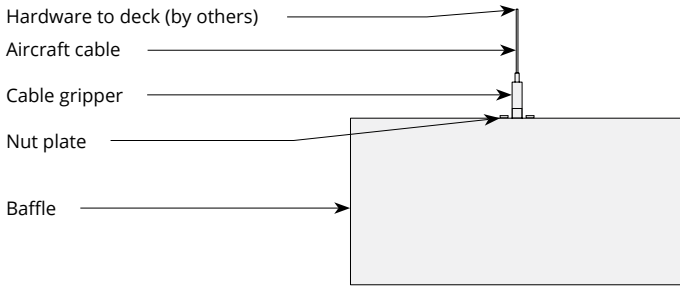
# Hardware Spacing

44" W	42.58" on center spacing
44" L	24" on center spacing
20" L	18.58" on center spacing

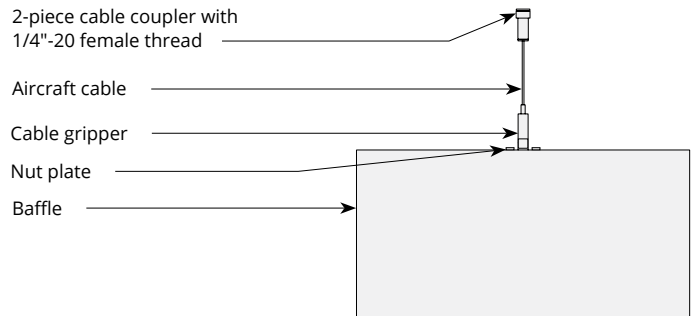


# Mounting Methods

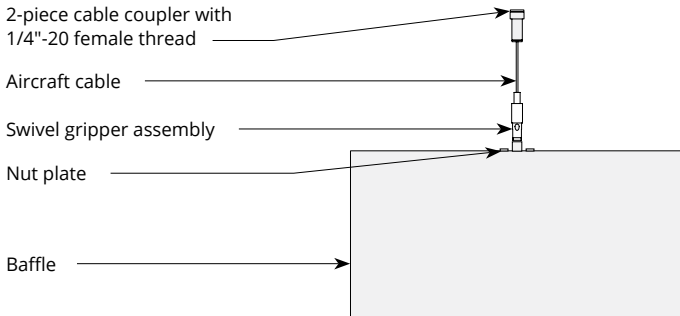
## Cable



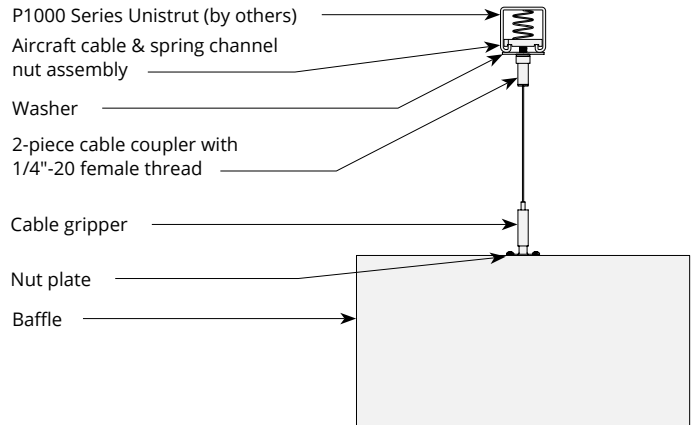
## Cable to deck



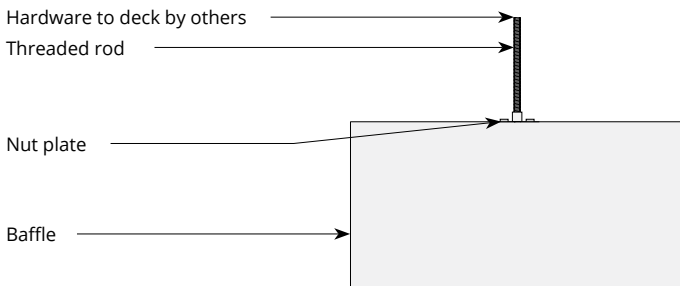
## Swivel cable to deck



## Cable to Unistrut

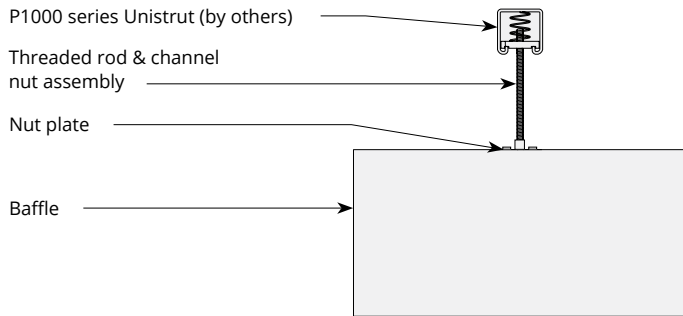


## Threaded rod

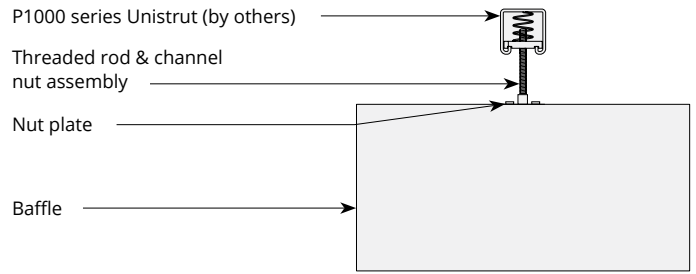


# Mounting Methods cont'd.

## Threaded rod to Unistrut



## Direct to Unistrut



FIXTURE TYPE \_\_\_\_\_

PROJECT NAME \_\_\_\_\_

LOCATION \_\_\_\_\_



# Uniform Static White (Indoor)

INDOOR WHITE LIGHT TAPE



## I Description

Our Uniform Static White series provides single bin, 3 step color consistency across every single output option and will never create a diode image when paired with any Kelvix channel.

## I Features

- Uses U2835 Diode
- Create a Custom Fixture with Kelvix Channels
- 5-Year Warranty
- UL-Listed
- 3M™ Industrial Adhesive Backing
- For Use with 24V Power Supplies
- Dimmable using Kelvix Power Supplies

## I Series Spec

Series	UNI-WL
Temp/Colors*	1800K–6500K
Input Voltage	24V DC/Constant Voltage
Beam Spread	120°
CRI	Ra 90+, R9 70+
Diode	2835
Diode Pitch	240 LED/m
Binning Tolerance*	ANSI 3Step
Cut Intervals	1.31" (33.3mm)
Dimensions	0.47" (12.0mm) × 0.07" (1.8mm)
Operating Temp.	-4°F (-20°C) to 140°F (60°C)
Storage Temp.	-4°F (-20°C) to 158°F (70°C)

## I Product Code Builder

Series	Location	Output*	Temp/Color*	Voltage	Modification
<b>UNI-WL</b>	<b>I</b>			<b>24V</b>	<b>NA</b>
<b>UNI-WL</b> – Uniform Static White	<b>I</b> – Indoor	<b>100</b> – 100 lm/ft <b>200</b> – 200 lm/ft <b>300</b> – 300 lm/ft <b>400</b> – 400 lm/ft <b>500</b> – 500 lm/ft <b>750</b> – 750 lm/ft <b>1000</b> – 1000 lm/ft <b>1250</b> – 1250 lm/ft <b>1500</b> – 1500 lm/ft	<b>18K</b> – 1800K <b>22K</b> – 2200K <b>24K</b> – 2400K <b>27K</b> – 2700K <b>30K</b> – 3000K <b>35K</b> – 3500K <b>40K</b> – 4000K <b>50K</b> – 5000K <b>65K</b> – 6500K	<b>24V</b> – 24V DC	<b>NA</b> – None
Example: UNI-WL-I-100-18K-24V-NA					

\* Customizable—Consult Factory

Conforms to ANSI/UL Standard 2108  
Certified to CAN/CSA Standard C22.2 NO. 250.0





## I Series Data

Output (lm/ft)	UNI-WL 100	UNI-WL 200	UNI-WL 300	UNI-WL 400	UNI-WL 500	UNI-WL 750	UNI-WL 1000	UNI-WL 1250	UNI-WL 1500	
Lumens (per ft)	1800K	83	162	245	324	391	635	846	1040	1261
	2200K	91	177	267	353	425	670	894	1098	1331
	2400K	93	182	276	365	439	685	914	1123	1361
	2700K	97	189	287	379	457	704	939	1154	1399
	3000K	100	195	295	390	470	720	960	1180	1430
	3500K	103	201	304	402	485	739	986	1211	1468
	4000K	105	205	309	409	493	751	1001	1231	1492
	5000K	106	207	313	414	499	760	1013	1245	1509
	6500K	110	215	325	430	519	758	1011	1243	1506
Wattage <sup>1</sup> (per ft)	0.7	1.3	2.0	2.6	3.4	4.4	5.6	7.2	8.6	
Efficiency (lm/W)	144	147	150	150	140	162	173	164	166	
Max Run Length (ft)	46	30	25	22	19	17	14	11	11	

<sup>1</sup>Power consumption based on average wattage per foot. Refer to Power Chart on page 4 for details.

## I Dimensions



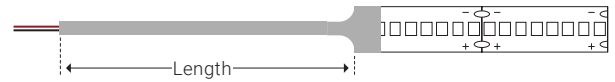


## I Power Feed Accessories\*

### Lead



Unit Number	Length
FML-2C-1	12.00" (305.0mm)
FML-2C-2	24.00" (0.60m)
FML-2C-3	36.00" (0.91m)
FML-2C-6	72.00" (1.82m)
FML-2C-12	144.00" (3.65m)
FML-2C-15	180.00" (4.57m)
FML-2C-20	240.00" (6.09m)

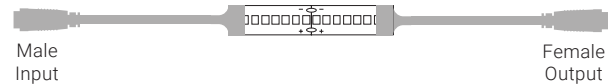
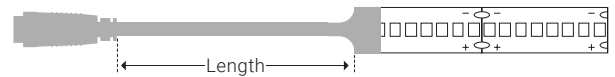


For leads on both input and output, specify 2x FML-xC-xx per run.

### Lead with DC Plug



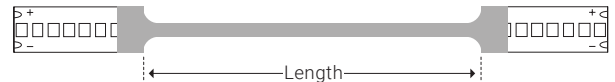
Unit Number	Length
FML-2C-DC-1-M	12.00" (305.0mm)
FML-2C-DC-1-F	12.00" (305.0mm)
FML-2C-DC-6-M	72.00" (1.82m)
FML-2C-DC-6-F	72.00" (1.82m)
FML-2C-DC-10-M	120.00" (3.04m)
FML-2C-DC-10-F	120.00" (3.04m)



### Connector



Unit Number	Length
FMC-2C-1.5I	1.50" (38.0mm)
FMC-2C-3I	3.00" (76.0mm)
FMC-2C-6I	6.00" (152.0mm)
FMC-2C-9I	9.00" (228.0mm)
FMC-2C-1	12.00" (305.0mm)
FMC-2C-2	24.00" (0.60m)



\* Customizable—Consult Factory



## I Power Chart

		UNI-WL-100	UNI-WL-200	UNI-WL-300	UNI-WL-400	UNI-WL-500	UNI-WL-750	UNI-WL-1000	UNI-WL-1250	UNI-WL-1500
Watts	1 ft	0.7	1.5	2.2	3	3.9	5.3	6.7	8.6	10.7
	2 ft	1.5	2.9	4.6	6.1	7.9	10.4	13	16.6	20.5
	3 ft	2.3	4.5	6.7	9	11.7	15.5	19.2	24.1	29.6
	4 ft	3.1	5.9	8.9	11.8	15.4	20.2	25	31.3	38.1
	5 ft	3.8	7.4	11	14.6	18.6	24.6	29.5	37.4	44.8
	6 ft	4.6	8.8	12.9	17.1	21.9	28.5	34.8	43.2	51.6
	7 ft	5.4	10.1	14.9	19.6	24.8	32.6	39.4	48	56.9
	8 ft	6	11.5	16.8	22.1	28	36.2	43.4	52.8	61.5
	9 ft	6.9	12.7	18.7	24.5	31.1	39.7	47.3	57.4	66.3
	10 ft	7.6	14	20.5	26.7	33.8	43.6	51.3	61.1	70.3
	11 ft	8.3	15.2	22.3	29	36.2	46.5	54.5	65.9	74.4
	12 ft	9	16.4	24.1	31.1	38.5	49.3	57.8	-	-
	13 ft	9.7	17.8	25.8	33	40.7	51.4	60.5	-	-
	14 ft	10.3	18.9	27.4	33.4	42.7	53.8	62.9	-	-
	15 ft	11	19.9	28.7	36.8	44.7	56.9	-	-	-
	16 ft	11.8	21.1	30.4	38.7	46.8	59.3	-	-	-
	17 ft	12.4	22.3	31.8	40.2	48.9	61.7	-	-	-
	18 ft	13	23.3	33.4	41.9	50.3	-	-	-	-
	19 ft	13.7	24.3	34.7	43.5	52.1	-	-	-	-
	20 ft	14.2	25.5	35.8	45	-	-	-	-	-
	21 ft	14.9	26.4	36.9	46	-	-	-	-	-
	22 ft	15.4	27.5	37.3	47.6	-	-	-	-	-
	23 ft	16.1	28.3	38	-	-	-	-	-	-
	24 ft	16.6	29.3	39	-	-	-	-	-	-
	25 ft	17.2	30.1	40.3	-	-	-	-	-	-
	26 ft	17.8	30.8	-	-	-	-	-	-	-
	27 ft	18.4	31.6	-	-	-	-	-	-	-
	28 ft	19	32.4	-	-	-	-	-	-	-
	29 ft	19.5	33.4	-	-	-	-	-	-	-
	30 ft	20.1	34.2	-	-	-	-	-	-	-
	31 ft	20.7	-	-	-	-	-	-	-	-
	32 ft	21.1	-	-	-	-	-	-	-	-
	33 ft	21.7	-	-	-	-	-	-	-	-
	34 ft	22.2	-	-	-	-	-	-	-	-
	35 ft	22.7	-	-	-	-	-	-	-	-
	36 ft	23.2	-	-	-	-	-	-	-	-
	37 ft	23.7	-	-	-	-	-	-	-	-
	38 ft	24.2	-	-	-	-	-	-	-	-
	39 ft	24.6	-	-	-	-	-	-	-	-
	40 ft	25.1	-	-	-	-	-	-	-	-
	41 ft	25.5	-	-	-	-	-	-	-	-
	42 ft	26	-	-	-	-	-	-	-	-
	43 ft	26.3	-	-	-	-	-	-	-	-
	44 ft	26.8	-	-	-	-	-	-	-	-
	45 ft	27.2	-	-	-	-	-	-	-	-
	46 ft	27.4	-	-	-	-	-	-	-	-