

Layered, Envelop Ceiling Baffles

Naturals Collection

Shelter any space from unwanted sound. Envelop baffles hung in multiples overhead create a naturally elegant blanket of sound absorption. Choose from an inspiring range of sizes and saturated colors. Envelop baffles wrap richly dyed, 100% raw wool felt around an interior core of proven performance felt for exceptional sound attenuation and aesthetics.

Specifications

Surface	Ceiling
Material	100% WhispaTex™ polyester felt & wool
Thickness	1/2", 15mm (±10%) 3mm Naturals + 9mm Essentials + 3mm Naturals
Weight	0.49 lb./ft ² (±10%)
Standard Sizes	Height: 4" up to 12" H (2" increments) Length: 24" up to 110" L (6" increments) <i>See page 5 for more details. Custom sizes available</i>



Layered, Envelop Ceiling Baffles in Ocean and Talc

Technical

NRC Rating	Pending product testing
Fire Test	ASTM E84, Class 1 Flame spread index: 7 Smoke developed index: 160
Colorfastness	ISO 105-B02, 4
Certifications	100% Mulesing-free pure wool

Details

Lead Time	3 – 6 weeks
Origin	Manufactured and assembled in the US
Warranty	Product: 10 years*

* Conditions apply

Environmental

Indoor Air Quality	VOC less than/equal to 0.5mg/m3
Recyclable	100%*
Certifications	Oeko-Tex® Standard 100 Certified Product Class II (100% Wool Design Felt)

* Wool is recyclable through participating partners.



Colorways

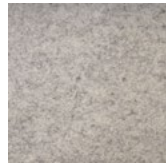
NATURALS



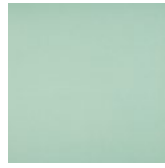
Coconut
CO02



Fog
FO01



Ash
AS08



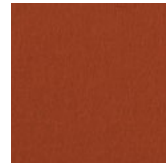
Wintergreen
WI06



Grassland
GR07



Zest
ZE04



Fox
FO05



Shell
SH10



Fawn
FA03



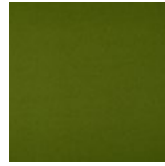
Cliffside
CL15



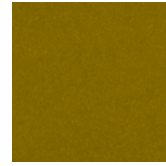
Indigo
IN20



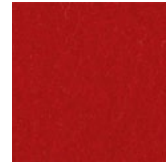
Ocean
OC13



Hedge
HW14



Tapenade
TA11



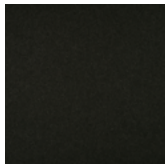
Amaryllis
AM12



Mulberry
MU17



Thicket
TH09



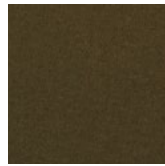
Raven
RA1



Night Sky
NI19



Balsam
BA21

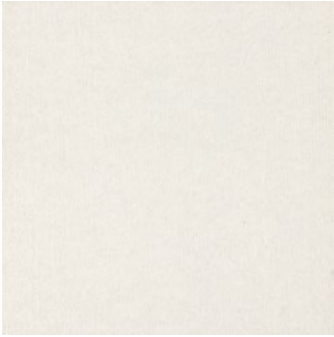


Kelp
KE18

Order samples at acoufelt.com/colorways

Colorways

ESSENTIALS



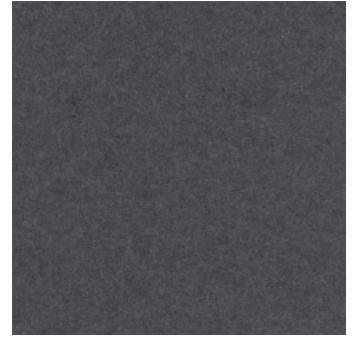
Talc
TA08



Limestone
LI07



Silt
SI06



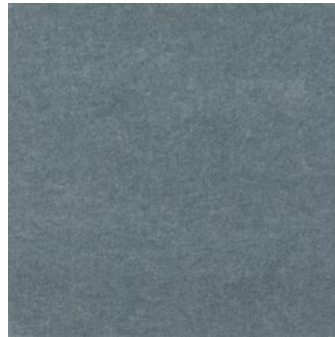
Shale
SH03



Pumice
PU05



Gypsum
GY04



Jade
JA02



Basalt
BA01

Order samples at acoufelt.com/colorways



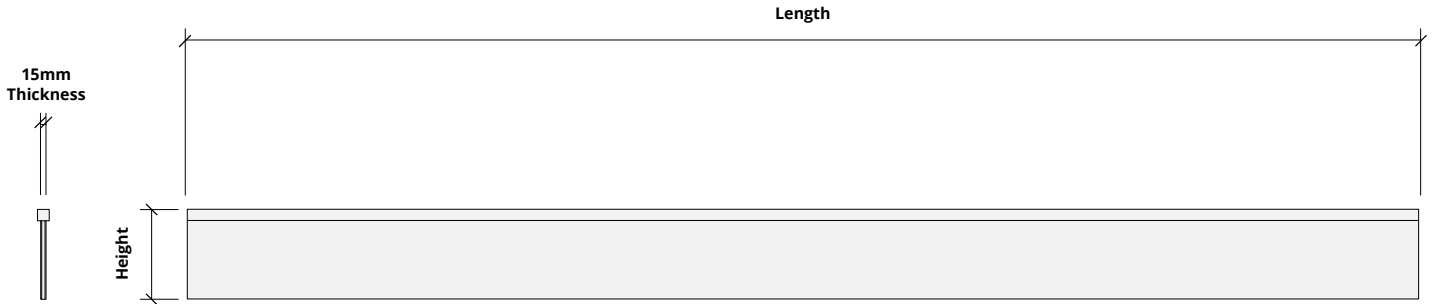
Call **800.966.8557** with questions or visit acoufelt.com for more product information, downloads, and colorways.

Sizes

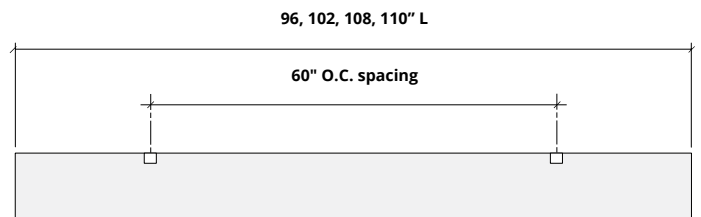
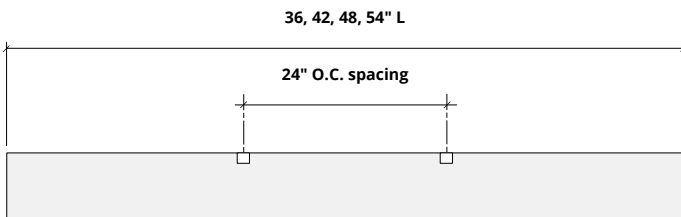
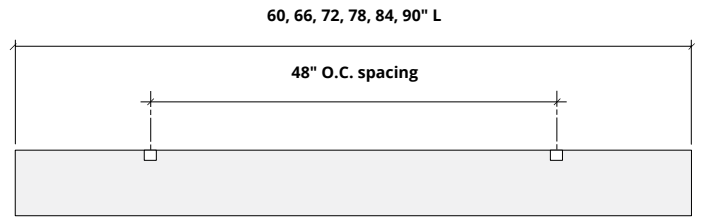
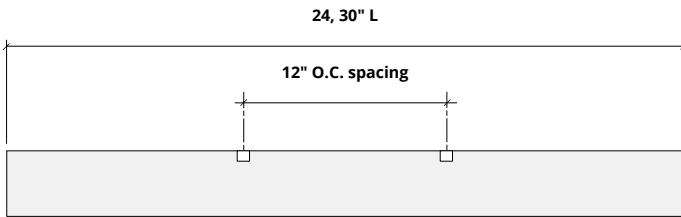
Standard Sizes	Height: 4" up to 12" H (2" increments) Length: 24" up to 110" L (6" increments) <i>Custom sizes available</i>
Thickness	1/2", 15mm (±10%) <i>3mm Naturals + 9mm Essentials + 3mm Naturals</i>

Hardware Spacing

24, 30" L	12" on center spacing
36, 42, 48, 54" L	24" on center spacing
60, 66, 72, 78, 84, 90" L	48" on center spacing
96, 102, 108, 110" L	60" on center spacing

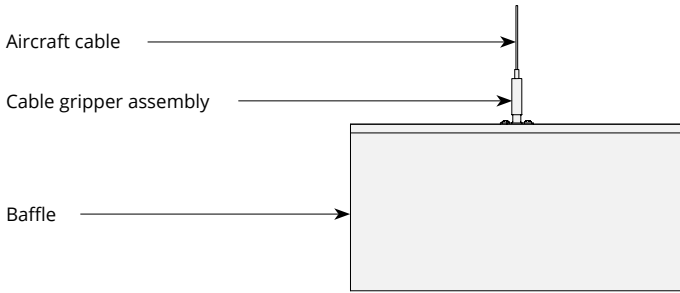


Hardware Spacing

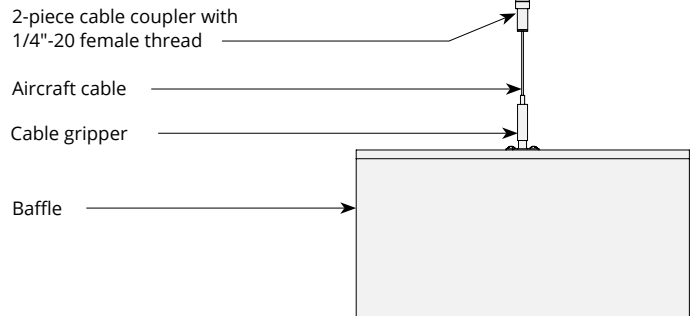


Mounting Methods

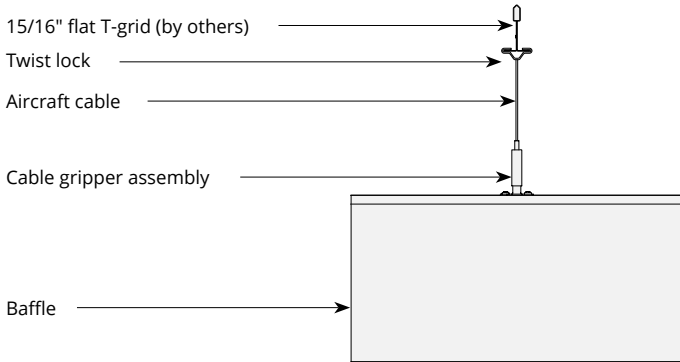
Cable



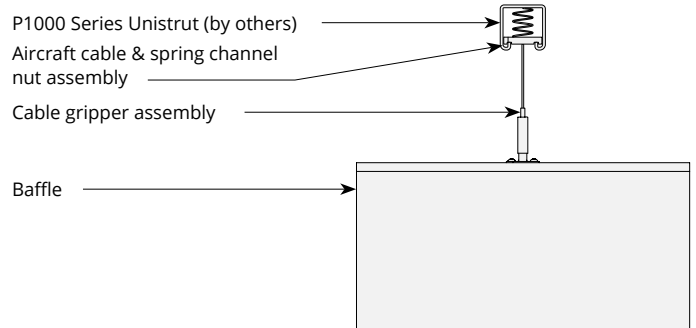
Cable to deck



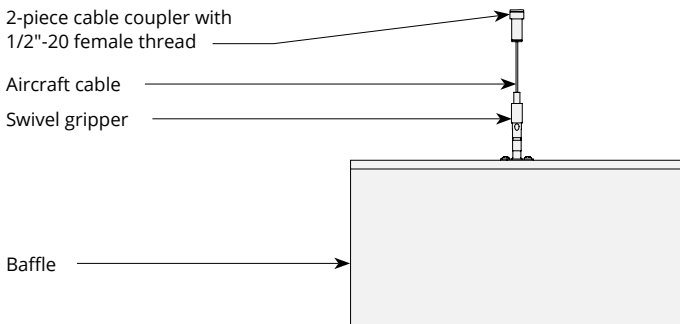
Cable to T-grid



Cable to Unistrut

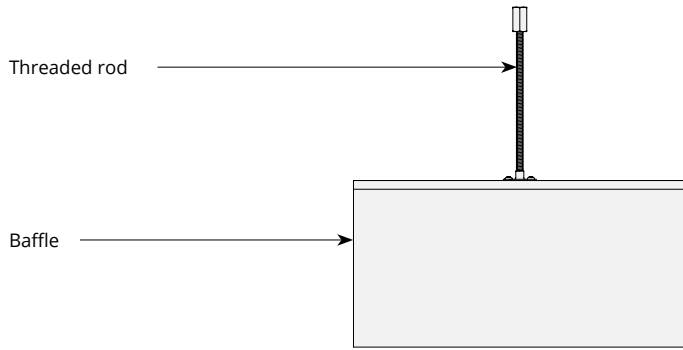


Swivel cable to deck

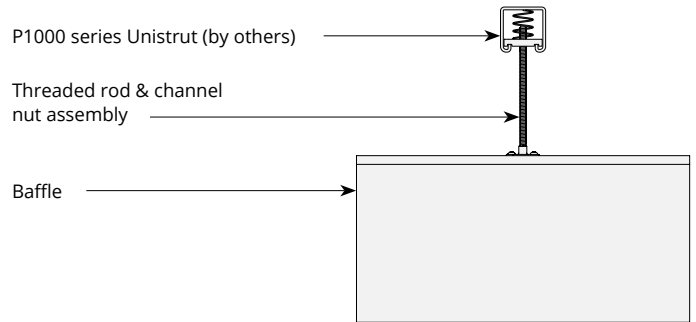


Mounting Methods cont'd.

Threaded rod



Threaded rod to Unistrut



Direct to Unistrut

