



Framework, Frameless Ceiling Grids

Premier Collection

Often less is more. Frameless's design provides an open ceiling aesthetic while delivering the perfect amount of sound-absorbing surface area for spaces where some noise is expected and acceptable. With an expansive offering of different thicknesses and heights, Frameless can be specified to be unique in different spaces. The Frameless design allows the utmost flexibility when installed around other ceiling components such as sprinklers, speakers, and lighting.

Specifications

Surface	Ceiling		
Material	FilaSorb™ polyester felt		
Thickness	1/2", 12mm (±10%)		
Weight	0.49 lb./ft ² (±10%)		
Standard Sizes	Cell	Height	Thickness
	2' x 2'	6, 8, 10,	2, 3, 4" T
	3' x 3'	or 12" H	
	4' x 4'		
	<i>Custom sizes available</i>		



Framework, Frameless in Pistachio

Technical

NRC Rating	1.65
Fire Test	ASTM E84, Class A Flame spread index: 15 Smoke developed index: 200
Colorfastness	ISO 105-B02, 6-7

Details

Lead Time	3 – 6 weeks
Origin	Manufactured and assembled in the US
Warranty	Product: 20 years* Colorfastness: 20 years*

* Conditions apply

Environmental

Recycled Content	Minimum 60%
Energy	Generated using 40% solar energy
Indoor Air Quality	VOC less than/equal to 0.5mg/m3
Recyclable	100%*
Certifications	Declare Certification - LBC Red List Free (third-party verified) SCS Global Indoor Advantage Gold

* PET is recyclable through participating partners.

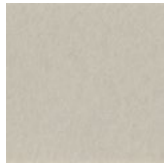


Colorways

PREMIUM



White
WH12



Almond
AL55



Pistachio
PI25



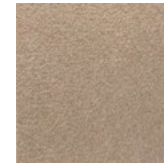
Celery
CE65



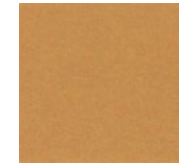
Metal
ME03



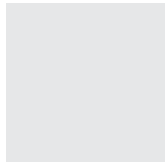
Flamingo
FL61



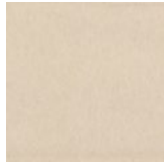
Quartz
QU67



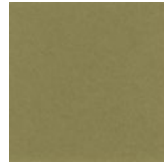
Turmeric
TU60



Platinum
PL04



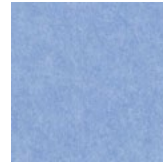
Pearl
PE21



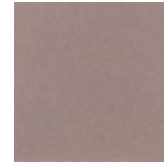
Eucalyptus
EU71



Sencha
SE58



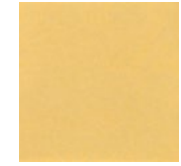
Periwinkle
PE23



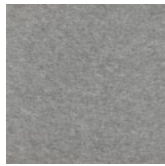
Amethyst
AM69



Valentine
VA70



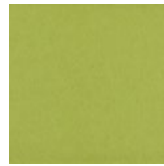
Wheat
WH68



Grey
GR02



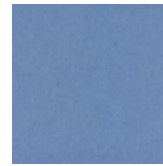
Ivory
IV11



Wasabi
WA29



Sea Salt
SE57



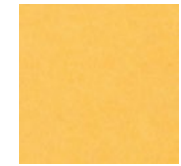
Marine
MA15



Lilac
LI13



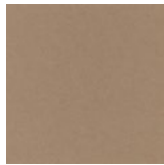
Peach
PE19



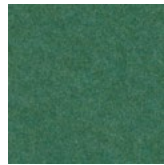
Popcorn
PO26



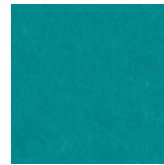
Slate
SL27



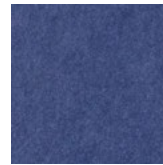
Umber
UM54



Thistle
TH28



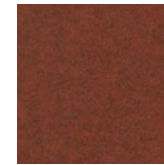
Peacock
PE20



Iris
IR10



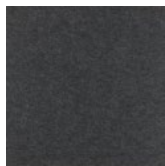
Berry
BE06



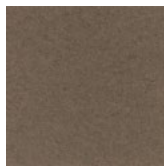
Peppercorn
PE22



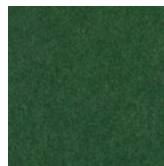
Carrot
CA08



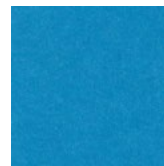
Charcoal
CH01



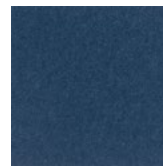
Walnut
WA56



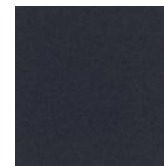
Oregano
OR18



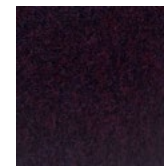
Azure
AZ05



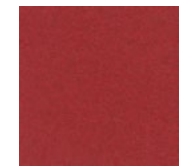
Granite
GR62



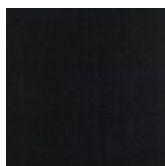
Flint
FL64



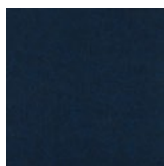
Shiraz
SH63



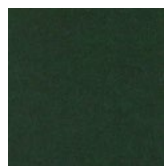
Currant
CU59



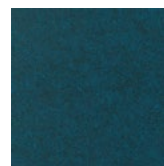
Piano Black
PI24



Midnight
MI16



Kale
KA12



Denim
DE09

Order samples at acoufelt.com/colorways



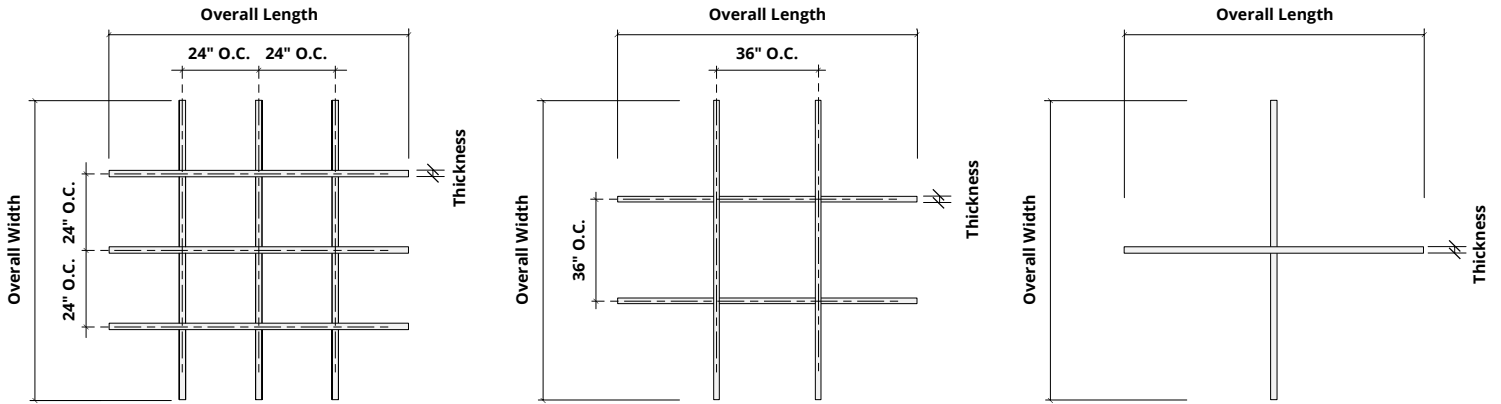
Call 800.966.8557 with questions or visit acoufelt.com for more product information, downloads, and colorways.

Sizes

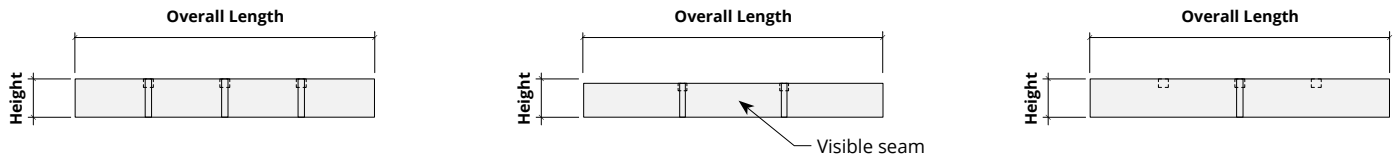
Standard Sizes	Cell	Height	Thickness
	2' x 2'	6, 8, 10,	2, 3, 4" T
	3' x 3'	or 12" H	
	4' x 4'		

Custom sizes available

Plans



Elevations



Perspectives



How to Specify

1. Choose Grid Size

2. Choose Slat Sizes

3. Choose Colorways

Grids are available in three size: 2' x 2', 3' x 3', and 4' x 4'.

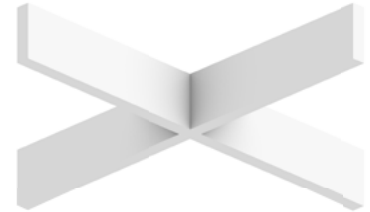
2' x 2'



3' x 3'



4' x 4'



1. Choose Grid Size

2. Choose Slat Sizes

3. Choose Colorways

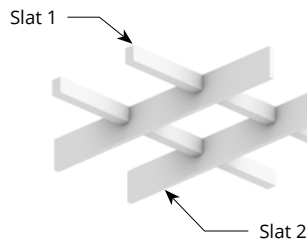
Slats are available in 2 size options.

A: Consistent Sizes



Slat Size
2" T x 6" H
2" T x 8" H
2" T x 10" H
2" T x 12" H
3" T x 6" H
3" T x 8" H
3" T x 10" H
3" T x 12" H
4" T x 6" H
4" T x 8" H
4" T x 10" H
4" T x 12" H

B: Varied Sizes



Height ratio from Slat 1 to Slat 2 is 2:1

Slat 1 Size	Slat 2 Size
2" T x 3" H	2" T x 6" H
2" T x 4" H	2" T x 8" H
2" T x 5" H	2" T x 10" H
2" T x 6" H	2" T x 12" H
3" T x 3" H	3" T x 6" H
3" T x 4" H	3" T x 8" H
3" T x 5" H	3" T x 10" H
3" T x 6" H	3" T x 12" H
4" T x 3" H	4" T x 6" H
4" T x 4" H	4" T x 8" H
4" T x 5" H	4" T x 10" H
4" T x 6" H	4" T x 12" H
2" T x 3" H	4" T x 6" H
2" T x 4" H	4" T x 8" H
2" T x 5" H	4" T x 10" H
2" T x 6" H	4" T x 12" H
4" T x 3" H	2" T x 6" H
4" T x 4" H	2" T x 8" H
4" T x 5" H	2" T x 10" H
4" T x 6" H	2" T x 12" H

1. Choose Slat Size

2. Choose Backer Panel Size

3. Choose Colorways

See colorway choices on the pages 3 and 4.

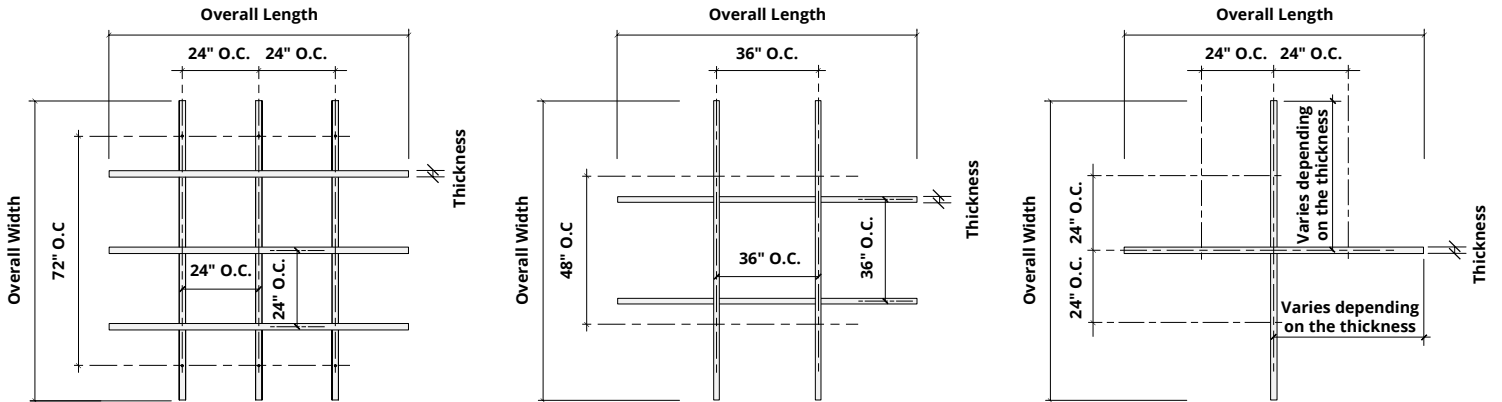


Call **800.966.8557** with questions or visit **acoufelt.com** for more product information, downloads, and colorways.

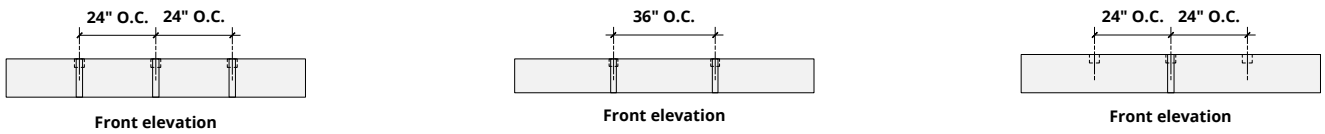
Hardware Spacing

2' x 2'	24" on center spacing
3' x 3'	36" on center spacing
4' x 4'	24" on center spacing

Plans

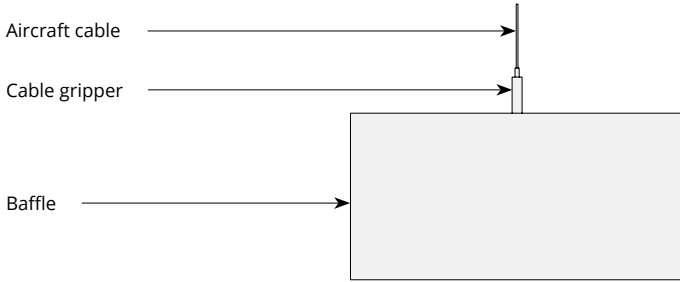


Elevations

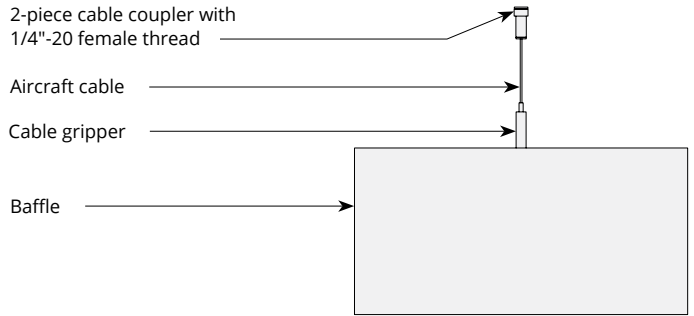


Mounting Methods

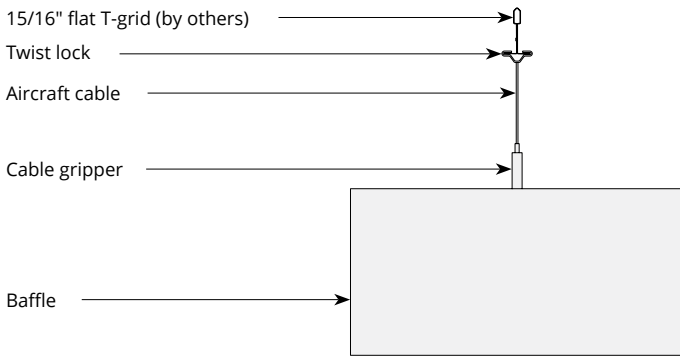
Cable



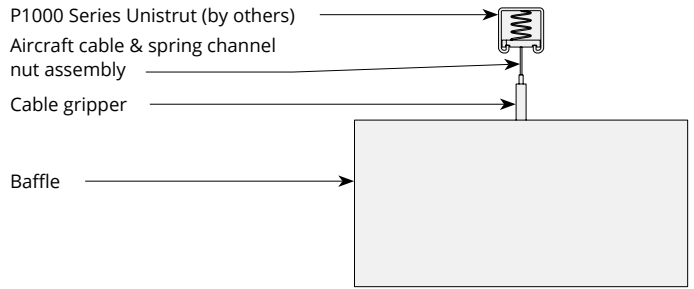
Cable to deck



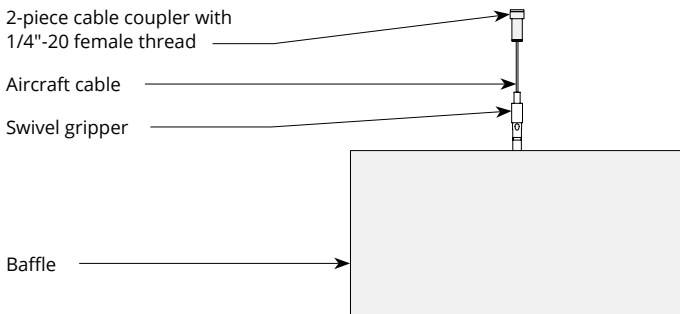
Cable to T-grid



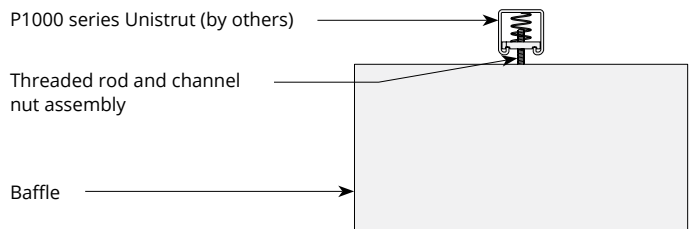
Cable to Unistrut



Swivel cable to deck

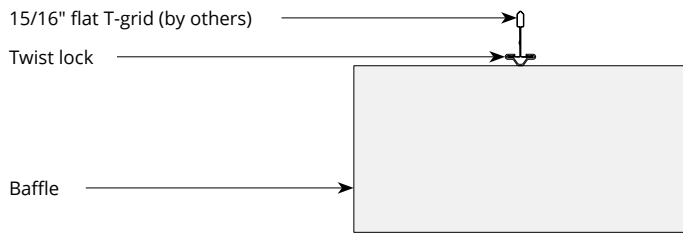


Direct to Unistrut



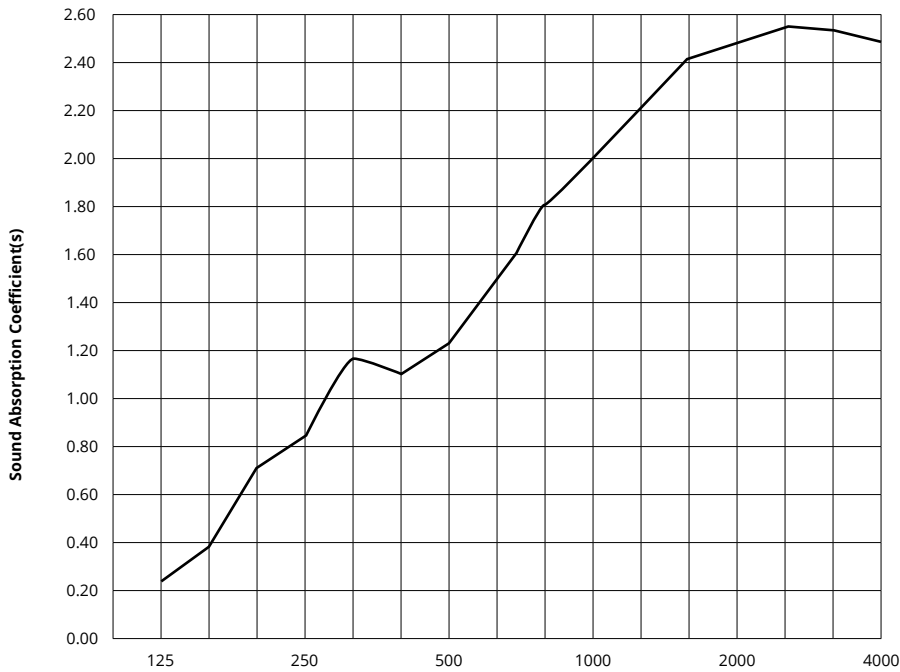
Mounting Methods

Twist lock to T-grid



Acoustic Performance

Test Method	ASTM E795-16
Install Method	J-600
Rating Method	ASTM C423-17
Mounting Method	Sample tested 6 baffles 110" L x 12" H x 3" T, hanging 600mm from floor and 152mm from each other
Test Results	NRC 1.65 SAA 1.68



Frequency f (Hz)	125	250	500	1000	2000	4000	NRC
3" Truss Baffle	0.26	0.86	1.25	2.02	2.49	2.49	1.65

What is a Noise Reduction Coefficient (NRC)?

You'll find the NRC rating in the specifications of all of our products. This acronym stands for Noise Reduction Coefficient, and is expressed as a single number, a rating that describes the degree to which acoustic products can absorb sound.

You can use NRC values to understand the overall performance of our acoustic wall and ceiling products. The higher the NRC, the better the product is at soaking up the sound.

Performance Indices: Noise Reduction Coefficient (NRC) results represent the absorption coefficients measured at the one third octave bands at 125, 250, 500, 1000, 2000 and 4000 Hz rounded to the nearest 0.05. Acoustic testing has been performed according to the methods mentioned above. Customization of installation of the product could alter the results. Sound Absorption Average (SAA) indicates the absorption coefficient average for the twelve one-third octave bands ranging between 200 and 2500 Hz.

