



# Filter

## Wall Panel

Premier Collection

Indulge in a sensory detox. By scrubbing unwanted sound from your environment, Filter imparts a welcome sense of stillness complemented by a whisper of visual interest. Choose from a range of sizes and solid colors to create a continuous sweep across seams and around curves—Filter attaches easily to any surface.

## Specifications

<b>Surface</b>	Wall
<b>Material</b>	FilaSorb™ polyester felt
<b>Thickness</b>	1/2", 12mm (±10%)
<b>Weight</b>	0.49 lb./ft <sup>2</sup> (±10%)
<b>Standard Sizes</b>	Width: 24" W Depth: 3" D Height: 48, 96, 108" H <i>Custom sizes available</i>



Filter Wall Panels in Slate

## Technical

<b>NRC Rating</b>	0.45
<b>Fire Test</b>	ASTM E84, Class A Flame spread index: 15 Smoke developed index: 200
<b>Water Sorption</b>	ASTM C1104-2019 (A Modified) Water sorbed by weight: 0.20% (based on a 12mm thick panel)
<b>Colorfastness</b>	ISO 105-B02, 6-7

## Details

<b>Lead Time</b>	3 – 6 weeks
<b>Origin</b>	Manufactured and assembled in the US
<b>Warranty</b>	Product: 20 years* Colorfastness: 20 years*

\* Conditions apply

## Environmental

<b>Recycled Content</b>	Minimum 60%
<b>Energy</b>	Generated using 40% solar energy
<b>Indoor Air Quality</b>	VOC less than/equal to 0.5mg/m <sup>3</sup>
<b>Recyclable</b>	100%*
<b>Certifications</b>	Declare Certification - LBC Red List Free (third-party verified) SCS Global Indoor Advantage Gold

\* PET is recyclable through participating partners.

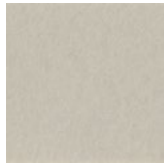


# Colorways

## PREMIER



White  
WH12



Almond  
AL55



Celery  
CE65



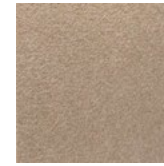
Sencha  
SE58



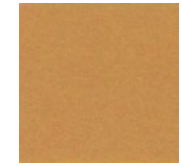
Metal  
ME03



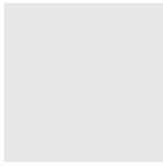
Flamingo  
FL61



Quartz  
QU67



Turmeric  
TU60



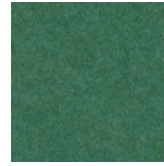
Platinum  
PL04



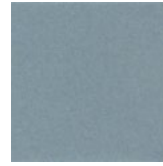
Pearl  
PE21



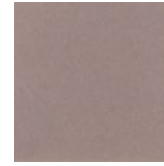
Pistachio  
PI25



Thistle  
TH28



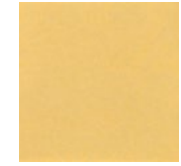
Stonewash  
ST72



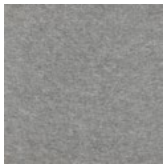
Amethyst  
AM69



Valentine  
VA70



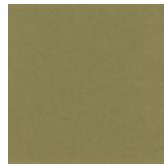
Wheat  
WH68



Grey  
GR02



Ivory  
IV11



Eucalyptus  
EU71



Peacock  
PE20



Periwinkle  
PE23



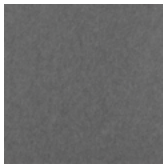
Lilac  
LI13



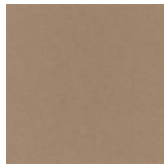
Peach  
PE19



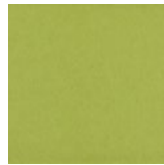
Popcorn  
PO26



Slate  
SL27



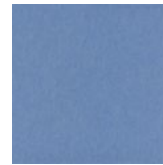
Umber  
UM54



Wasabi  
WA29



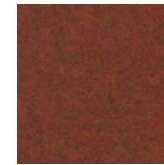
Sea Salt  
SE57



Marine  
MA15



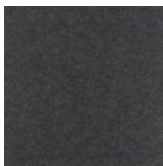
Berry  
BE06



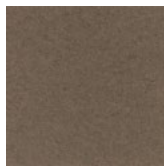
Peppercorn  
PE22



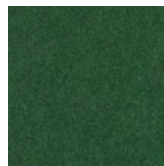
Carrot  
CA08



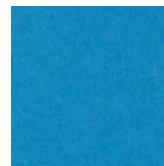
Charcoal  
CH01



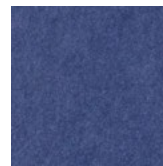
Walnut  
WA56



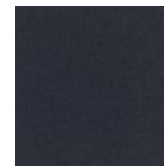
Oregano  
OR18



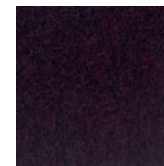
Azure  
AZ05



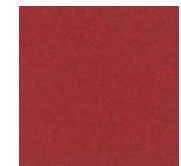
Iris  
IR10



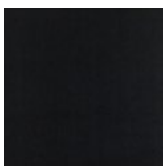
Flint  
FL64



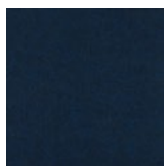
Shiraz  
SH63



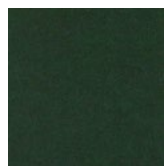
Currant  
CU59



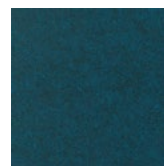
Piano Black  
PI24



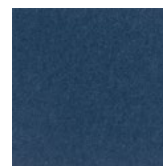
Midnight  
MI16



Kale  
KA12



Denim  
DE09



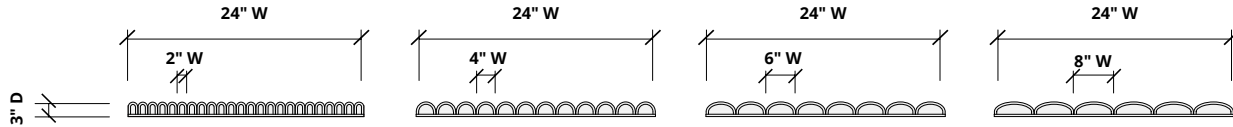
Granite  
GR62



# Sizes

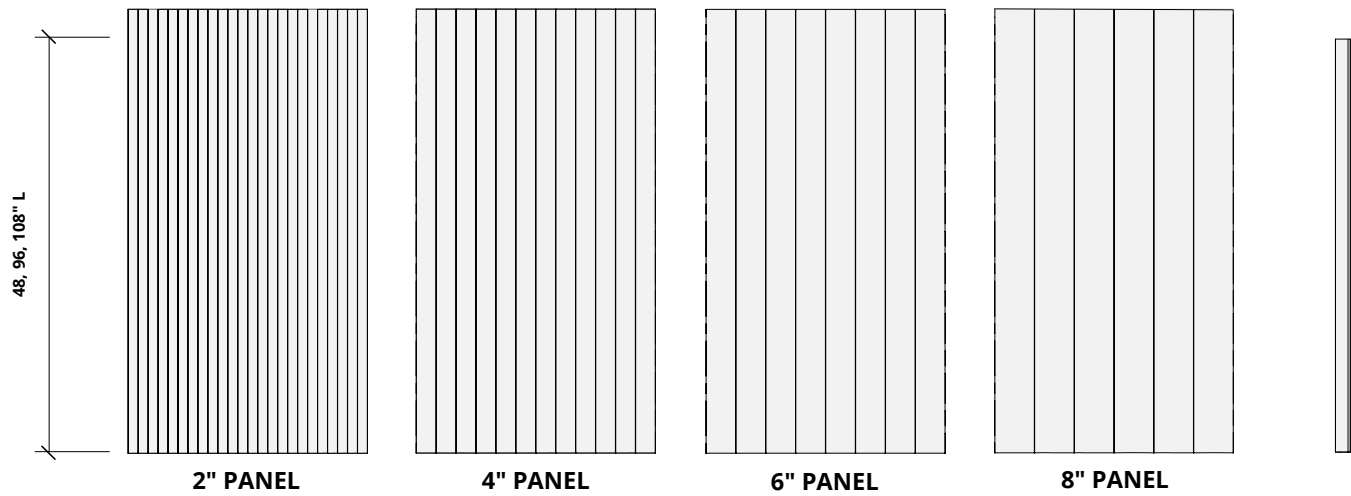
<b>Width</b>	Panel width: 24" W Scallop widths: 2, 4, 6, 8" W
<b>Depth</b>	3" D
<b>Length</b>	48, 96, 108" L <i>Custom sizes available</i>

## Plan



## Elevation

## Side Elevation

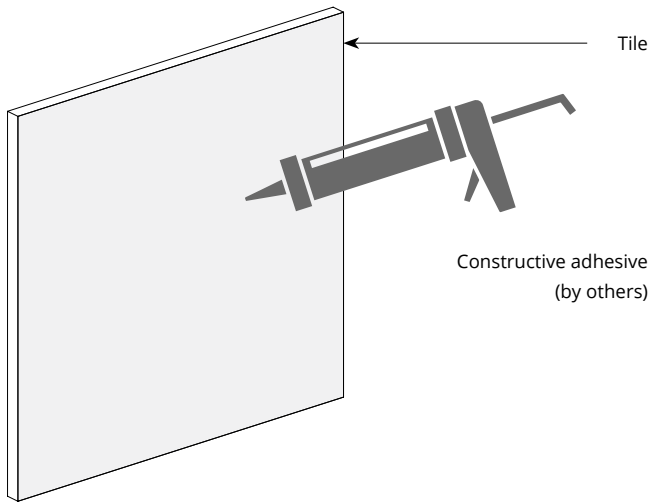


12mm  
thickness

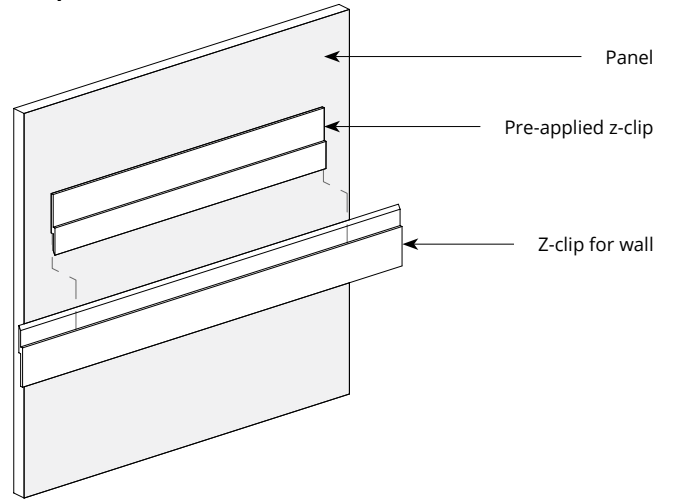


# Mounting Methods

## Construction adhesive

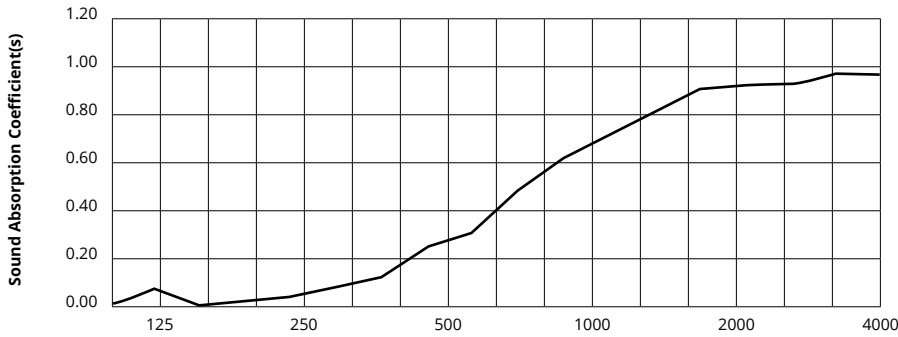


## Z-clip wall mount



# Acoustic Performance

<b>Test Method</b>	ASTM C423-09a
<b>Install Method</b>	A
<b>Rating Method</b>	AS ISO 11654-2002
<b>Test Results</b>	NRC 0.45, no air gap SAA 0.43, no air gap



Frequency f (Hz)	125	250	500	1000	2000	4000	NRC
12mm	0.06	0.02	0.23	0.61	0.89	0.95	0.45

## What is a Noise Reduction Coefficient (NRC)?

You'll find the NRC rating in the specifications of all of our products. This acronym stands for Noise Reduction Coefficient, and is expressed as a single number, a rating that describes the degree to which acoustic products can absorb sound.

You can use NRC values to understand the overall performance of our acoustic wall and ceiling products. The higher the NRC, the better the product is at soaking up the sound.

*Performance Indices: Noise Reduction Coefficient (NRC) results represent the absorption coefficients measured at the one third octave bands at 125, 250, 500, 1000, 2000 and 4000 Hz rounded to the nearest 0.05. Acoustic testing has been performed according to the methods mentioned above. Customization of installation of the product could alter the results. Sound Absorption Average (SAA) indicates the absorption coefficient average for the twelve one-third octave bands ranging between 200 and 2500 Hz.*