

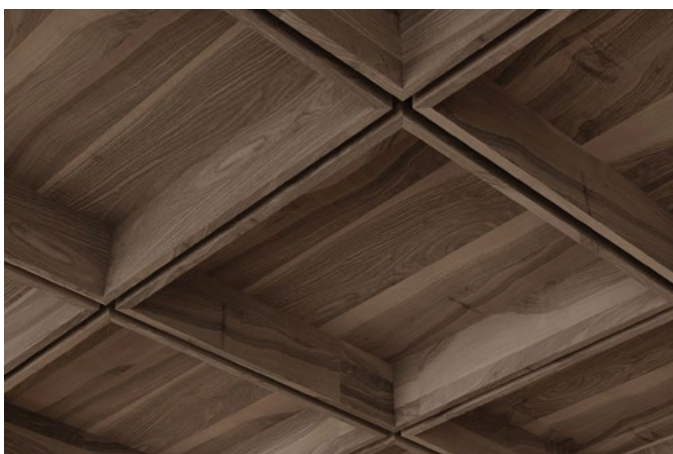
Waffle Ceiling Frames

WoodGrain Collection

Engineered to use less material, Waffle ceiling frames are light and easy to install anywhere. Plus, with a range of sizes and the offering of both woodgrain and solid colors, Waffle offers exceptional creative freedom as you add texture, sound management, and sophistication to any space.

Specifications

Surface	Ceiling		
Material	FilaSorb™ polyester felt		
Thickness	1/2", 12mm (±10%)		
Weight	0.49 lb./ft ² (±10%)		
Standard Sizes	Slat Thickness	Height	Width x Length
	1" T	4, 6, 8" H	24" W x 24" L 48" W x 48" L
Compatible T-grid	Type	Layout	
	15/16" Flat	Standard 24" x 24" Standard 48" x 48"	



Waffle Ceiling Frame in Black Walnut

Technical

NRC Rating	0.45 Pending product testing
Fire Test	ASTM E84, Class A Flame spread index: 15 Smoke developed index: 200
Water Sorption	ASTM C1104-2019 (A Modified) Water sorbed by weight: 0.20% (based on a 12mm thick panel)
Colorfastness	ISO 105-B02, 6-7

Details

Lead Time	3 – 6 weeks
Origin	Manufactured and assembled in the US
Warranty	Product: 20 years* Colorfastness: 20 years*

* Conditions apply

Environmental

Recycled Content	Minimum 60%
Energy	Generated using 40% solar energy
Indoor Air Quality	VOC less than/equal to 0.5mg/m3
Recyclable	100%*
Certifications	Declare Certification - LBC Red List Free (third-party verified) SCS Global Indoor Advantage Gold

* PET is recyclable through participating partners.

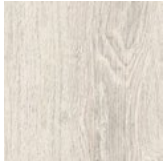


Colorways

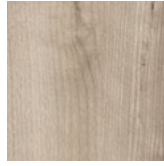
WOODGRAIN



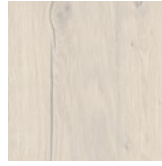
Boat Shed
WQ02



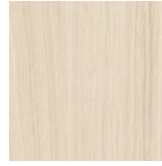
Picket Fence
WQ01



Loft
WQ06



Nordic Plank
WQ15



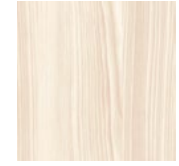
White Oak
WQ13



Baltic Birch
WQ12



White Elm
WQ07



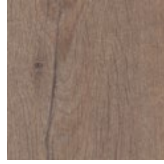
Lyed Larch
WQ30



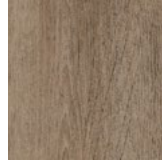
Woodland Fog
WQ22



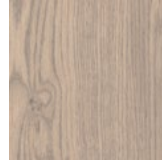
Weathered Slate
WQ14



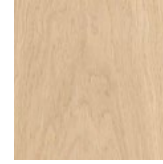
French Bobbin
WQ08



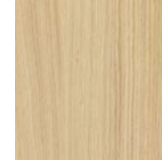
Boardwalk
WQ10



Mountain Lodge
WQ24



Wine Barrel
WQ03



Natural Oak
WQ16



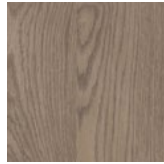
Knotty Spruce
WQ29



Shadow Oak
WQ28



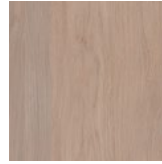
Driftwood
WQ21



Mocha Legno
WQ25



Teak
WQ18



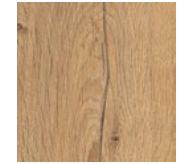
Fumed Oak
WQ19



European Larch
WQ17



Petrified Ash
WQ23



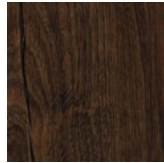
Log Cabin
WQ04



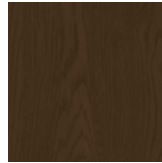
Charred Larch
WQ09



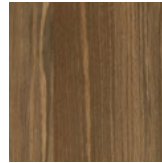
Barn Door
WQ05



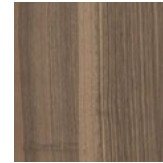
Antique Chest
WQ11



Scorched Timber
WQ26



Espresso Oak
WQ27



Black Walnut
WQ20

Order samples at acoufelt.com/colorways



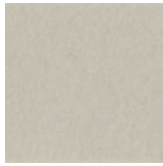
Call **800.966.8557** with questions or visit acoufelt.com for more product information, downloads, and colorways.

Colorways

PREMIER (Additional backer color options)



White
WH12



Almond
AL55



Celery
CE65



Sencha
SE58



Metal
ME03



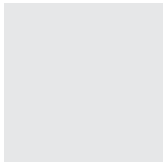
Flamingo
FL61



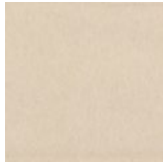
Quartz
QU67



Turmeric
TU60



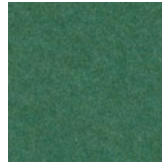
Platinum
PL04



Pearl
PE21



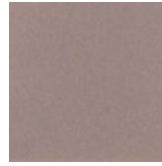
Pistachio
PI25



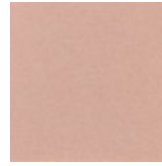
Thistle
TH28



Stonewash
ST72



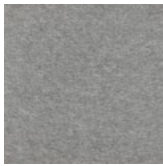
Amethyst
AM69



Valentine
VA70



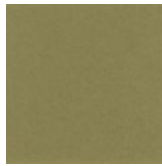
Wheat
WH68



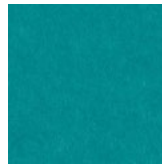
Grey
GR02



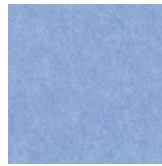
Ivory
IV11



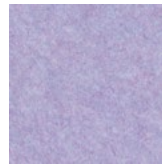
Eucalyptus
EU71



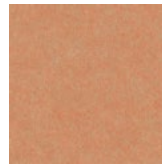
Peacock
PE20



Periwinkle
PE23



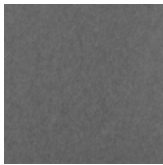
Lilac
LI13



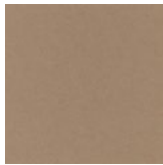
Peach
PE19



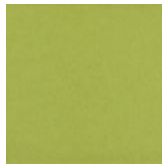
Popcorn
PO26



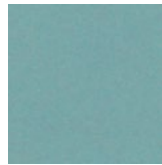
Slate
SL27



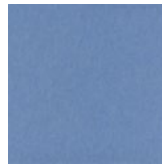
Umber
UM54



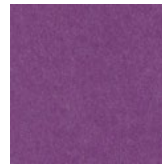
Wasabi
WA29



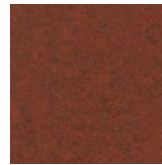
Sea Salt
SE57



Marine
MA15



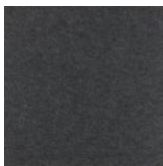
Berry
BE06



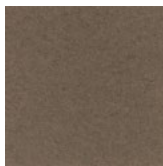
Peppercorn
PE22



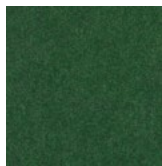
Carrot
CA08



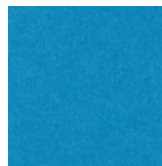
Charcoal
CH01



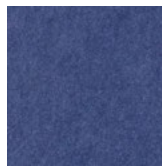
Walnut
WA56



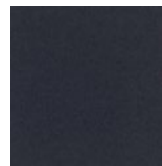
Oregano
OR18



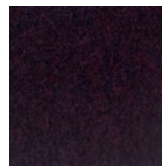
Azure
AZ05



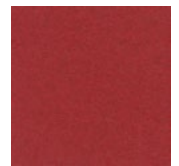
Iris
IR10



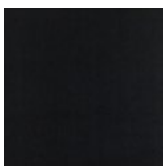
Flint
FL64



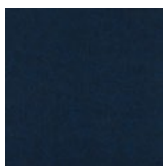
Shiraz
SH63



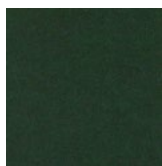
Currant
CU59



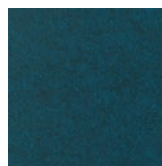
Piano Black
PI24



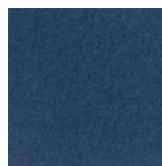
Midnight
MI16



Kale
KA12



Denim
DE09



Granite
GR62

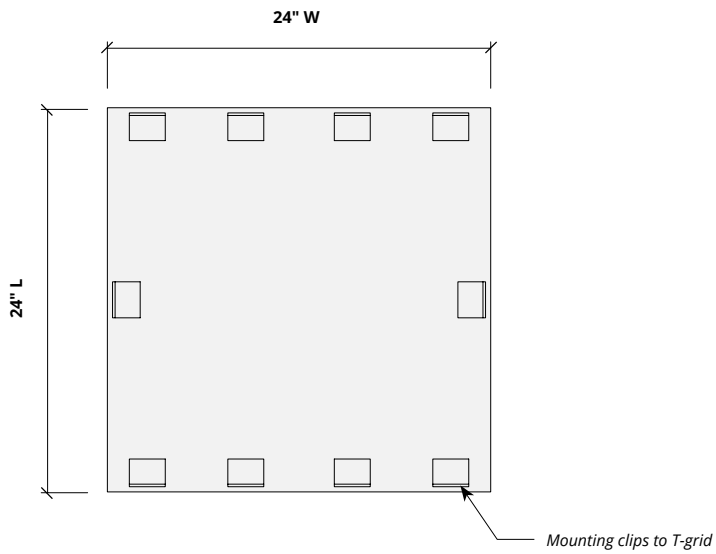


Sizes

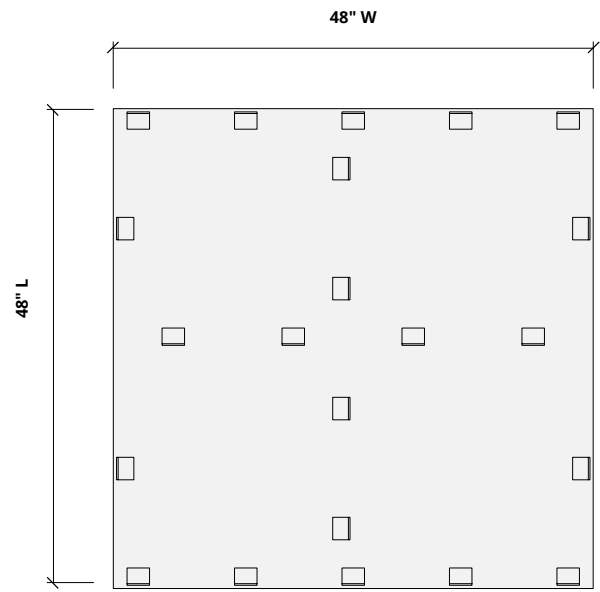
Standard Sizes	Slat Thickness	Height	Width x Length
	1" T	4, 6, 8" H	24" W x 24" L 48" W x 48" L
Thickness	1/2", 12mm (±10%)		

Compatible T-grid	Type	Layout
	15/16" Flat	Standard 24" x 24" Standard 48" x 48"

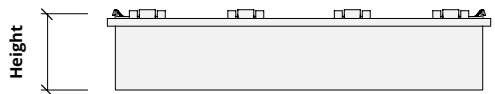
Plan



Plan



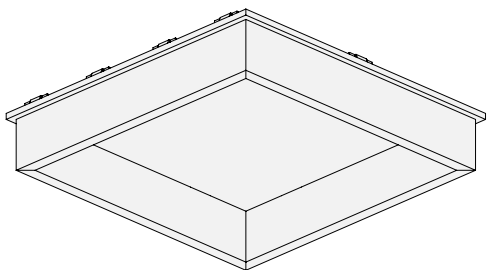
Elevation



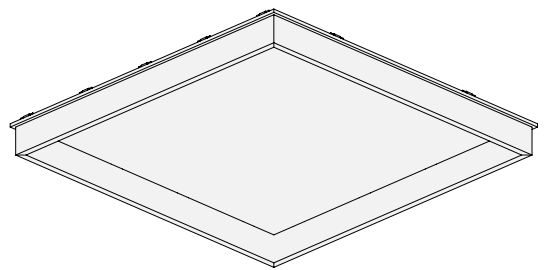
Elevation



Perspective



Perspective



How to Specify

1. Choose Sizes

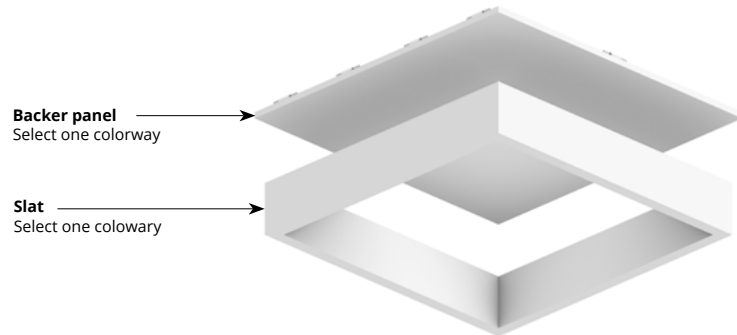
2. Choose Colorways

Select desired height and grid size.

1. Choose Sizes

2. Choose Colorway

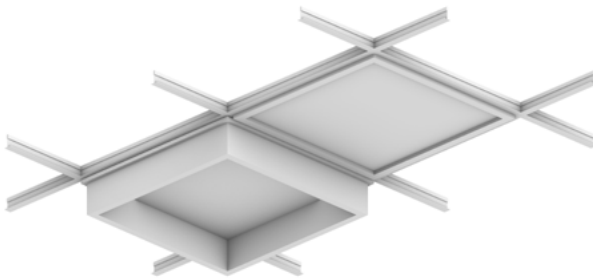
Select one colorway for your slats and one colorway for your backer panel; or one colorway for both. See pages 3 and 4 for colorways.



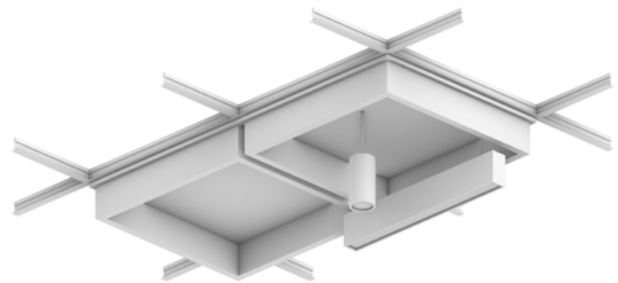
Product ships assembled.

Lighting Coordination

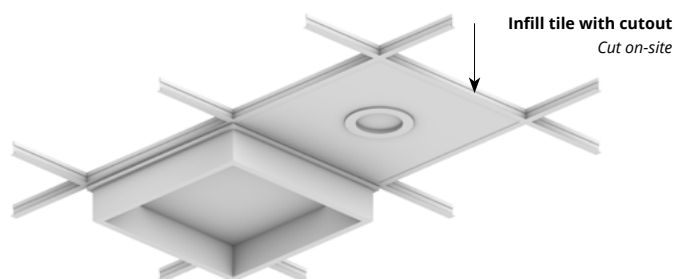
24" x 24", 24" x 48" Grid light



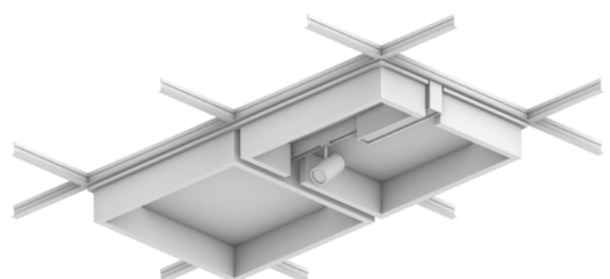
Drop pendant light



Recessed light

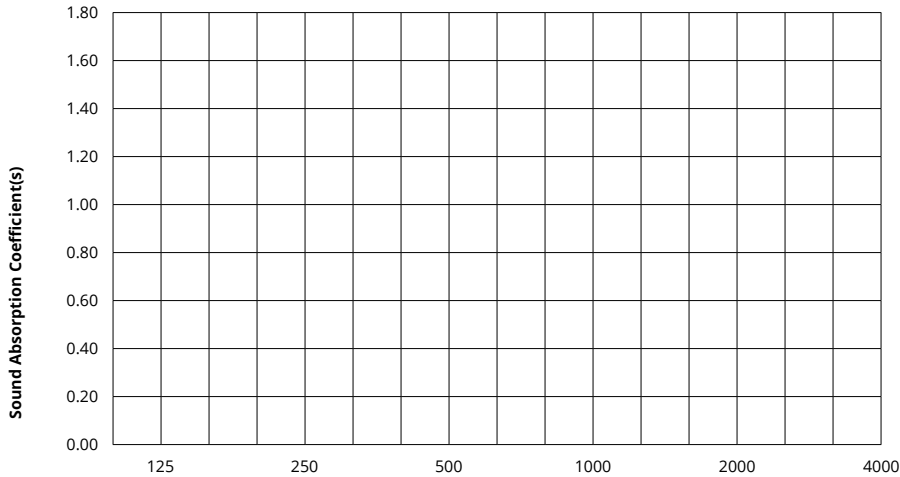


Grid mounted light (track, pendant)



Acoustic Performance

Test Method	ASTM E795-16
Install Method	A
Rating Method	ISO 11654-1997
Test Results	Product testing in progress



	Frequency f (Hz)	125	250	500	1000	2000	4000	NRC

What is a Noise Reduction Coefficient (NRC)?

You'll find the NRC rating in the specifications of all of our products. This acronym stands for Noise Reduction Coefficient, and is expressed as a single number, a rating that describes the degree to which acoustic products can absorb sound.

You can use NRC values to understand the overall performance of our acoustic wall and ceiling products. The higher the NRC, the better the product is at soaking up the sound.

Performance Indices: Noise Reduction Coefficient (NRC) results represent the absorption coefficients measured at the one third octave bands at 125, 250, 500, 1000, 2000 and 4000 Hz rounded to the nearest 0.05. Acoustic testing has been performed according to the methods mentioned above. Customization of installation of the product could alter the results. Sound Absorption Average (SAA) indicates the absorption coefficient average for the twelve one-third octave bands ranging between 200 and 2500 Hz.