

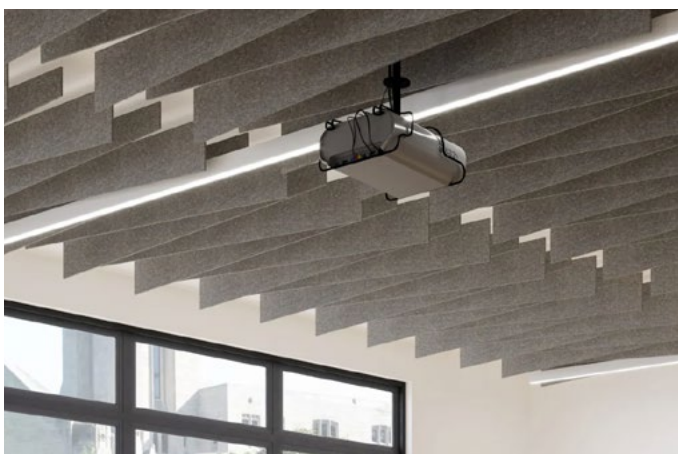
Wing Ceiling Baffles

Premier Collection

Wing ceiling baffles give designers a new angle to play with scale and form, light and shadow, color and tone. Combine them with other baffle shapes if you like. They easily install to create a sound-absorbing mass, drop room reverberation, and add visual interest anywhere. Ceiling baffles are a great first course in your soundscaping strategy.

Specifications

Surface	Ceiling
Material	FilaSorb™ polyester felt
Thickness	1/2", 12mm (±10%) 1", 24mm (±10%)
Weight	0.49 lb./ft ² (±10%) 0.98 lb./ft ² (±10%)
Standard Sizes	<i>Height ranges from end-to-end (2:1)</i> Height A: 4" up to 24" (2" increments) Height B: 2" up to 12" (1" increments) Lengths: Range from 12" up to 110" <i>See page 4 for more details. Custom sizes available</i>



Wing Ceiling Baffle in Grey

Technical

NRC Rating	12mm 1.30 24mm 1.15
Fire Test	ASTM E84, Class A Flame spread index: 15 Smoke developed index: 200
Water Sorption	ASTM C1104-2019 (A Modified) Water sorbed by weight: 0.20% (based on a 12mm thick panel)
Colorfastness	ISO 105-B02, 6-7

Details

Lead Time	3 – 6 weeks
Origin	Manufactured and assembled in the US
Warranty	Product: 20 years* Colorfastness: 20 years*

* Conditions apply

Environmental

Recycled Content	Minimum 60%
Energy	Generated using 40% solar energy
Indoor Air Quality	VOC less than/equal to 0.5mg/m3
Recyclable	100%*
Certifications	Health Product Declaration (HPD)** Environmental Product Declaration Declare Certification - LBC Red List Free (third-party verified) SCS Global Indoor Advantage Gold

* PET is recyclable through participating partners.

** HPD only applies to 12mm thickness.



© The Health Product Declaration® logo is a registered trademark of HPD Collaborative.



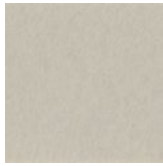
Call **800.966.8557** with questions or visit acoufelt.com for more product information, downloads, and colorways.

Colorways

PREMIER



White
WH12



Almond
AL55



Celery
CE65



Sencha
SE58



Metal
ME03



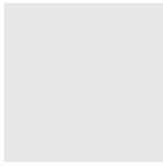
Flamingo
FL61



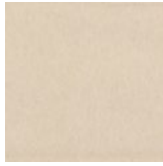
Quartz
QU67



Turmeric
TU60



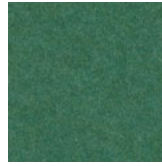
Platinum
PL04



Pearl
PE21



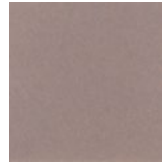
Pistachio
PI25



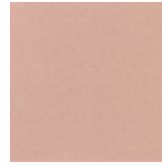
Thistle
TH28



Stonewash
ST72



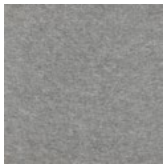
Amethyst
AM69



Valentine
VA70



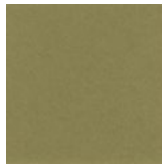
Wheat
WH68



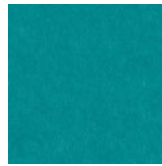
Grey
GR02



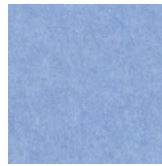
Ivory
IV11



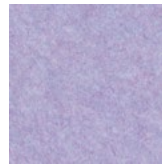
Eucalyptus
EU71



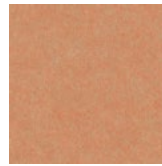
Peacock
PE20



Periwinkle
PE23



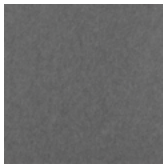
Lilac
LI13



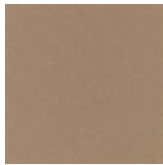
Peach
PE19



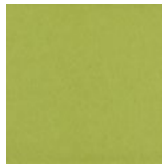
Popcorn
PO26



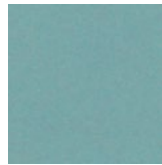
Slate
SL27



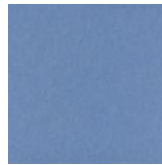
Umber
UM54



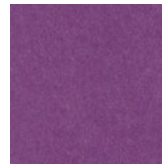
Wasabi
WA29



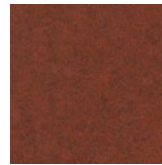
Sea Salt
SE57



Marine
MA15



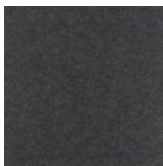
Berry
BE06



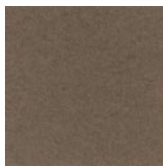
Peppercorn
PE22



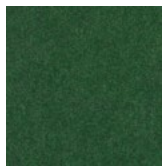
Carrot
CA08



Charcoal
CH01



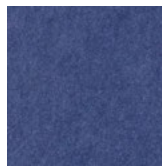
Walnut
WA56



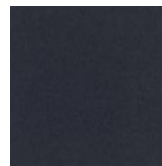
Oregano
OR18



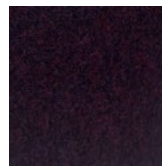
Azure
AZ05



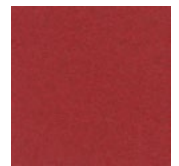
Iris
IR10



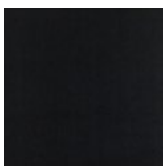
Flint
FL64



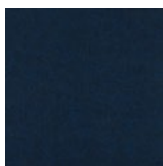
Shiraz
SH63



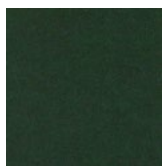
Currant
CU59



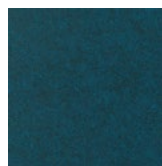
Piano Black
PI24



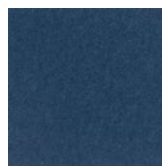
Midnight
MI16



Kale
KA12



Denim
DE09



Granite
GR62

Order samples at acoufelt.com/colorways



Call 800.966.8557 with questions or visit acoufelt.com for more product information, downloads, and colorways.

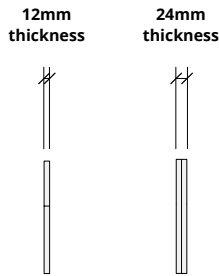
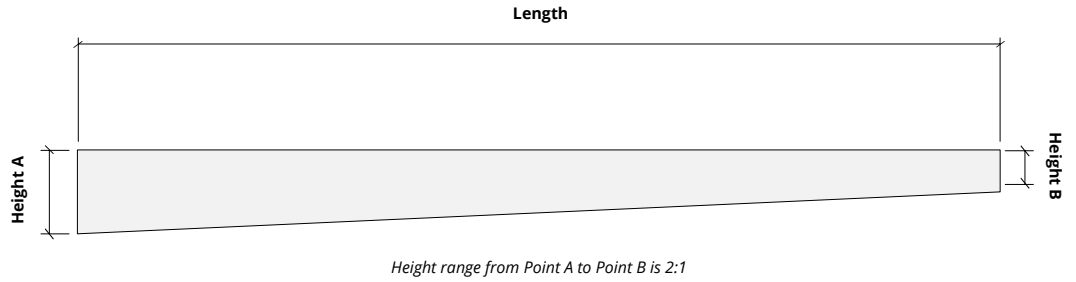
Sizes

Standard Heights *Height ranges from end-to-end (2:1)*
 Height A: 4" up to 24" (2" increments)
 Height B: 2" up to 12" (1" increments)
Custom sizes available

Standard Lengths 12, 18, 24, 30, 36, 42, 48, 54, 60, 66, 72, 78, 84, 90, 96, 102, 108, 110"L
Custom sizes available

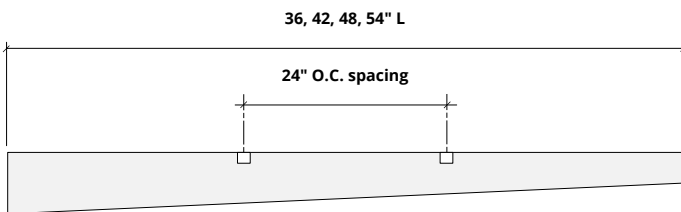
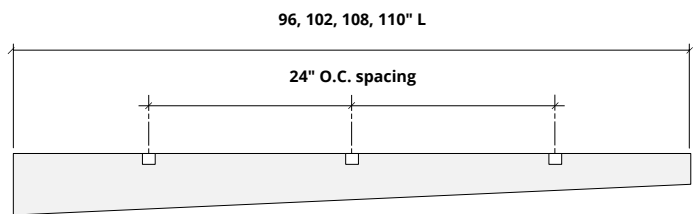
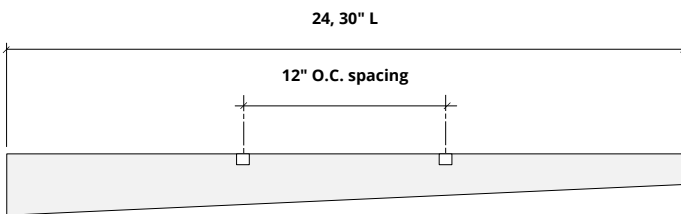
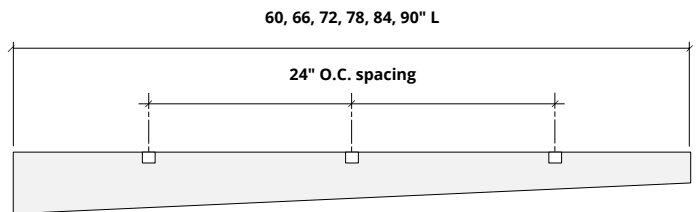
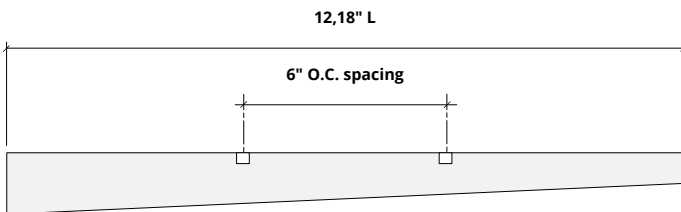
Thickness 1/2", 12mm (±10%)
 1", 24mm (±10%)

Height A	Height B
4"	2"
6"	3"
8"	4"
10"	5"
12"	6"
14"	7"
16"	8"
18"	9"
20"	10"
22"	11"
24"	12"



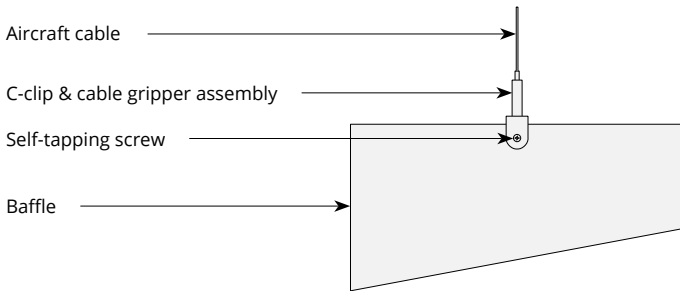
Hardware Spacing

12, 18" L	6" on center spacing
24, 30" L	12" on center spacing
36, 42, 48, 54" L	24" on center spacing
60, 66, 72, 78, 84, 90" L	24" on center spacing
96, 102, 108, 110" L	30" on center spacing

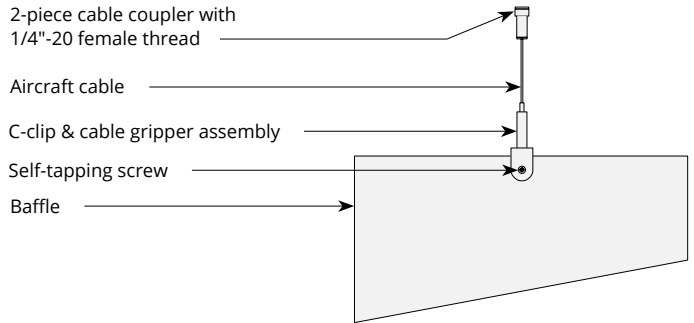


Mounting Methods

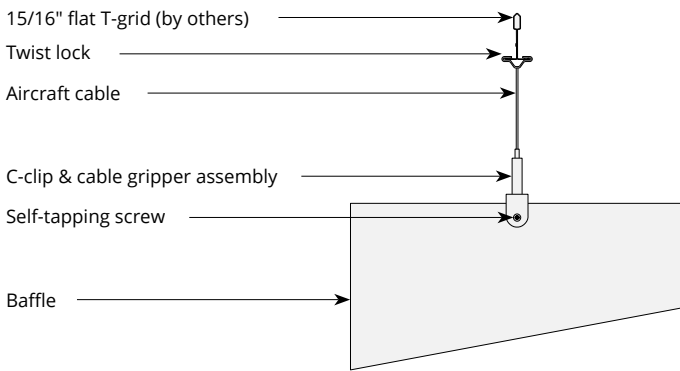
Cable



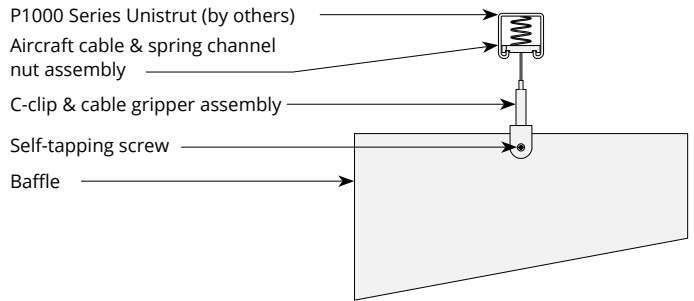
Cable to deck



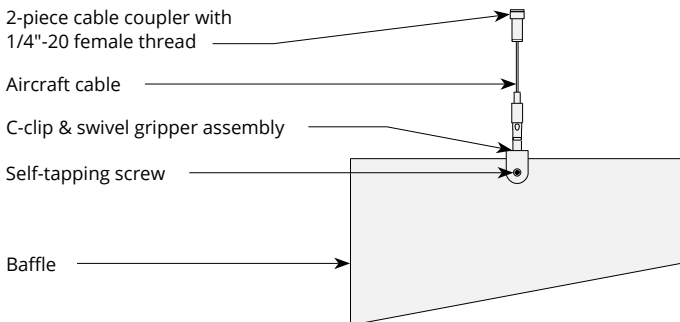
Cable to T-grid



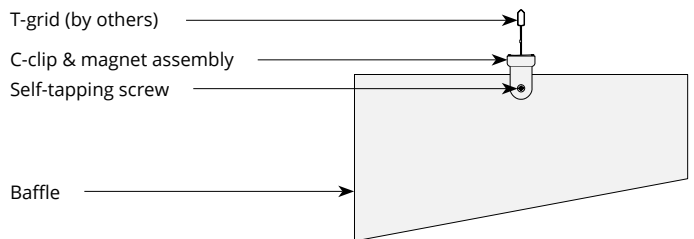
Cable to Unistrut



Swivel cable to deck

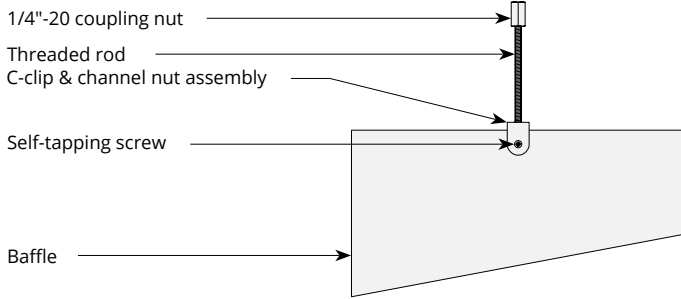


Magnet to T-grid

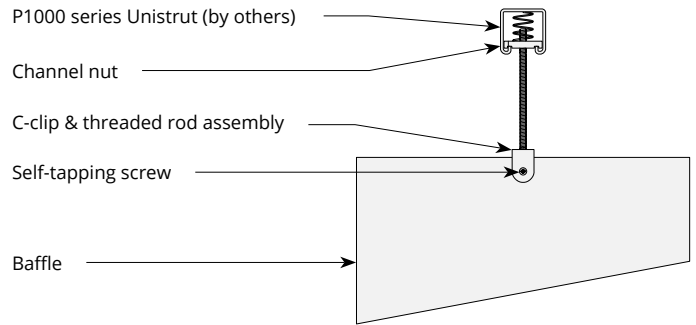


Mounting Methods cont'd.

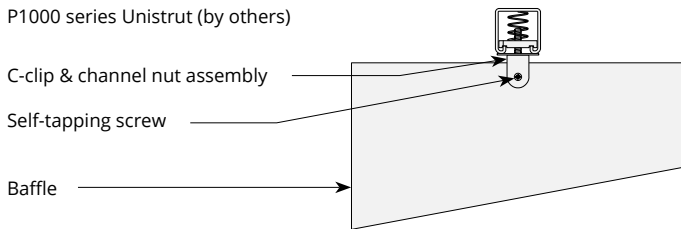
Threaded rod



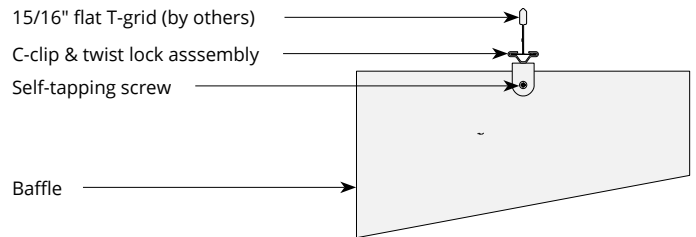
Threaded rod to Unistrut



Direct to Unistrut

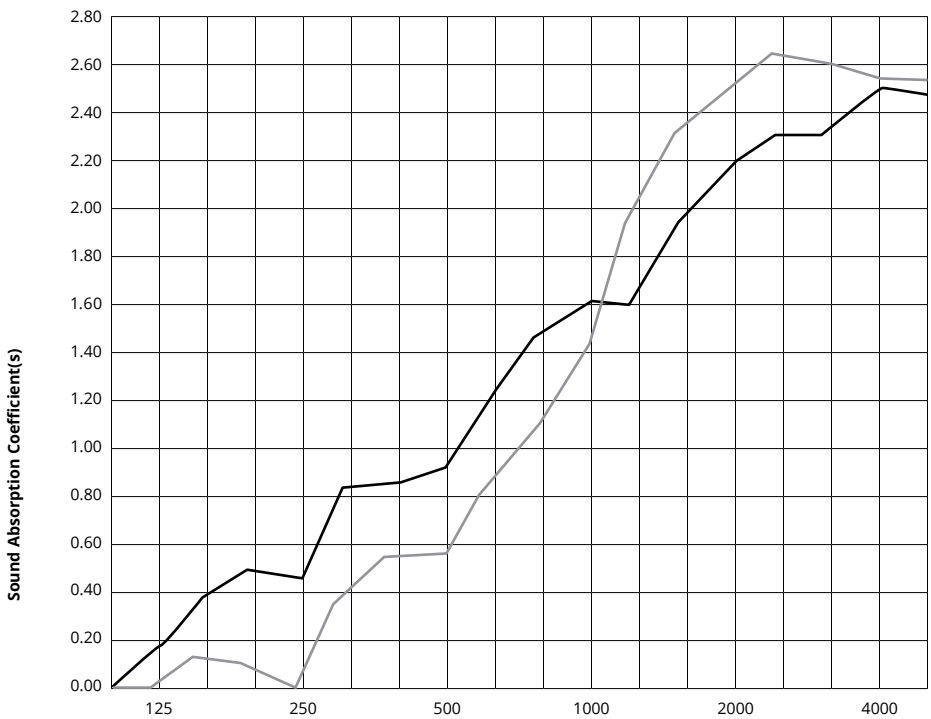


Twist lock to T-grid



Acoustic Performance

Test Method	ASTM E795-16
Install Method	J-600
Rating Method	ASTM C423-17
Mounting Method	Sample tested 6 baffles 110"L x 12"D, 12mm and 24mm thickness, sample hanging 600mm from floor and 6" O.C. from each other
Test Results	<p>12mm NRC 1.30 SAA 1.32, no air gap</p> <p>24mm NRC 1.15</p>



	Frequency f (Hz)	125	250	500	1000	2000	4000	NRC
	12mm	0.17	0.44	.93	1.62	2.20	2.51	1.30
	24mm	0.01	0.00	0.56	1.45	2.52	2.55	1.15

What is a Noise Reduction Coefficient (NRC)?

You'll find the NRC rating in the specifications of all of our products. This acronym stands for Noise Reduction Coefficient, and is expressed as a single number, a rating that describes the degree to which acoustic products can absorb sound.

You can use NRC values to understand the overall performance of our acoustic wall and ceiling products. The higher the NRC, the better the product is at soaking up the sound.

Performance Indices: Noise Reduction Coefficient (NRC) results represent the absorption coefficients measured at the one third octave bands at 125, 250, 500, 1000, 2000 and 4000 Hz rounded to the nearest 0.05. Acoustic testing has been performed according to the methods mentioned above. Customization of installation of the product could alter the results. Sound Absorption Average (SAA) indicates the absorption coefficient average for the twelve one-third octave bands ranging between 200 and 2500 Hz.