



Fracture Wall Panels

Essentials Collection

Add depth and energy to your walls or break up large expanses with lively patterns. Fracture wall panels provide practical, effective sound management in a unique and visually appealing way. Combine your preferred color and linework design to make a space your own.

Specifications

Surface	Ceiling
Material	WhisperTex™ polyester felt
Thickness	3/8", 9mm (±10%) 3/4", 18mm (±10%)
Weight	0.34 lb./ft ² (±10%)
Standard Sizes	48" W x 108" H <i>Custom sizes available</i>



Fracture Metropolis Wall Panels in Limestone

Technical

NRC Rating	Material: 0.35 Product: Testing is pending
Fire Test	ASTM E84, Class 1 Flame spread index: 7 Smoke developed index: 160
Colorfastness	ISO 105-B02, 4

Details

Lead Time	3 – 6 weeks
Origin	Manufactured and assembled in the US
Warranty	Product: 12 years* Colorfastness: 12 years*

* Conditions apply

Environmental

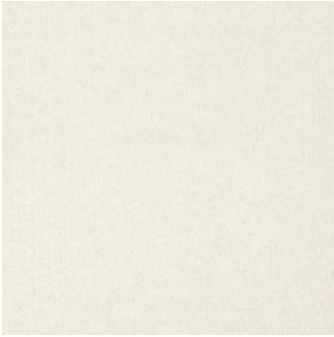
Recycled Content	Minimum 55%
Indoor Air Quality	VOC less than/equal to 0.5mg/m ³
Recyclable	100%*
Certifications	TVOC Emissions Rate

* PET is recyclable through participating partners.

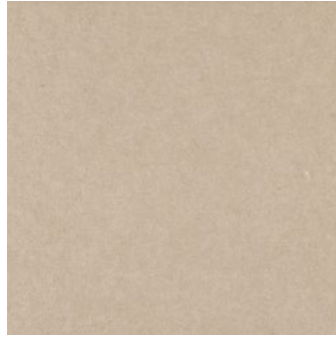


Colorways

ESSENTIALS



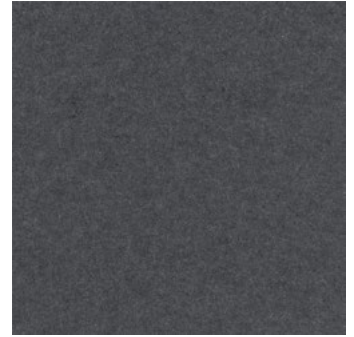
Talc
TA08



Limestone
LI07



Silt
SI06



Shale
SH03



Pumice
PU05



Gypsum
GY04



Jade
JA02



Basalt
BA01

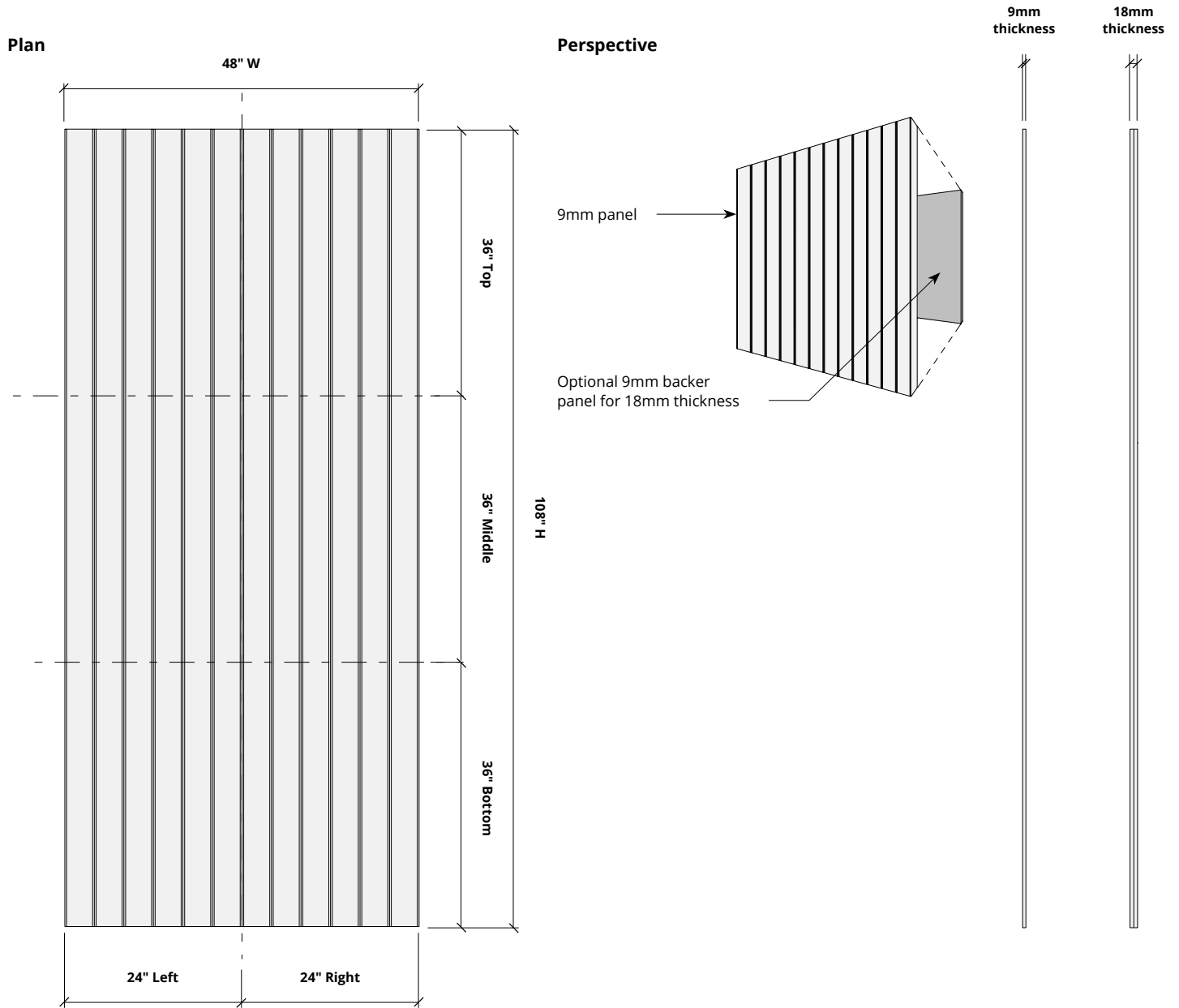
Order samples at acoufelt.com/colorways



Call **800.966.8557** with questions or visit acoufelt.com for more product information, downloads, and colorways.

Sizes

Standard Sizes	48" W x 108" H <i>Custom sizes available</i>
Thickness	3/8", 9mm (±10%) 3/4", 18mm (±10%)



* Product available as full panels or as sections of a panel as filler pieces.
Choose any of the standard height or segments (i.e. bottom right, middle left, etc) to fill the space as needed.

How to Specify

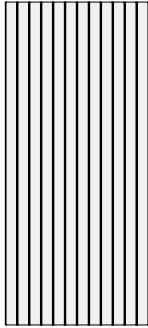
1. Choose Panel Pattern

2. Choose Colorways

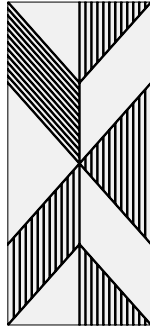
Select desired panel pattern. See recommended layouts for larger designs.



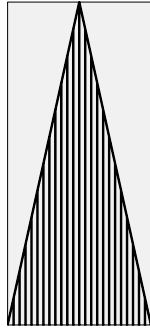
CHEVRON



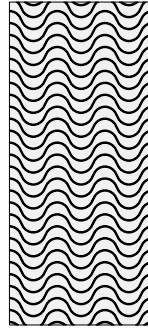
FINELINE



METROPOLIS



PENNANT



WAVELENGTH

1. Choose Panel Pattern

2. Choose Colorways

See colorways on page 3.

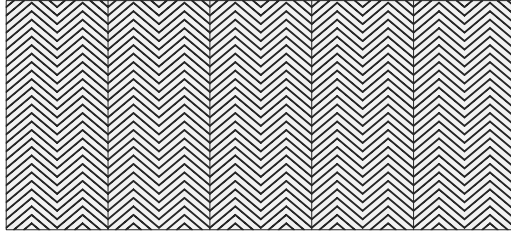


Recommended Layouts

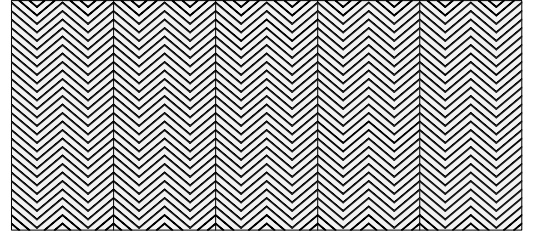
Chevron



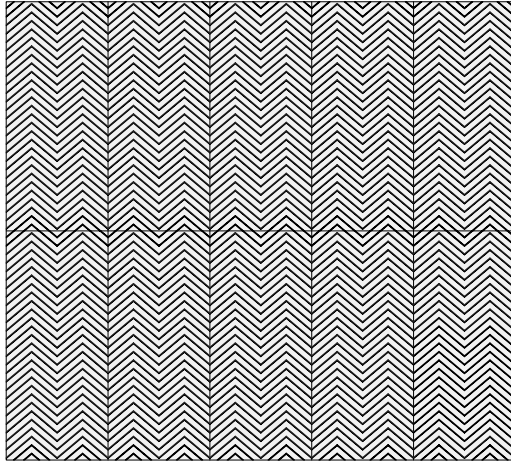
Layout 1



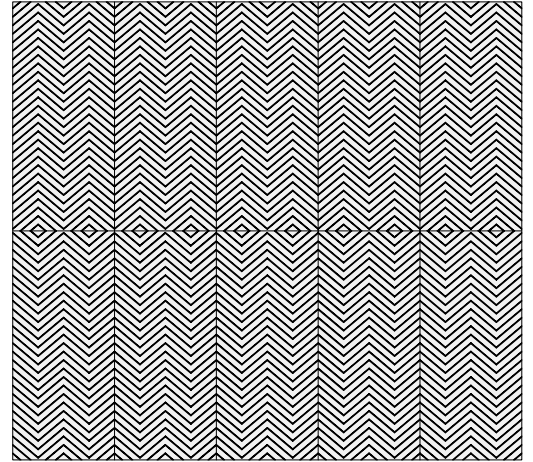
Layout 2



Layout 3

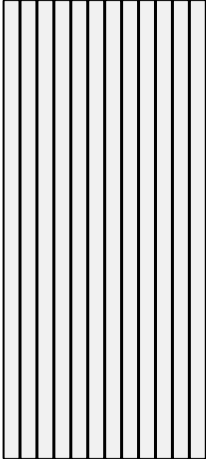


Layout 4

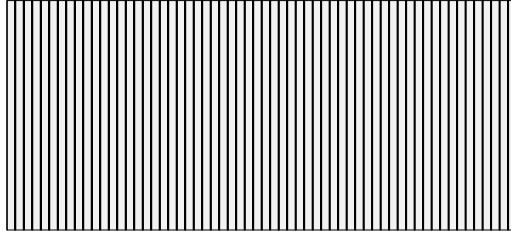


Recommended Layouts

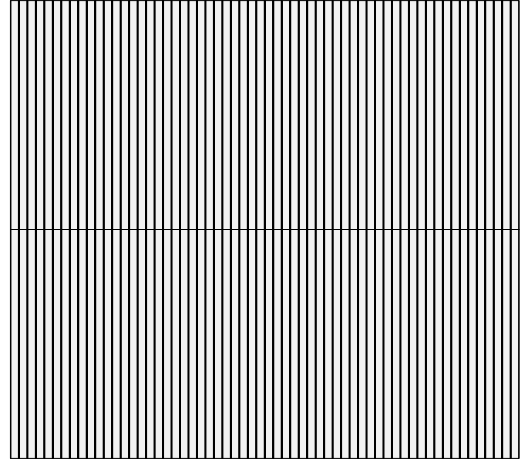
Fineline



Layout 1

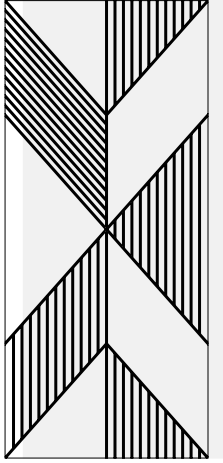


Layout 2

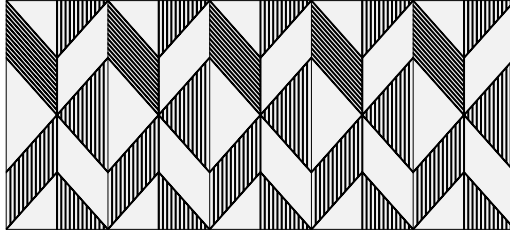


Recommended Layouts

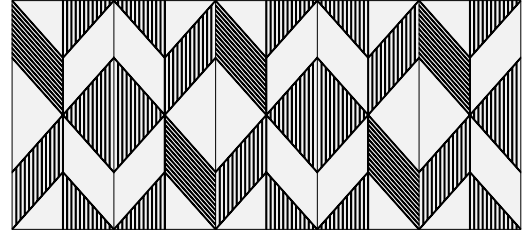
Metropolis



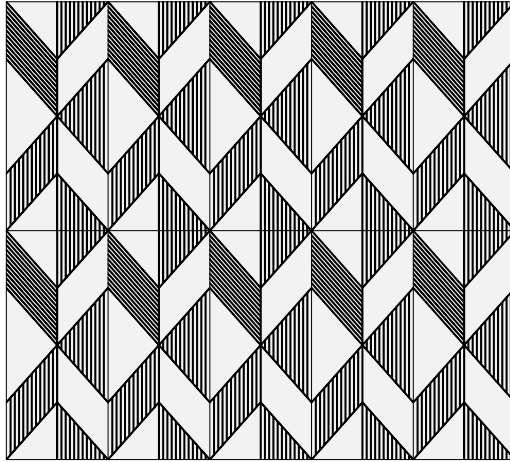
Layout 1



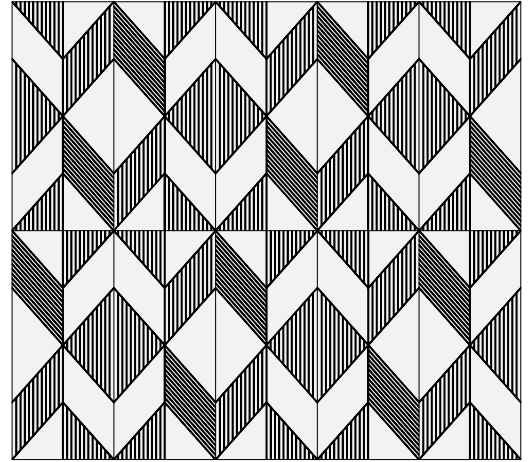
Layout 2



Layout 3

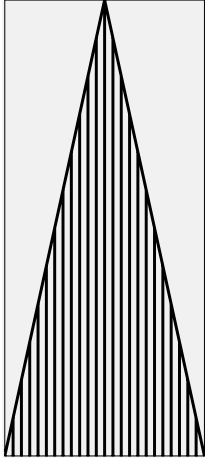


Layout 4

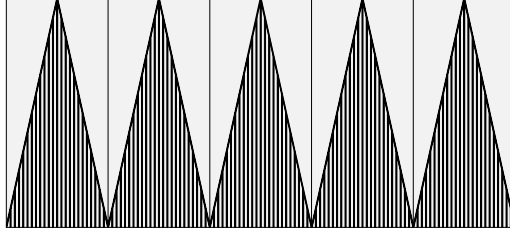


Recommended Layouts

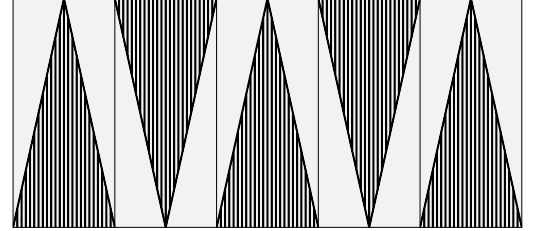
Pennant



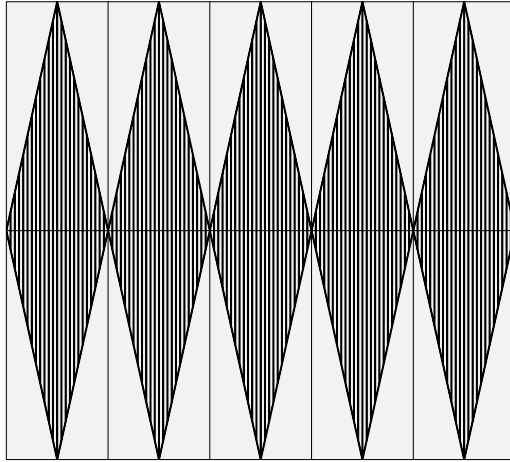
Layout 1



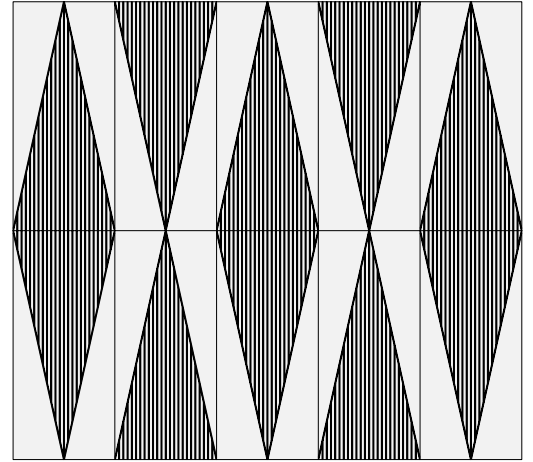
Layout 2



Layout 3

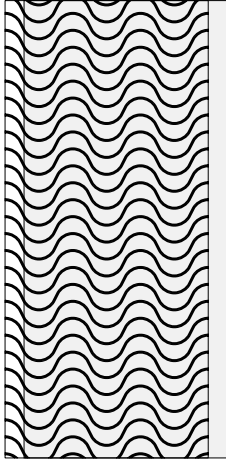


Layout 4

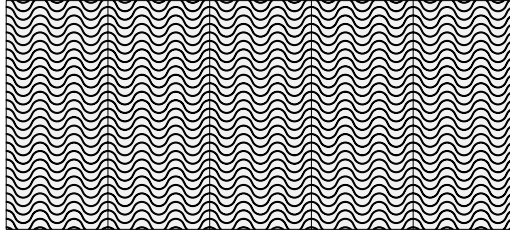


Recommended Layouts

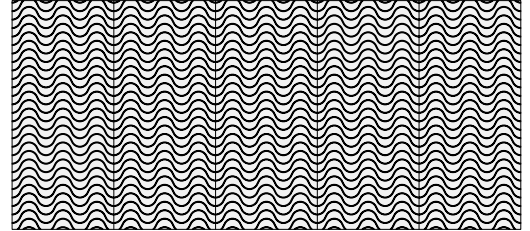
Wavelength



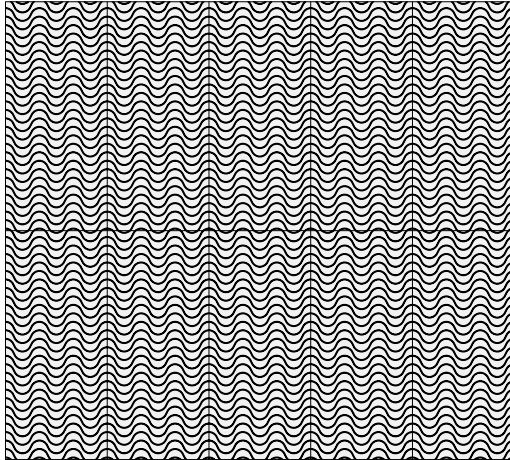
Layout 1



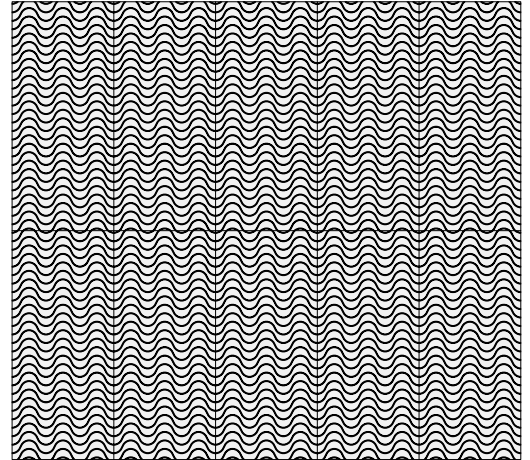
Layout 2



Layout 3

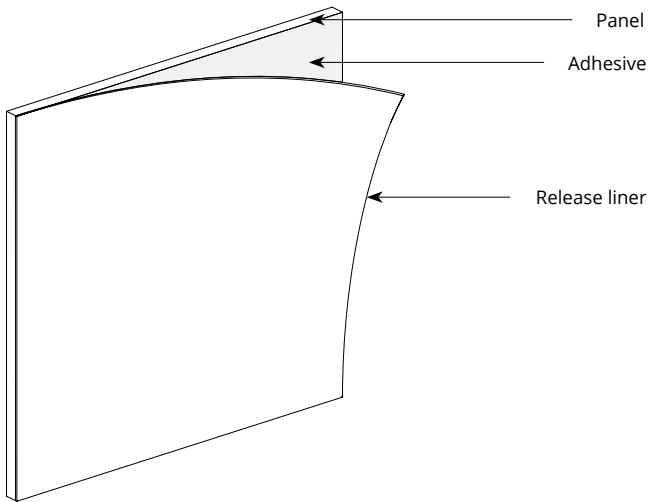


Layout 4

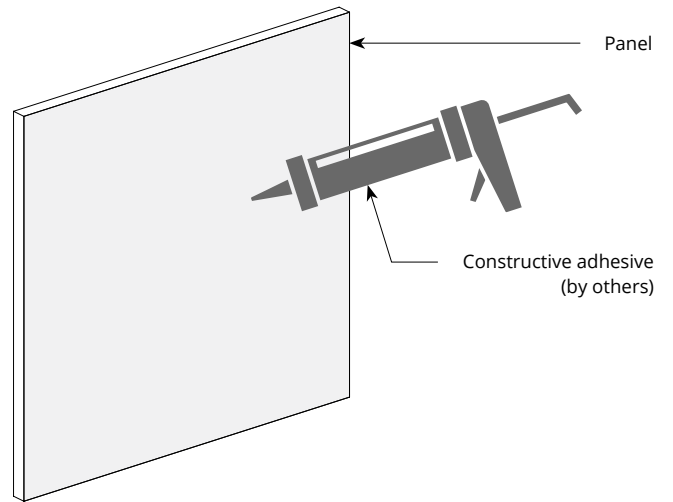


Mounting Methods

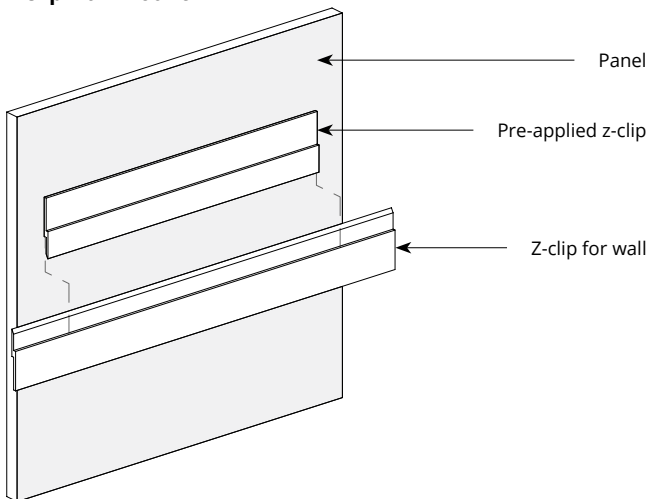
Adhesive backing



Construction adhesive



Z-clip wall mount



** For wall mount applications only.*

