

Canopy

Ceiling Clouds

Naturals Collection

Refresh your space and how people experience it. A suspended canopy of raw wool baffles beautifully dampens sound and creates a more relaxed, sustaining environment. Rectangular panels with two-inch raised edges reflect the scale of today's open spaces, adding volume as well as greater sound-absorbing surface area.

Specifications

Surface	Ceiling
Material	100% wool
Thickness	1/2", 12mm (±10%) 3mm <i>Naturals</i> + 9mm <i>Essentials</i>
Weight	0.49 lb./ft ² (±10%)
Standard Sizes	20" W x 44" L x 2" H 20" W x 96" L x 2" H 44" W x 44" L x 2" H 44" W x 96" L x 2" H



Canopy Ceiling Clouds in Wintergreen

Technical

NRC Rating	Testing is pending
Fire Test	ASTM E84, Class 1 Flame spread index: 7 Smoke developed index: 160
Colorfastness	ISO 105-B02, 4
Certifications	100% Mulesing-free pure wool

Details

Lead Time	3 – 6 weeks
Origin	Manufactured and assembled in the US
Warranty	Product: 10 years*

* Conditions apply

Environmental

Indoor Air Quality	VOC less than/equal to 0.5mg/m ³
Recyclable	100%*
Certifications	Oeko-Tex® Standard 100 Certified Product Class II (100% Wool Design Felt)

* Wool is recyclable through participating partners.



Colorways

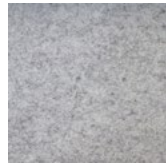
NATURALS



Coconut
CO02



Fog
FO01



Ash
AS08



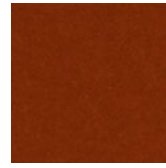
Wintergreen
WI06



Grassland
GR07



Zest
ZE04



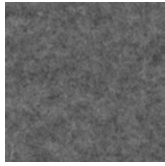
Fox
FO05



Shell
SH10



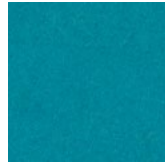
Fawn
FA03



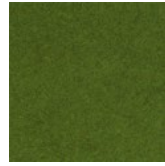
Cliffside
CL15



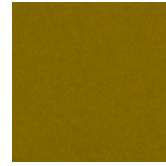
Indigo
IN20



Ocean
OC13



Hedge
HW14



Tapenade
TA11



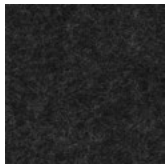
Amaryllis
AM12



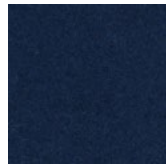
Mulberry
MU17



Thicket
TH09



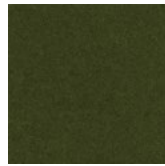
Raven
RA1



Night Sky
NI19



Balsam
BA21



Kelp
KE18

Order samples at acoufelt.com/colorways



Call 800.966.8557 with questions or visit acoufelt.com for more product information, downloads, and colorways.

Sizes

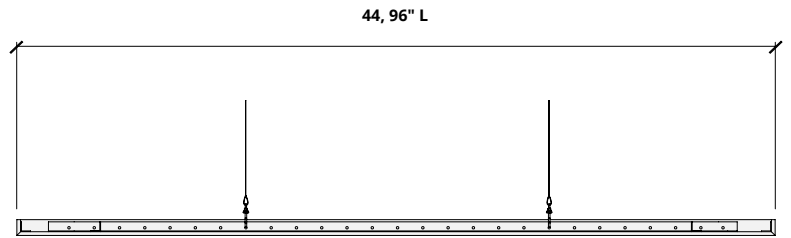
Standard Sizes	20" W x 44" L x 2" H
	20" W x 96" L x 2" H
	44" W x 44" L x 2" H
	44" W x 96" L x 2" H

Thickness	1/2", 12mm (±10%)
------------------	-------------------

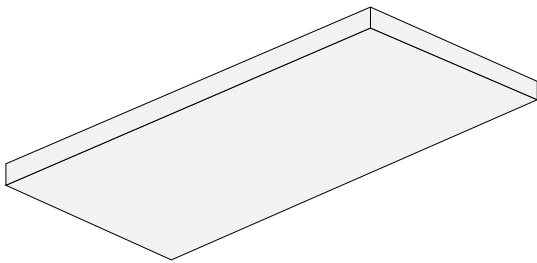
12mm
thickness



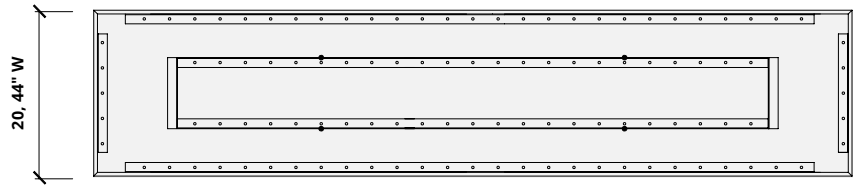
Elevation



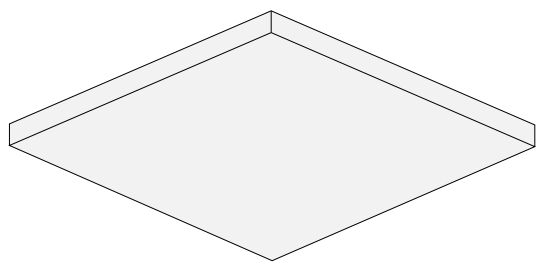
Perspective



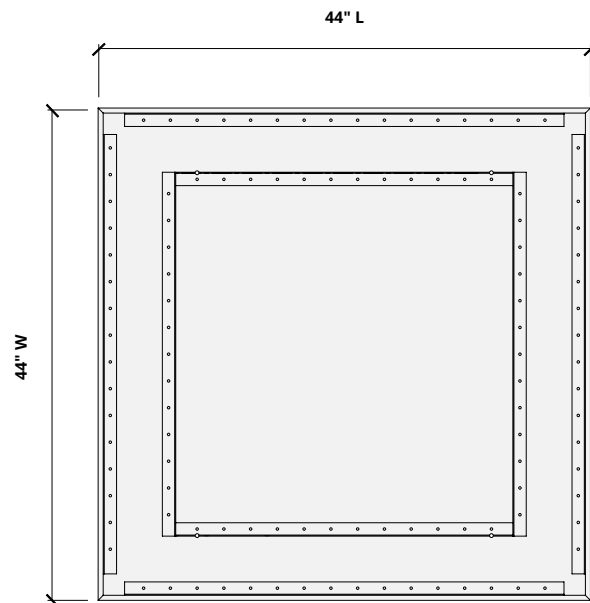
Plan



Perspective

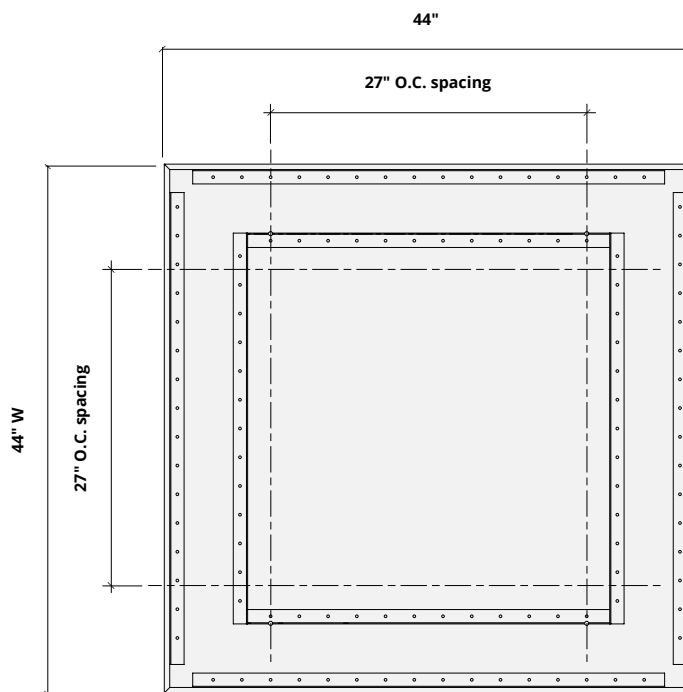
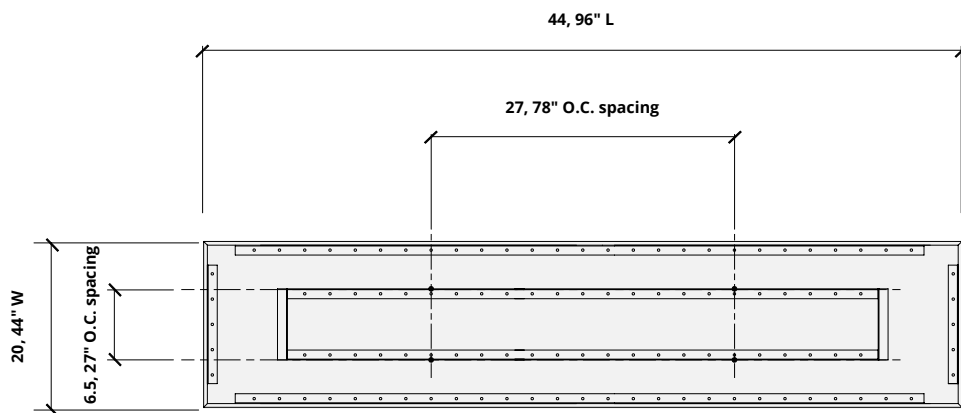


Plan



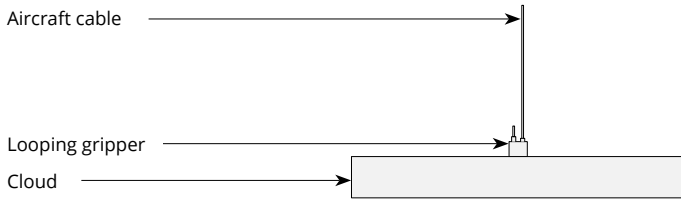
Hardware Spacing

20" W	6.5" on center spacing
44" W	27" on center spacing
44" L	27" on center spacing
96" L	78" on center spacing

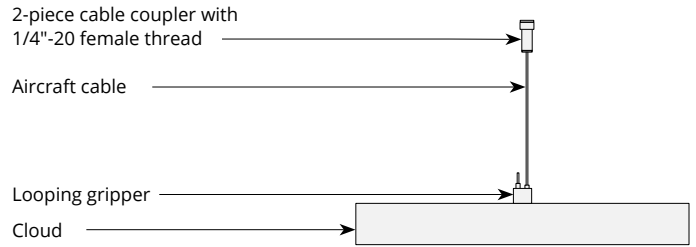


Mounting Methods

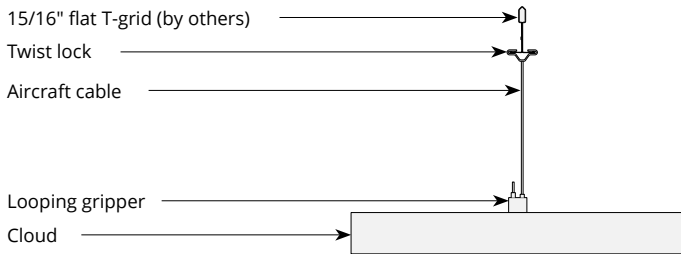
Cable



Cable to deck



Cable to T-grid



Cable to Unistrut

