



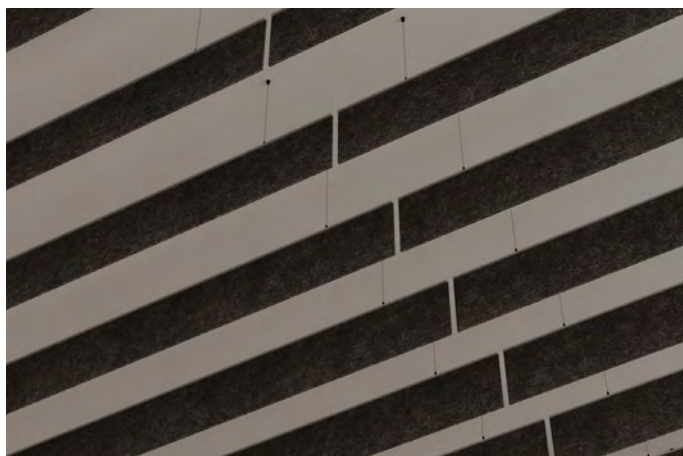
Linear Ceiling Baffles

Essentials Collection

Linear acoustic baffles create a massing of sound-absorbing ceiling surfaces for meeting rooms, cafeterias, common spaces, or bustling offices – anywhere unwanted sound creeps in. Easy to specify and install, Linear ceiling baffles are a great first step in your sound management strategy.

Specifications

Surface	Ceiling
Material	WhisperTex™ polyester felt
Thickness	3/8", 9mm (±10%)
Weight	0.34 lb./ft ² (±10%)
Standard Sizes	Height: 3" up to 20" (1" increments) Depth: 2" up to 12" (1" increments) Length: Range from 12" up to 110" <i>See page 4 for more details. Custom sizes available</i>



Linear Ceiling Baffle in Shale

Technical

NRC Rating	Material: 0.35 Product: Testing is pending
Fire Test	ASTM E84, Class 1 Flame spread index: 7 Smoke developed index: 160
Colorfastness	ISO 105-B02, 4

Details

Lead Time	3 - 6 weeks
Origin	Manufactured and assembled in the US
Warranty	Product: 12 years* Colorfastness: 12 years*

* Conditions apply

Environmental

Recycled Content	Minimum 55%
Indoor Air Quality	VOC less than/equal to 0.5mg/m ³
Recyclable	100%*
Certifications	TVOC Emissions Rate

* PET is recyclable through participating partners.



Sizes

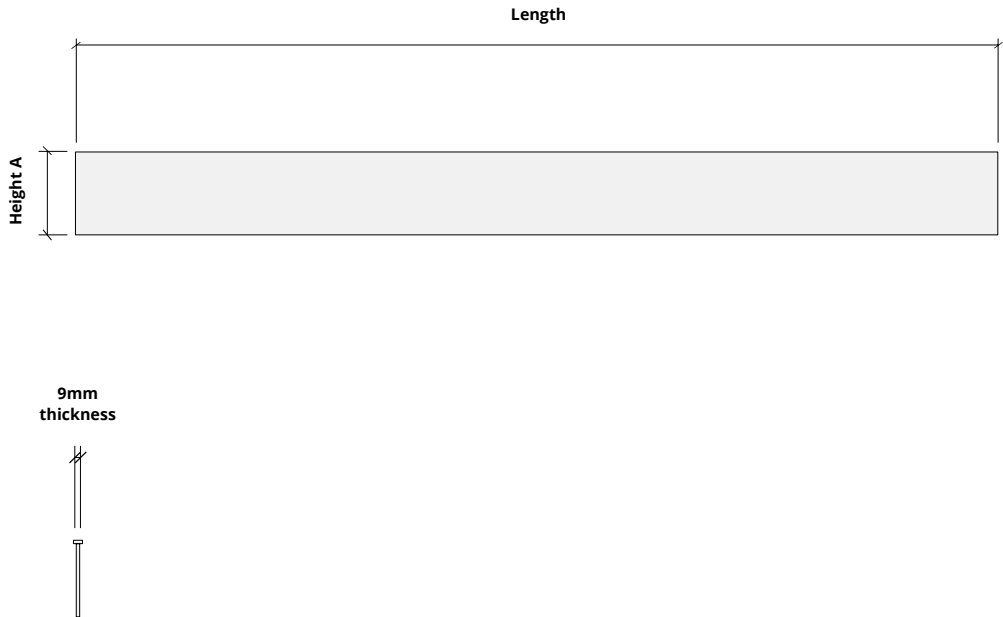
Standard Heights 4" up to 24" (2" increments)
Custom sizes available

Thickness 3/8", 9mm ($\pm 10\%$)

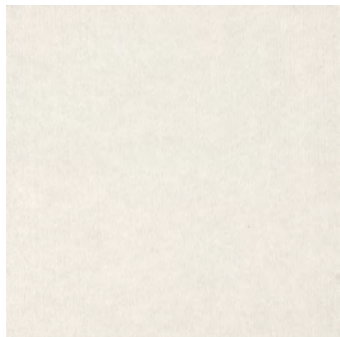
Standard Lengths 12, 18, 24, 30, 36, 42, 48, 54, 60, 66, 72, 78, 84,
 90, 96, 102, 108, 110" L

Custom sizes available

Height
4"
6"
8"
10"
12"
14"
16"
18"
20"
22"
24"



ESSENTIALS



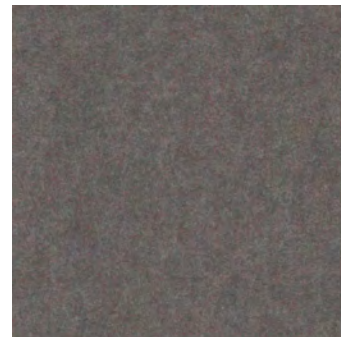
Talc
TA08



Limestone
LI07



Silt
SI06



Shale
SH03



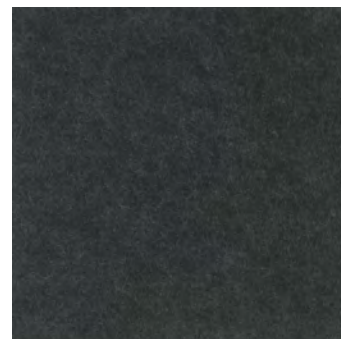
Pumice
PU05



Gypsum
GY04



Jade
JA02

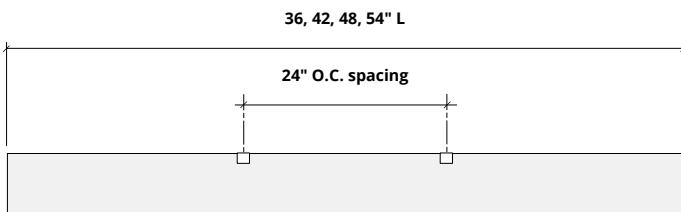
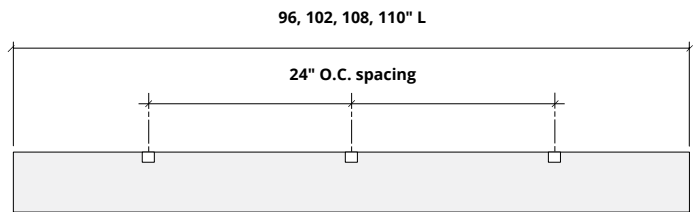
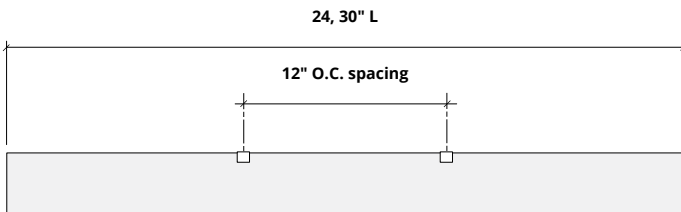
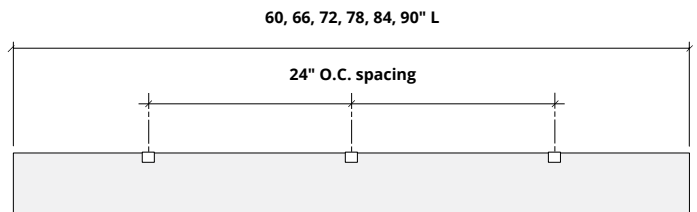
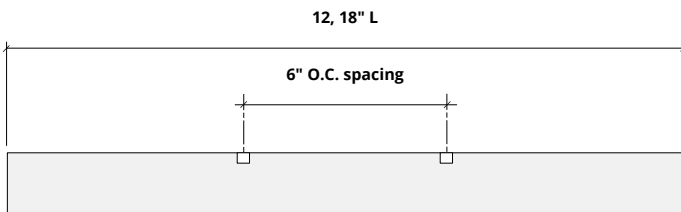


Basalt
BA01

Order samples at acoufelt.com/colorways

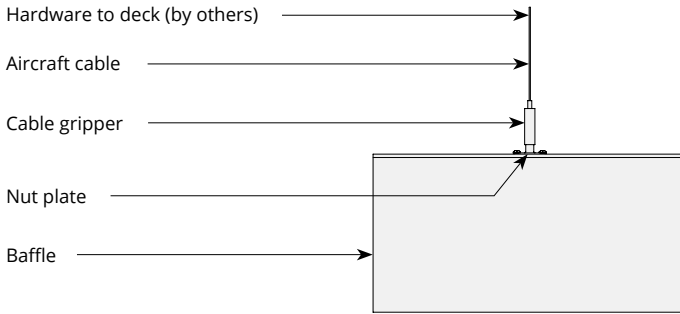
Hardware Spacing

12, 18" L	6" on center spacing
24, 30" L	12" on center spacing
36, 42, 48, 54" L	24" on center spacing
60, 66, 72, 78, 84, 90" L	24" on center spacing
96, 102, 108, 110" L	30" on center spacing

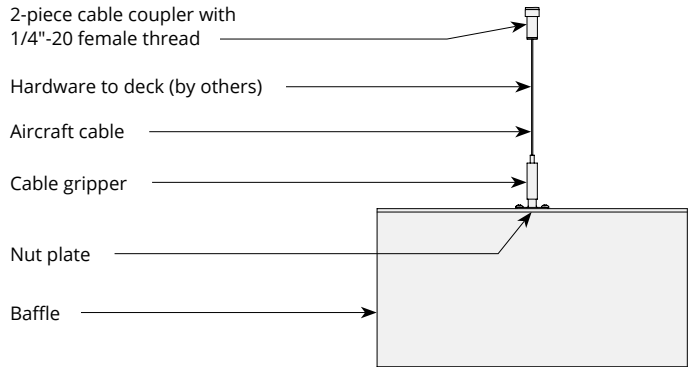


Mounting Methods

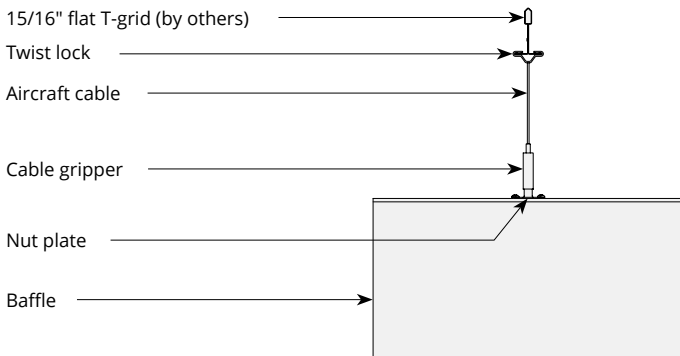
Cable



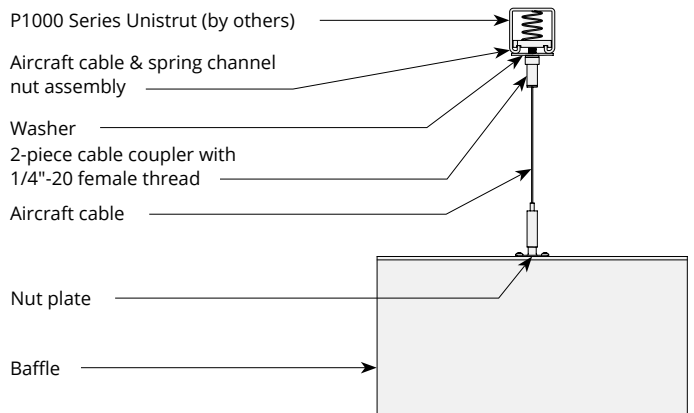
Cable to deck



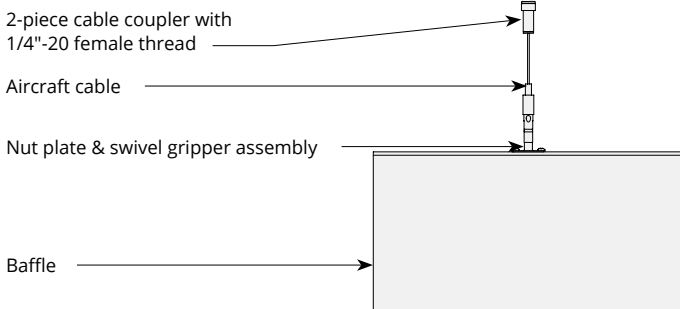
Cable to T-grid



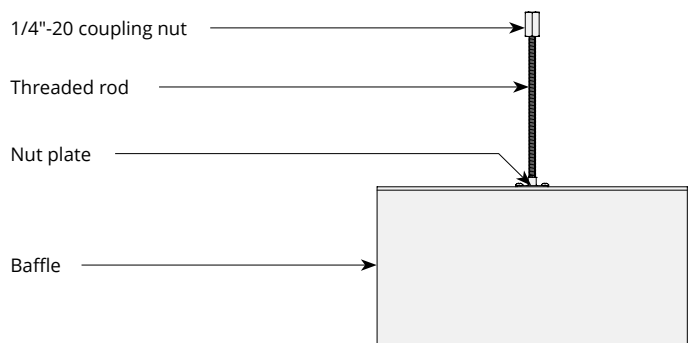
Cable to Unistrut



Swivel cable to deck

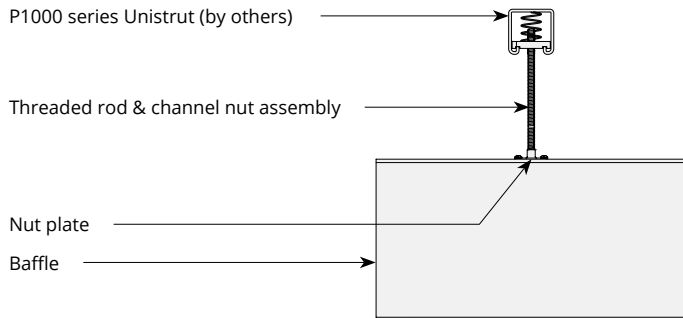


Threaded rod

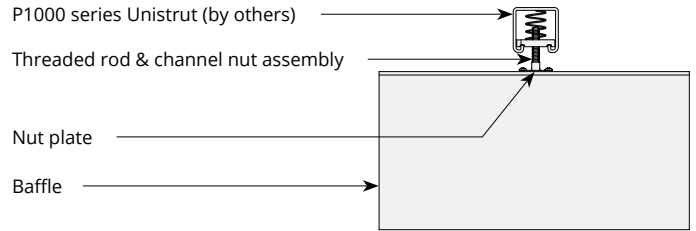


Mounting Methods cont'd.

Threaded rod to Unistrut



Direct to Unistrut



Twist lock to T-grid

