

Creative Cut Wall Screens

Premier Collection

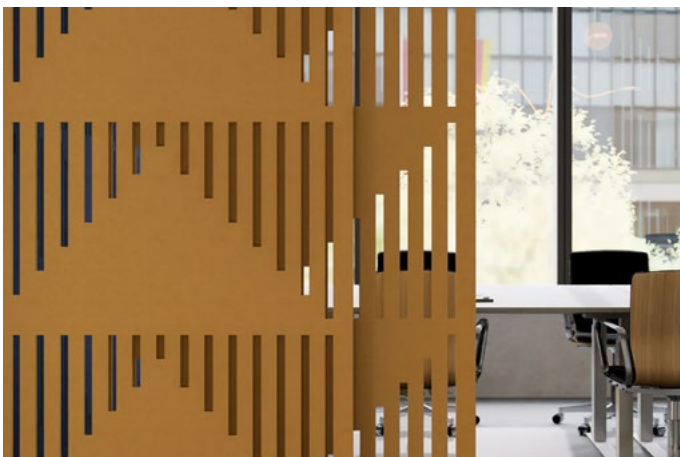
Creative Cut Screens use technical felt to provide space division and acoustic privacy, and still manages to preserve an open feel. Use a variety of patterns and colors to bring dimension to your built environment.

Specifications

| | | |
|-----------------------|--|---------------|
| Surface | Wall | |
| Material | Filasorb™ polyester felt | |
| Thickness | 1/2", 12mm (±10%) 1", 24mm (±10%) | |
| Weight | 12mm, 0.49 lb./ft ² (±10%) 24mm, 0.98 lb./ft ² (±10%) | |
| Standard Sizes | Width | Height |
| | 48" W | 96, 108" H |
| | <i>Custom sizes available</i> | |



Creative Cut Wall Screen with Insignia Pattern in Sencha



Creative Cut Wall Screen with Pyramid Pattern in Turmeric

Technical

| | |
|----------------------|---|
| NRC Rating | 12mm 0.45, no air gap 24mm 0.60, no air gap |
| Fire Test | ASTM E84, Class A Flame spread index: 15 Smoke developed index: 200 |
| Colorfastness | ISO 105-B02, 6-7 |

Details

| | |
|------------------|--|
| Lead Time | 3 - 6 weeks |
| Origin | Manufactured and assembled in the US |
| Warranty | Product: 20 years* Colorfastness: 20 years* |

* Conditions apply

Environmental

| | |
|---------------------------|--|
| Recycled Content | Minimum 60% |
| Energy | Generated using 40% solar energy |
| Indoor Air Quality | VOC less than/equal to 0.5mg/m ³ |
| Recyclable | 100%* |
| Certifications | Environmental Product Declaration Declare Certification - LBC Red List Free (third-party verified) SCS Global Indoor Advantage Gold |

* PET is recyclable through participating partners.



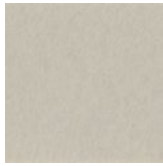
Call **800.966.8557** with questions or visit **acoufelt.com** for more product information, downloads, and colorways.

Colorways

PREMIER



White
WH12



Almond
AL55



Pistachio
PI25



Celery
CE65



Metal
ME03



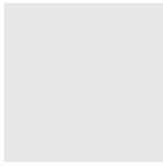
Flamingo
FL61



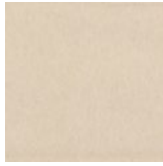
Quartz
QU67



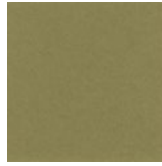
Turmeric
TU60



Platinum
PL04



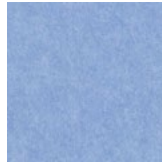
Pearl
PE21



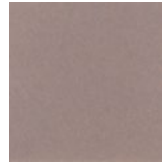
Eucalyptus
EU71



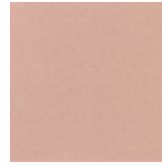
Sencha
SE58



Periwinkle
PE23



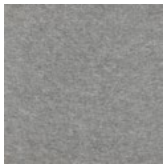
Amethyst
AM69



Valentine
VA70



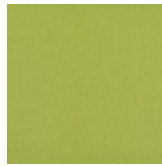
Wheat
WH68



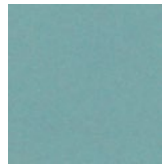
Grey
GR02



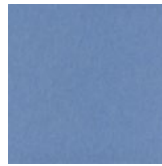
Ivory
IV11



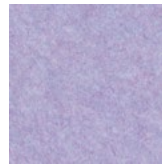
Wasabi
WA29



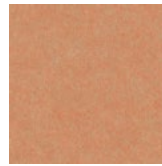
Sea Salt
SE57



Marine
MA15



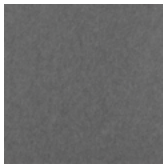
Lilac
LI13



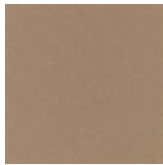
Peach
PE19



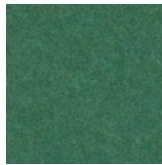
Popcorn
PO26



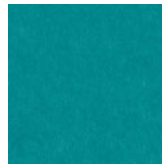
Slate
SL27



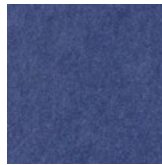
Umber
UM54



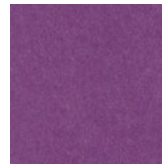
Thistle
TH28



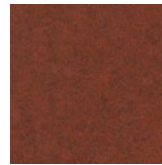
Peacock
PE20



Iris
IR10



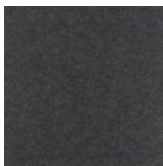
Berry
BE06



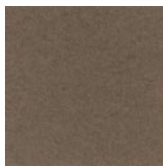
Peppercorn
PE22



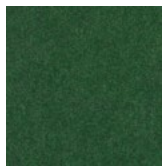
Carrot
CA08



Charcoal
CH01



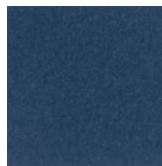
Walnut
WA56



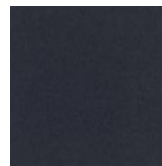
Oregano
OR18



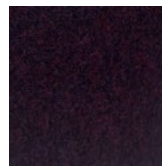
Azure
AZ05



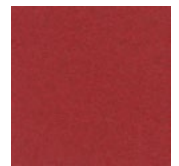
Granite
GR62



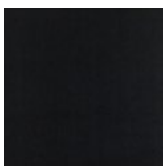
Flint
FL64



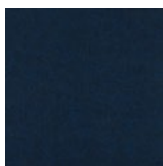
Shiraz
SH63



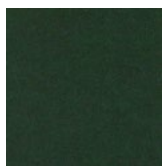
Currant
CU59



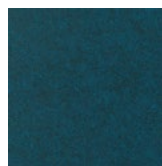
Piano Black
PI24



Midnight
MI16



Kale
KA12



Denim
DE09

Order samples at acoufelt.com/colorways

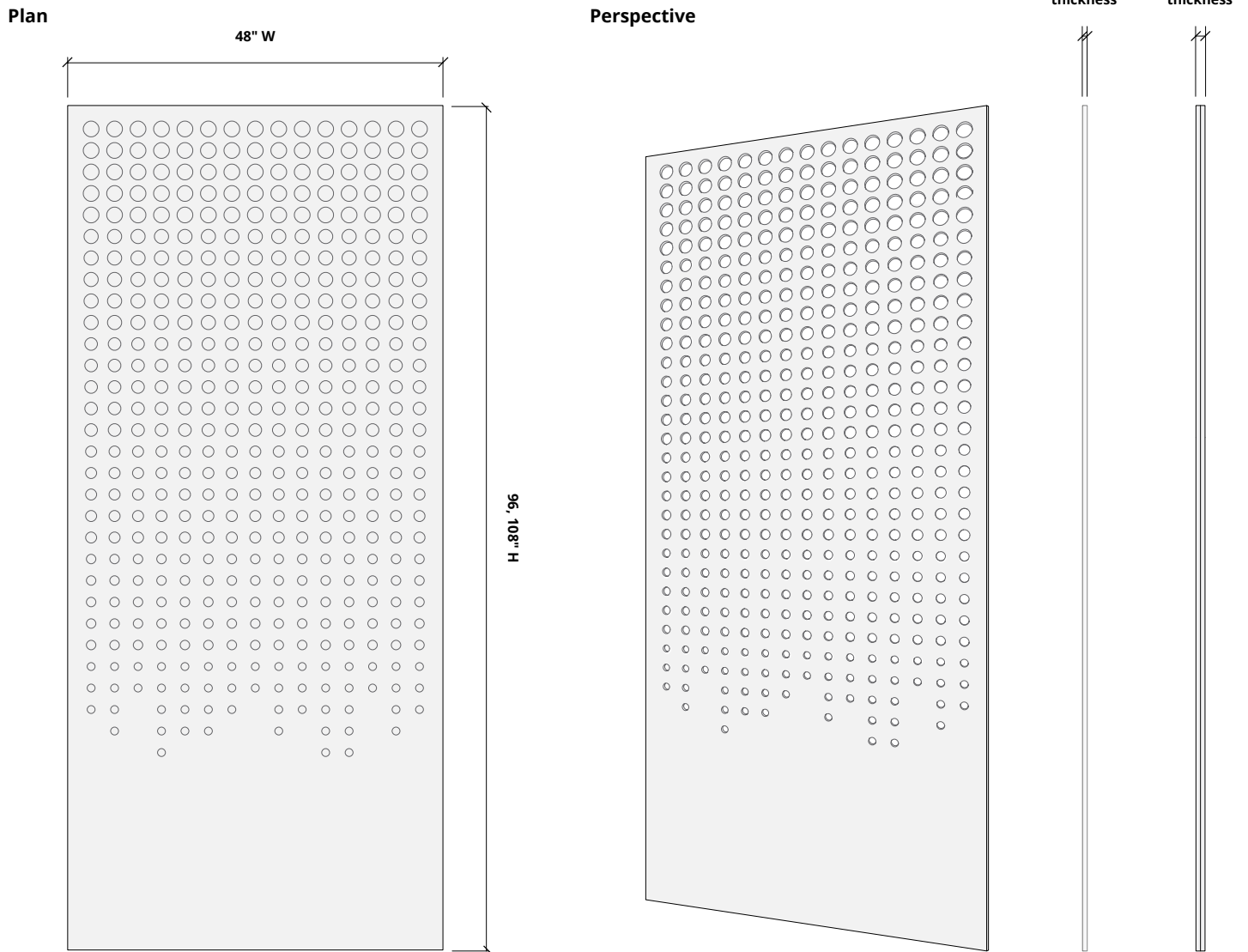


Call 800.966.8557 with questions or visit acoufelt.com for more product information, downloads, and colorways.

Sizes

Standard Sizes 48" W x 96, 108" H
Custom sizes available

Thickness 1/2", 12mm ($\pm 10\%$)
1", 14mm ($\pm 10\%$)



How to Specify

1. Choose Panel Height

2. Choose Panel Pattern

3. Choose Colorway

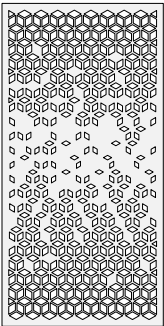
Determine preferred material thickness and height.

1. Choose Panel Height

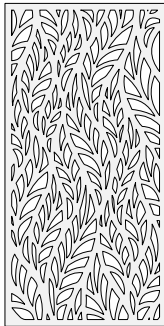
2. Choose Panel Pattern

3. Choose Colorway

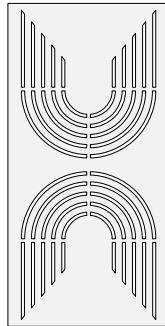
Select desired panel pattern. See recommended layouts for larger designs.



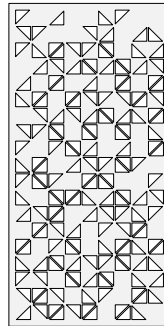
BLIZZARD



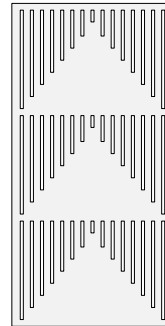
FERN



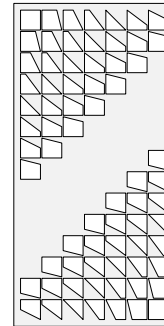
INSIGNIA



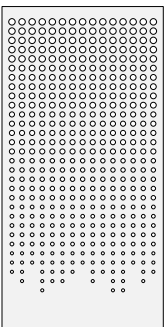
ORIGAMI



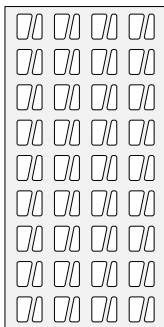
PYRAMID



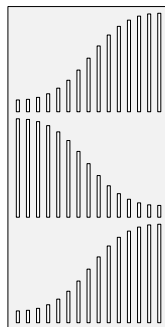
RADAR



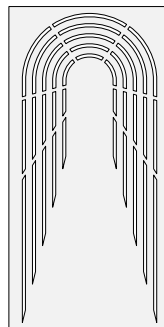
RAIN



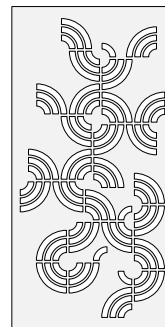
SKYSCRAPER



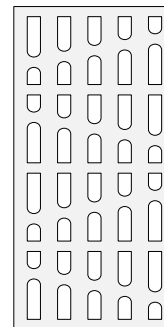
SONAR



TUNNEL



TURNTABLE



WATERFALL

1. Choose Panel Height

2. Choose Panel Pattern

3. Choose Colorway

Select colorways on page 3.

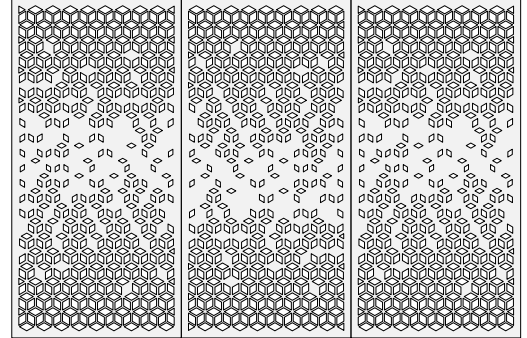
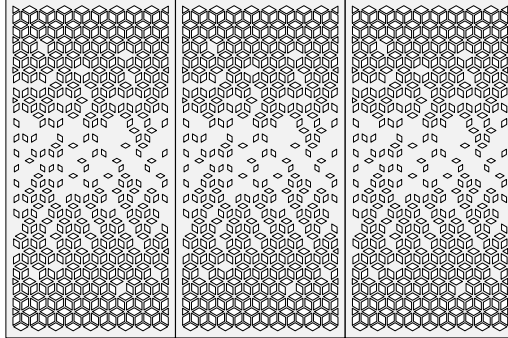
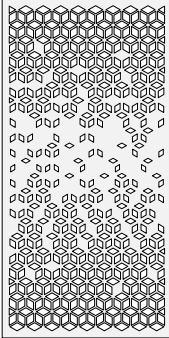


Recommended Layouts

Blizzard: 96" H

Layout 1

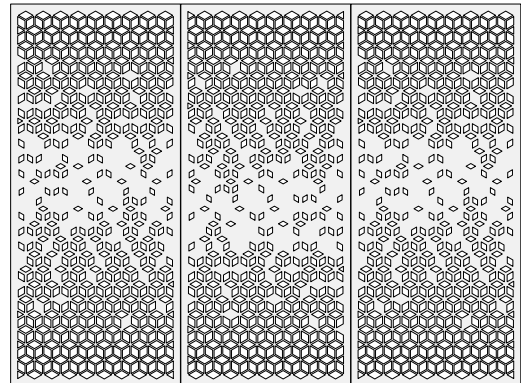
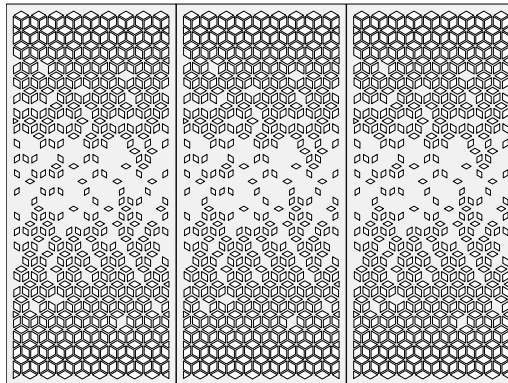
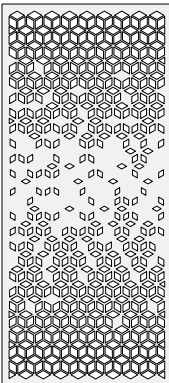
Layout 2*



Blizzard: 108" H

Layout 1

Layout 2*



*Every other panel rotated 180°.

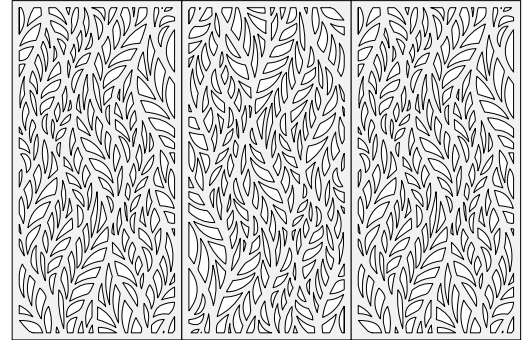
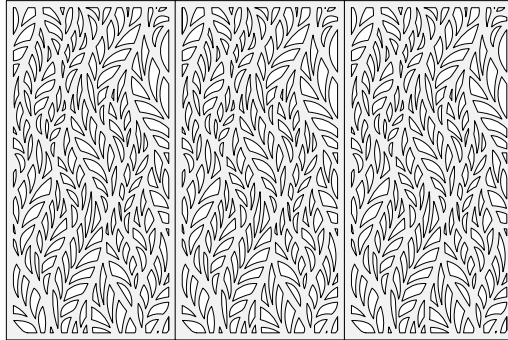
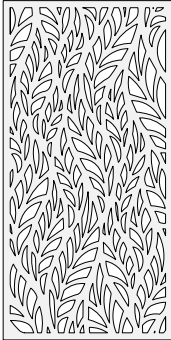


Recommended Layouts

Fern: 96" H

Layout 1

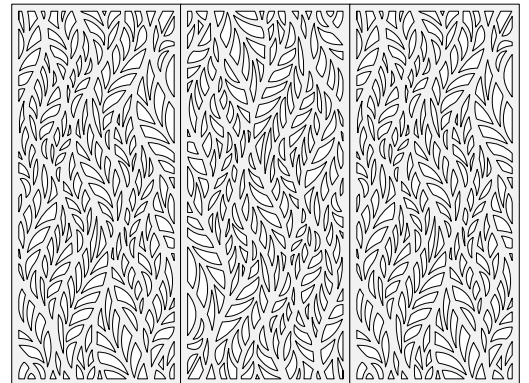
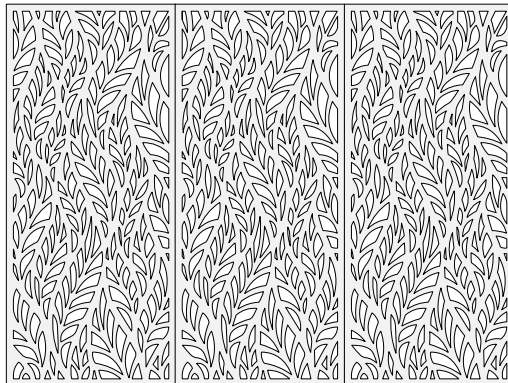
Layout 2*



Fern: 108" H

Layout 1

Layout 2*



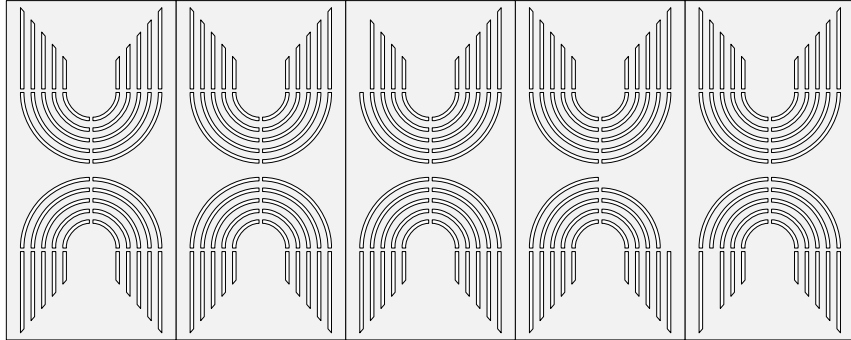
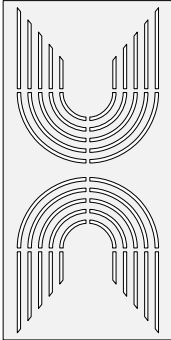
**Every other panel rotated 180°.*



Recommended Layouts

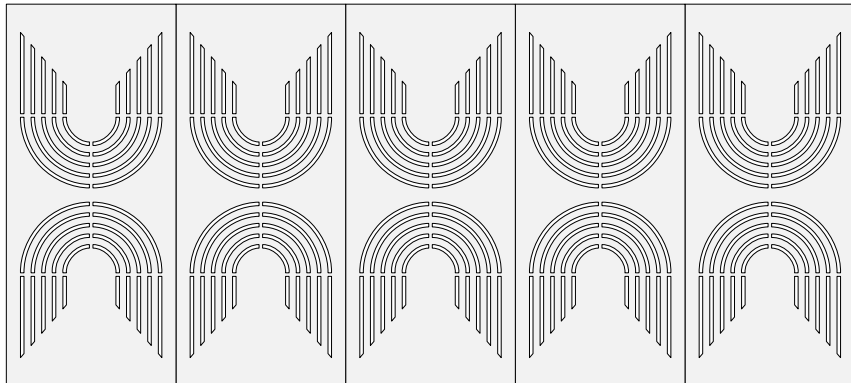
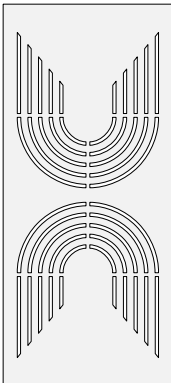
Insignia: 96" H

Layout 1



Insignia: 108" H

Layout 1

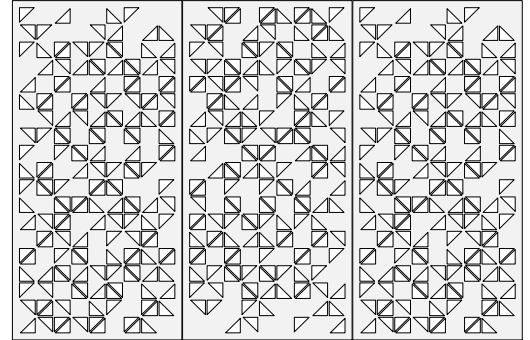
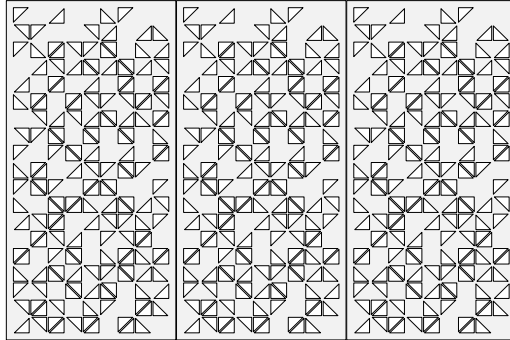
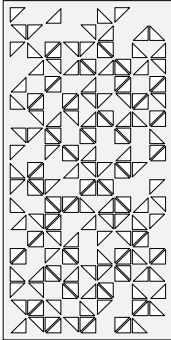


Recommended Layouts

Origami: 96" H

Layout 1

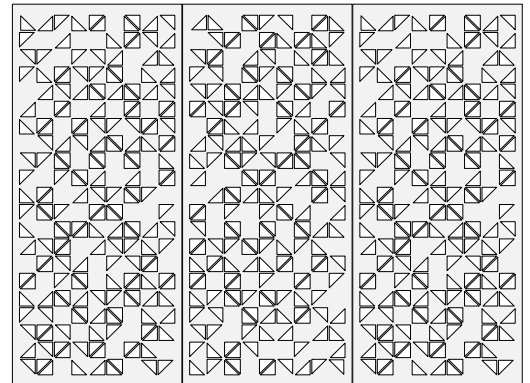
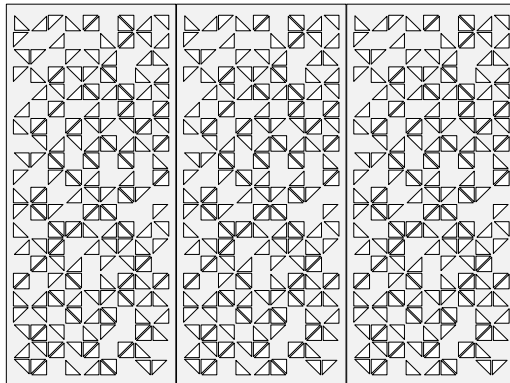
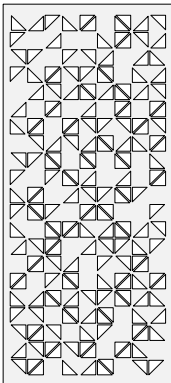
Layout 2*



Origami: 108" H

Layout 1

Layout 2*

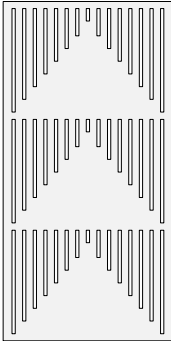


**Every other panel rotated 180°.*

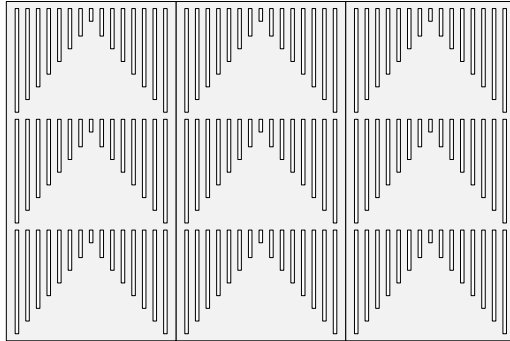


Recommended Layouts

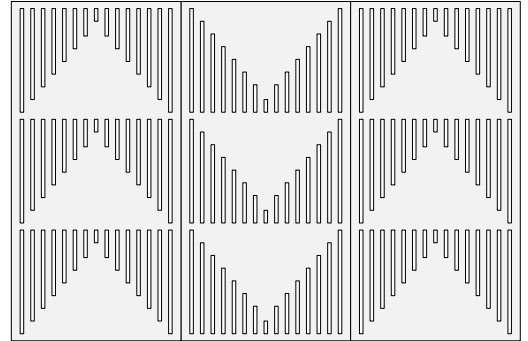
Pyramid: 96" H



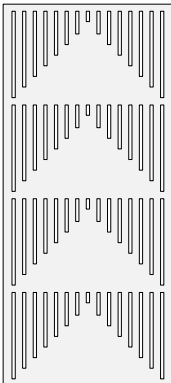
Layout 1



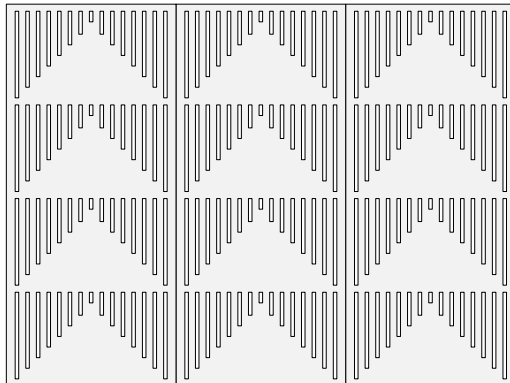
Layout 2*



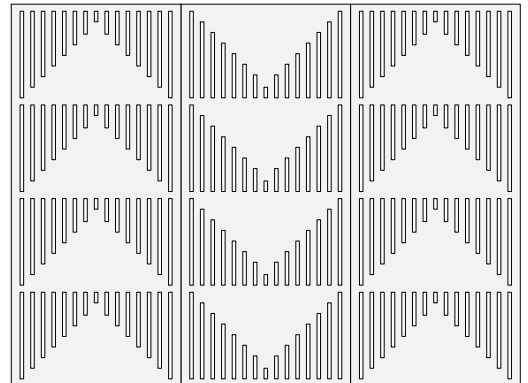
Pyramid: 108" H



Layout 1



Layout 2*



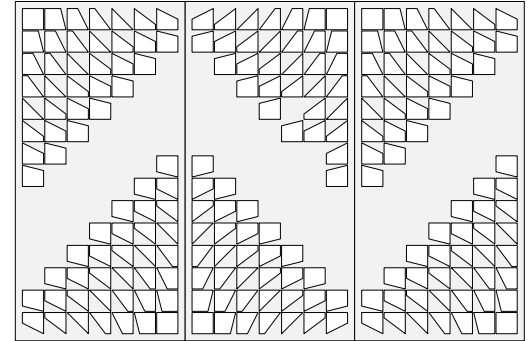
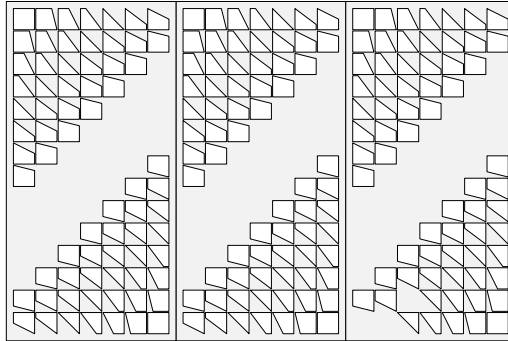
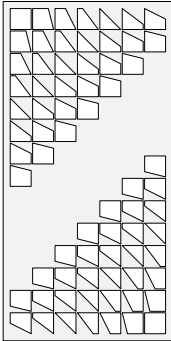
**Every other panel rotated 180°.*

Recommended Layouts

Radar: 96" H

Layout 1

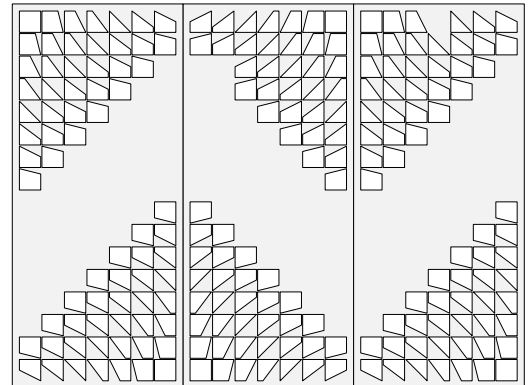
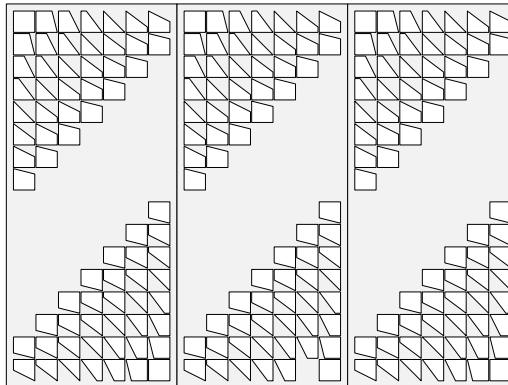
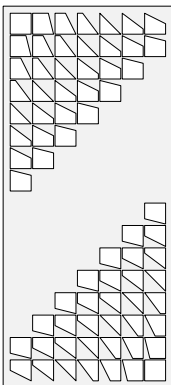
Layout 2



Radar: 108" H

Layout 1

Layout 2

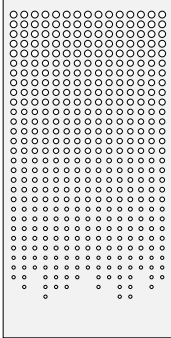


**Every other panel mirrored.*

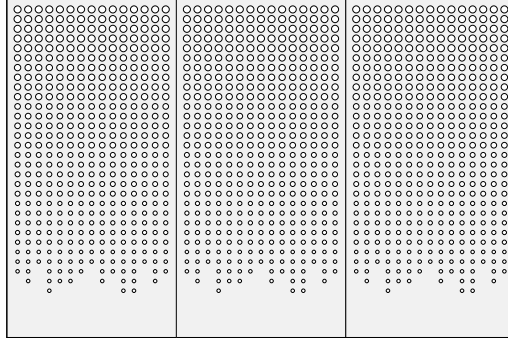


Recommended Layouts

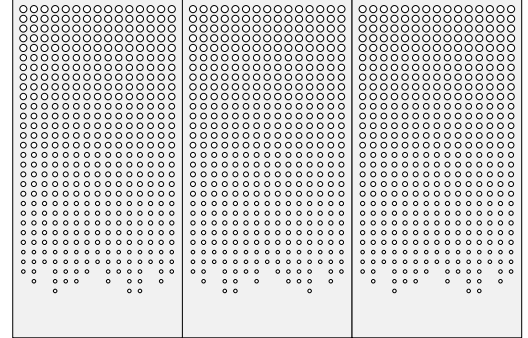
Rain: 96" H



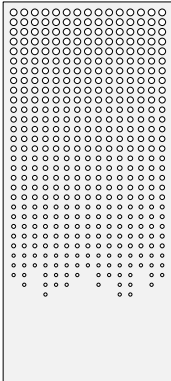
Layout 1



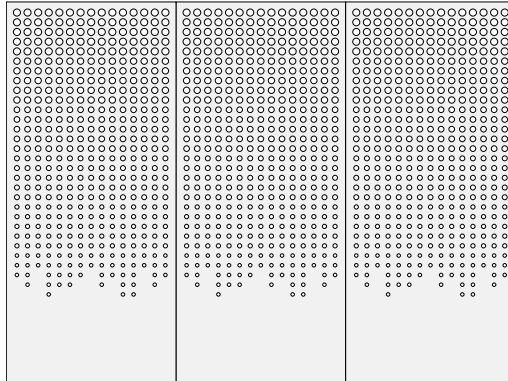
Layout 2*



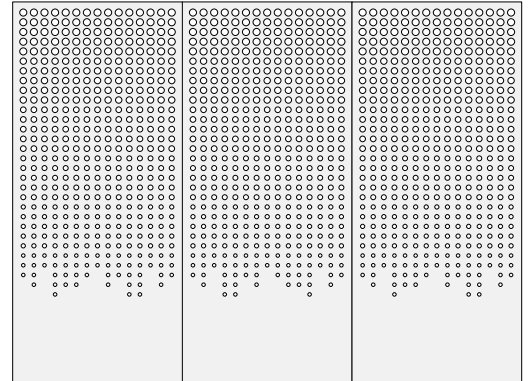
Rain: 108" H



Layout 1



Layout 2*



**Every other panel mirrored.*

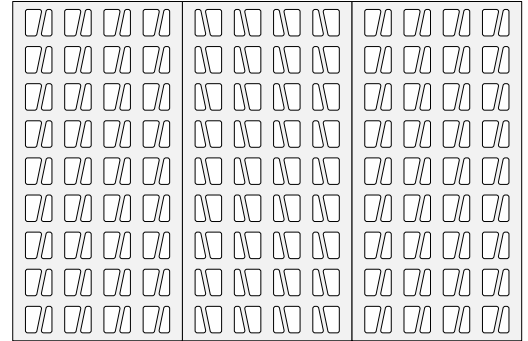
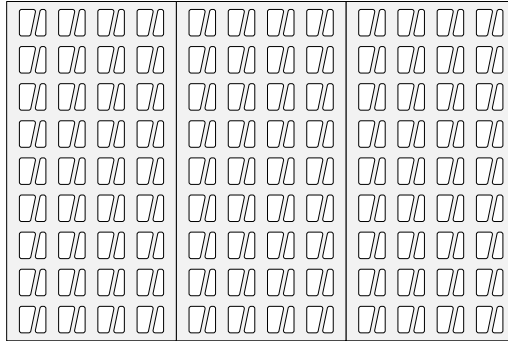
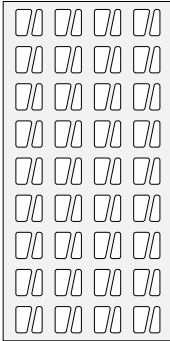


Recommended Layouts

Skyscraper: 96" H

Layout 1

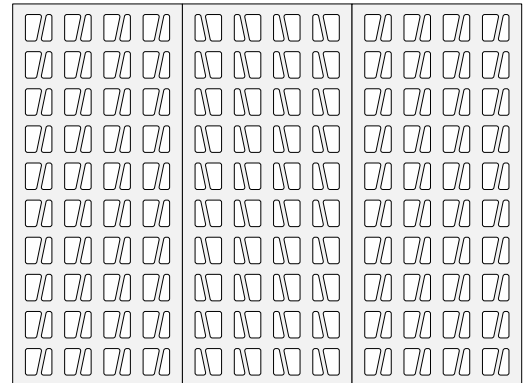
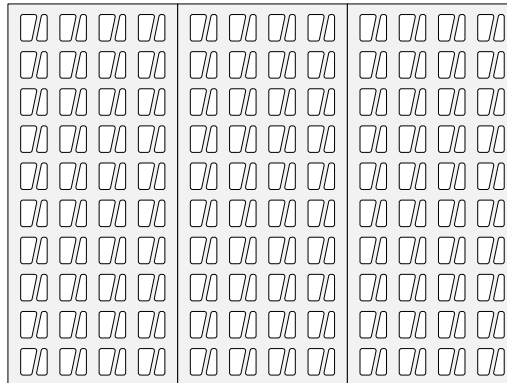
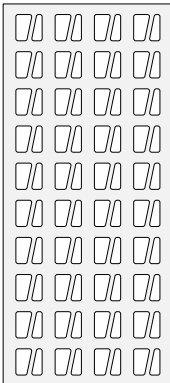
Layout 2*



Skyscraper: 108" H

Layout 1

Layout 2*



* Every other panel mirrored.

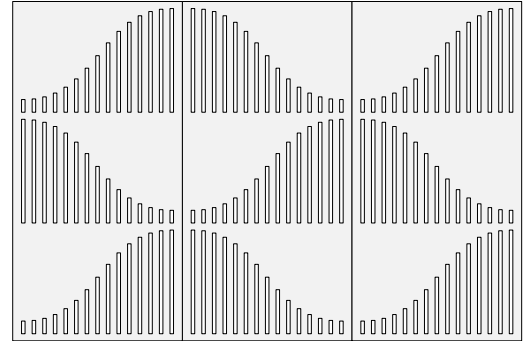
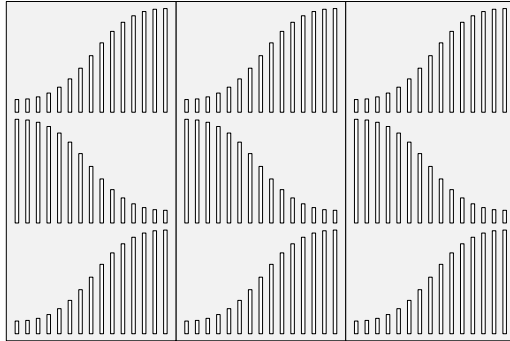
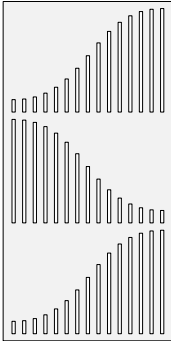


Recommended Layouts

Sonar: 96" H

Layout 1

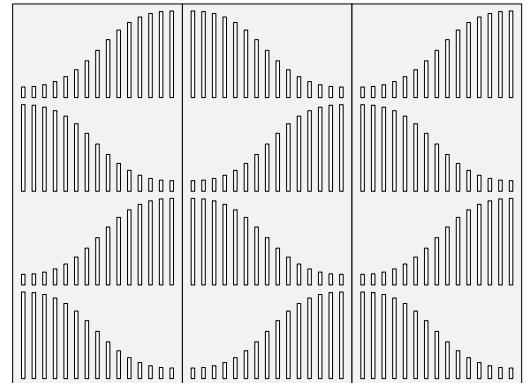
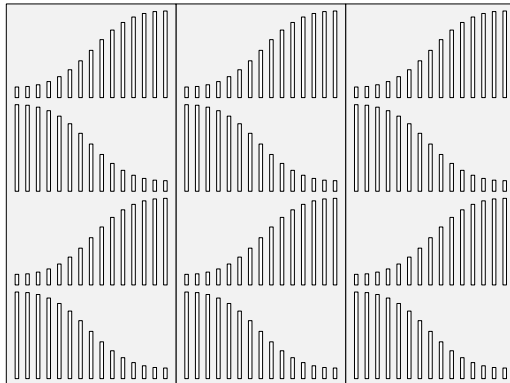
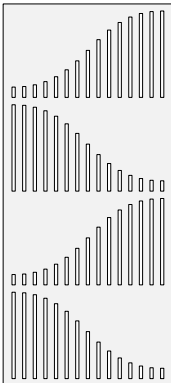
Layout 2*



Sonar: 108" H

Layout 1

Layout 2*



**Every other panel mirrored.*

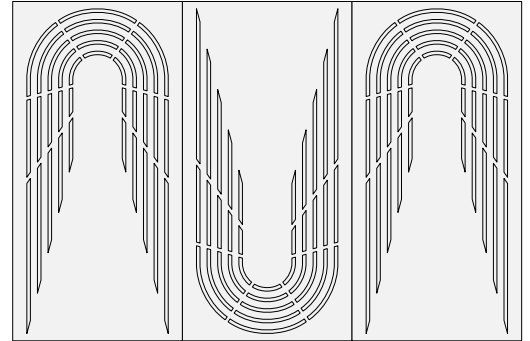
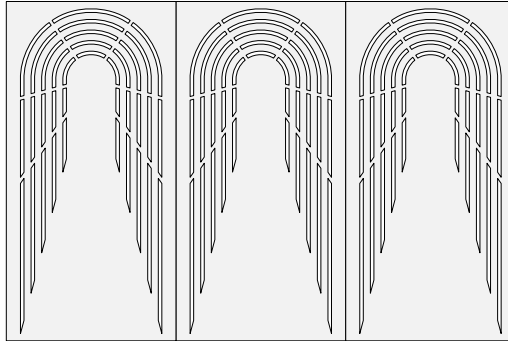
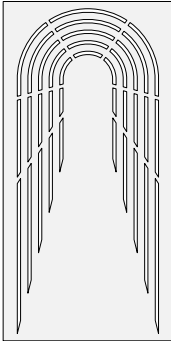


Recommended Layouts

Tunnel: 96" H

Layout 1

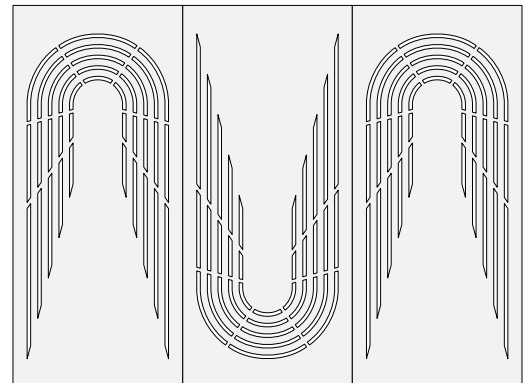
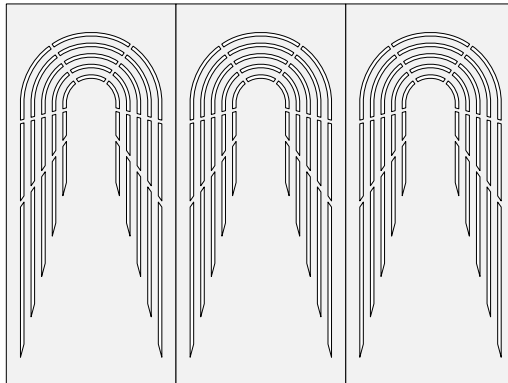
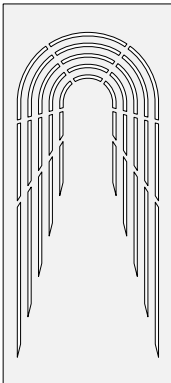
Layout 2*



Tunnel: 108" H

Layout 1

Layout 2



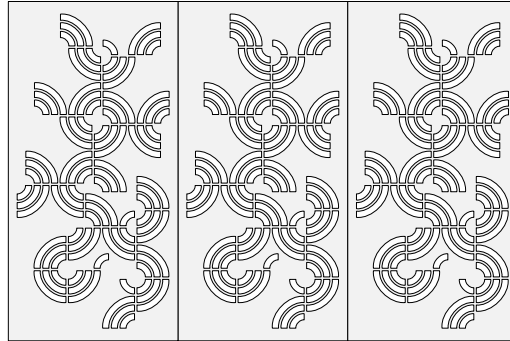
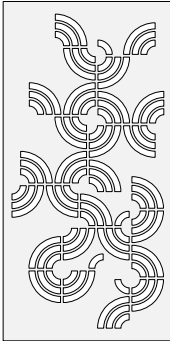
**Every other panel rotated 180°.*



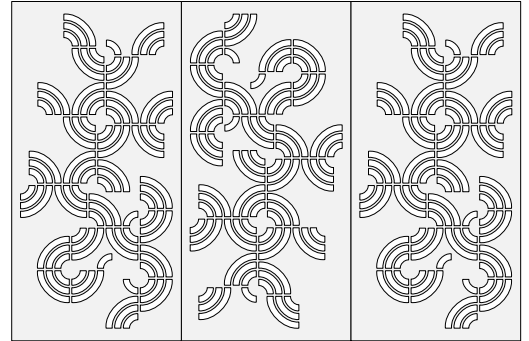
Recommended Layouts

Turntable: 96" H

Layout 1

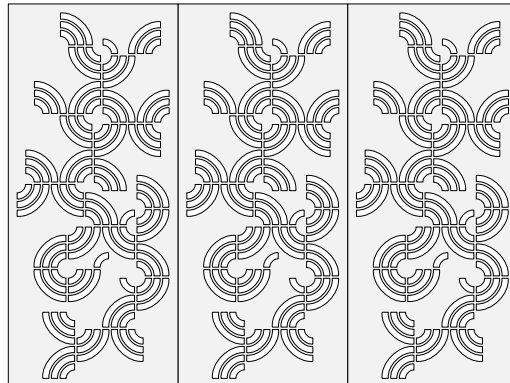
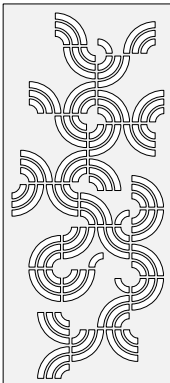


Layout 2*

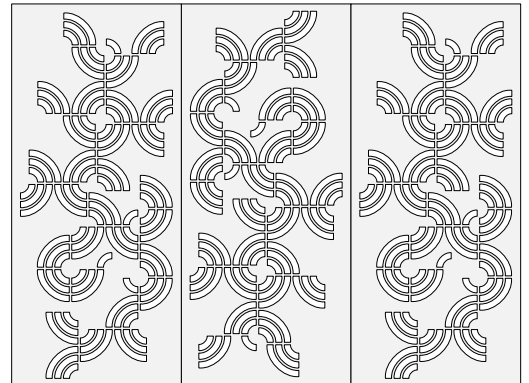


Turntable: 108" H

Layout 1



Layout 2*



** Every other panel mirrored.*

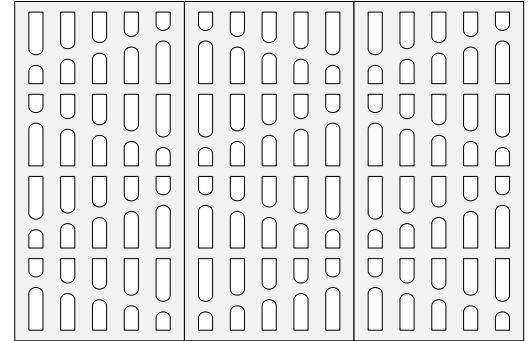
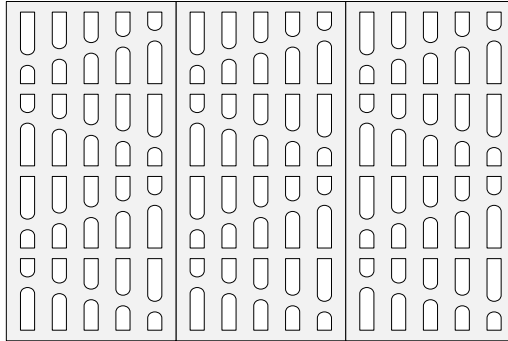
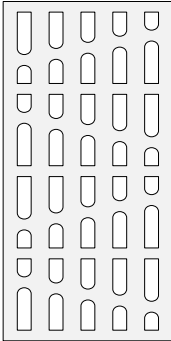


Recommended Layouts

Waterfall: 96" H

Layout 1

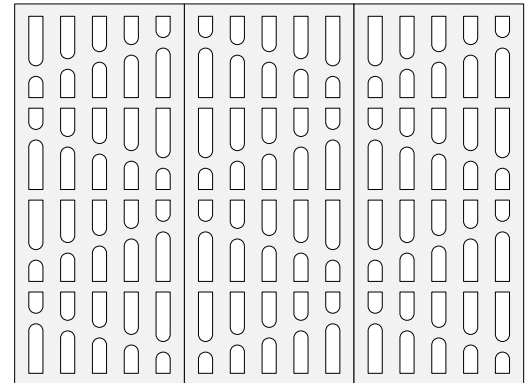
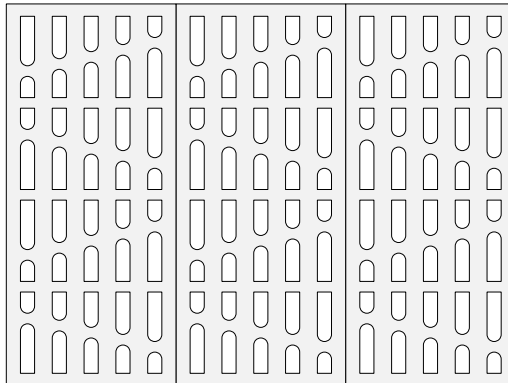
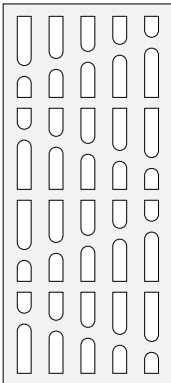
Layout 2*



Waterfall: 108" H

Layout 1

Layout 2*

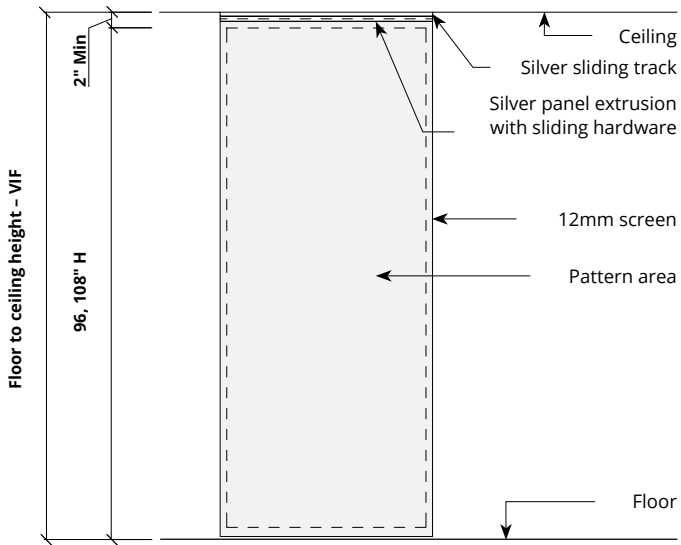


* Every other panel mirrored.

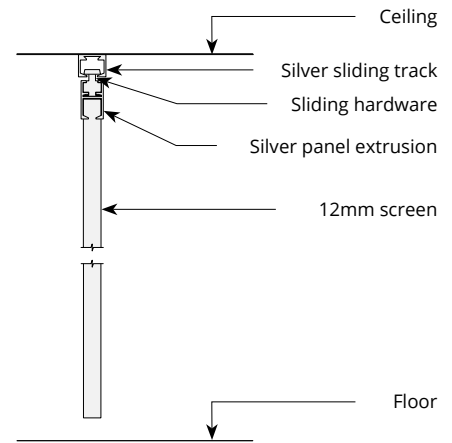


Mounting Methods: Sliding Track

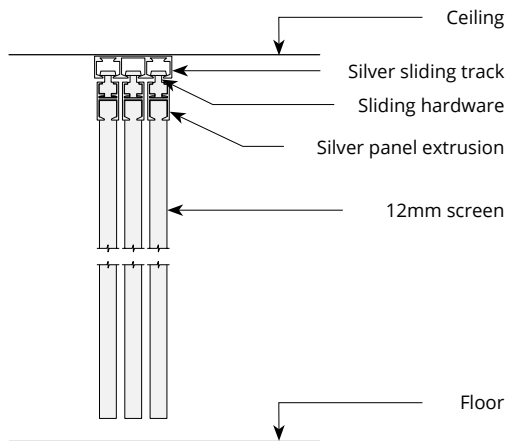
Ceiling mount sliding track elevation



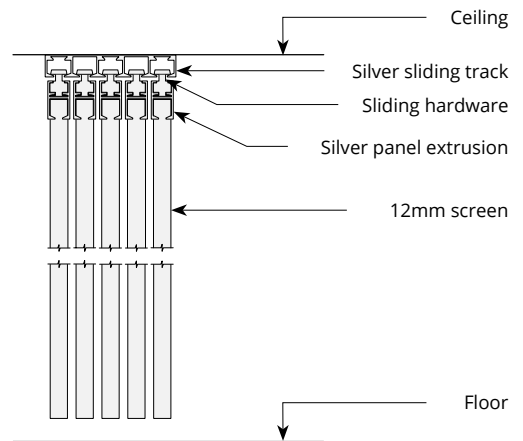
Ceiling mount 1 channel sliding track section



Ceiling mount 3 channel sliding track section



Ceiling mount 5 channel sliding track section

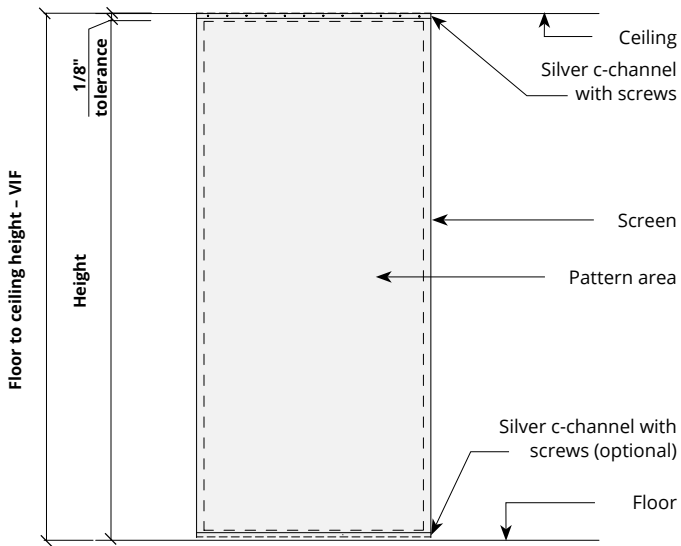


* 2 channel and 4 channel sliding tracks are also available.
Compatible with 12mm panels only.

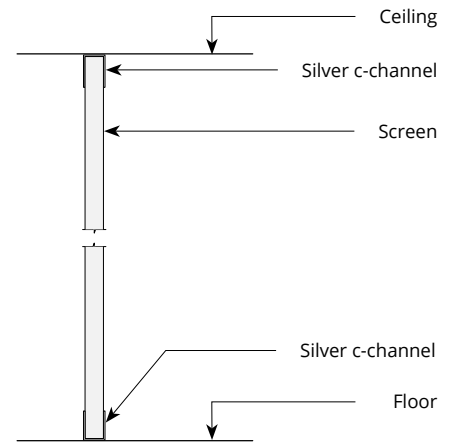


Mounting Methods: C-channel

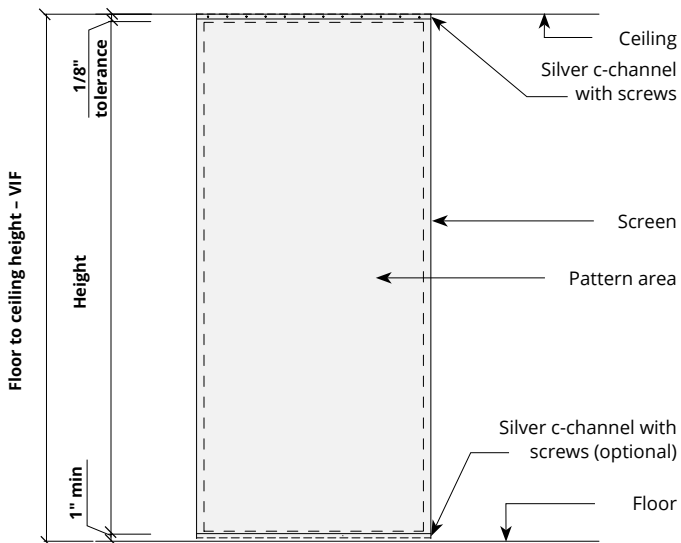
Floor and ceiling mount c-channel elevation



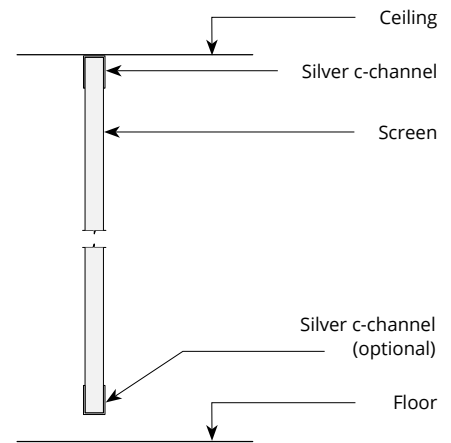
Floor to ceiling mount c-channel section



Ceiling mount c-channel elevation

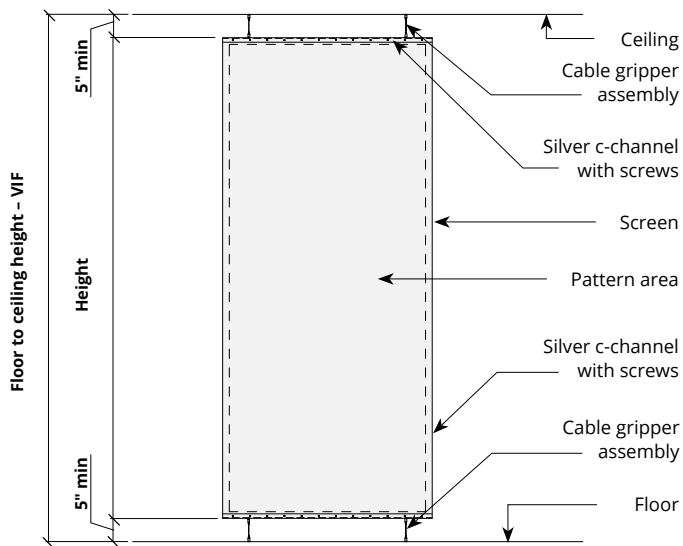


Ceiling mount c-channel section

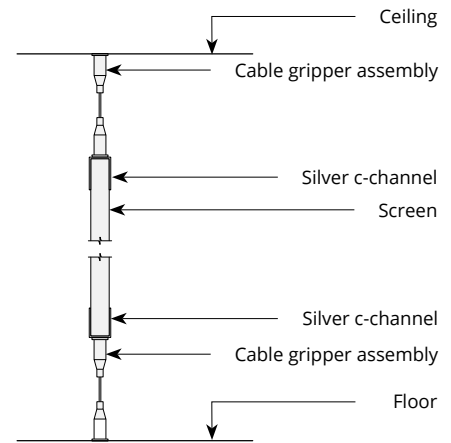


Mounting Methods: Cable

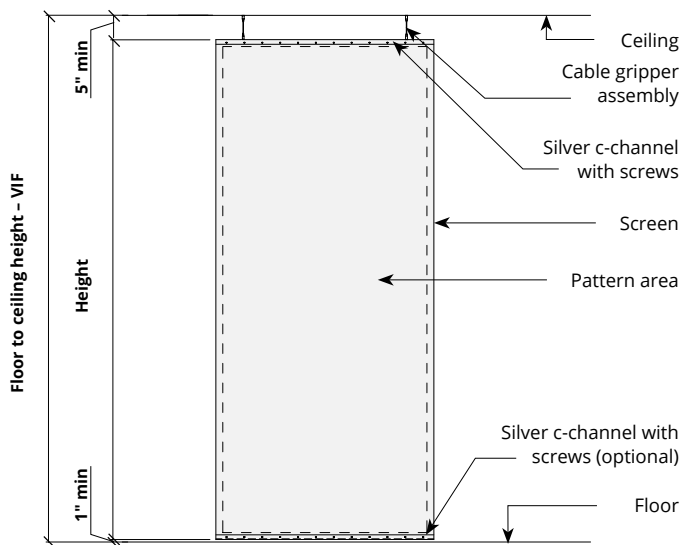
Floor and ceiling mount cable elevation



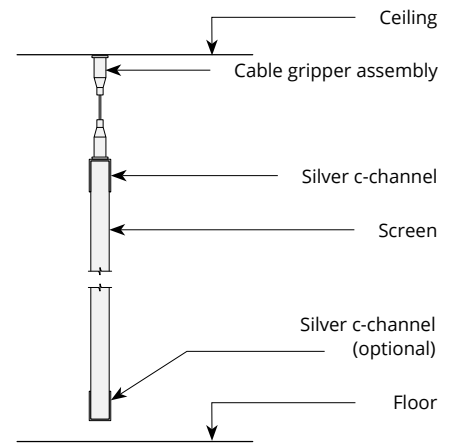
Floor and ceiling mount cable section



Ceiling mount cable with optional c-channel elevation

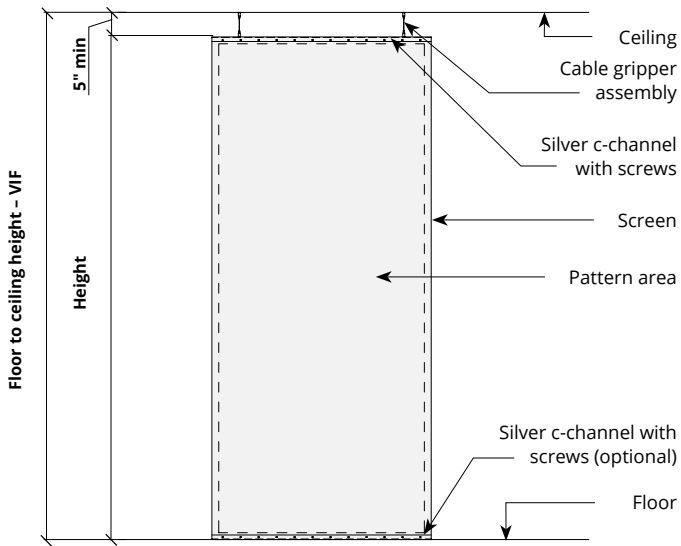


Ceiling mount cable with optional c-channel section

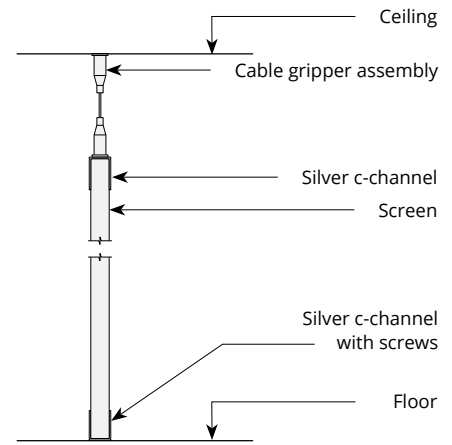


Mounting Methods: Cable cont'd.

Ceiling mount cable with floor mount c-channel elevation

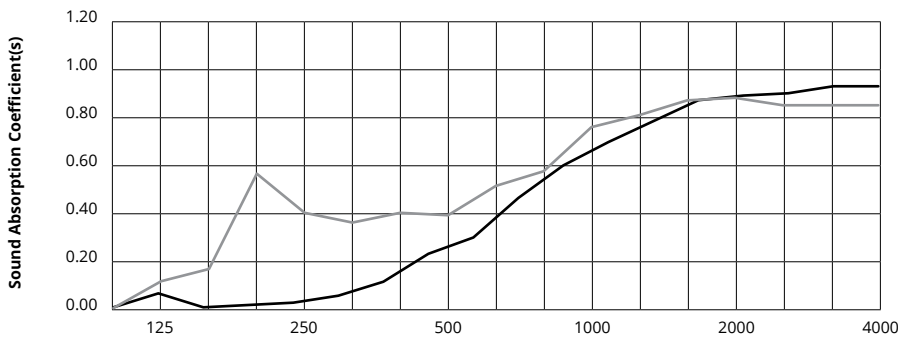


Ceiling mount cable with floor mount c-channel section



Acoustic Performance

| | |
|------------------------|---|
| Test Method | ISO 354-2006 |
| Install Method | No air gaps |
| Mounting Method | Type A |
| Rating Method | ASTM C423-09a |
| Test Results | <p>12mm</p> <p>NRC 0.45</p> <p>SAA 0.43</p> <p>24mm</p> <p>NRC 0.60</p> <p>SAA 0.55</p> |



| | Frequency f (Hz) | 125 | 250 | 500 | 1000 | 2000 | 4000 | NRC |
|--|------------------|------|------|------|------|------|------|------|
| | 12mm | 0.06 | 0.02 | 0.23 | 0.61 | 0.89 | 0.95 | 0.45 |
| | 24mm | 0.02 | 0.57 | 0.41 | 0.58 | 0.87 | 0.85 | 0.60 |

What is a Noise Reduction Coefficient (NRC)?

You'll find the NRC rating in the specifications of all of our products. This acronym stands for Noise Reduction Coefficient, and is expressed as a single number, a rating that describes the degree to which acoustic products can absorb sound.

You can use NRC values to understand the overall performance of our acoustic wall and ceiling products. The higher the NRC, the better the product is at soaking up the sound.

Performance Indices: Noise Reduction Coefficient (NRC) results represent the absorption coefficients measured at the one third octave bands at 125, 250, 500, 1000, 2000 and 4000 Hz rounded to the nearest 0.05. Acoustic testing has been performed according to the methods mentioned above. Customization of installation of the product could alter the results. Sound Absorption Average (SAA) indicates the absorption coefficient average for the twelve one-third octave bands ranging between 200 and 2500 Hz.