



Billow

Ceiling Baffles

Premier Collection

Billow brings refreshing softness to today's hard-edged spaces with curved lines, natural texture, and high sound performance. Multiple sizes, colors, and mounting options give you maximum freedom to precisely create the environment you envision and design a signature pattern to float effortlessly above any space.

Specifications

Surface	Ceiling
Material	FilaSorb™ polyester felt
Thickness	1/2", 12mm (±10%)
Weight	0.49 lb./ft ² (±10%)
Standard Sizes	Height: 4" up to 12" H (1" increments) Width: 14" W Depth: 2, 3" D Length: 48, 96" L



Billow Ceiling Baffles in White

Technical

NRC Rating	1.65
Fire Test	ASTM E84, Class A Flame spread index: 15 Smoke developed index: 200
Colorfastness	ISO 105-B02, 6-7

Details

Lead Time	3 - 6 weeks
Origin	Manufactured and assembled in the US
Warranty	Product: 20 years* Colorfastness: 20 years*

* Conditions apply

Environmental

Recycled Content	Minimum 60%
Energy	Generated using 40% solar energy
Indoor Air Quality	VOC less than/equal to 0.5mg/m ³
Recyclable	100%*
Certifications	Declare Certification - LBC Red List Free (third-party verified) SCS Global Indoor Advantage Gold

* PET is recyclable through participating partners.

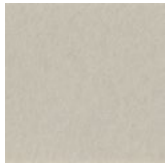


Colorways

PREMIER



White
WH12



Almond
AL55



Pistachio
PI25



Celery
CE65



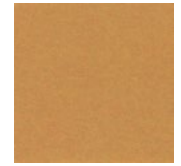
Metal
ME03



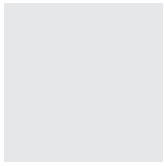
Flamingo
FL61



Quartz
QU67



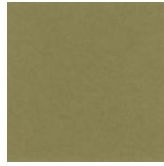
Turmeric
TU60



Platinum
PL04



Pearl
PE21



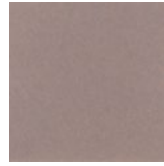
Eucalyptus
EU71



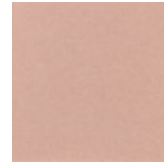
Sencha
SE58



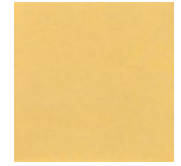
Periwinkle
PE23



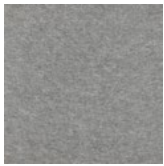
Amethyst
AM69



Valentine
VA70



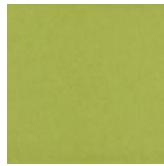
Wheat
WH68



Grey
GR02



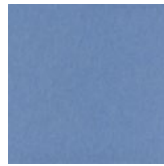
Ivory
IV11



Wasabi
WA29



Sea Salt
SE57



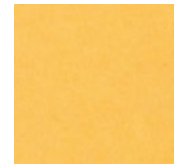
Marine
MA15



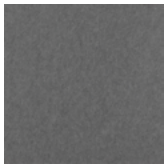
Lilac
LI13



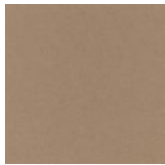
Peach
PE19



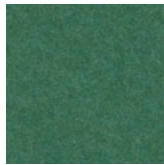
Popcorn
PO26



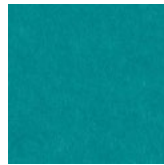
Slate
SL27



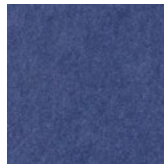
Umber
UM54



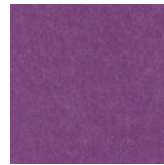
Thistle
TH28



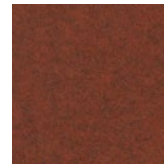
Peacock
PE20



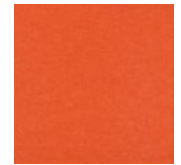
Iris
IR10



Berry
BE06



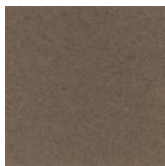
Peppercorn
PE22



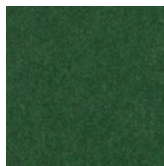
Carrot
CA08



Charcoal
CH01



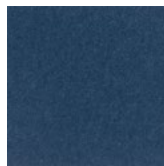
Walnut
WA56



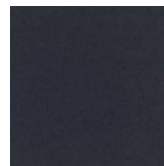
Oregano
OR18



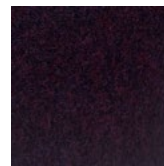
Azure
AZ05



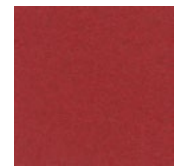
Granite
GR62



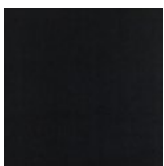
Flint
FL64



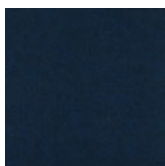
Shiraz
SH63



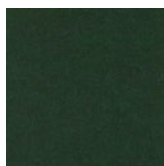
Currant
CU59



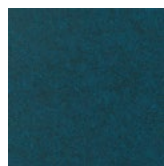
Piano Black
PI24



Midnight
MI16



Kale
KA12



Denim
DE09

Order samples at acoufelt.com/colorways

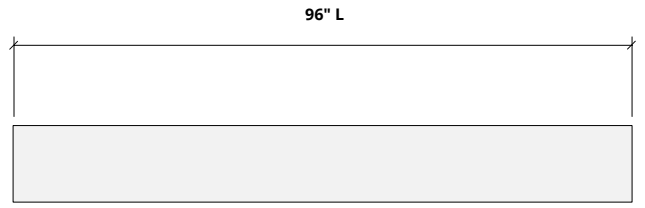
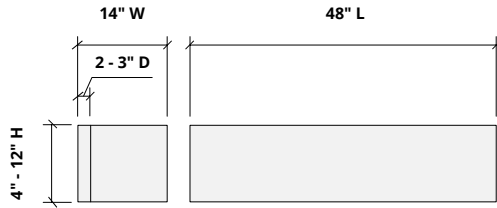


Call 800.966.8557 with questions or visit acoufelt.com for more product information, downloads, and colorways.

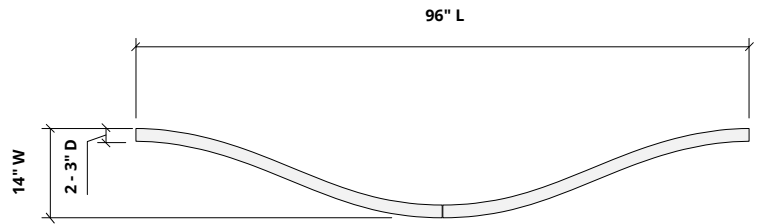
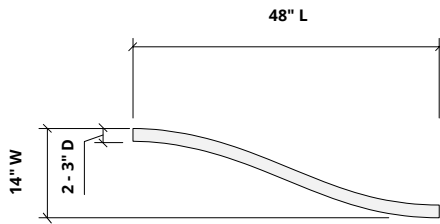
Sizes

Standard Sizes	Height: 4" up to 12" H (1" increments) Width: 14" W Depth: 2, 3" D Length: 48, 96" L
Thickness	1/2", 12mm (±10%)

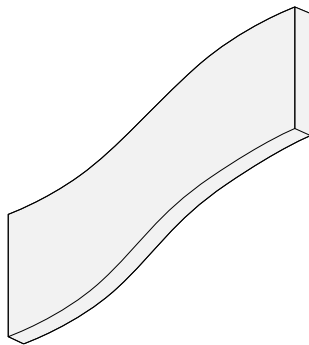
Elevation



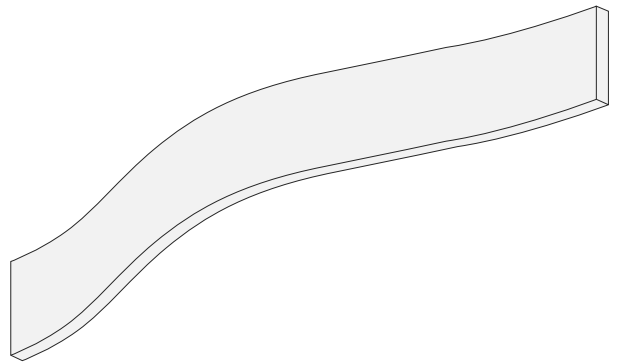
Plan



Perspective



Perspective

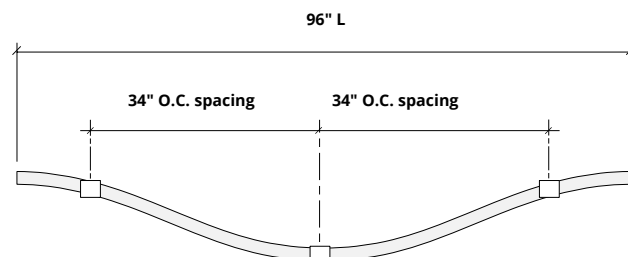
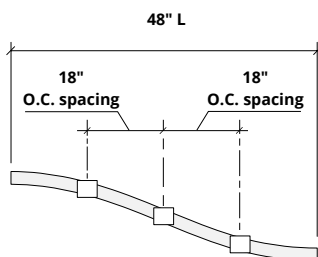
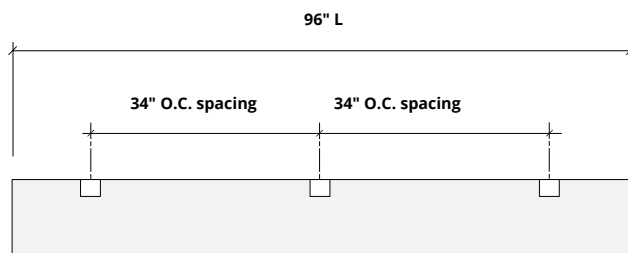
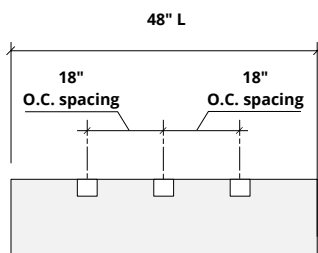


12mm
thickness



Hardware Spacing

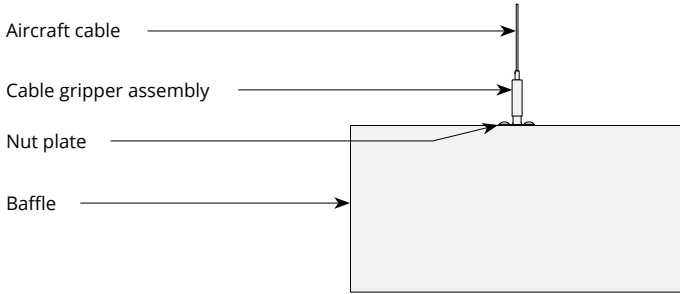
48" L	18" on center spacing
96" L	34" on center spacing



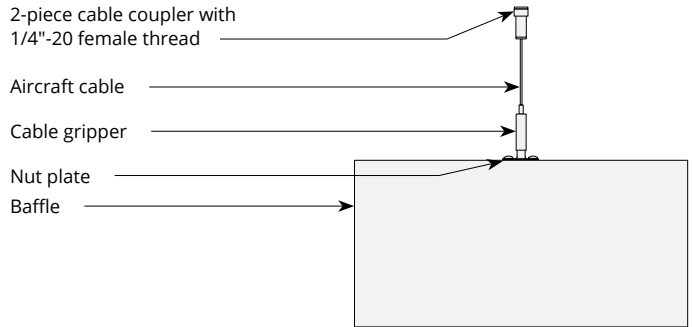
**The number of connection locations may vary depending on mounting methods.*

Mounting Methods

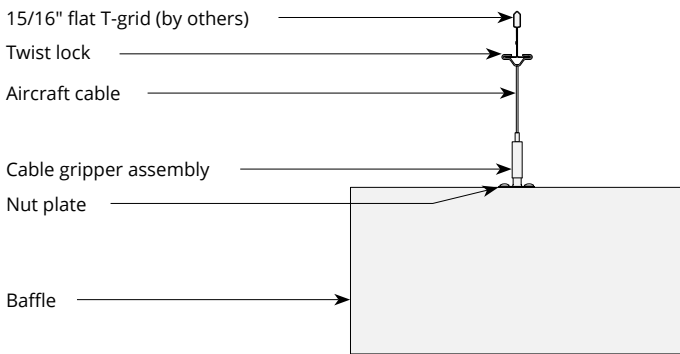
Cable



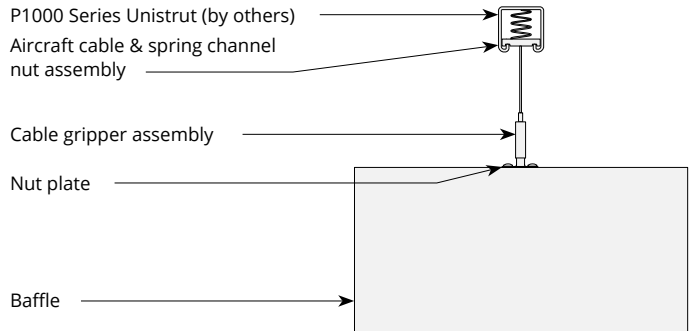
Cable to deck



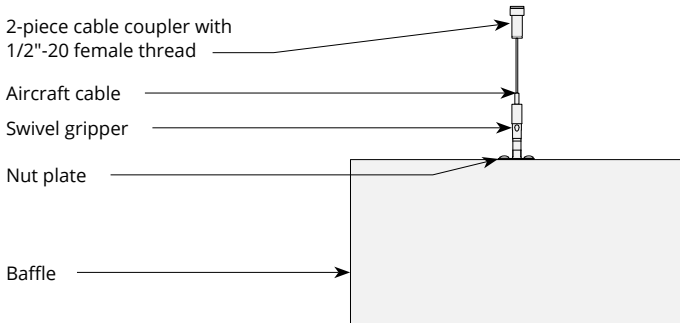
Cable to T-grid



Cable to Unistrut

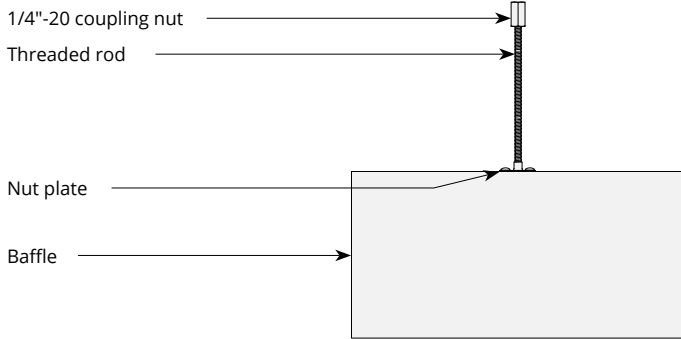


Swivel cable to deck

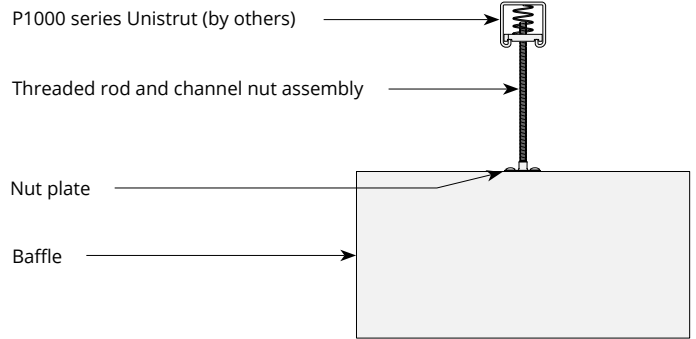


Mounting Methods cont'd.

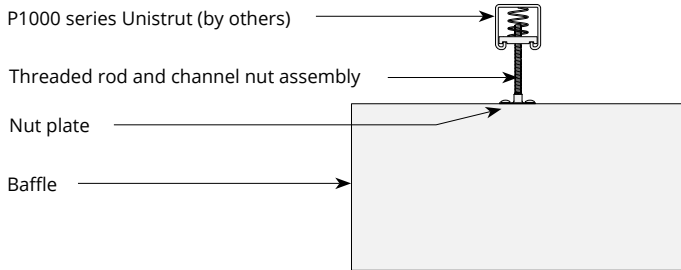
Threaded rod



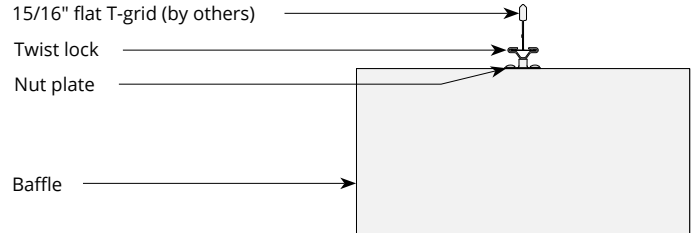
Threaded rod to Unistrut



Direct to Unistrut

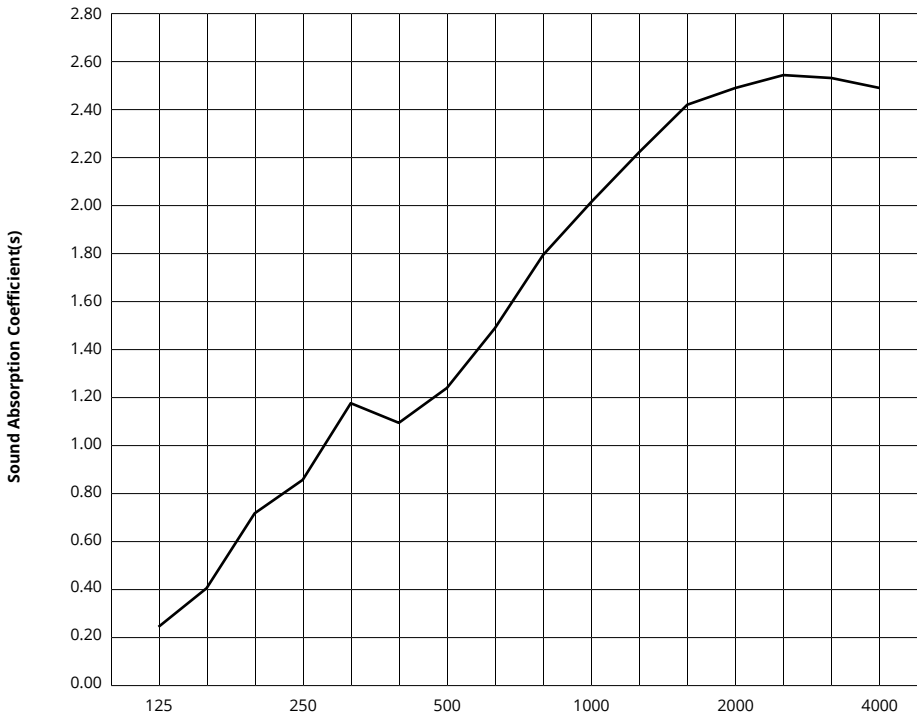


Twist lock to T-grid



Acoustic Performance

Test Method	ASTM E795-16
Install Method	J-600
Rating Method	ASTM C423-17
Mounting Method	Sample tested 5 baffles 110" L x 12" D x 3" T, hanging 600mm from floor and 152mm from each other
Test Results	NRC 1.65 SAA 1.68



Frequency f (Hz)	125	250	500	1000	2000	4000	NRC
12mm	0.26	0.86	1.25	2.02	2.49	2.49	1.65

What is a Noise Reduction Coefficient (NRC)?

You'll find the NRC rating in the specifications of all of our products. This acronym stands for Noise Reduction Coefficient, and is expressed as a single number, a rating that describes the degree to which acoustic products can absorb sound.

You can use NRC values to understand the overall performance of our acoustic wall and ceiling products. The higher the NRC, the better the product is at soaking up the sound.

Performance Indices: Noise Reduction Coefficient (NRC) results represent the absorption coefficients measured at the one third octave bands at 125, 250, 500, 1000, 2000 and 4000 Hz rounded to the nearest 0.05. Acoustic testing has been performed according to the methods mentioned above. Customization of installation of the product could alter the results. Sound Absorption Average (SAA) indicates the absorption coefficient average for the twelve one-third octave bands ranging between 200 and 2500 Hz.