

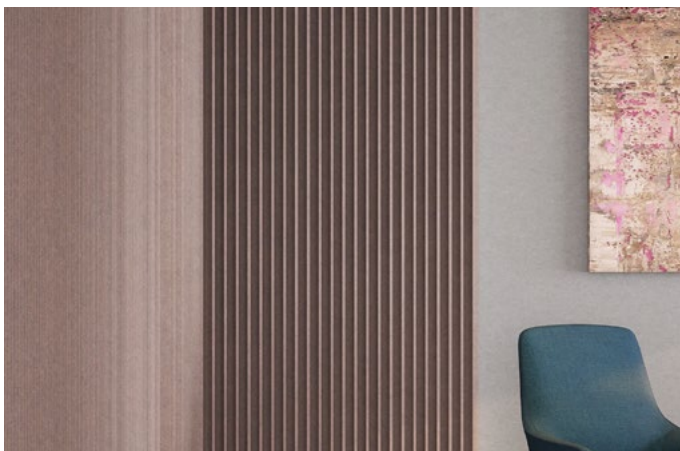
Raised Wall Panels

Premier Collection

Weave dimension, warmth, and exceptional sound management into your environment. The Raised family includes four depths—apply a single size for subtle texture or blend modules of varying depths for a more interesting visual rhythm. Go refined with a monochromatic approach or add a touch of character with a second-color reveal for the backing.

Specifications

Surface	Wall
Material	FilaSorb™ polyester felt
Thickness	1/2", 12mm (±10%) 1", 24mm (±10%)
Weight	12mm, 0.49 lb./ft ² (±10%) 24mm, 0.98 lb./ft ² (±10%)
Standard Sizes	Width: 12, 24, 48" W Height: 96, 108, 110" H Slat depth: 1, 2, 4, 6" D



Raised Wall Panel in Amethyst

Technical

NRC Rating	12mm 0.45, no air gap 0.54, 12mm air gap 0.64, 20mm air gap 24mm 0.60, no air gap
Fire Test	ASTM E84, Class A Flame spread index: 15 Smoke developed index: 200
Colorfastness	ISO 105-B02, 6-7

Details

Lead Time	3 – 6 weeks
Origin	Manufactured and assembled in the US
Warranty	Product: 20 years* Colorfastness: 20 years*

* Conditions apply

Environmental

Recycled Content	Minimum 60%
Energy	Generated using 40% solar energy
Indoor Air Quality	VOC less than/equal to 0.5mg/m ³
Recyclable	100%*
Certifications	Declare Certification - LBC Red List Free (third-party verified) SCS Global Indoor Advantage Gold

* PET is recyclable through participating partners.

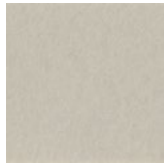


Colorways

PREMIER



White
WH12



Almond
AL55



Pistachio
PI25



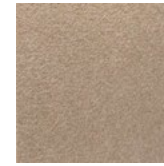
Celery
CE65



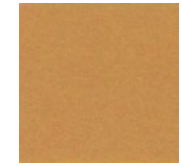
Metal
ME03



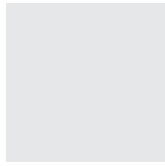
Flamingo
FL61



Quartz
QU67



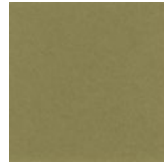
Turmeric
TU60



Platinum
PL04



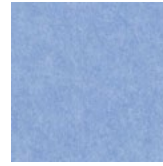
Pearl
PE21



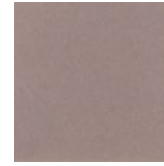
Eucalyptus
EU71



Sencha
SE58



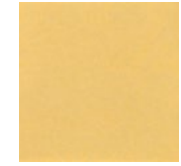
Periwinkle
PE23



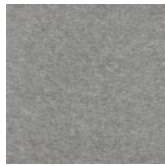
Amethyst
AM69



Valentine
VA70



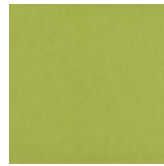
Wheat
WH68



Grey
GR02



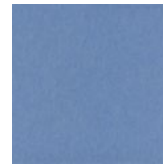
Ivory
IV11



Wasabi
WA29



Sea Salt
SE57



Marine
MA15



Lilac
LI13



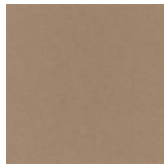
Peach
PE19



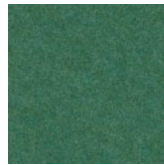
Popcorn
PO26



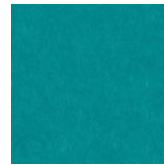
Slate
SL27



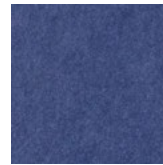
Umber
UM54



Thistle
TH28



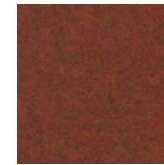
Peacock
PE20



Iris
IR10



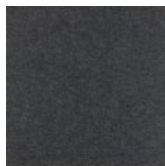
Berry
BE06



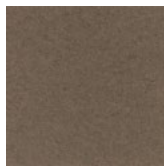
Peppercorn
PE22



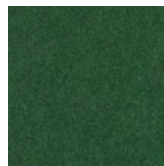
Carrot
CA08



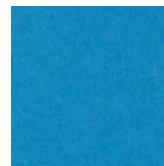
Charcoal
CH01



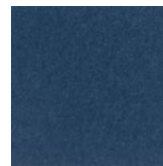
Walnut
WA56



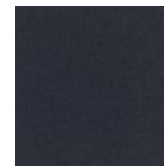
Oregano
OR18



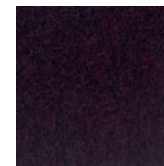
Azure
AZ05



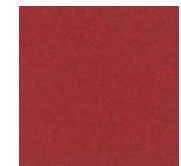
Granite
GR62



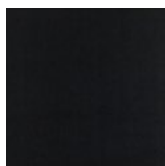
Flint
FL64



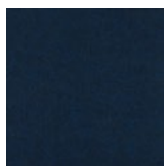
Shiraz
SH63



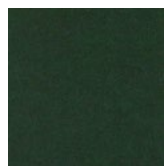
Currant
CU59



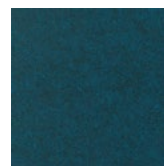
Piano Black
PI24



Midnight
MI16



Kale
KA12



Denim
DE09

Order samples at acoufelt.com/colorways

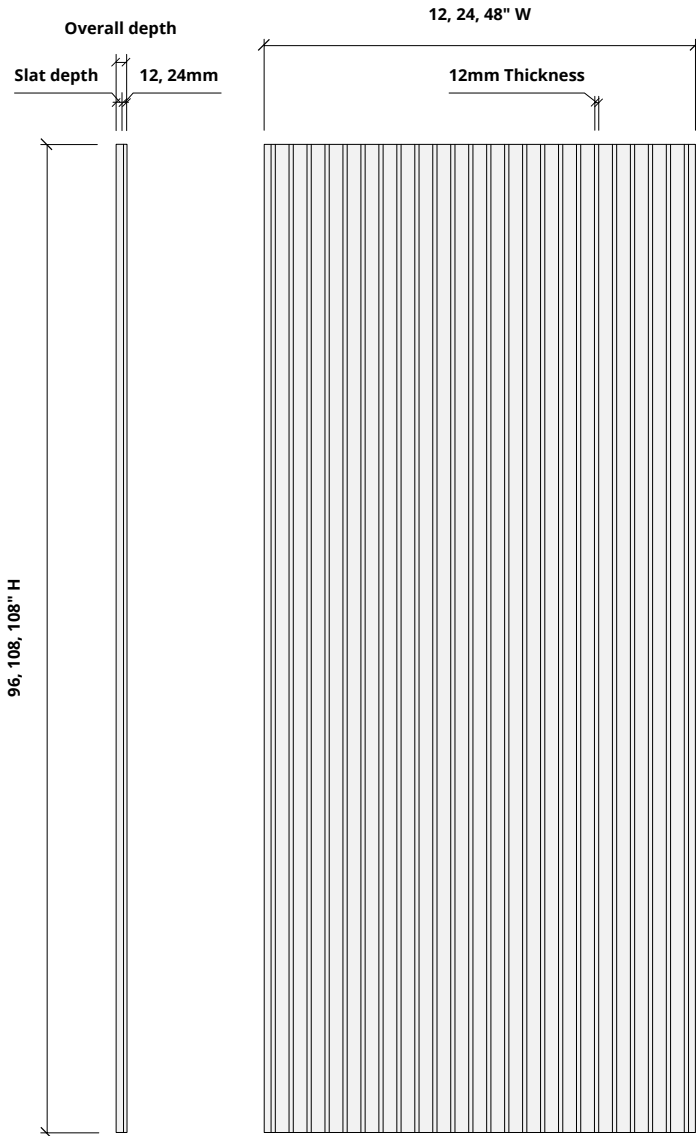


Call 800.966.8557 with questions or visit acoufelt.com for more product information, downloads, and colorways.

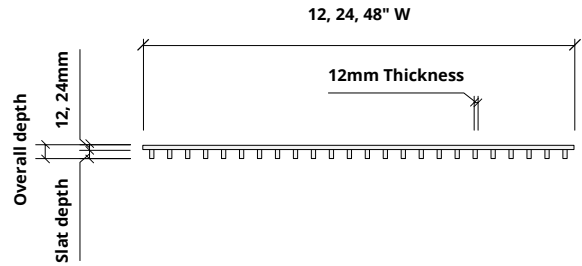
Sizes

Standard Sizes	Width: 12, 24, 48" W Height: 96, 108, 110" H Slat depth: 1, 2, 4, 6" D
Thickness	1/2", 12mm (±10%) 1", 24mm (±10%)

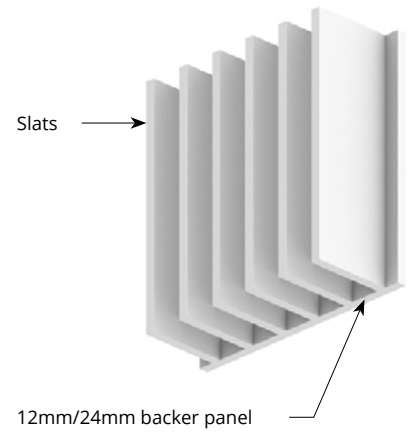
Elevations



Plan



Perspective



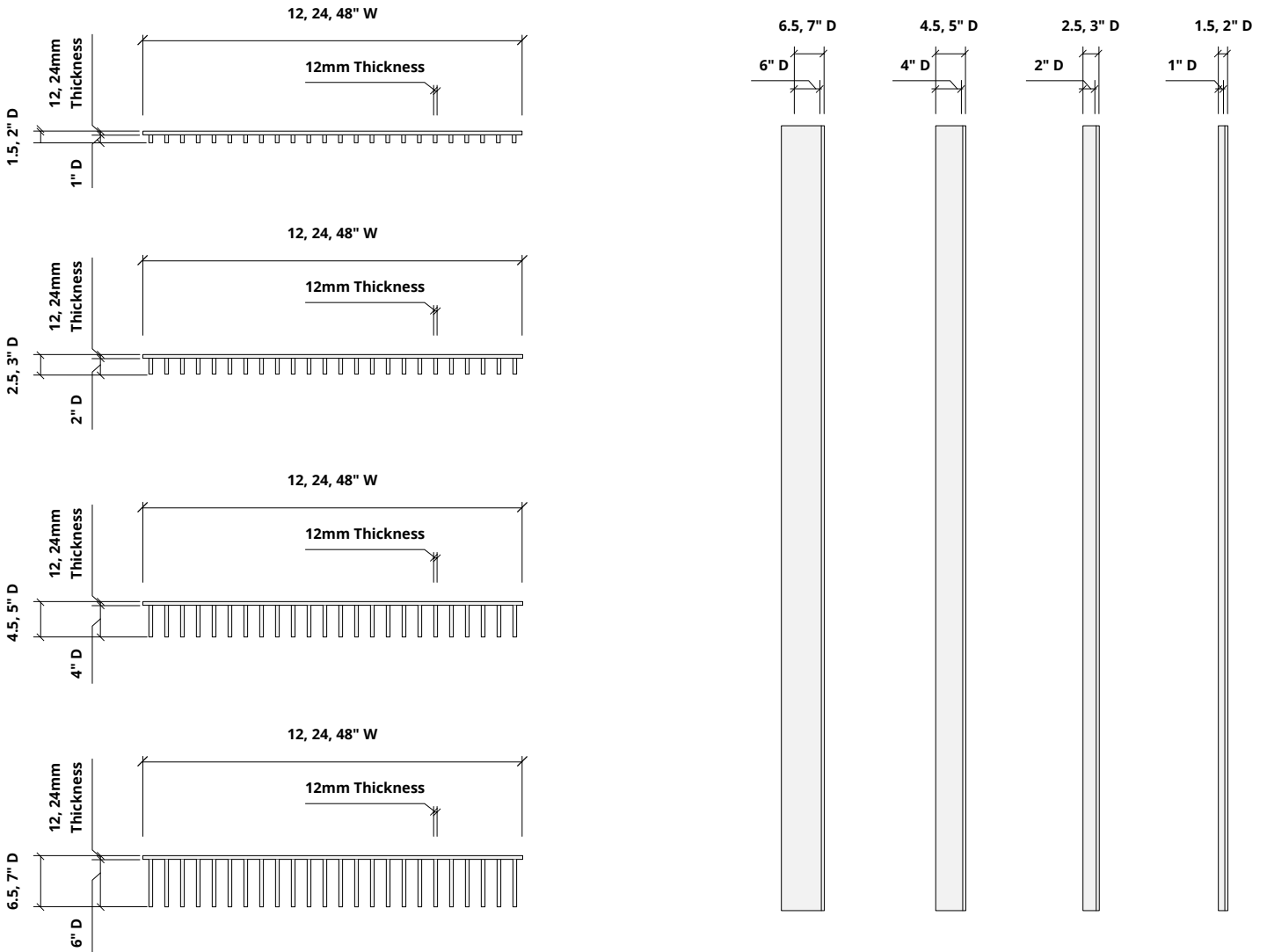
How to Specify

1. Choose Slat Depth

2. Choose Backer Panel Thickness

3. Choose Colorways

Slats are available in 4 depths:



How to Specify

1. Choose Slat Depth

2. Choose Backer Panel Thickness

3. Choose Colorways

Backer panels are available in 12mm or 24mm thickness.

12mm
thickness



24mm
thickness



1. Choose Slat Depth

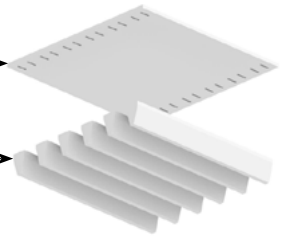
2. Choose Backer Panel Thickness

3. Choose Colorways

Select one colorway for your slats and one colorway for your backer panel.
See colorway choices on the following pages.

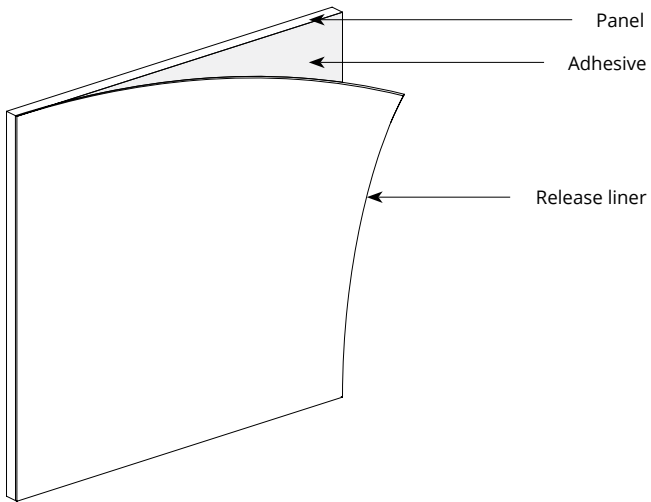
Backer panel
Select one colorway

Slats
Select one colorway

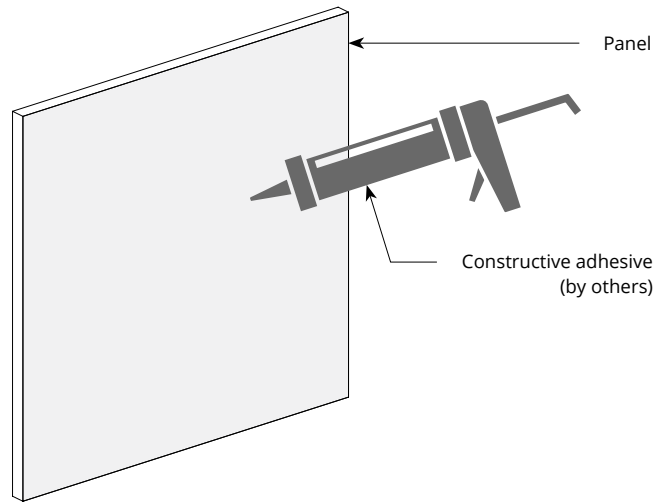


Mounting Methods

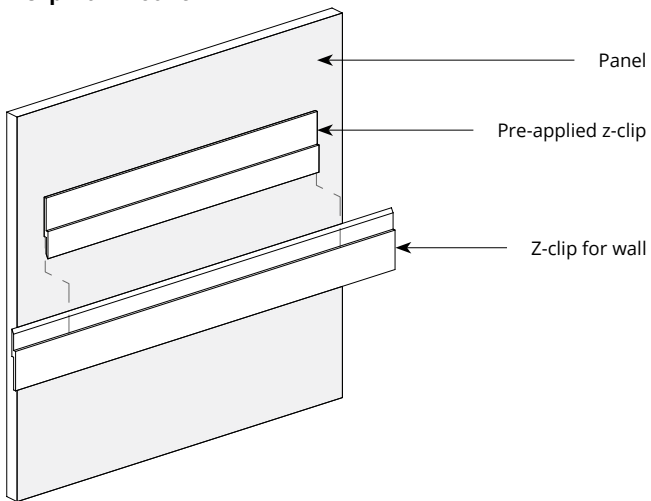
Adhesive backing



Construction adhesive



Z-clip wall mount



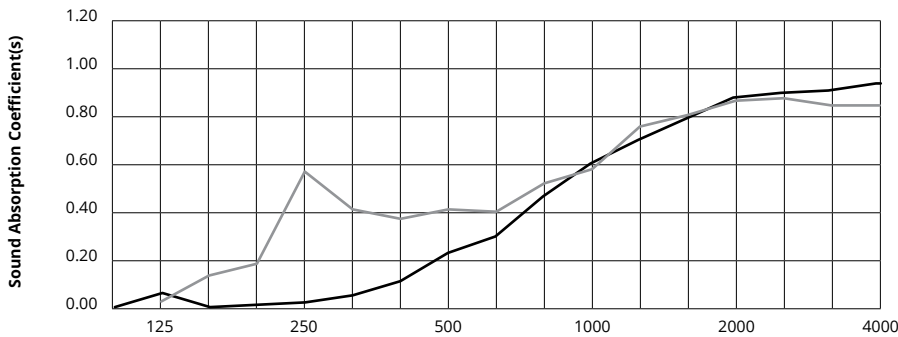
** For wall mount applications only.*



Call **800.966.8557** with questions or visit **acoufelt.com** for more product information, downloads, and colorways.

Acoustic Performance

Test Method	ASTM C423-09a
Install Method	A
Rating Method	ISO 11654-2002
Test Results	<p>12mm</p> <p>0.45, no air gap 0.54, 12mm air gap 0.64, 20mm air gap SAA 0.43, no air gap SAA 0.54, 12mm air gap SAA 0.63, 20mm air gap</p> <p>24mm</p> <p>0.60, no air gap SAA 0.55, no air gap</p>



	Frequency f (Hz)	125	250	500	1000	2000	4000	NRC
	12mm	0.06	0.02	0.23	0.61	0.89	0.95	0.45
	24mm	0.02	0.57	0.41	0.58	0.87	0.85	0.60

What is a Noise Reduction Coefficient (NRC)?

You'll find the NRC rating in the specifications of all of our products. This acronym stands for Noise Reduction Coefficient, and is expressed as a single number, a rating that describes the degree to which acoustic products can absorb sound.

You can use NRC values to understand the overall performance of our acoustic wall and ceiling products. The higher the NRC, the better the product is at soaking up the sound.

Performance Indices: Noise Reduction Coefficient (NRC) results represent the absorption coefficients measured at the one third octave bands at 125, 250, 500, 1000, 2000 and 4000 Hz rounded to the nearest 0.05. Acoustic testing has been performed according to the methods mentioned above. Customization of installation of the product could alter the results. Sound Absorption Average (SAA) indicates the absorption coefficient average for the twelve one-third octave bands ranging between 200 and 2500 Hz.