

# Pendant Ceiling Clouds

Premier Collection

Transform sound absorption into grand-scale art. Blend and suspend Pendant vertical baffles in a cloud of colors and sizes to create a distinct, beautifully performing sculptural installation. The contemporary prism shape and precision fabrication, combined with an invisible structure and lightweight design,

## Specifications

<b>Surface</b>	Ceiling
<b>Material</b>	Filasorb™ polyester felt
<b>Thickness</b>	1/2", 12mm (±10%)
<b>Weight</b>	0.49 lb./ft <sup>2</sup> (±10%)
<b>Standard Sizes</b>	Panel Width: 8", 12", and 16" Heights: Range from 24" up to 108"



Pendant Ceiling Cloud in Pearl

## Technical

<b>NRC Rating</b>	0.45
<b>Fire Test</b>	ASTM E84, Class A Flame spread index: 15 Smoke developed index: 200
<b>Colorfastness</b>	ISO 105-B02, 6-7

## Details

<b>Lead Time</b>	3 – 6 weeks
<b>Origin</b>	Manufactured and assembled in the US
<b>Warranty</b>	Product: 20 years* Colorfastness: 20 years*

\* Conditions apply

## Environmental

<b>Recycled Content</b>	Minimum 60%
<b>Energy</b>	Generated using 40% solar energy
<b>Indoor Air Quality</b>	VOC less than/equal to 0.5mg/m3
<b>Recyclable</b>	100%*
<b>Certifications</b>	Declare Certification - LBC Red List Free (third-party verified) SCS Global Indoor Advantage Gold

\* PET is recyclable through participating partners.



# Colorways

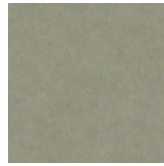
## PREMIER



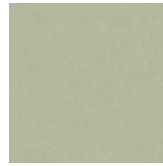
White  
WH12



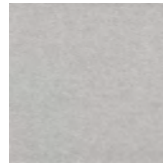
Almond  
AL55



Pistachio  
PI25



Celery  
CE65



Metal  
ME03



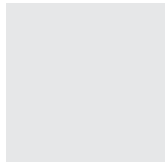
Flamingo  
FL61



Quartz  
QU67



Turmeric  
TU60



Platinum  
PL04



Pearl  
PE21



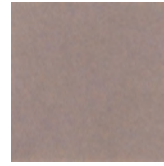
Eucalyptus  
EU71



Sencha  
SE58



Periwinkle  
PE23



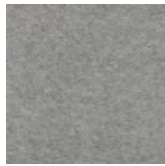
Amethyst  
AM69



Valentine  
VA70



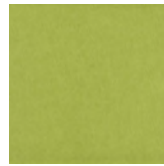
Wheat  
WH68



Grey  
GR02



Ivory  
IV11



Wasabi  
WA29



Sea Salt  
SE57



Marine  
MA15



Lilac  
LI13



Peach  
PE19



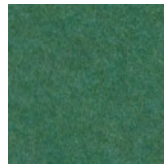
Popcorn  
PO26



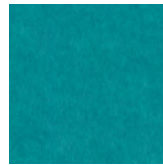
Slate  
SL27



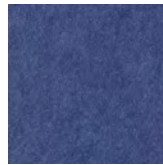
Umber  
UM54



Thistle  
TH28



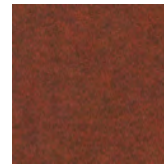
Peacock  
PE20



Iris  
IR10



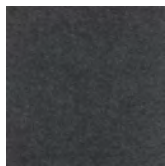
Berry  
BE06



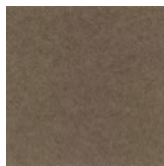
Peppercorn  
PE22



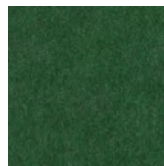
Carrot  
CA08



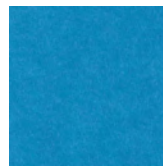
Charcoal  
CH01



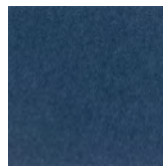
Walnut  
WA56



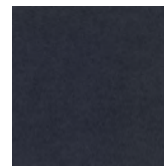
Oregano  
OR18



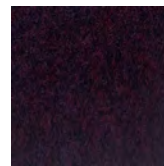
Azure  
AZ05



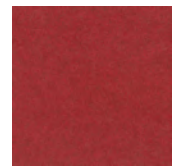
Granite  
GR62



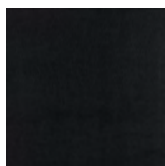
Flint  
FL64



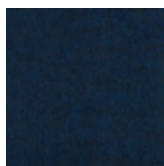
Shiraz  
SH63



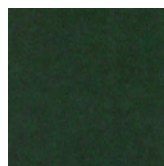
Currant  
CU59



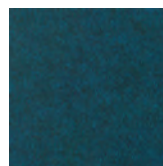
Piano Black  
PI24



Midnight  
MI16



Kale  
KA12



Denim  
DE09

Order samples at [acoufelt.com/colorways](https://acoufelt.com/colorways)



Call 800.966.8557 with questions or visit [acoufelt.com](https://acoufelt.com) for more product information, downloads, and colorways.

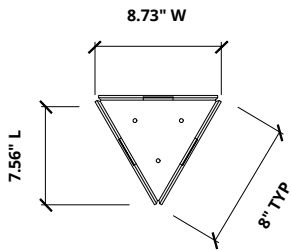
# Sizes

<b>Standard Sizes</b>	Panel Width: 8", 12", and 16" Heights: Range from 24" up to 108"
<b>Thickness</b>	1/2", 12mm (±10%)

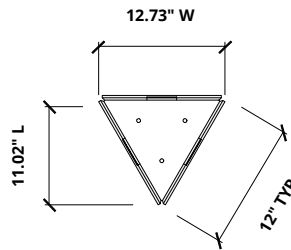
Perspective



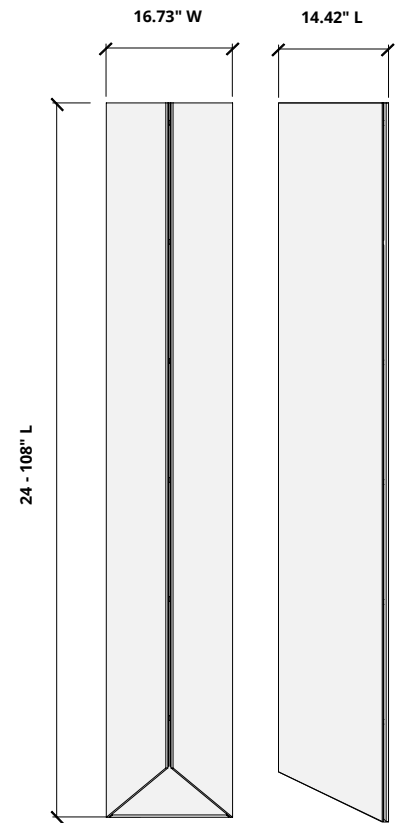
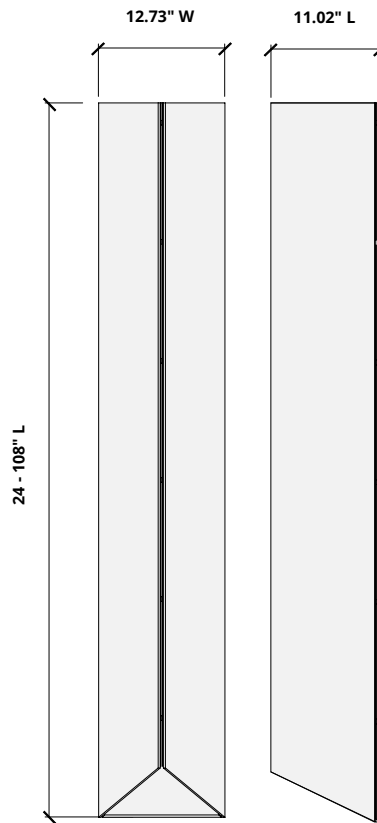
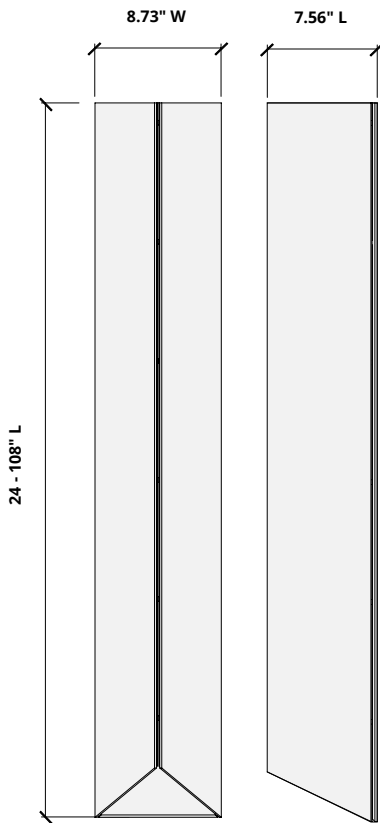
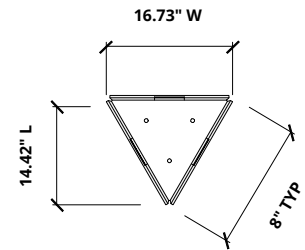
Plan



Plan

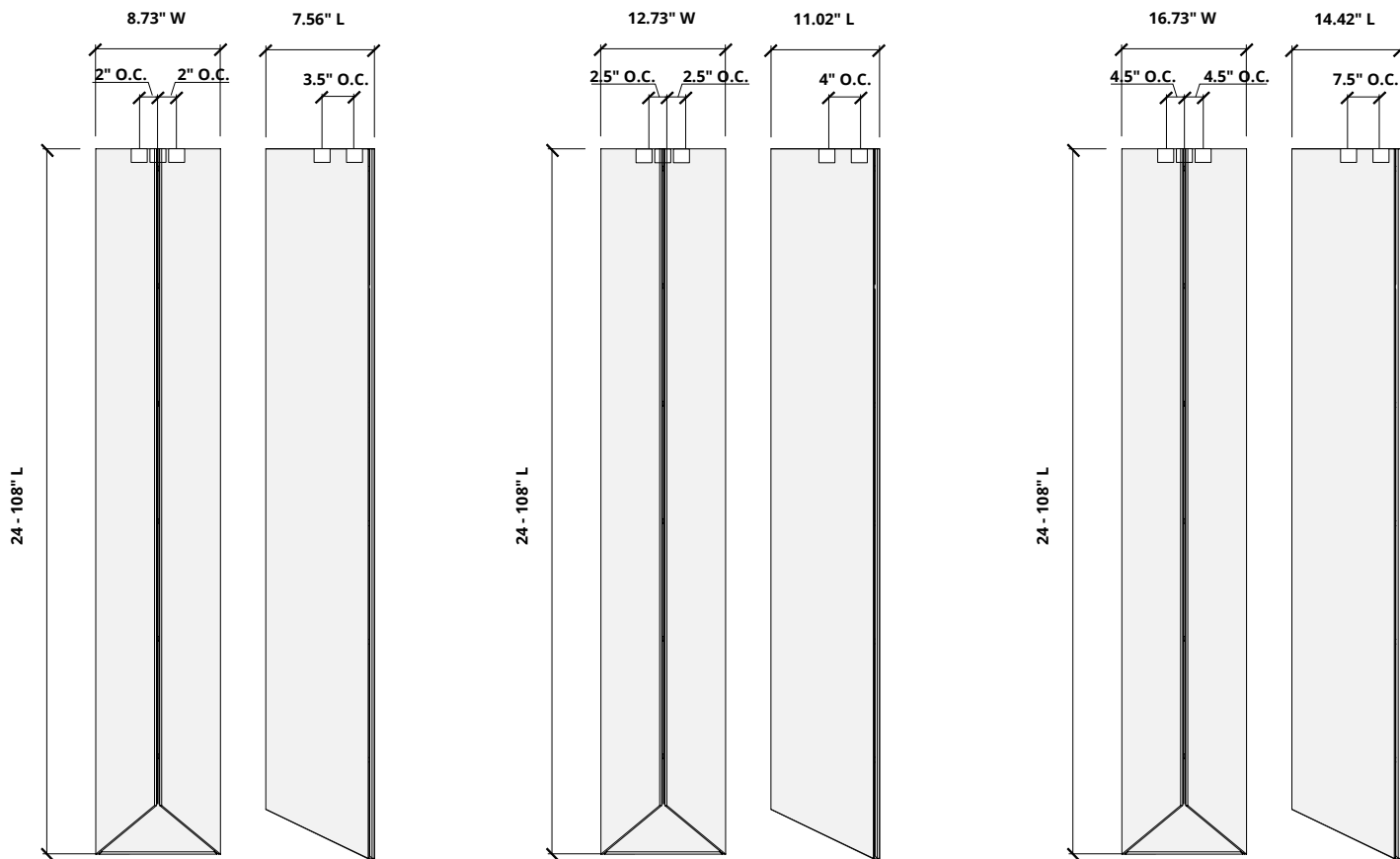


Plan



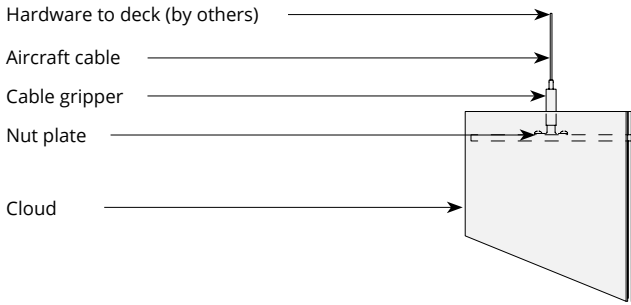
# Hardware Spacing

8.73" W	2" on center spacing
12.73" W	2.5" on center spacing
16.73" W	4.5" on center spacing
7.56" L	3.5" on center spacing
11.02" L	4" on center spacing
14.42" L	7.5" on center spacing

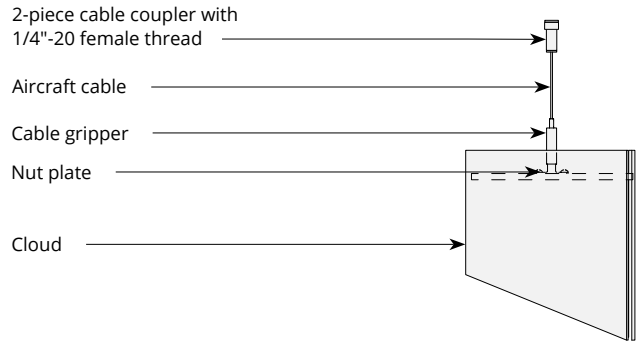


# Mounting Methods

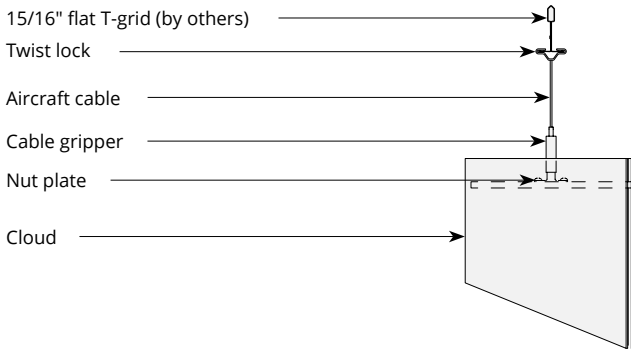
## Cable



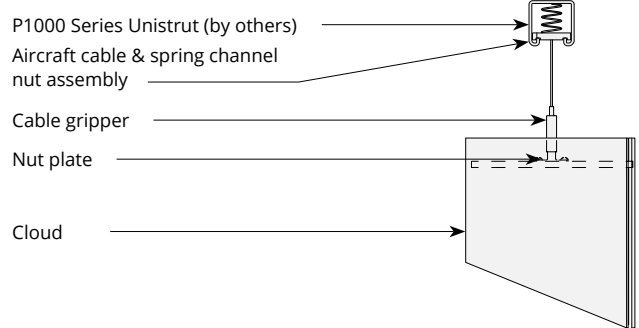
## Cable to deck



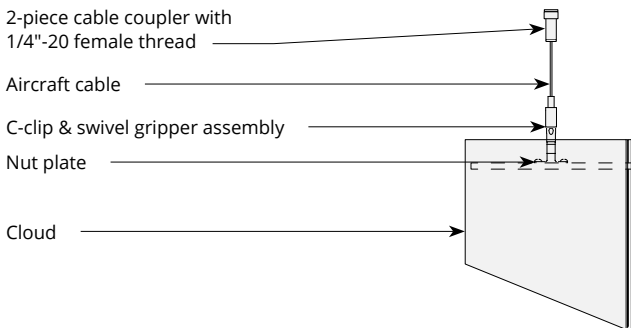
## Cable to T-grid



## Cable to Unistrut

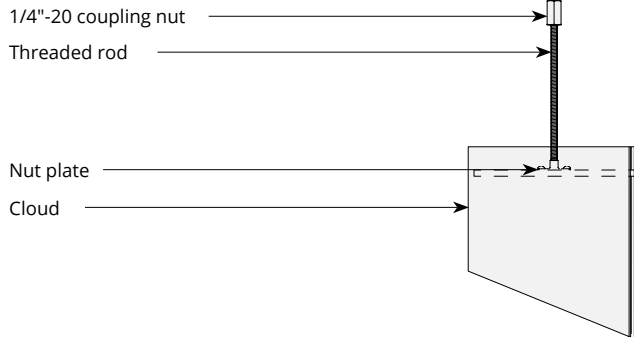


## Swivel cable to deck

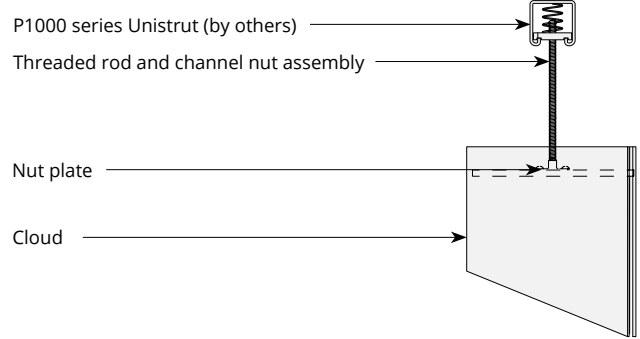


# Mounting Methods cont'd.

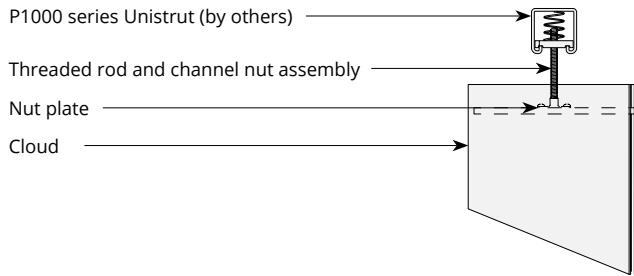
## Threaded rod



## Threaded rod to Unistrut

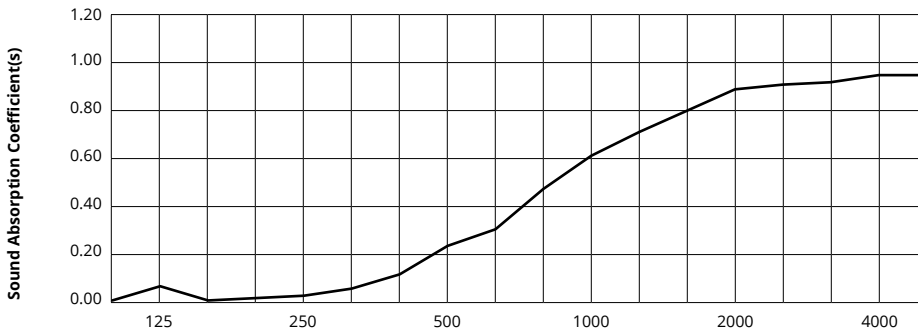


## Direct to Unistrut



# Acoustic Performance

<b>Test Method</b>	ASTM C423-17
<b>Install Method</b>	Type A
<b>Rating Method</b>	ISO 11654-2007
<b>Test Results</b>	NRC 0.45, no air gap SAA 0.43



Frequency f (Hz)	125	250	500	1000	2000	4000	NRC
12mm	0.06	0.02	0.23	0.61	0.89	0.95	0.45

## What is a Noise Reduction Coefficient (NRC)?

You'll find the NRC rating in the specifications of all of our products. This acronym stands for Noise Reduction Coefficient, and is expressed as a single number, a rating that describes the degree to which acoustic products can absorb sound.

You can use NRC values to understand the overall performance of our acoustic wall and ceiling products. The higher the NRC, the better the product is at soaking up the sound.

*Performance Indices: Noise Reduction Coefficient (NRC) results represent the absorption coefficients measured at the one third octave bands at 125, 250, 500, 1000, 2000 and 4000 Hz rounded to the nearest 0.05. Acoustic testing has been performed according to the methods mentioned above. Customization of installation of the product could alter the results. Sound Absorption Average (SAA) indicates the absorption coefficient average for the twelve one-third octave bands ranging between 200 and 2500 Hz.*