



Pixel

Wall Panels

Premium Collection

Pixel is a double-layer acoustic wall covering with precision patterns cut into the outer layer to reveal the second layer beneath. Adding depth, texture, pattern, color, and sound absorption, these soundscaping elements work together to make quiet beautiful. Choose any two colors from the Acoufelt palette to create your Pixel pattern.

Specifications

Surface	Wall
Material	Filasorb™ polyester felt
Thickness	1/2", 14mm (±10%) 1", 24mm (±10%)
Weight	14mm, 0.49 lb./ft ² (±10%) 24mm, 0.98 lb./ft ² (±10%)
Standard Sizes	48" W x 108" H <i>Custom sizes available</i>



Pixel Wall Panel with Rectangle Pattern in Kale and Thistle



Pixel Wall Panel with Triangle Pattern in Popcorn and Almond

Technical

NRC Rating	14mm 0.55, no air gap 0.70, 20mm air gap 0.75, 50mm air gap 24mm 0.60, no air gap
Fire Test	ASTM E84, Class A Flame spread index: 15 Smoke developed index: 200
Colorfastness	ISO 105-B02, 6-7

Details

Lead Time	3 – 6 weeks
Origin	Manufactured and assembled in the US
Warranty	Product: 20 years* Colorfastness: 20 years*

* Conditions apply

Environmental

Recycled Content	Minimum 60%
Energy	Generated using 40% solar energy
Indoor Air Quality	VOC less than/equal to 0.5mg/m ³
Recyclable	100%*
Certifications	Environmental Product Declaration Declare Certification - LBC Red List Free (third-party verified) SCS Global Indoor Advantage Gold

* PET is recyclable through participating partners.



Call **800.966.8557** with questions or visit **acoufelt.com** for more product information, downloads, and colorways.

Colorways

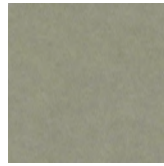
PREMIUM



White
WH12



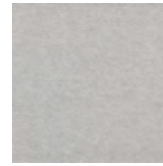
Almond
AL55



Pistachio
PI25



Celery
CE65



Metal
ME03



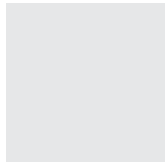
Flamingo
FL61



Quartz
QU67



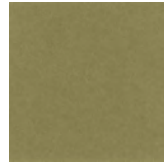
Turmeric
TU60



Platinum
PL04



Pearl
PE21



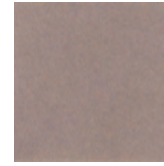
Eucalyptus
EU71



Sencha
SE58



Periwinkle
PE23



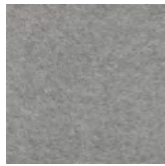
Amethyst
AM69



Valentine
VA70



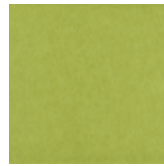
Wheat
WH68



Grey
GR02



Ivory
IV11



Wasabi
WA29



Sea Salt
SE57



Marine
MA15



Lilac
LI13



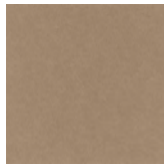
Peach
PE19



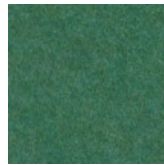
Popcorn
PO26



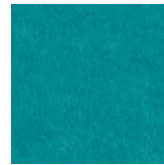
Slate
SL27



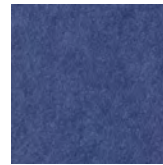
Umber
UM54



Thistle
TH28



Peacock
PE20



Iris
IR10



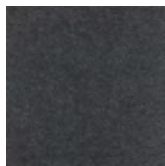
Berry
BE06



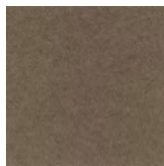
Peppercorn
PE22



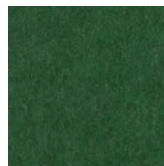
Carrot
CA08



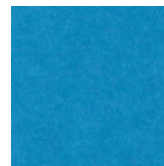
Charcoal
CH01



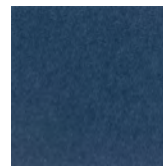
Walnut
WA56



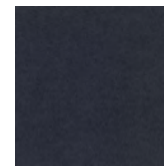
Oregano
OR18



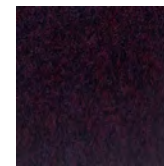
Azure
AZ05



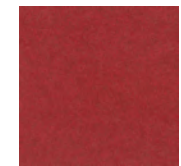
Granite
GR62



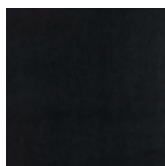
Flint
FL64



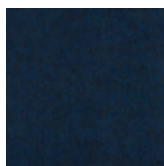
Shiraz
SH63



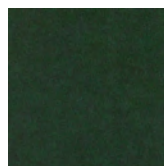
Currant
CU59



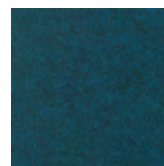
Piano Black
PI24



Midnight
MI16



Kale
KA12



Denim
DE09

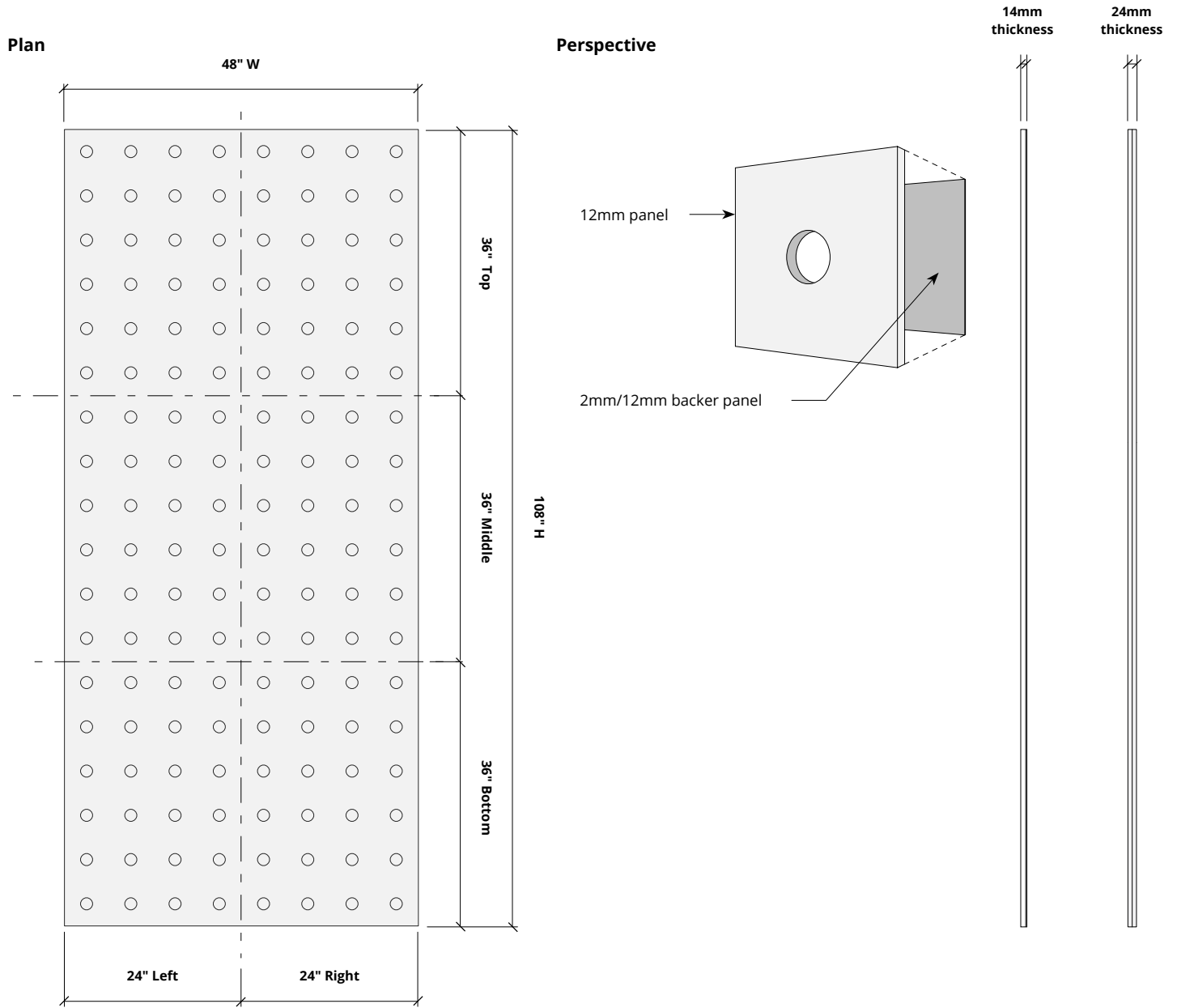
Order samples at acoufelt.com/colorways



Call 800.966.8557 with questions or visit acoufelt.com for more product information, downloads, and colorways.

Sizes

Standard Sizes	48" W x 108" H <i>Custom sizes available</i>
Thickness	1/2", 14mm (±10%) 1", 24mm (±10%)



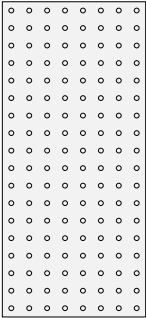
* Product available as full panels or as sections of a panel as filler pieces.
Choose any of the standard height or segments (i.e. bottom right, middle left, etc) to fill the space as needed.

How to Specify

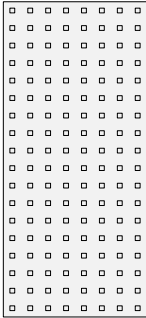
1. Choose Panel Pattern

2. Choose Colorways

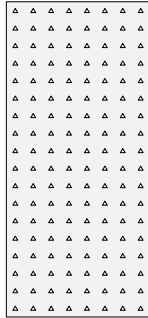
Select desired panel pattern.



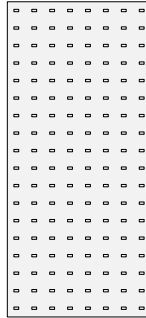
CIRCLE



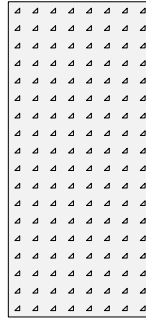
SQUARE



TRIANGLE



RECTANGLE

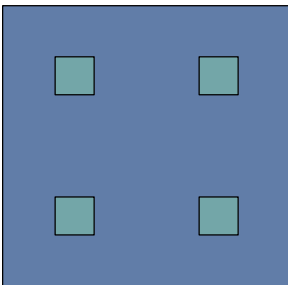


RIGHT TRIANGLE

1. Choose Panel Pattern

2. Choose Colorways

Select two colors: one for the face panel and one for the back panel to create a Pixel that is uniquely yours.

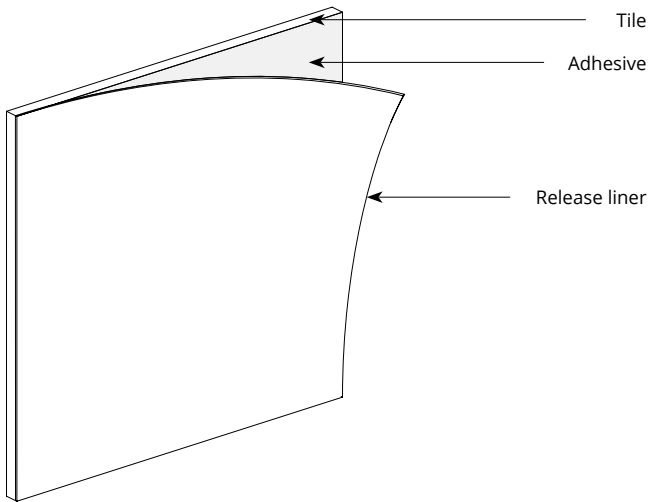


Parallax in Marine and Sea Salt

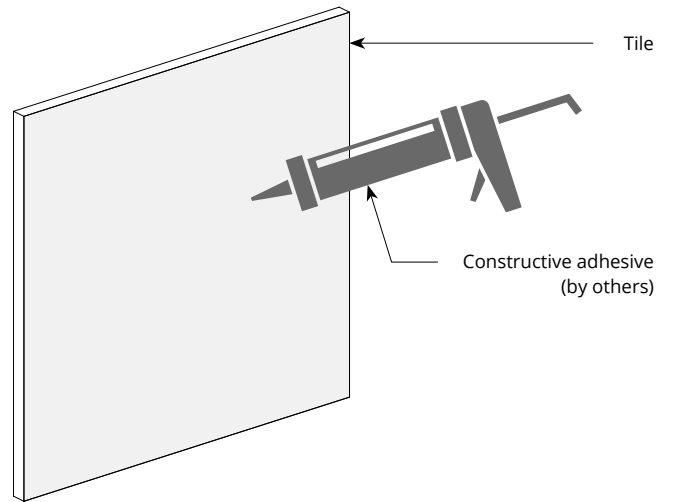


Mounting Methods

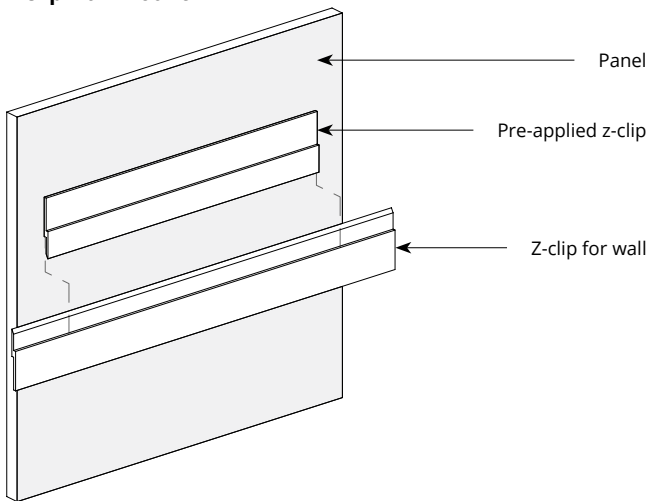
Adhesive backing



Construction adhesive

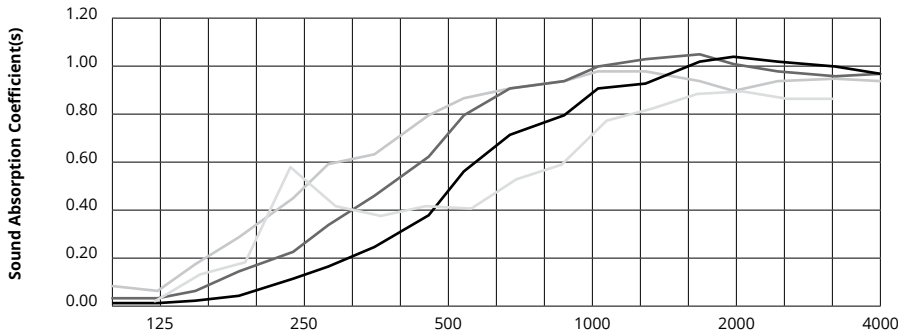


Z-clip wall mount



Acoustic Performance

Test Method	ISO 354-2006
Install Method	A
Rating Method	ISO 11654-2002
Test Results	<p>14mm NRC 0.55, no air gap NRC 0.70, 20mm air gap NRC 0.75, 50mm air gap SAA 0.56, no air gap SAA 0.70, 20mm air gap SAA 0.76 50mm air gap</p> <p>24mm NRC 0.60, no air gap</p>



	Frequency f (Hz)	125	250	500	1000	2000	4000	NRC
	14mm	0.01	0.11	0.37	0.78	1.00	0.98	0.55
	14mm, 20mm air gap	0.03	0.22	0.61	0.93	1.03	0.94	0.70
	14mm, 50mm air gap	0.06	0.44	0.78	0.92	0.92	0.93	0.75
	24mm	0.02	0.57	0.41	0.58	0.87	0.85	0.60

What is a Noise Reduction Coefficient (NRC)?

You'll find the NRC rating in the specifications of all of our products. This acronym stands for Noise Reduction Coefficient, and is expressed as a single number, a rating that describes the degree to which acoustic products can absorb sound.

You can use NRC values to understand the overall performance of our acoustic wall and ceiling products. The higher the NRC, the better the product is at soaking up the sound.

Performance Indices: Noise Reduction Coefficient (NRC) results represent the absorption coefficients measured at the one third octave bands at 125, 250, 500, 1000, 2000 and 4000 Hz rounded to the nearest 0.05. Acoustic testing has been performed according to the methods mentioned above. Customization of installation of the product could alter the results. Sound Absorption Average (SAA) indicates the absorption coefficient average for the twelve one-third octave bands ranging between 200 and 2500 Hz.