



QuietForm™ Wall Tiles

Premier Collection

QuietForm™ Tiles are a thermal molded acoustics product, designed for a three-dimensional wall finish with transformative soundscaping functionality. Drawing inspiration from timeless architecture, our QuietForm patterns pay homage to the grandeur of history's most iconic structures.

Specifications

Surface	Wall
Material	Filasorb™ polyester felt
Thickness	1/2", 12mm (±10%) with depth up to 1/4", 7.5mm (±10%)
Weight	12mm, 0.49 lb./ft ² (±10%)
Standard Sizes	Width: 23.62", 600mm Height: 23.62", 600mm



QuietForm™ with Eclipse Pattern in Flamingo

Technical

NRC Rating	0.45
Fire Test	ASTM E84, Class A Flame spread index: 15 Smoke developed index: 200
Colorfastness	ISO 105-B02, 6-7

Details

Lead Time	3 - 6 weeks
Origin	Manufactured and assembled in the US
Warranty	Product: 20 years* Colorfastness: 20 years*

* Conditions apply

Environmental

Recycled Content	Minimum 60%
Energy	Generated using 40% solar energy
Indoor Air Quality	VOC less than/equal to 0.5mg/m ³
Recyclable	100%*
Certifications	Declare Certification - LBC Red List Free (third-party verified) SCS Global Indoor Advantage Gold

* PET is recyclable through participating partners.

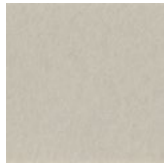


Colorways

PREMIER



White
WH12



Almond
AL55



Pistachio
PI25



Celery
CE65



Metal
ME03



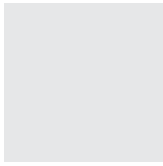
Flamingo
FL61



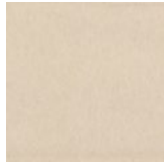
Quartz
QU67



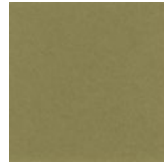
Turmeric
TU60



Platinum
PL04



Pearl
PE21



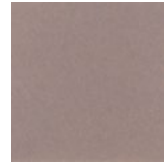
Eucalyptus
EU71



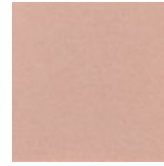
Sencha
SE58



Periwinkle
PE23



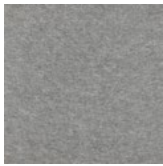
Amethyst
AM69



Valentine
VA70



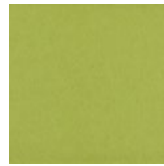
Wheat
WH68



Grey
GR02



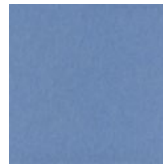
Ivory
IV11



Wasabi
WA29



Sea Salt
SE57



Marine
MA15



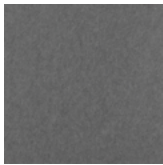
Lilac
LI13



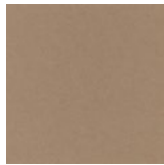
Peach
PE19



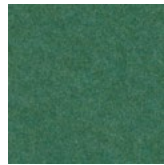
Popcorn
PO26



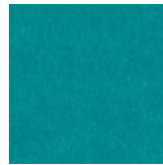
Slate
SL27



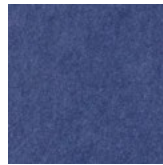
Umber
UM54



Thistle
TH28



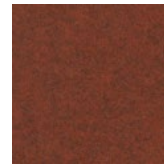
Peacock
PE20



Iris
IR10



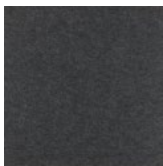
Berry
BE06



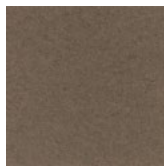
Peppercorn
PE22



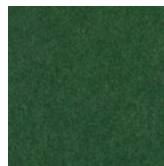
Carrot
CA08



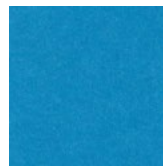
Charcoal
CH01



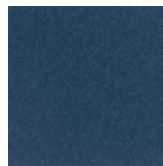
Walnut
WA56



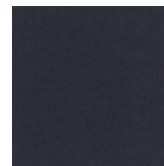
Oregano
OR18



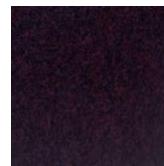
Azure
AZ05



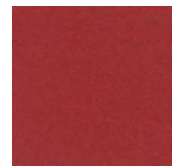
Granite
GR62



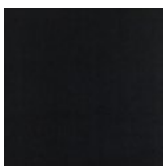
Flint
FL64



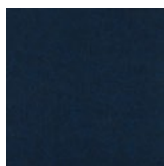
Shiraz
SH63



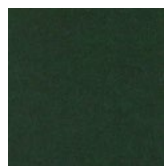
Currant
CU59



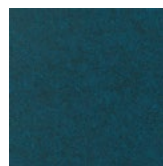
Piano Black
PI24



Midnight
MI16



Kale
KA12



Denim
DE09

Order samples at acoufelt.com/colorways

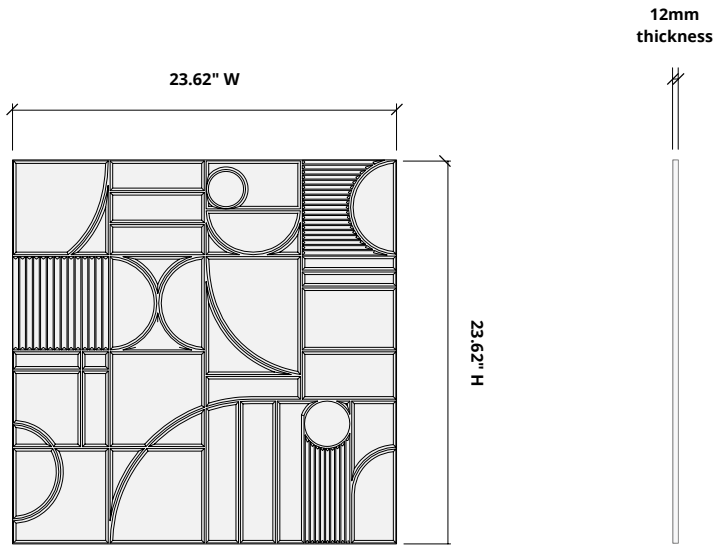


Call 800.966.8557 with questions or visit acoufelt.com for more product information, downloads, and colorways.

Sizes

Standard Sizes	Width: 23.62", 600mm Height: 23.62", 600mm
Thickness	1/2", 12mm (±10%)

Elevation

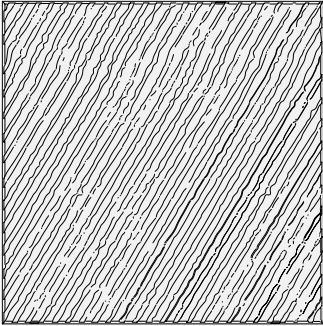


How to Specify

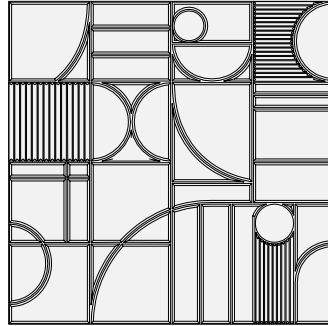
1. Choose Tile Pattern

2. Choose Colorways

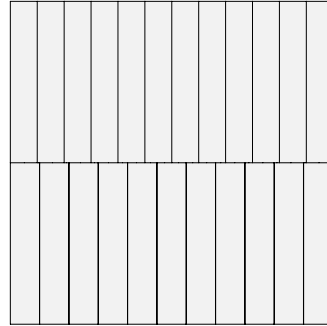
Select desired panel pattern. See recommended layouts for larger designs.



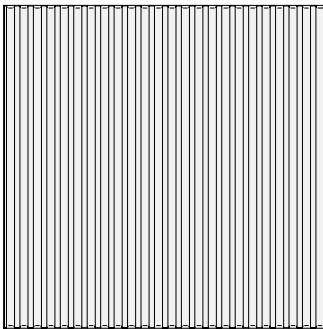
DUNE



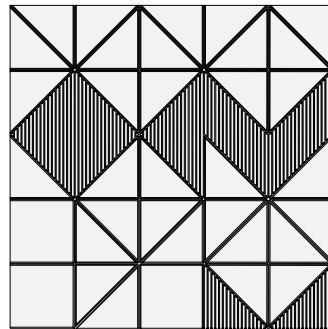
ECLIPSE



PILLAR



POLE



SPATIAL

1. Choose Tile Pattern

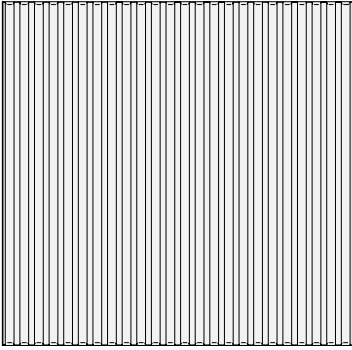
2. Choose Colorways

See colorways on page 3.



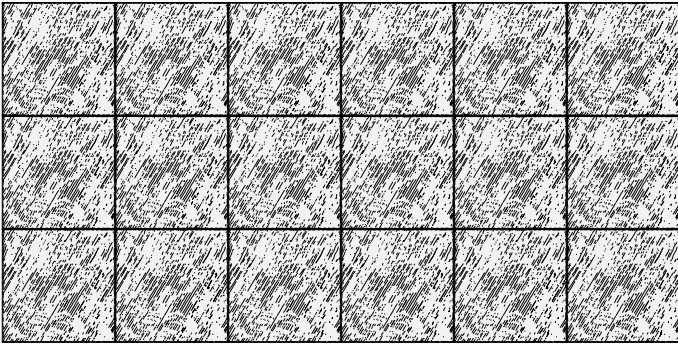
Recommended Layouts

DUNE

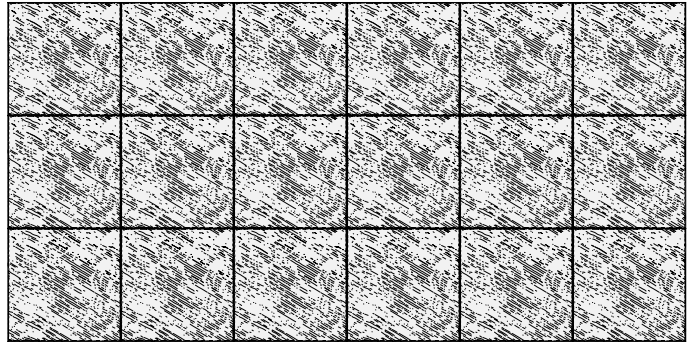


**All four sides are beveled.*

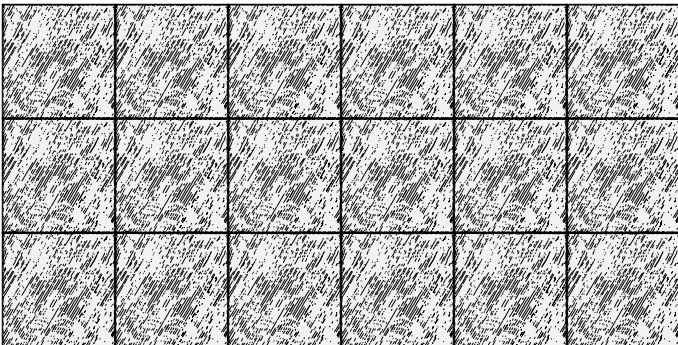
Layout 1



Layout 2

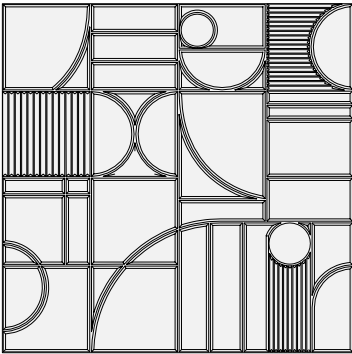


Layout 3

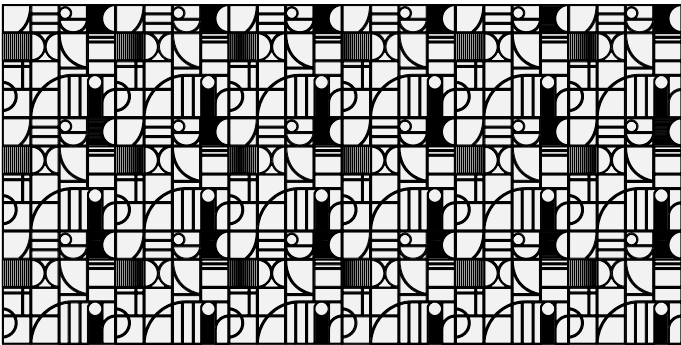


Recommended Layouts

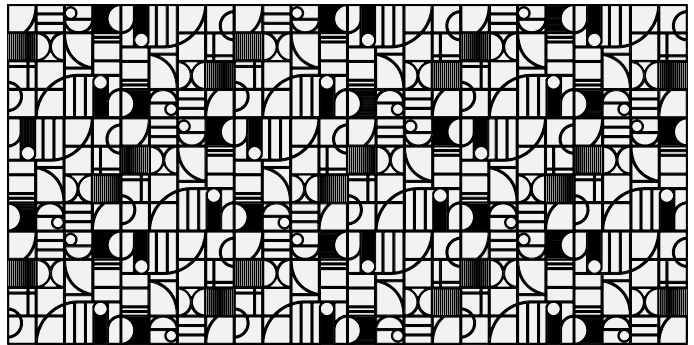
ECLIPSE



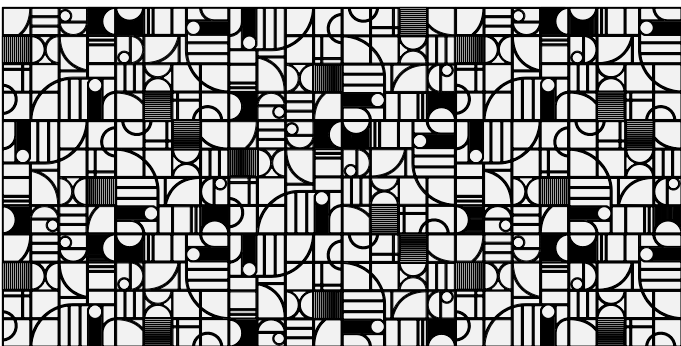
Layout 1



Layout 2

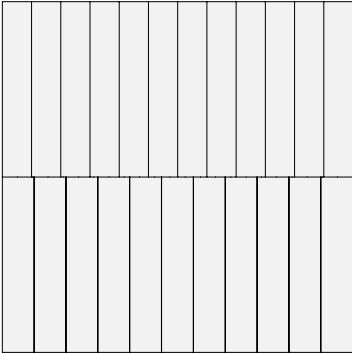


Layout 3

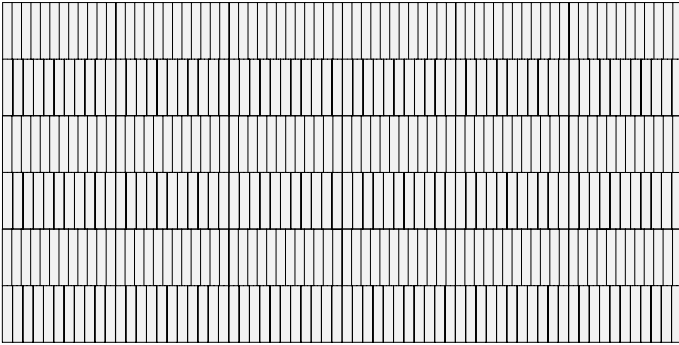


Recommended Layouts

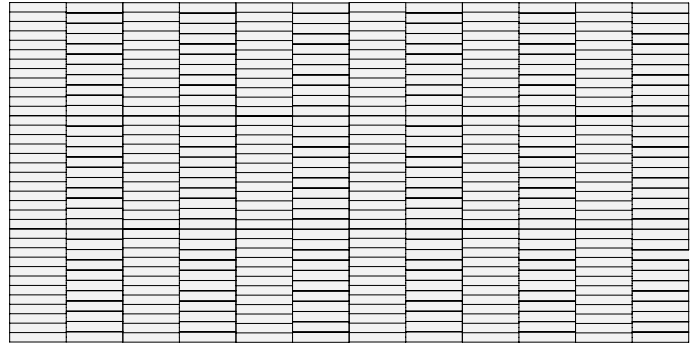
PILLAR



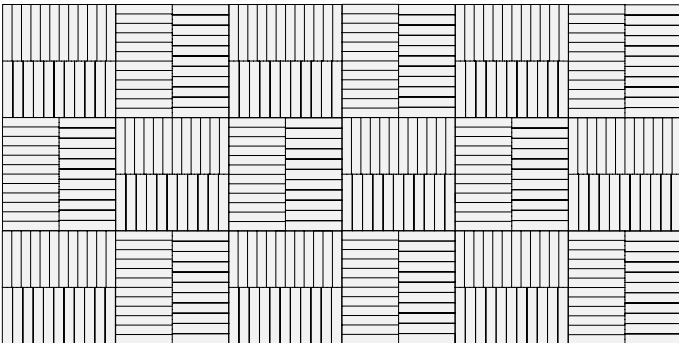
Layout 1



Layout 2

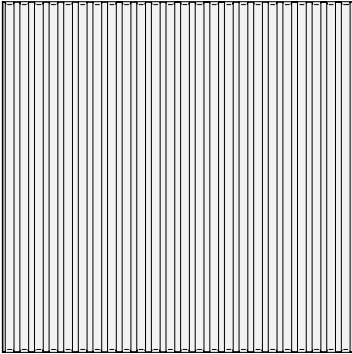


Layout 3



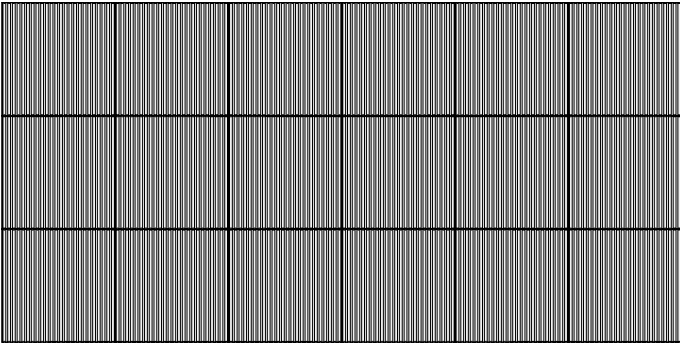
Recommended Layouts

POLE

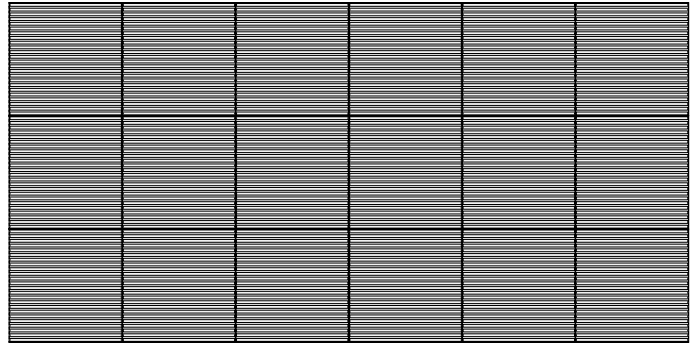


**All four sides are beveled.*

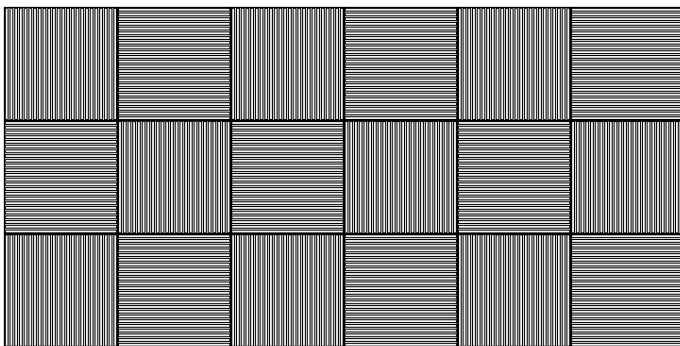
Layout 1



Layout 2

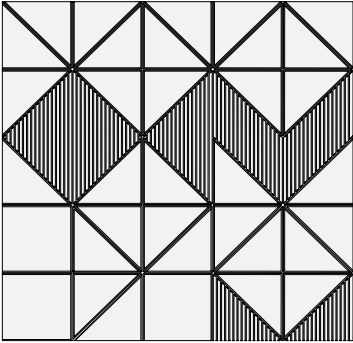


Layout 3



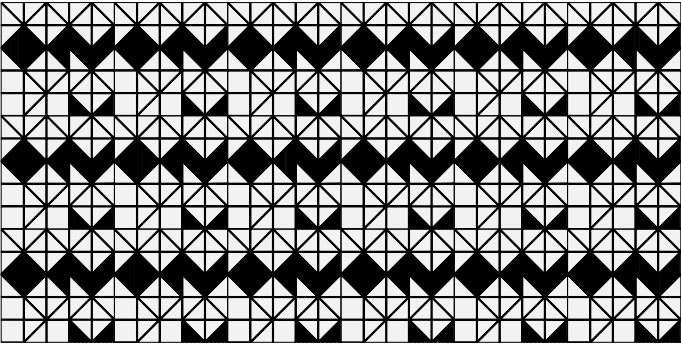
Recommended Layouts

SPATIAL

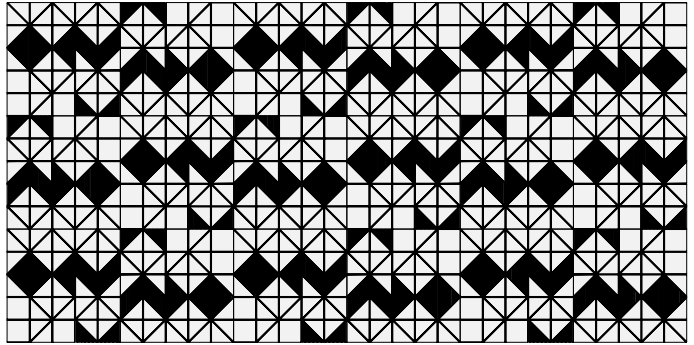


*All four sides are beveled.

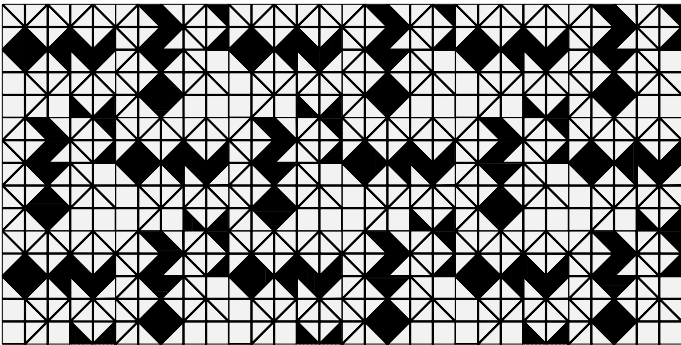
Layout 1



Layout 2

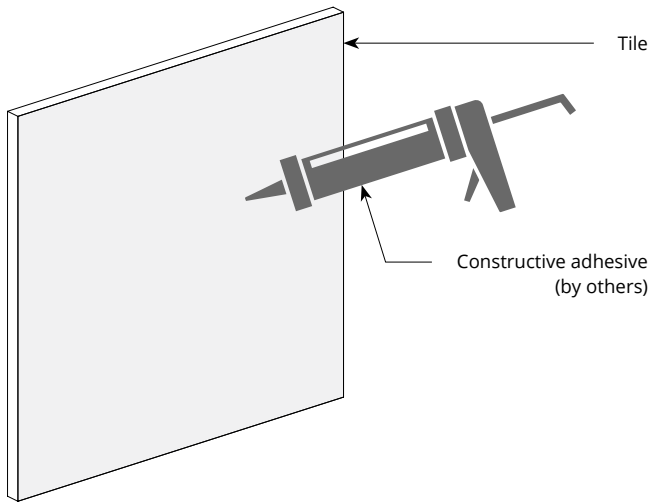


Layout 3



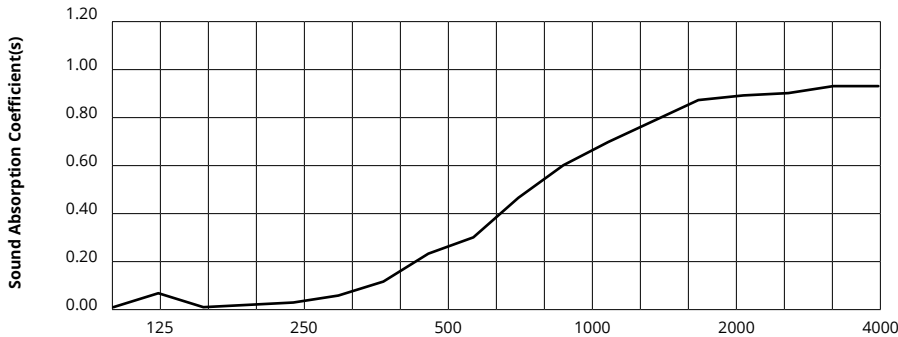
Mounting Methods

Construction adhesive



Acoustic Performance

Test Method	ISO 354-2006
Install Method	Type A
Mounting Method	No air gap
Rating Method	ISO 11654-2002
Test Results	NRC 0.45 SAA 0.43



Frequency f (Hz)	125	250	500	1000	2000	4000	NRC
12mm	0.06	0.02	0.23	0.61	0.89	0.95	0.45

What is a Noise Reduction Coefficient (NRC)?

You'll find the NRC rating in the specifications of all of our products. This acronym stands for Noise Reduction Coefficient, and is expressed as a single number, a rating that describes the degree to which acoustic products can absorb sound.

You can use NRC values to understand the overall performance of our acoustic wall and ceiling products. The higher the NRC, the better the product is at soaking up the sound.

Performance Indices: Noise Reduction Coefficient (NRC) results represent the absorption coefficients measured at the one third octave bands at 125, 250, 500, 1000, 2000 and 4000 Hz rounded to the nearest 0.05. Acoustic testing has been performed according to the methods mentioned above. Customization of installation of the product could alter the results. Sound Absorption Average (SAA) indicates the absorption coefficient average for the twelve one-third octave bands ranging between 200 and 2500 Hz.