



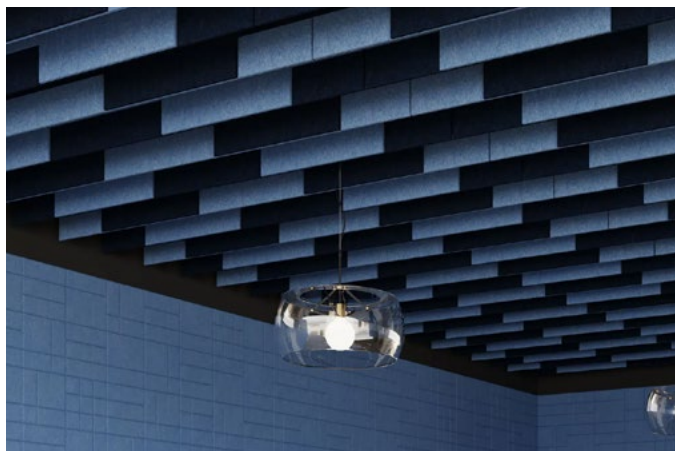
Groove Ceiling Baffles

Premier Collection

Groove offers the acoustic properties of 24mm ceiling baffles with one side offering the traditional linear baffle view and the other displaying geometric patterning in monochromatic or two-tone finishes.

Specifications

Surface	Ceiling
Material	FilaSorb™ polyester felt
Thickness	1", 24mm (±10%)
Weight	0.98 lb./ft ² (±10%)
Standard Sizes	Height: 4" up to 24" H (2" increments) Length: Range from 12" up to 110" L <i>See page 4 for more details. Custom sizes available</i>



Groove Ceiling Baffle in Azure and Midnight

Technical

NRC Rating	0.60
Fire Test	ASTM E84, Class A Flame spread index: 15 Smoke developed index: 200
Colorfastness	ISO 105-B02, 6-7

Details

Lead Time	3 – 6 weeks
Origin	Manufactured and assembled in the US
Warranty	Product: 20 years* Colorfastness: 20 years*

* Conditions apply

Environmental

Recycled Content	Minimum 60%
Energy	Generated using 40% solar energy
Indoor Air Quality	VOC less than/equal to 0.5mg/m3
Recyclable	100%*
Certifications	Environmental Product Declaration Declare Certification - LBC Red List Free (third-party verified) SCS Global Indoor Advantage Gold

* PET is recyclable through participating partners.

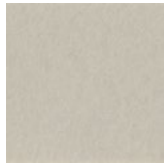


Colorways

PREMIER



White
WH12



Almond
AL55



Pistachio
PI25



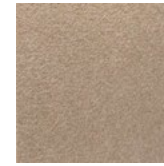
Celery
CE65



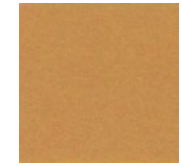
Metal
ME03



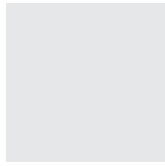
Flamingo
FL61



Quartz
QU67



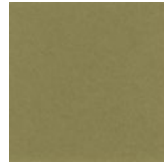
Turmeric
TU60



Platinum
PL04



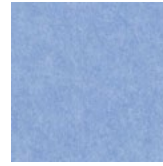
Pearl
PE21



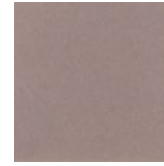
Eucalyptus
EU71



Sencha
SE58



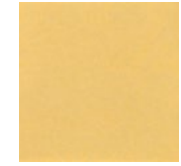
Periwinkle
PE23



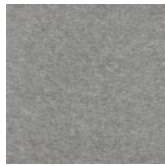
Amethyst
AM69



Valentine
VA70



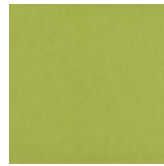
Wheat
WH68



Grey
GR02



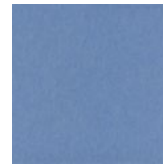
Ivory
IV11



Wasabi
WA29



Sea Salt
SE57



Marine
MA15



Lilac
LI13



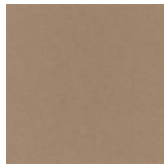
Peach
PE19



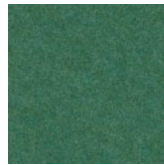
Popcorn
PO26



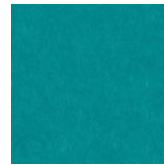
Slate
SL27



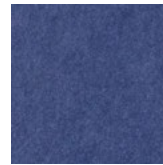
Umber
UM54



Thistle
TH28



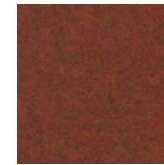
Peacock
PE20



Iris
IR10



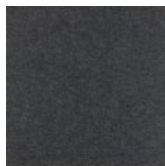
Berry
BE06



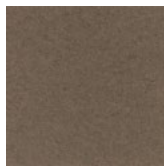
Peppercorn
PE22



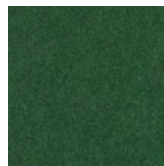
Carrot
CA08



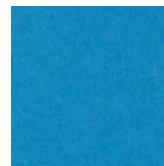
Charcoal
CH01



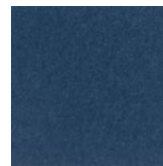
Walnut
WA56



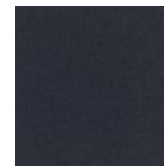
Oregano
OR18



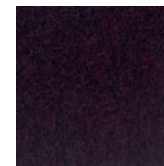
Azure
AZ05



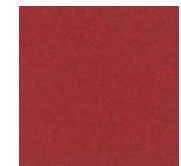
Granite
GR62



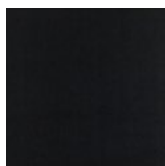
Flint
FL64



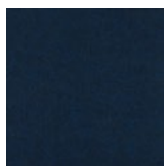
Shiraz
SH63



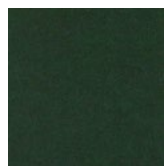
Currant
CU59



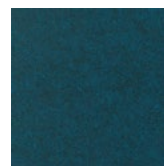
Piano Black
PI24



Midnight
MI16



Kale
KA12



Denim
DE09

Order samples at acoufelt.com/colorways



Call 800.966.8557 with questions or visit acoufelt.com for more product information, downloads, and colorways.

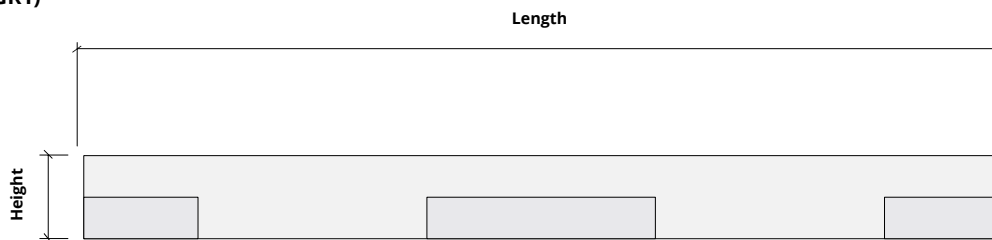
Sizes

Standard Heights 4" up to 24" H (2" increments)
Thickness 1", 24mm (±10%)

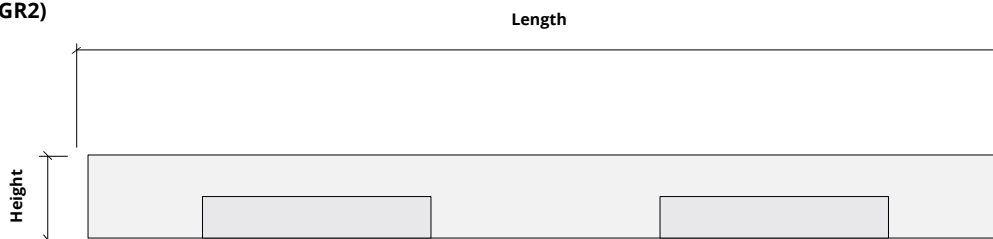
Standard Lengths 12, 18, 24, 30, 36, 42, 48, 54, 60, 66, 72, 78, 84, 90, 96, 102, 108, 110" L
Custom sizes available

Height
4"
6"
8"
10"
12"
14"
16"
18"
20"
22"
24"

Groove 1 (GR1)



Groove 2 (GR2)

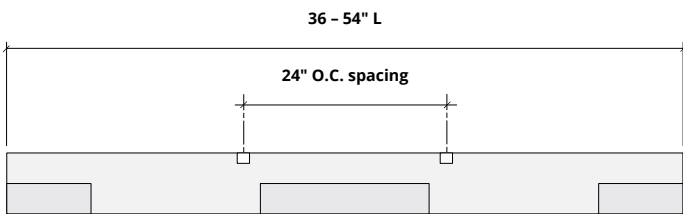
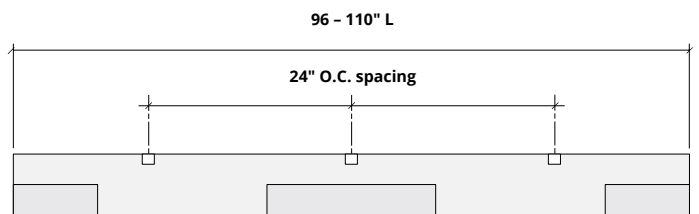
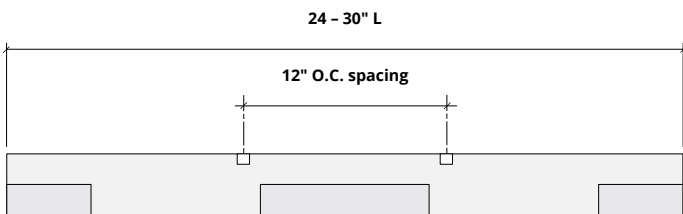
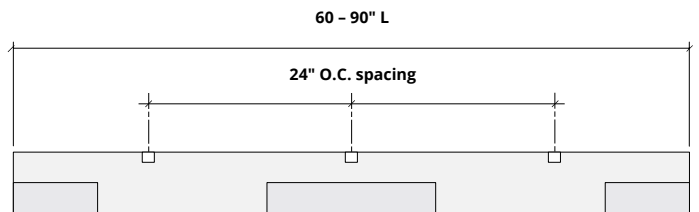
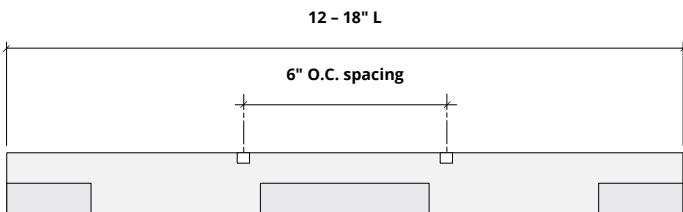


**24mm
thickness**



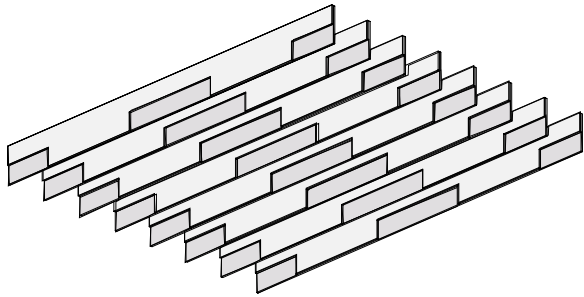
Hardware Spacing

12, 18" L	6" on center spacing
24, 30" L	12" on center spacing
36, 42, 48, 54" L	24" on center spacing
60, 66, 72, 78, 84, 90" L	24" on center spacing
96, 102, 108, 110" L	30" on center spacing

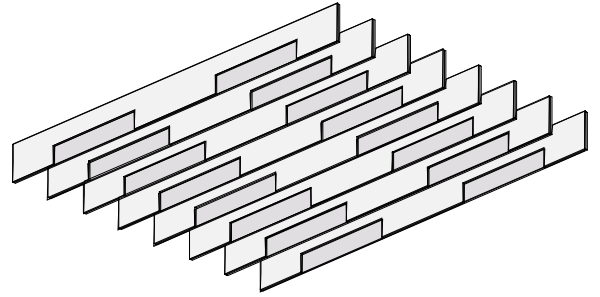


Recommended Layouts

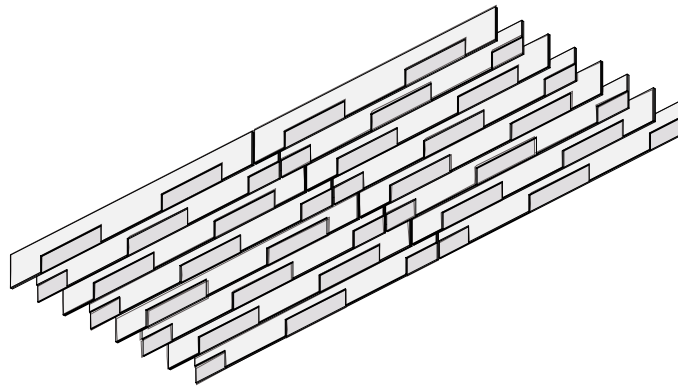
Layout 1 (100% GR1)



Layout 2 (100% GR2)

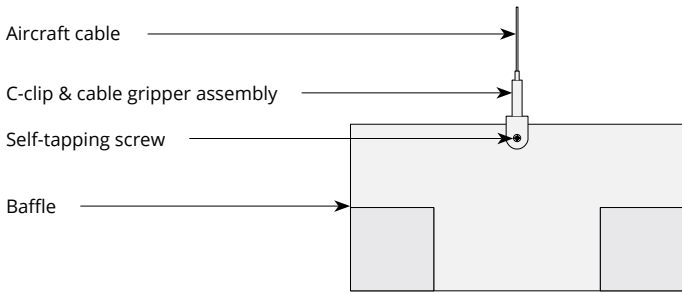


Layout 3 (50% GR1 & 50% GR2)

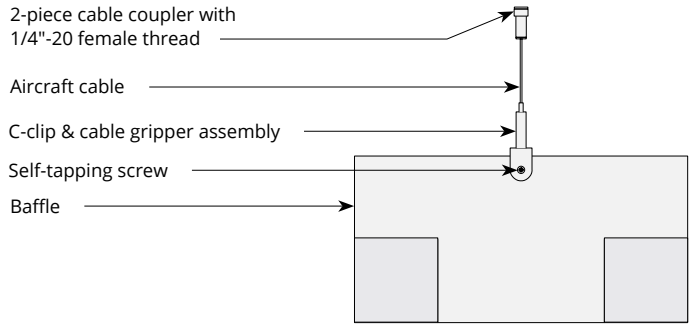


Mounting Methods

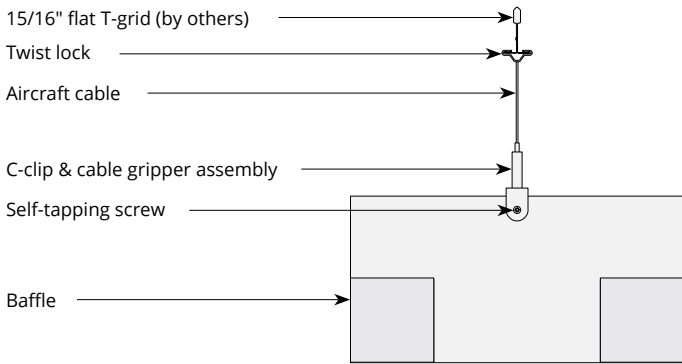
Cable



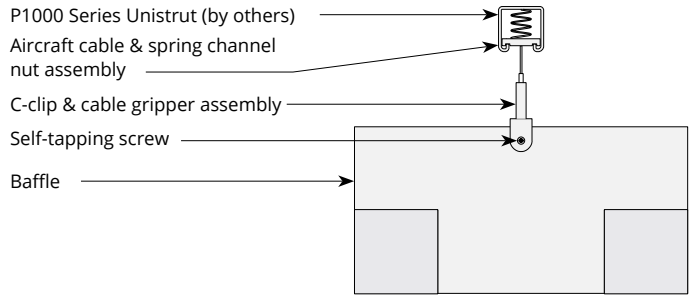
Cable to deck



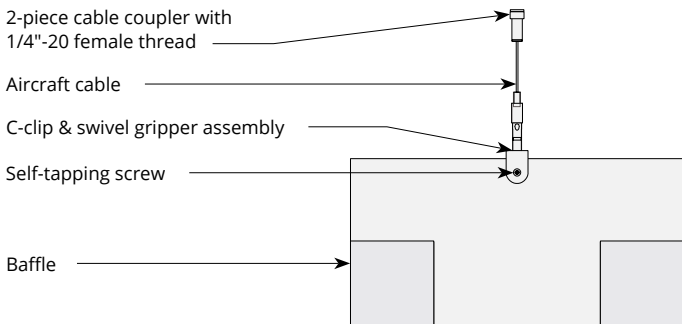
Cable to T-grid



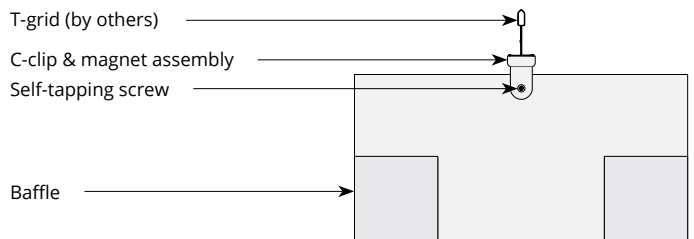
Cable to Unistrut



Swivel cable to deck

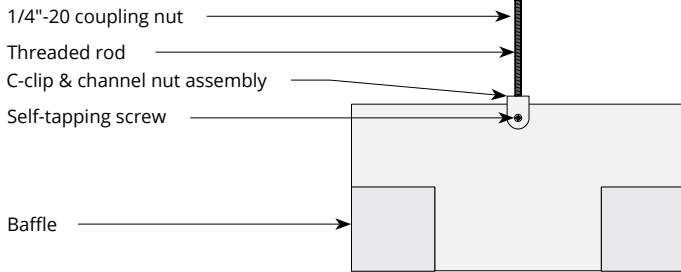


Magnet to T-grid

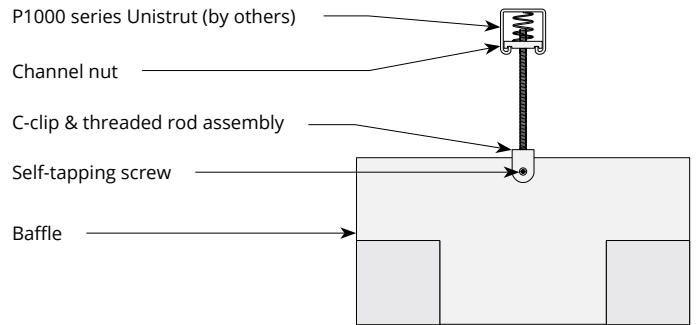


Mounting Methods cont'd.

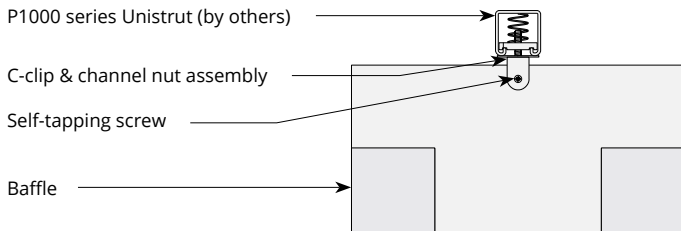
Threaded rod



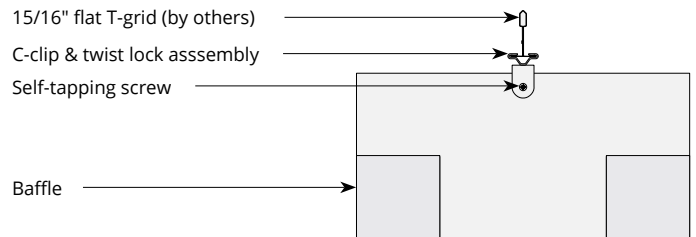
Threaded rod to Unistrut



Direct to Unistrut

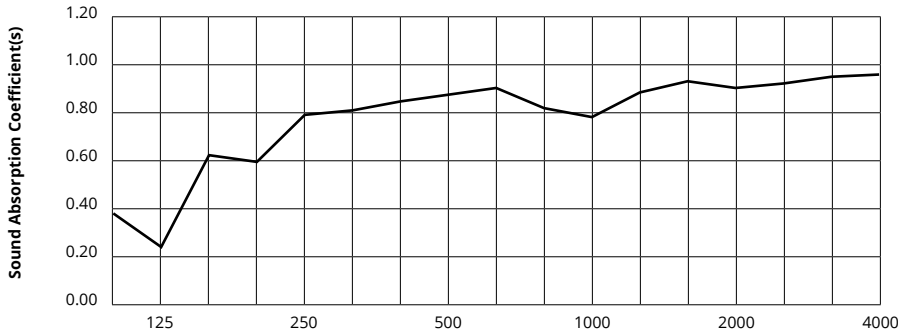


Twist lock to T-grid



Acoustic Performance

Test Method	ASTM C432-17
Rating Method	ISO 11654-2002
Test Results	NRC 0.60 SAA 0.55



Frequency f (Hz)	125	250	500	1000	2000	4000	NRC
24mm	0.02	0.57	0.41	0.58	0.87	0.85	0.60

What is a Noise Reduction Coefficient (NRC)?

You'll find the NRC rating in the specifications of all of our products. This acronym stands for Noise Reduction Coefficient, and is expressed as a single number, a rating that describes the degree to which acoustic products can absorb sound.

You can use NRC values to understand the overall performance of our acoustic wall and ceiling products. The higher the NRC, the better the product is at soaking up the sound.

Performance Indices: Noise Reduction Coefficient (NRC) results represent the absorption coefficients measured at the one third octave bands at 125, 250, 500, 1000, 2000 and 4000 Hz rounded to the nearest 0.05. Acoustic testing has been performed according to the methods mentioned above. Customization of installation of the product could alter the results. Sound Absorption Average (SAA) indicates the absorption coefficient average for the twelve one-third octave bands ranging between 200 and 2500 Hz.