



## Rectangle Ceiling Clouds

Premier Collection

Acoufelt ceiling clouds are a modern acoustic treatment designed to be suspended horizontally from a ceiling system, offering an increased surface area for sound absorption. As a standalone free-hanging unit with a large surface area, rectangle ceiling clouds provide offer targeted sound absorption in areas that may be acoustically problematic.

## Specifications

<b>Surface</b>	Ceiling
<b>Material</b>	FilaSorb™ polyester felt
<b>Thickness</b>	1", 24mm (±10%)
<b>Weight</b>	0.98 lb./ft <sup>2</sup> (±10%)
<b>Standard Sizes</b>	Width: 12" - 48" (6" increments) Length: 36" - 90" (6" increments)



Rectangle Ceiling Cloud in White

## Technical

<b>NRC Rating</b>	0.60
<b>Fire Test</b>	ASTM E84, Class A Flame spread index: 15 Smoke developed index: 200
<b>Water Sorption</b>	ASTM C1104-2019 (A Modified) Water sorbed by weight: 0.20% (based on a 12mm thick panel)
<b>Colorfastness</b>	ISO 105-B02, 6-7

## Details

<b>Lead Time</b>	3 - 6 weeks
<b>Origin</b>	Manufactured and assembled in the US
<b>Warranty</b>	Product: 20 years* Colorfastness: 20 years*

\* Conditions apply

## Environmental

<b>Recycled Content</b>	Minimum 60%
<b>Energy</b>	Generated using 40% solar energy
<b>Indoor Air Quality</b>	VOC less than/equal to 0.5mg/m <sup>3</sup>
<b>Recyclable</b>	100%*
<b>Certifications</b>	Environmental Product Declaration Declare Certification - LBC Red List Free (third-party verified) SCS Global Indoor Advantage Gold

\* PET is recyclable through participating partners.



Call **800.966.8557** with questions or visit **acoufelt.com** for more product information, downloads, and colorways.

# Colorways

## PREMIER



White  
WH12



Almond  
AL55



Celery  
CE65



Sencha  
SE58



Metal  
ME03



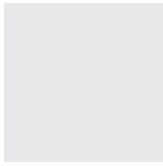
Flamingo  
FL61



Quartz  
QU67



Turmeric  
TU60



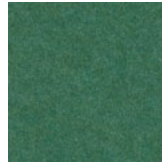
Platinum  
PL04



Pearl  
PE21



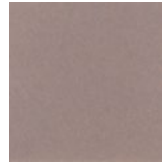
Pistachio  
PI25



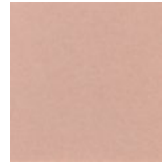
Thistle  
TH28



Stonewash  
ST72



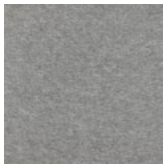
Amethyst  
AM69



Valentine  
VA70



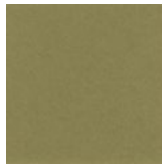
Wheat  
WH68



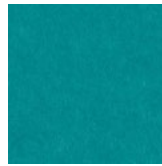
Grey  
GR02



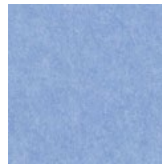
Ivory  
IV11



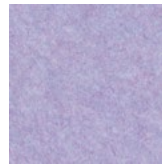
Eucalyptus  
EU71



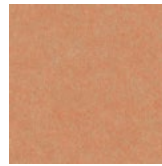
Peacock  
PE20



Periwinkle  
PE23



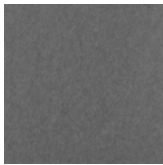
Lilac  
LI13



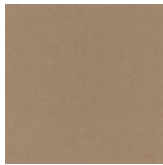
Peach  
PE19



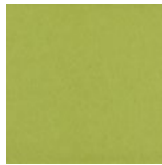
Popcorn  
PO26



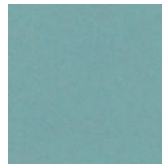
Slate  
SL27



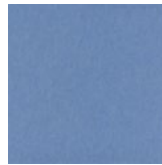
Umber  
UM54



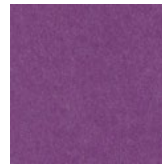
Wasabi  
WA29



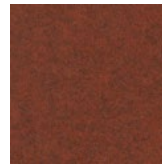
Sea Salt  
SE57



Marine  
MA15



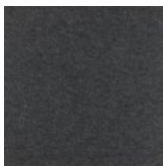
Berry  
BE06



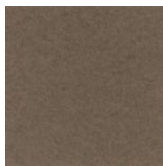
Peppercorn  
PE22



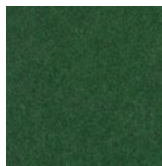
Carrot  
CA08



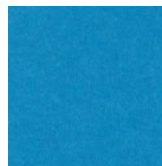
Charcoal  
CH01



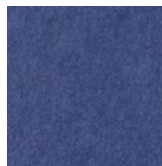
Walnut  
WA56



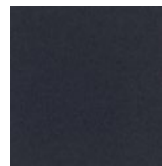
Oregano  
OR18



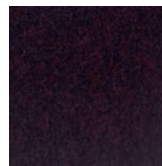
Azure  
AZ05



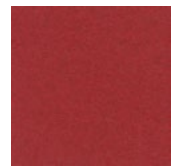
Iris  
IR10



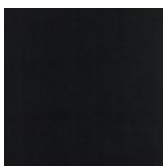
Flint  
FL64



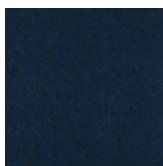
Shiraz  
SH63



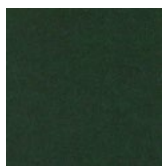
Currant  
CU59



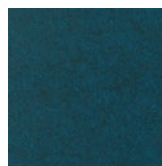
Piano Black  
PI24



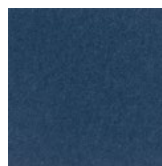
Midnight  
MI16



Kale  
KA12



Denim  
DE09



Granite  
GR62

Order samples at [acoufelt.com/colorways](https://acoufelt.com/colorways)

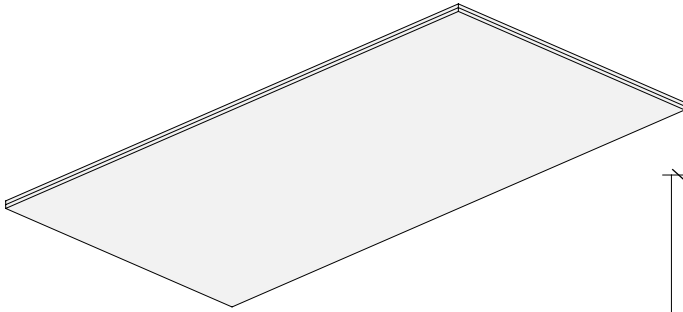


Call 800.966.8557 with questions or visit [acoufelt.com](https://acoufelt.com) for more product information, downloads, and colorways.

# Sizes

<b>Standard Sizes</b>	Width: 12" - 48" (6" increments) Length: 36" - 90" (6" increments)
<b>Thickness</b>	1", 24mm ( $\pm 10\%$ )

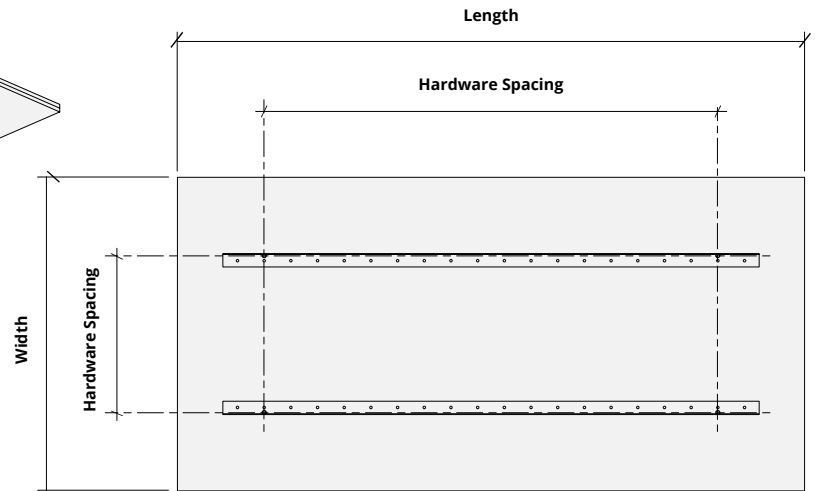
## Perspective



24mm  
thickness



## Plan

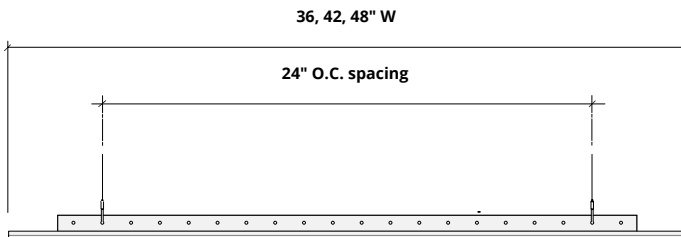
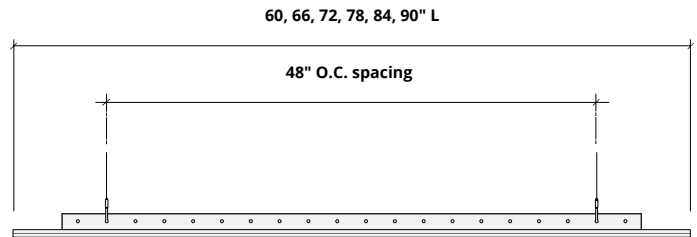
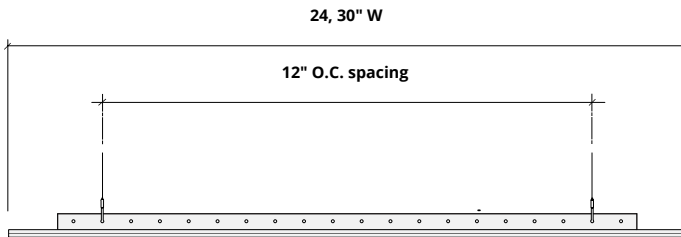
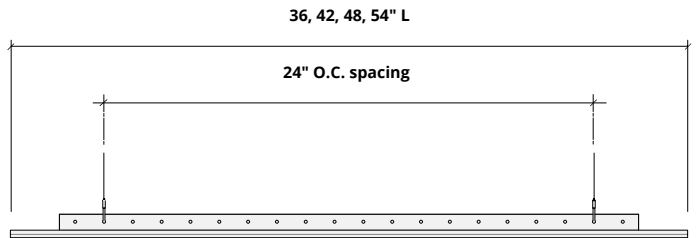
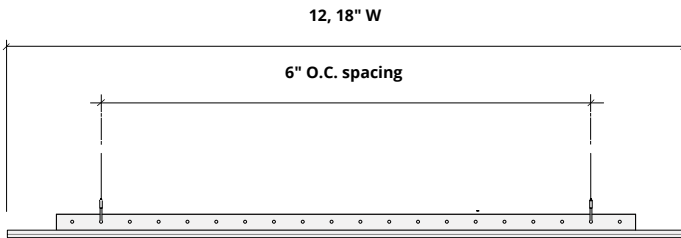


*Rounded corners available*



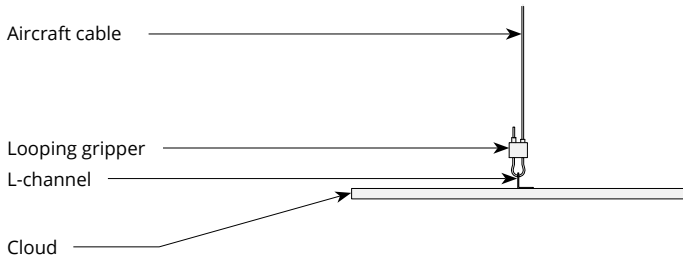
# Hardware Spacing

<b>12, 18" W</b>	6" on center spacing
<b>24, 30" W</b>	12" on center spacing
<b>36, 42, 48" W</b>	24" on center spacing
<b>36, 42, 48, 54" L</b>	24" on center spacing
<b>60, 66, 72, 78, 84, 90" L</b>	48" on center spacing

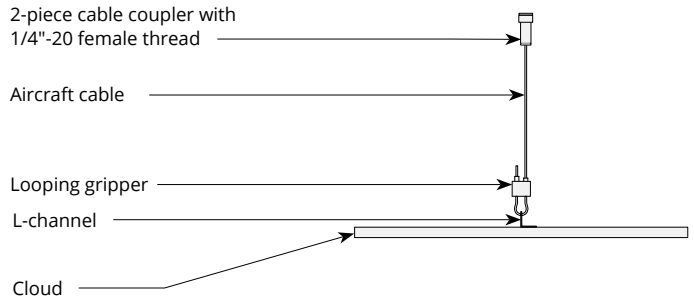


# Mounting Methods

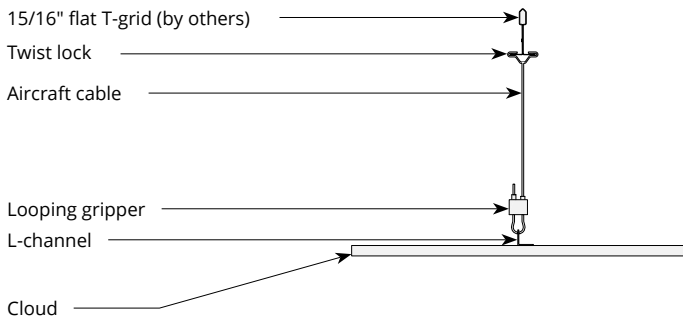
## Cable



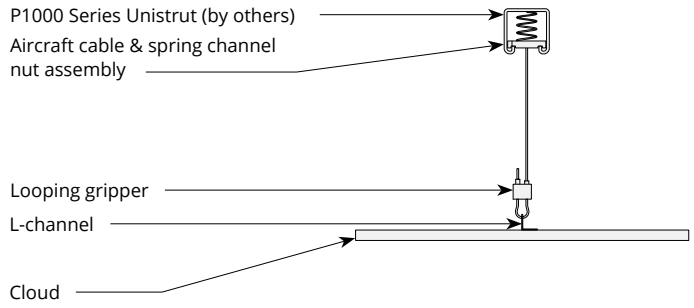
## Cable to deck



## Cable to T-grid

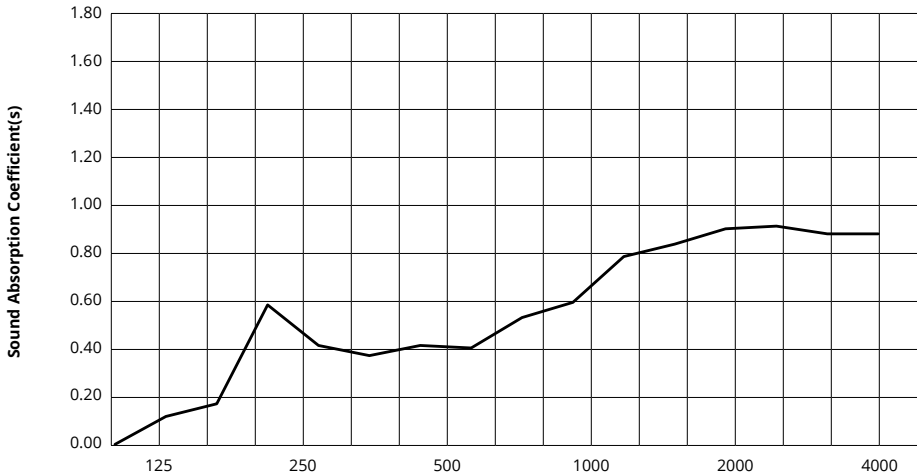


## Cable to Unistrut



# Acoustic Performance

<b>Test Method</b>	ISO 354-2006
<b>Install Method</b>	E200, E400
<b>Rating Method</b>	ISO 11654-2002
<b>Test Results</b>	NRC 0.60



Frequency f (Hz)	125	250	500	1000	2000	4000	NRC
24mm	0.02	0.57	0.41	0.58	0.87	0.85	0.60

## What is a Noise Reduction Coefficient (NRC)?

You'll find the NRC rating in the specifications of all of our products. This acronym stands for Noise Reduction Coefficient, and is expressed as a single number, a rating that describes the degree to which acoustic products can absorb sound.

You can use NRC values to understand the overall performance of our acoustic wall and ceiling products. The higher the NRC, the better the product is at soaking up the sound.

*Performance Indices: Noise Reduction Coefficient (NRC) results represent the absorption coefficients measured at the one third octave bands at 125, 250, 500, 1000, 2000 and 4000 Hz rounded to the nearest 0.05. Acoustic testing has been performed according to the methods mentioned above. Customization of installation of the product could alter the results. Sound Absorption Average (SAA) indicates the absorption coefficient average for the twelve one-third octave bands ranging between 200 and 2500 Hz.*