



Circle Ceiling Clouds

Premier Collection

Acoufelt ceiling clouds are a modern acoustic treatment designed to be suspended horizontally from a ceiling system, offering an increased surface area for sound absorption. As a standalone free-hanging unit with a large surface area, circle ceiling clouds offer targeted sound absorption in areas that may be acoustically problematic.

Specifications

Surface	Ceiling
Material	FilaSorb™ polyester felt
Thickness	1", 24mm (±10%)
Weight	0.98 lb./ft ² (±10%)
Standard Sizes	24", 30", 36", 42", 48" diameter



Circle Ceiling Cloud in Kale

Technical

NRC Rating	0.60
Fire Test	ASTM E84, Class A Flame spread index: 15 Smoke developed index: 200
Water Sorption	ASTM C1104-2019 (A Modified) Water sorbed by weight: 0.20% (based on a 12mm thick panel)
Colorfastness	ISO 105-B02, 6-7

Details

Lead Time	3 – 6 weeks
Origin	Manufactured and assembled in the US
Warranty	Product: 20 years* Colorfastness: 20 years*

* Conditions apply

Environmental

Recycled Content	Minimum 60%
Energy	Generated using 40% solar energy
Indoor Air Quality	VOC less than/equal to 0.5mg/m ³
Recyclable	100%*
Certifications	Environmental Product Declaration Declare Certification - LBC Red List Free (third-party verified) SCS Global Indoor Advantage Gold

* PET is recyclable through participating partners.

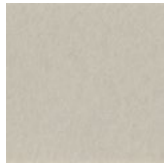


Colorways

PREMIER



White
WH12



Almond
AL55



Celery
CE65



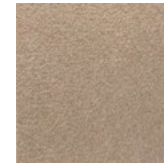
Sencha
SE58



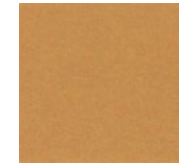
Metal
ME03



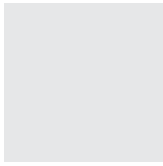
Flamingo
FL61



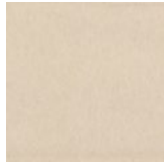
Quartz
QU67



Turmeric
TU60



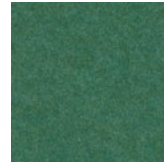
Platinum
PL04



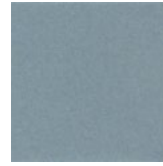
Pearl
PE21



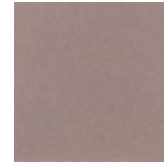
Pistachio
PI25



Thistle
TH28



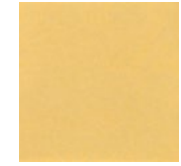
Stonewash
ST72



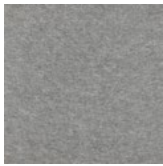
Amethyst
AM69



Valentine
VA70



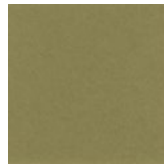
Wheat
WH68



Grey
GR02



Ivory
IV11



Eucalyptus
EU71



Peacock
PE20



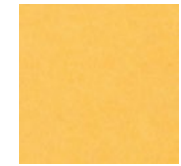
Periwinkle
PE23



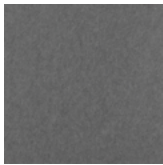
Lilac
LI13



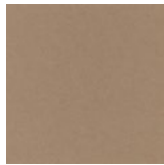
Peach
PE19



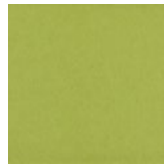
Popcorn
PO26



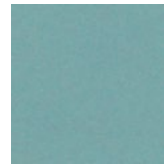
Slate
SL27



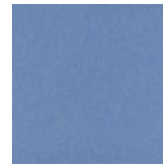
Umber
UM54



Wasabi
WA29



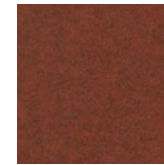
Sea Salt
SE57



Marine
MA15



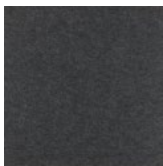
Berry
BE06



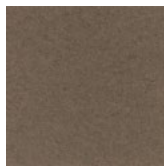
Peppercorn
PE22



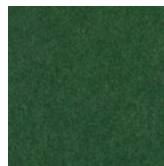
Carrot
CA08



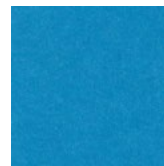
Charcoal
CH01



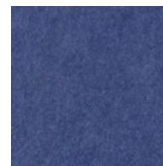
Walnut
WA56



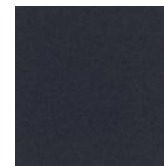
Oregano
OR18



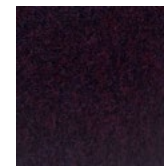
Azure
AZ05



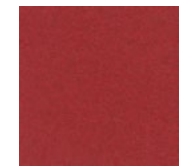
Iris
IR10



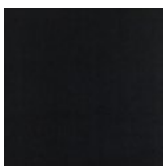
Flint
FL64



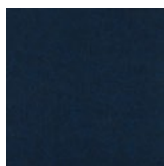
Shiraz
SH63



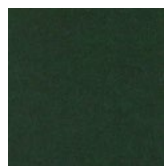
Currant
CU59



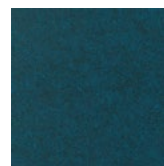
Piano Black
PI24



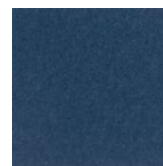
Midnight
MI16



Kale
KA12



Denim
DE09



Granite
GR62

Order samples at acoufelt.com/colorways

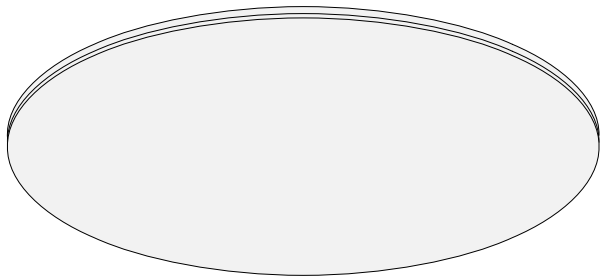


Call 800.966.8557 with questions or visit acoufelt.com for more product information, downloads, and colorways.

Sizes

Standard Sizes	24", 30", 36", 42", 48" diameter
Thickness	1", 24mm ($\pm 10\%$)

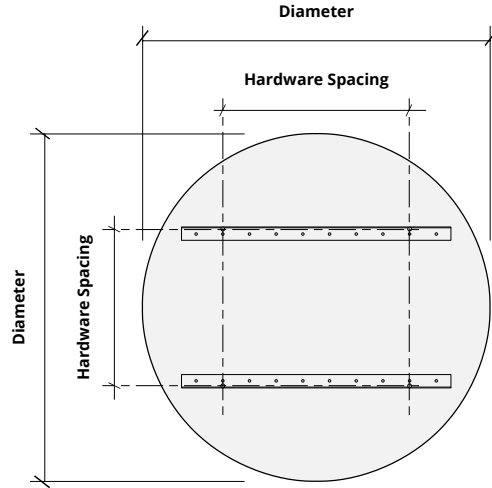
Perspective



24mm
thickness

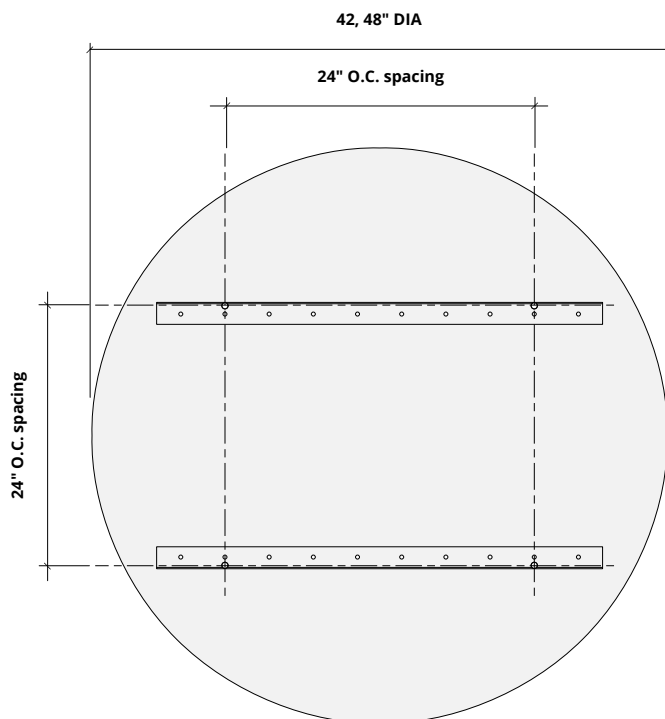
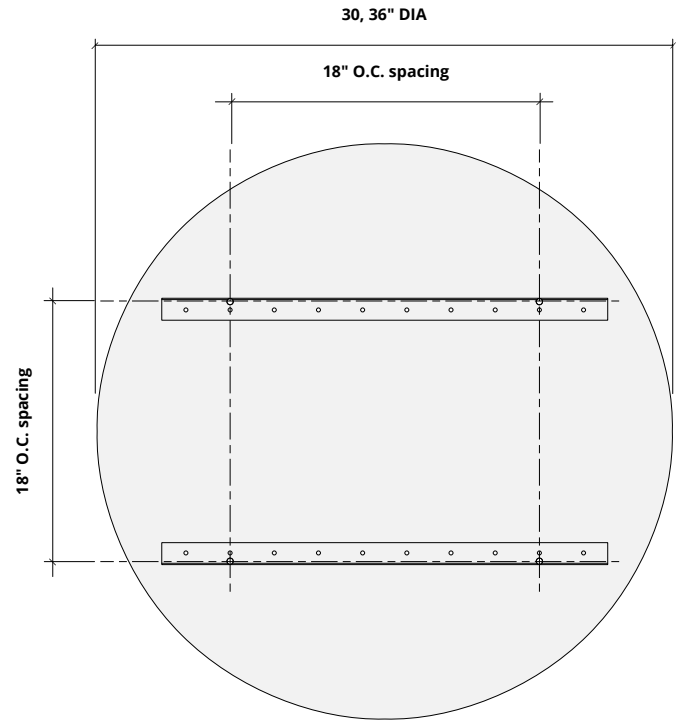
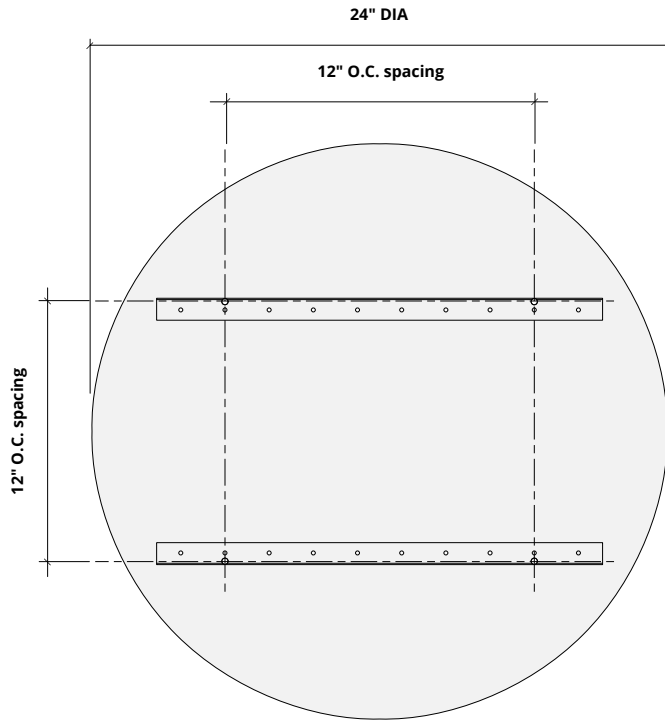


Plan



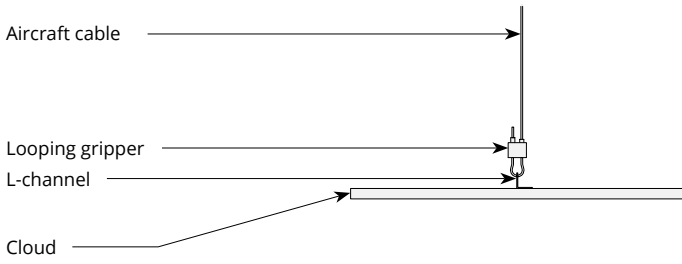
Hardware Spacing

24" DIA	12" on center spacing
30, 36" DIA	18" on center spacing
42, 48" DIA	24" on center spacing

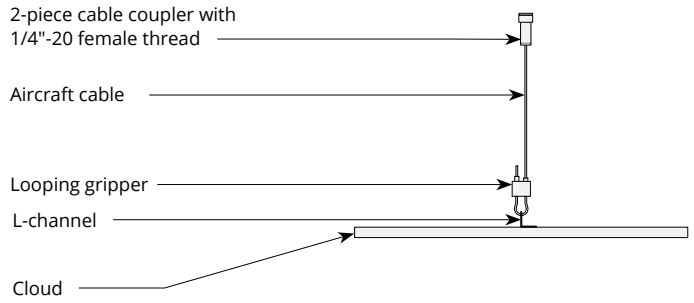


Mounting Methods

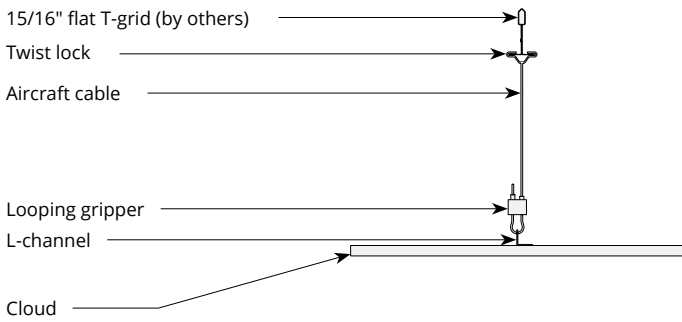
Cable



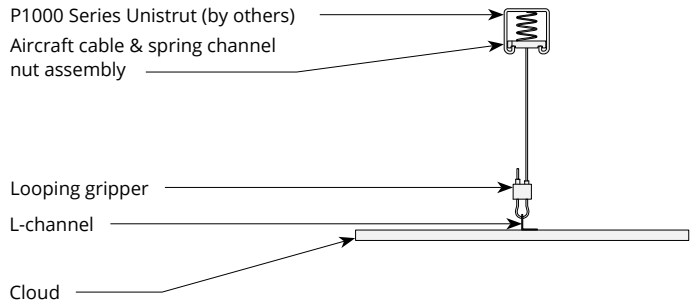
Cable to deck



Cable to T-grid

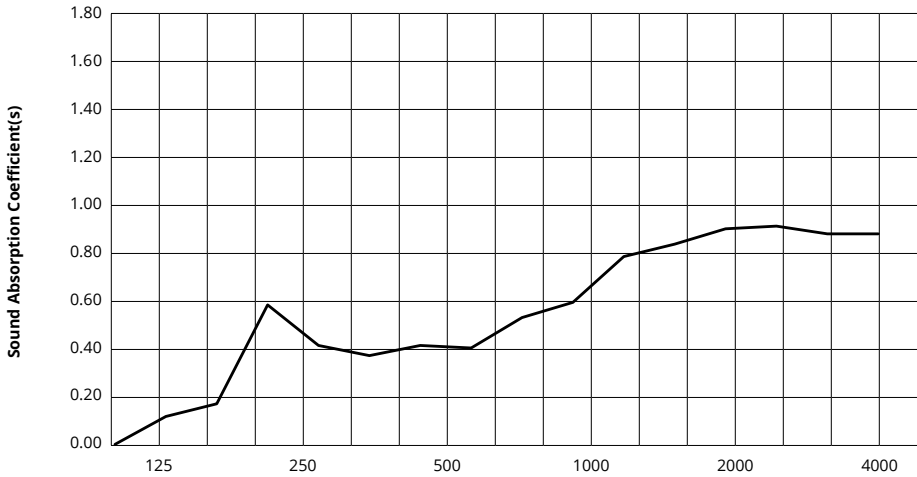


Cable to Unistrut



Acoustic Performance

Test Method	ISO 354-2006
Install Method	E200, E400
Rating Method	ISO 11654-2002
Test Results	NRC 0.60



Frequency f (Hz)	125	250	500	1000	2000	4000	NRC
24mm	0.02	0.57	0.41	0.58	0.87	0.85	0.60

What is a Noise Reduction Coefficient (NRC)?

You'll find the NRC rating in the specifications of all of our products. This acronym stands for Noise Reduction Coefficient, and is expressed as a single number, a rating that describes the degree to which acoustic products can absorb sound.

You can use NRC values to understand the overall performance of our acoustic wall and ceiling products. The higher the NRC, the better the product is at soaking up the sound.

Performance Indices: Noise Reduction Coefficient (NRC) results represent the absorption coefficients measured at the one third octave bands at 125, 250, 500, 1000, 2000 and 4000 Hz rounded to the nearest 0.05. Acoustic testing has been performed according to the methods mentioned above. Customization of installation of the product could alter the results. Sound Absorption Average (SAA) indicates the absorption coefficient average for the twelve one-third octave bands ranging between 200 and 2500 Hz.