



# Canyon

QuietBack™ Carpet Tile

acoufelt  
making quiet

# Product Detail

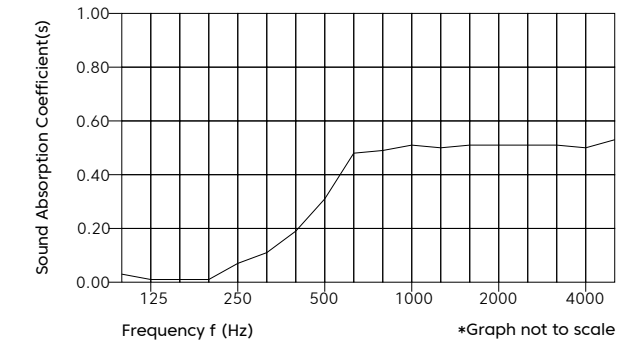
Product	Canyon Carpet Tile
Surface	Floor
Composition	100% Solution dyed nylon
Material	QuietBack™
Style	Multi-level textured loop pile
Content	QuietBack™ => 80% recycled PET content
Dimension	9.8" x 39.4"
Thickness	8mm +/- 1mm   0.31" +/- 0.04"

# Technical Data

Dimensional Stability	BS EN 986
Electrostatic Propensity	AATCC 134, ≤ 1.0 KV
Light Fastness	ISO 105 B02, min 6
Fire Test Method Number	AS/ISO 9239.1-2003
Critical Radiant Flux	Mean result 3.2kW/m <sup>2</sup>
Smoke Dev Rate	Mean result 209% min
	ASTM E648 Class 1
Critical Radiant Flux	0.54W/cm <sup>2</sup>
Standard Deviation	0.01W/cm <sup>2</sup>

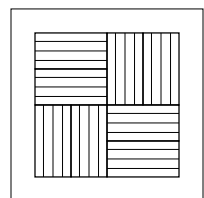
# Acoustic Performance

Sound Absorption ASTM C423-09a NRC 0.35

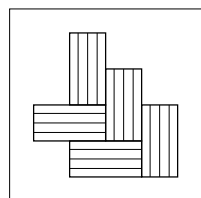


Frequency f (Hz)	125	250	500	1000	2000	4000	NRC
$\alpha_s$	0.01	0.07	0.31	0.51	0.51	0.50	0.35

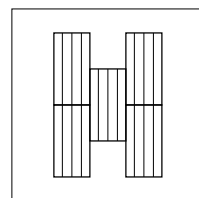
# Installation Method



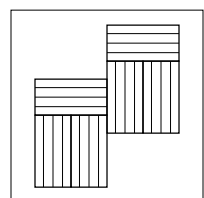
Quarter Turn



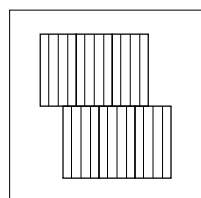
Herringbone



Vertical



Plank Half-Lap

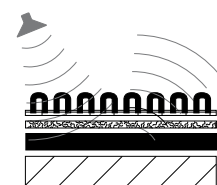


Horizontal Brick

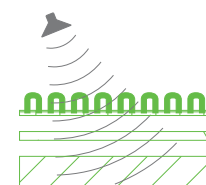
# Guarantees

Lead Time	Ships in 4-6 weeks
Wear Warranty	20 Years*
Castor Chair Proof	20 Years*
Anti-Static	Lifetime*
Colorfast	20 Years*
Classification	Commercial extra heavy duty

\* conditions apply



Regular hard or felt backed tile reflects more sound.



Carpet tile featuring QuietBack™ absorbs more sound.

# Environmental Attributes

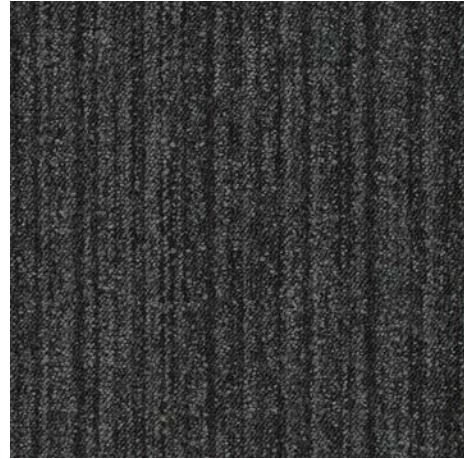
- Declare Certification
- LCB Red List Free
- Low VOC
- Aligns With Building Standards



Declare.

# Colorways

---



Colorado  
CA01



Coyote  
CA03



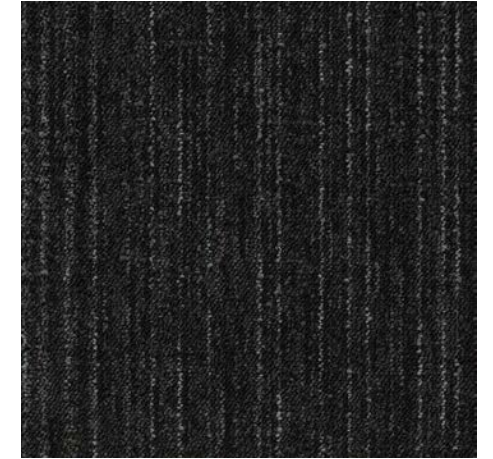
Oasis  
CA04



Cocklebur  
CA05



Limestone  
CA06



Mojave  
CA07