

Shapes Wall Tiles

Premier Collection

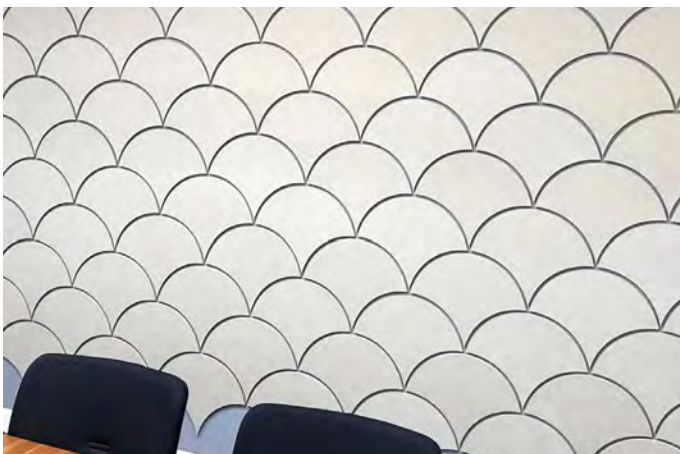
Soundscaping your space with acoustic wall tiles lets you play with color, tone, and patterns while building felt wall mosaics. Make your own designs from our collection of geometric and organic shapes offered in our broad color palette.

Specifications

Surface	Wall
Material	Filasorb™ polyester felt
Thickness	1/2", 12mm (±10%) 1", 24mm (±10%)
Weight	12mm, 0.49 lb./ft ² (±10%) 24mm, 0.98 lb./ft ² (±10%)
Standard Sizes	6, 9, 10.39, 12, 15.59, 16, 18, 20.78, 24, 32" W 6, 9, 12, 16, 18, 24" H <i>Sizes based on shape</i>



Hexagon in Grey, Metal, Platinum and White



Scale in Platinum

Technical

NRC Rating	12mm, 0.45 24mm, 0.60
Fire Test	ASTM E84, Class A Flame spread index: 15 Smoke developed index: 200
Colorfastness	ISO 105-B02, 6-7

Details

Lead Time	3 - 6 weeks
Origin	Manufactured and assembled in the US
Warranty	Product: 20 years* Colorfastness: 20 years*

* Conditions apply

Environmental

Recycled Content	Minimum 60%
Energy	Generated using 40% solar energy
Indoor Air Quality	VOC less than/equal to 0.5mg/m ³
Recyclable	100%*
Certifications	Environmental Product Declaration Declare Certification - LBC Red List Free (third-party verified) SCS Global Indoor Advantage Gold

* PET is recyclable through participating partners.



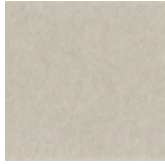
Call **800.966.8557** with questions or visit **acoufelt.com** for more product information, downloads, and colorways.

Colorways

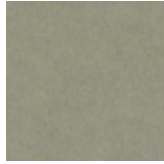
PREMIER



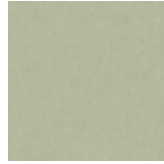
White
WH12



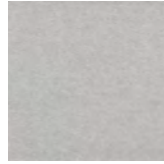
Almond
AL55



Pistachio
PI25



Celery
CE65



Metal
ME03



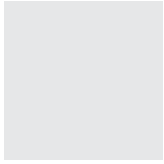
Flamingo
FL61



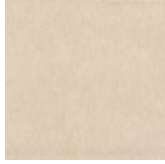
Quartz
QU67



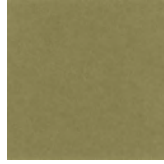
Turmeric
TU60



Platinum
PL04



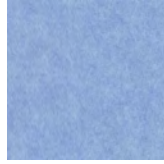
Pearl
PE21



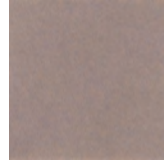
Eucalyptus
EU71



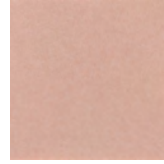
Sencha
SE58



Periwinkle
PE23



Amethyst
AM69



Valentine
VA70



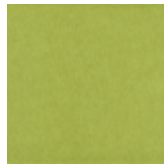
Wheat
WH68



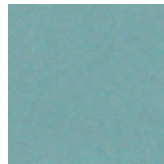
Grey
GR02



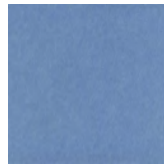
Ivory
IV11



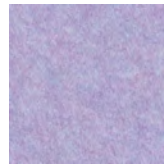
Wasabi
WA29



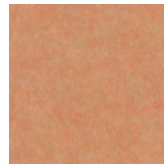
Sea Salt
SE57



Marine
MA15



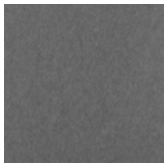
Lilac
LI13



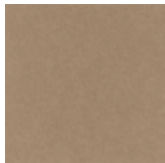
Peach
PE19



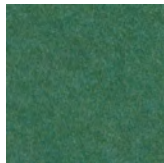
Popcorn
PO26



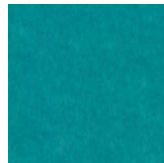
Slate
SL27



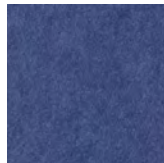
Umber
UM54



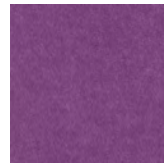
Thistle
TH28



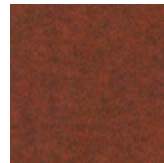
Peacock
PE20



Iris
IR10



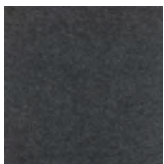
Berry
BE06



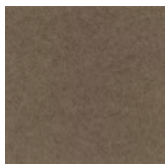
Peppercorn
PE22



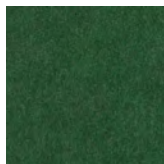
Carrot
CA08



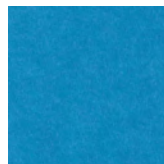
Charcoal
CH01



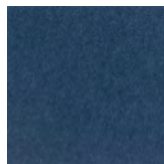
Walnut
WA56



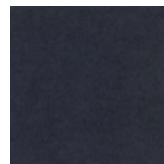
Oregano
OR18



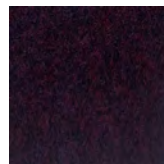
Azure
AZ05



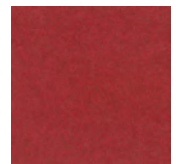
Granite
GR62



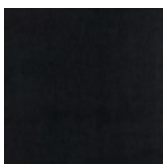
Flint
FL64



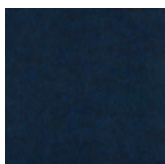
Shiraz
SH63



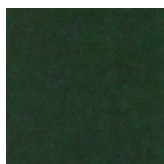
Currant
CU59



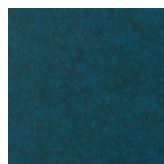
Piano Black
PI24



Midnight
MI16



Kale
KA12



Denim
DE09

Order samples at acoufelt.com/colorways



Call 800.966.8557 with questions or visit acoufelt.com for more product information, downloads, and colorways.

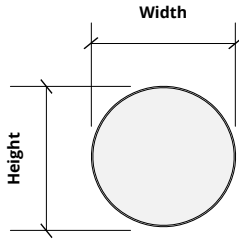
Sizes

Standard Heights 6, 9, 10.39, 12, 15.59, 16, 18, 20.78, 24, 32" W
Sizes based on shape. See below.

Thickness 1/2", 12mm ($\pm 10\%$)
 1", 14mm ($\pm 10\%$)

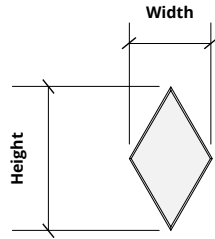
Standard Widths 6, 9, 12, 16, 18, 24" H
Sizes based on shape. See below.

Circle



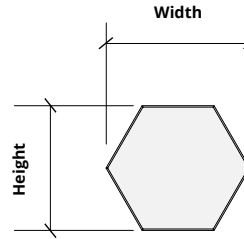
Small 12" W x 12" H
Medium 18" W x 18" H
Large 24" W x 24" H

Diamond



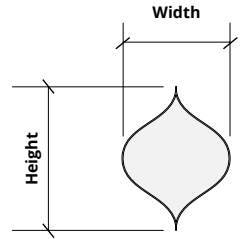
Small 6" W x 10.39" H
Medium 9" W x 15.59" H
Large 12" W x 20.78" H

Hexagon



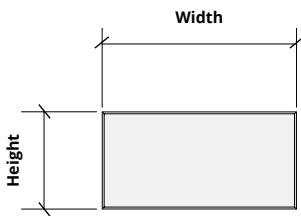
Small 12" W x 10.39" H
Medium 18" W x 15.59" H
Large 24" W x 20.78" H

Ogee



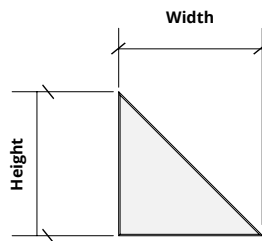
Small 12" W x 16" H
Medium 18" W x 24" H
Large 24" W x 32" H

Rectangle



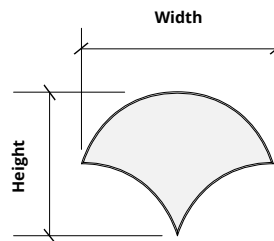
Small 12" W x 6" H
Medium 18" W x 9" H
Large 24" W x 12" H

Right Triangle



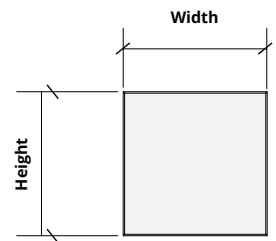
Small 12" W x 12" H
Medium 18" W x 18" H
Large 24" W x 24" H

Scale



Small 16" W x 12" H
Medium 24" W x 18" H
Large 32" W x 24" H

Square



Small 12" W x 12" H
Medium 18" W x 18" H
Large 24" W x 24" H

12mm
thickness

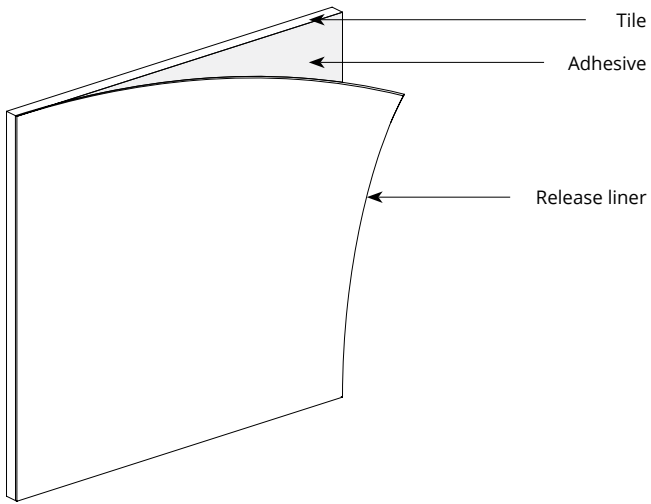


24mm
thickness

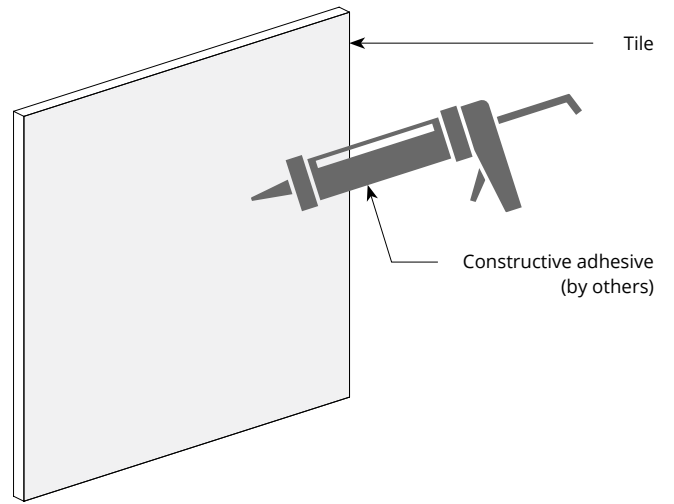


Mounting Methods

Adhesive backing

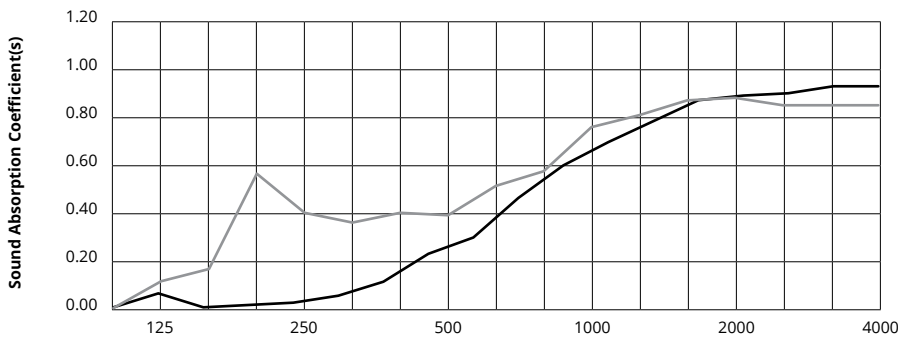


Construction adhesive



Acoustic Performance

Test Method	ISO 354-2006
Install Method	Type A
Mounting Method	No air gap
Rating Method	ISO 11654-1997
Test Results	<p>12mm</p> <p>NRC 0.45</p> <p>SAA 0.43</p> <p>24mm</p> <p>NRC 0.60</p> <p>SAA 0.55</p>



	Frequency f (Hz)	125	250	500	1000	2000	4000	NRC
	12mm	0.06	0.02	0.23	0.61	0.89	0.95	0.45
	24mm	0.02	0.57	0.41	0.58	0.87	0.85	0.60

What is a Noise Reduction Coefficient (NRC)?

You'll find the NRC rating in the specifications of all of our products. This acronym stands for Noise Reduction Coefficient, and is expressed as a single number, a rating that describes the degree to which acoustic products can absorb sound.

You can use NRC values to understand the overall performance of our acoustic wall and ceiling products. The higher the NRC, the better the product is at soaking up the sound.

Performance Indices: Noise Reduction Coefficient (NRC) results represent the absorption coefficients measured at the one third octave bands at 125, 250, 500, 1000, 2000 and 4000 Hz rounded to the nearest 0.05. Acoustic testing has been performed according to the methods mentioned above. Customization of installation of the product could alter the results. Sound Absorption Average (SAA) indicates the absorption coefficient average for the twelve one-third octave bands ranging between 200 and 2500 Hz.