



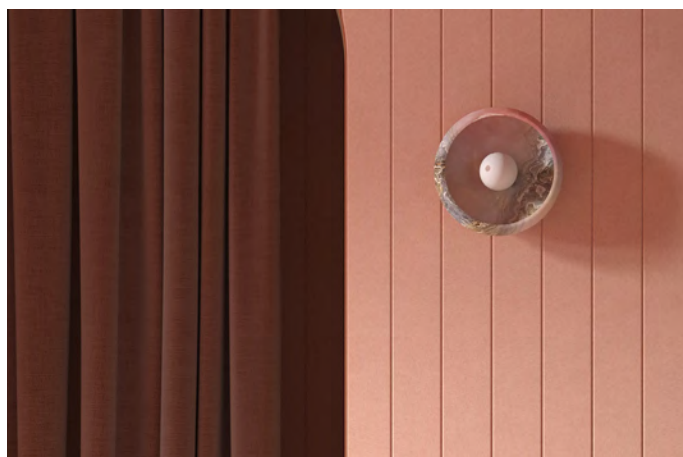
Fracture Wall Panels

Premium Collection

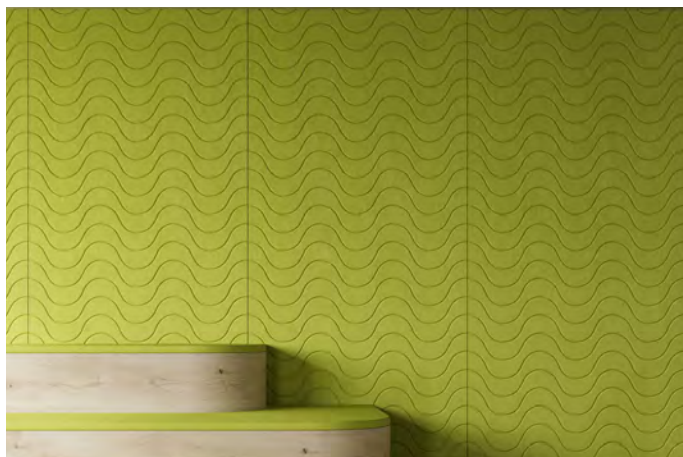
Fracture panels are an acoustic wall treatment precision carved with a beveled groove into a series of directional linework designs. Install these panels together to create spectacular, full-scale patterns of rich color, depth, shadow, and texture.

Specifications

Surface	Wall
Material	Filasorb™ polyester felt
Thickness	1/2", 12mm (±10%) 1", 24mm (±10%)
Weight	12mm, 0.49 lb./ft ² (±10%) 24mm, 0.98 lb./ft ² (±10%)
Standard Sizes	48" W x 108" H <i>Custom sizes available</i>



Fracture Wall Panel with Finline Pattern in Flamingo



Fracture Wall Panel with Wavelength Pattern in Wasabi

Technical

NRC Rating	12mm, 0.45, no air gap 12mm 0.54, 12mm air gap 12mm 0.64, 20mm air gap 24mm, 0.60, no air gap
Fire Test	ASTM E84, Class A Flame spread index: 15 Smoke developed index: 200
Colorfastness	ISO 105-B02, 6-7

Details

Lead Time	3 - 6 weeks
Origin	Manufactured and assembled in the US
Warranty	Product: 20 years* Colorfastness: 20 years*

* Conditions apply

Environmental

Recycled Content	Minimum 60%
Energy	Generated using 40% solar energy
Indoor Air Quality	VOC less than/equal to 0.5mg/m3
Recyclable	100%*
Certifications	Environmental Product Declaration Declare Certification - LBC Red List Free (third-party verified) SCS Global Indoor Advantage Gold

* PET is recyclable through participating partners.



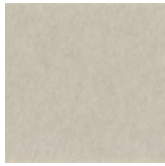
Call **800.966.8557** with questions or visit **acoufelt.com** for more product information, downloads, and colorways.

Colorways

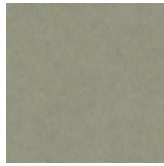
PREMIUM



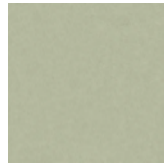
White
WH12



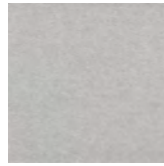
Almond
AL55



Pistachio
PI25



Celery
CE65



Metal
ME03



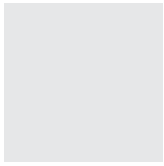
Flamingo
FL61



Quartz
QU67



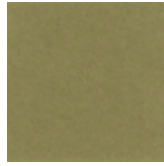
Turmeric
TU60



Platinum
PL04



Pearl
PE21



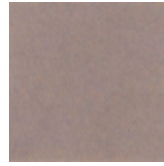
Eucalyptus
EU71



Sencha
SE58



Periwinkle
PE23



Amethyst
AM69



Valentine
VA70



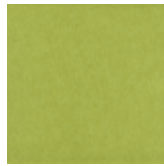
Wheat
WH68



Grey
GR02



Ivory
IV11



Wasabi
WA29



Sea Salt
SE57



Marine
MA15



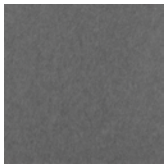
Lilac
LI13



Peach
PE19



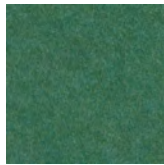
Popcorn
PO26



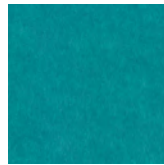
Slate
SL27



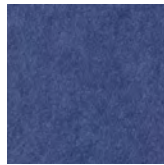
Umber
UM54



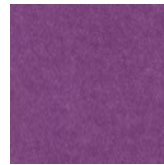
Thistle
TH28



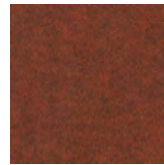
Peacock
PE20



Iris
IR10



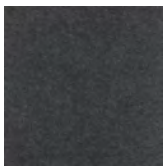
Berry
BE06



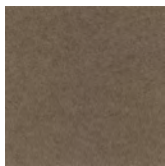
Peppercorn
PE22



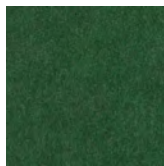
Carrot
CA08



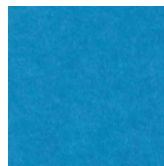
Charcoal
CH01



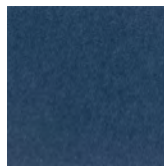
Walnut
WA56



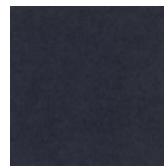
Oregano
OR18



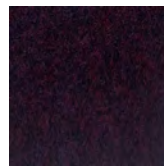
Azure
AZ05



Granite
GR62



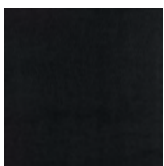
Flint
FL64



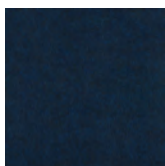
Shiraz
SH63



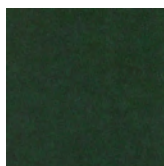
Currant
CU59



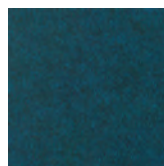
Piano Black
PI24



Midnight
MI16



Kale
KA12



Denim
DE09

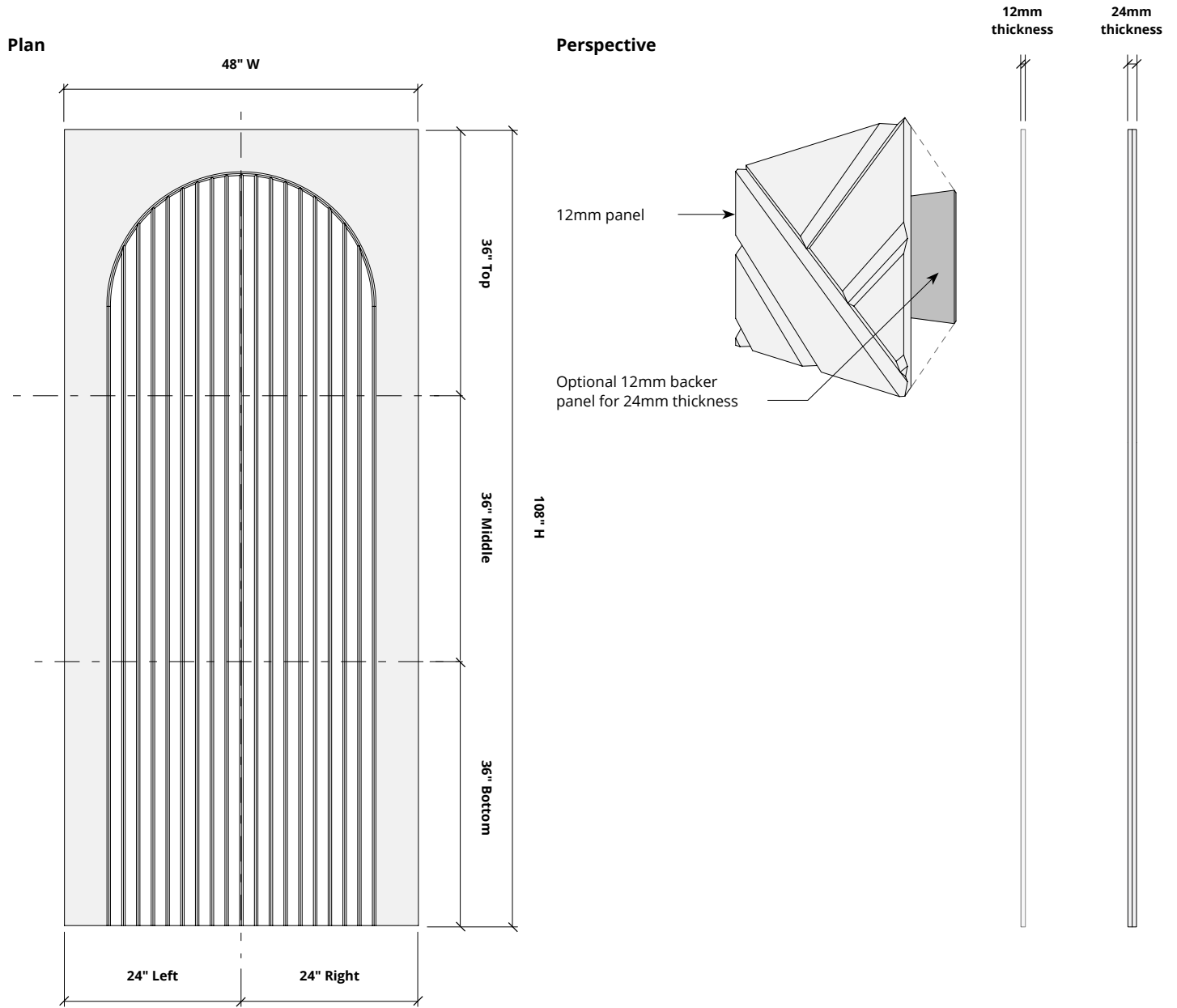
Order samples at acoufelt.com/colorways



Call 800.966.8557 with questions or visit acoufelt.com for more product information, downloads, and colorways.

Sizes

Standard Sizes	48" W x 108" H <i>Custom sizes available</i>
Thickness	1/2", 12mm (±10%) 1", 24mm (±10%)



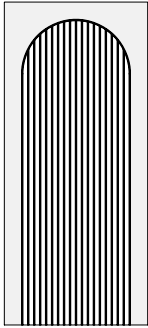
* Product available as full panels or as sections of a panel as filler pieces.
Choose any of the standard height or segments (i.e. bottom right, middle left, etc) to fill the space as needed.

How to Specify

1. Choose Panel Pattern

2. Choose Colorways

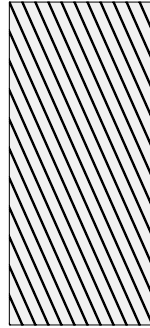
Select desired panel pattern. See recommended layouts for larger designs.



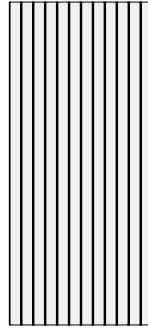
ARCH



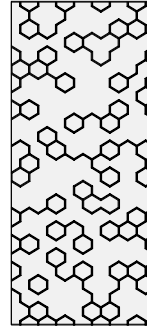
CHEVRON



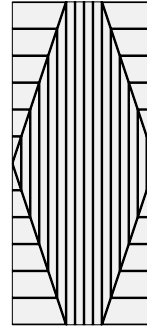
DIAGONAL



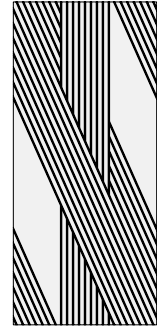
FINELINE



FORMULA



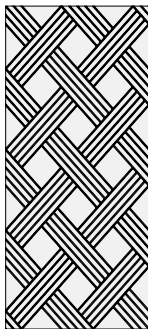
HARLEQUIN



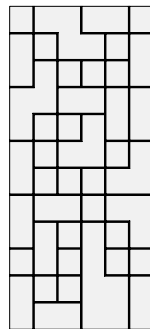
INTERSECT



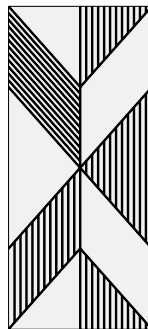
KNIT



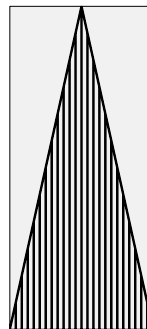
LATTICE



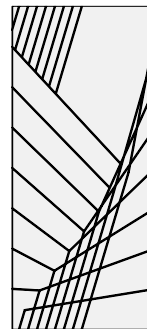
MAZE



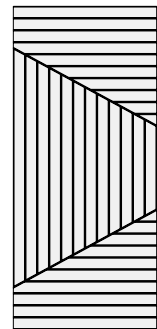
METROPOLIS



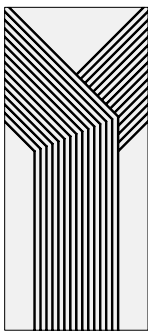
PENNANT



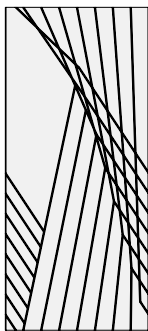
PRISM



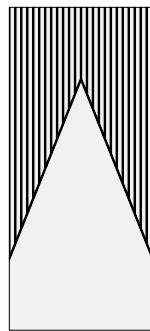
PULSE



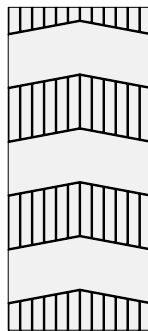
ROWHOUSE



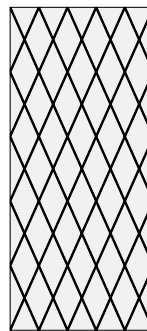
SPIROGRAPH



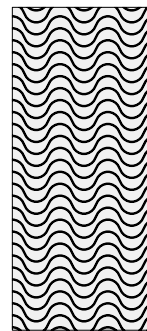
SUMMIT



TRACK



TRELLIS



WAVELENGTH

1. Choose Panel Pattern

2. Choose Colorways

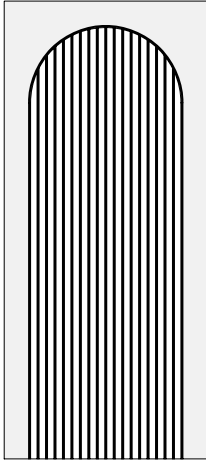
See colorways on page 3.



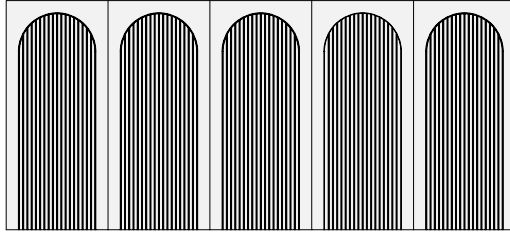
Call **800.966.8557** with questions or visit **acoufelt.com** for more product information, downloads, and colorways.

Recommended Layouts

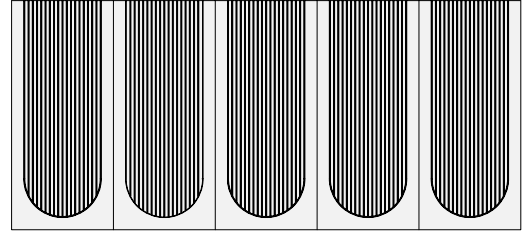
Arch



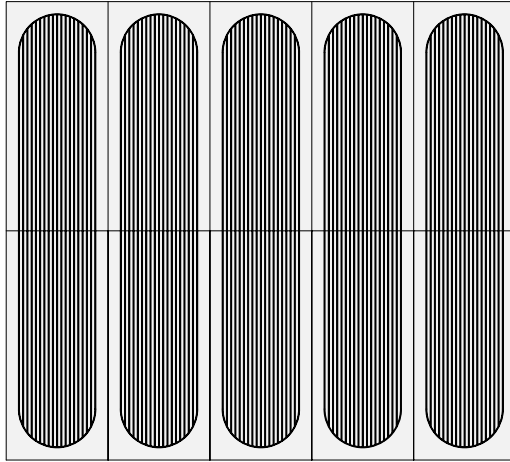
Layout 1



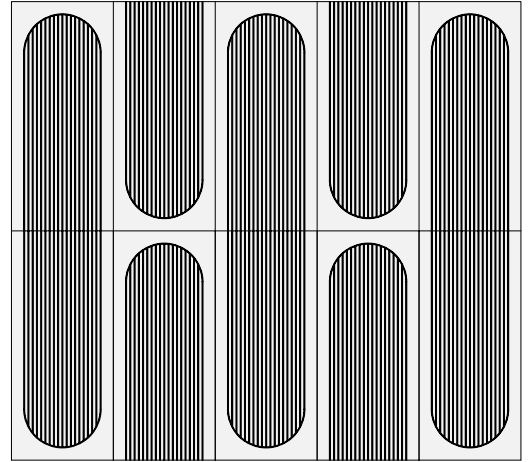
Layout 2



Layout 3



Layout 4

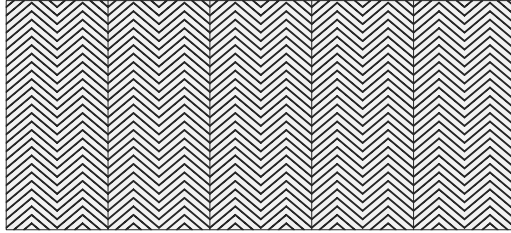


Recommended Layouts

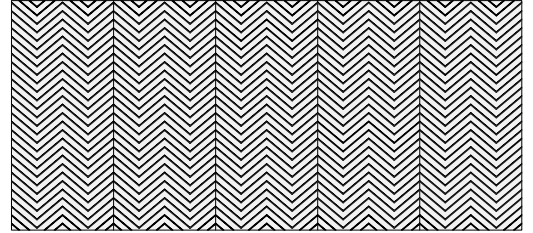
Chevron



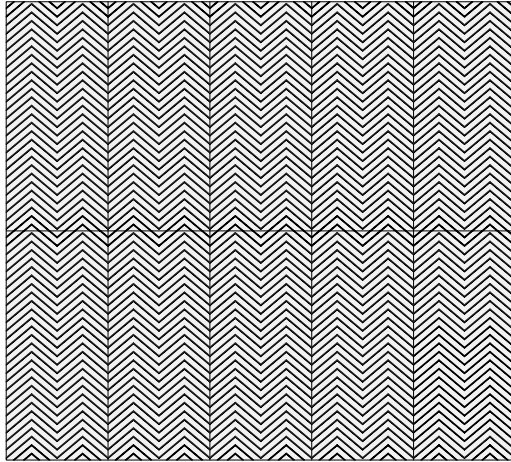
Layout 1



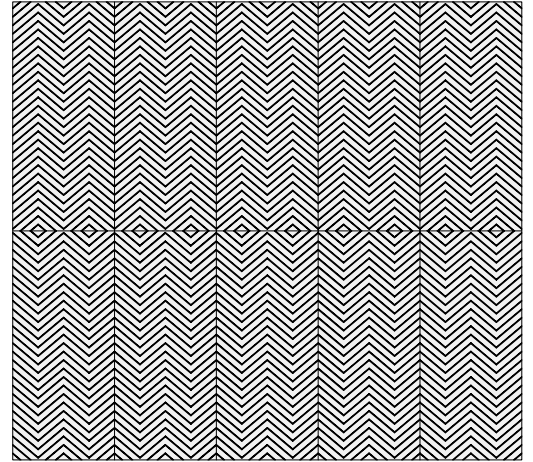
Layout 2



Layout 3

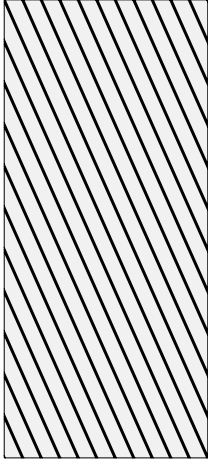


Layout 4

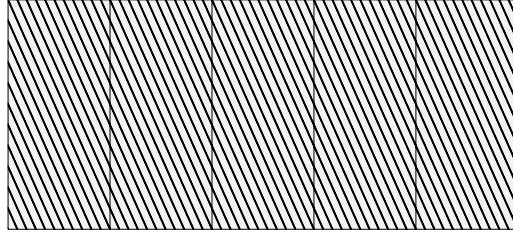


Recommended Layouts

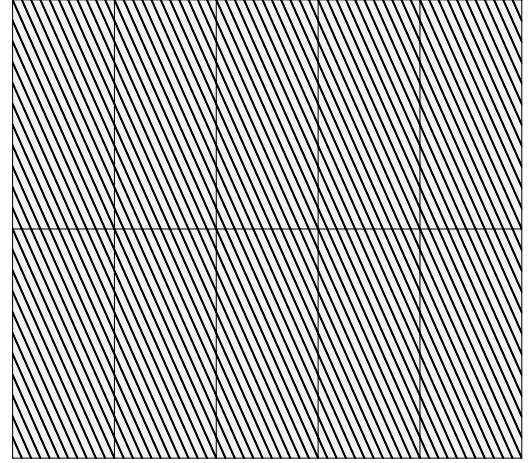
Diagonal



Layout 1

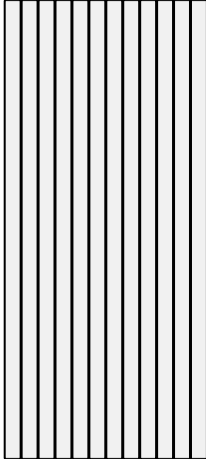


Layout 2

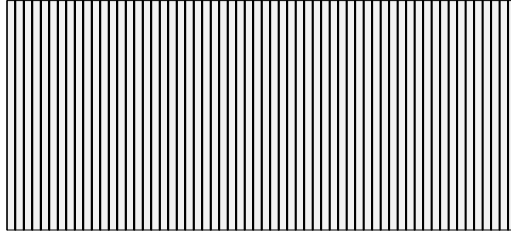


Recommended Layouts

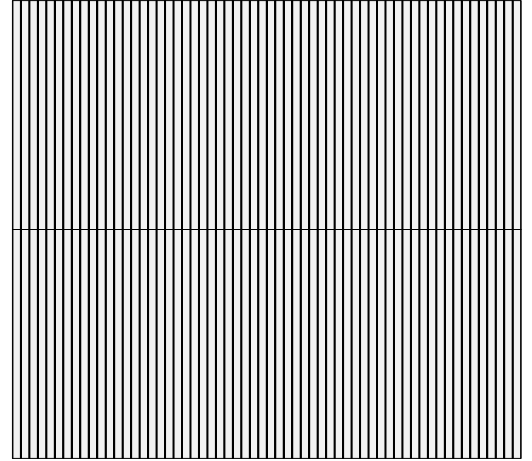
Fineline



Layout 1

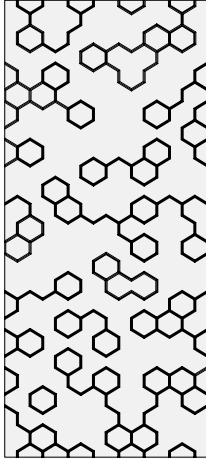


Layout 2

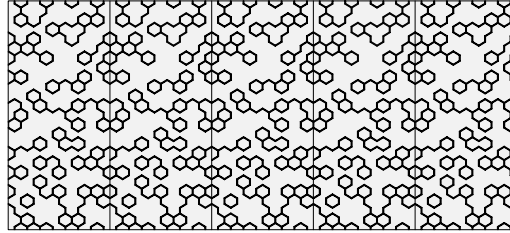


Recommended Layouts

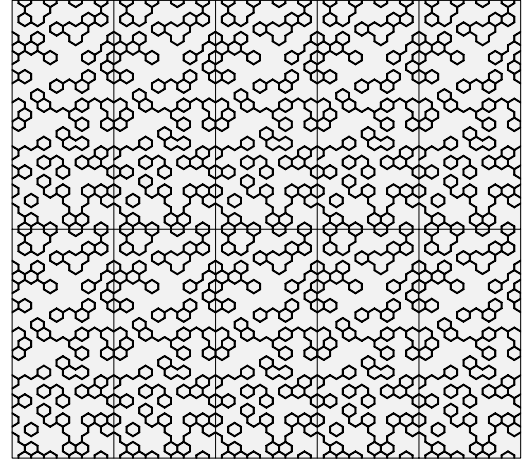
Formula



Layout 1

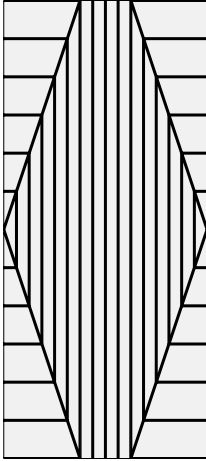


Layout 2

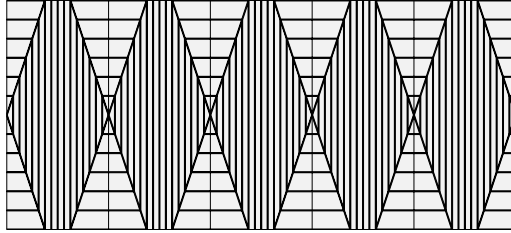


Recommended Layouts

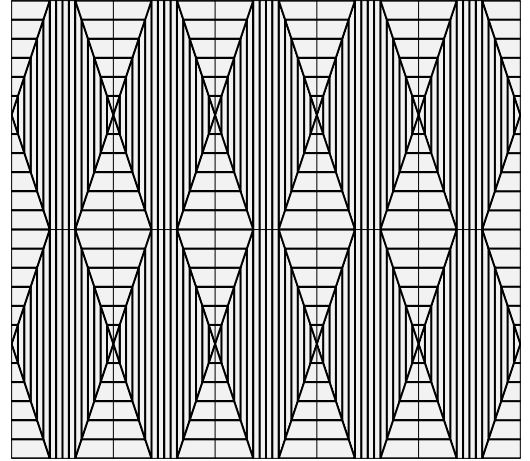
Harlequin



Layout 1

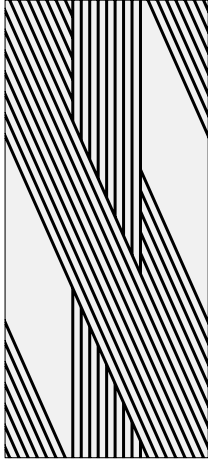


Layout 2

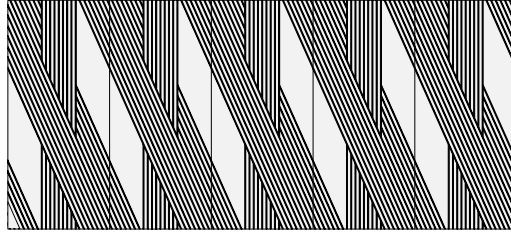


Recommended Layouts

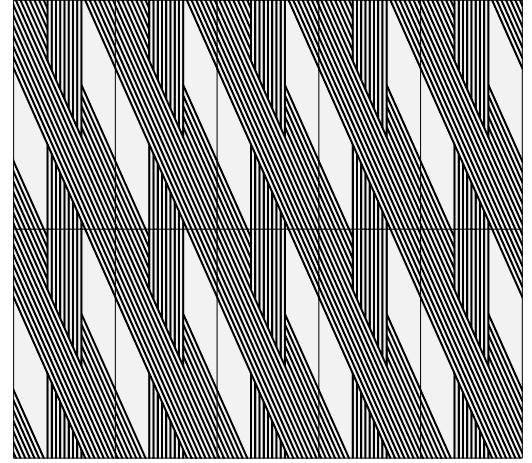
Intersect



Layout 1

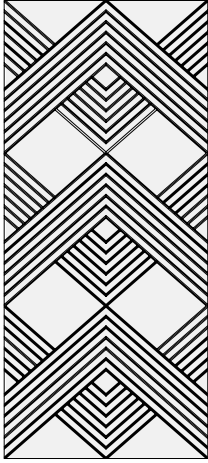


Layout 2

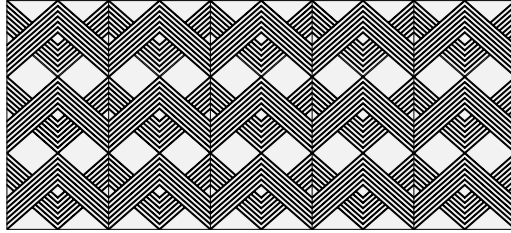


Recommended Layouts

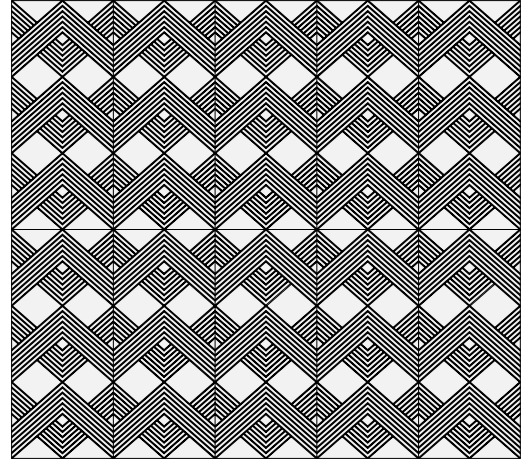
Knit



Layout 1

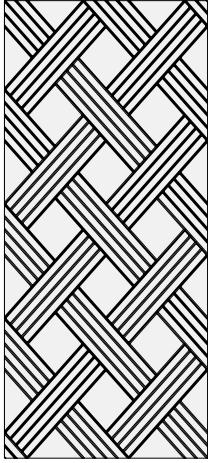


Layout 2

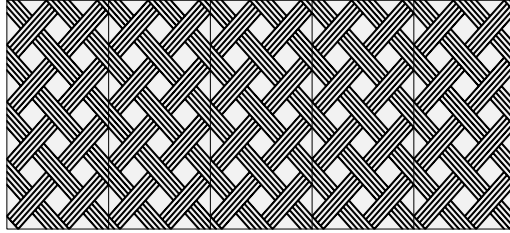


Recommended Layouts

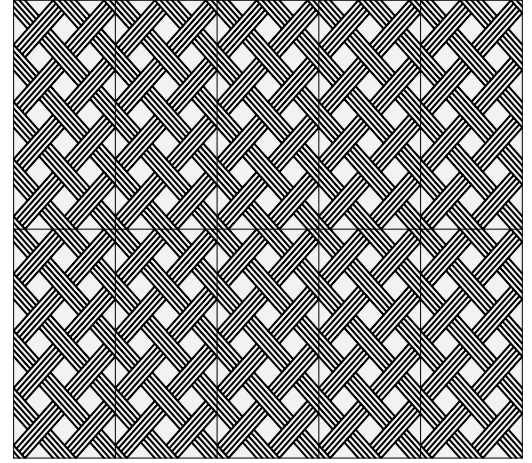
Lattice



Layout 1

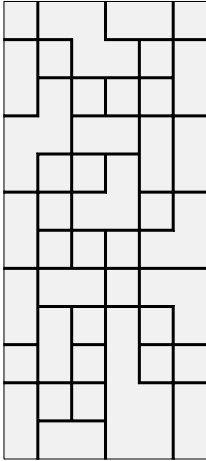


Layout 2

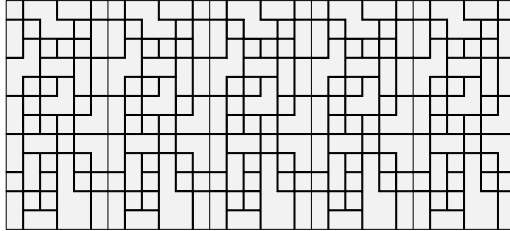


Recommended Layouts

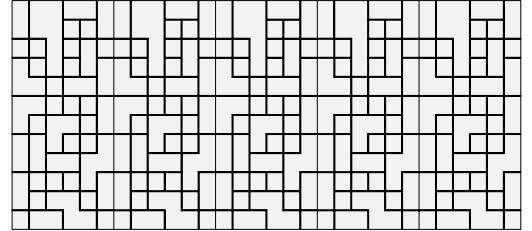
Maze



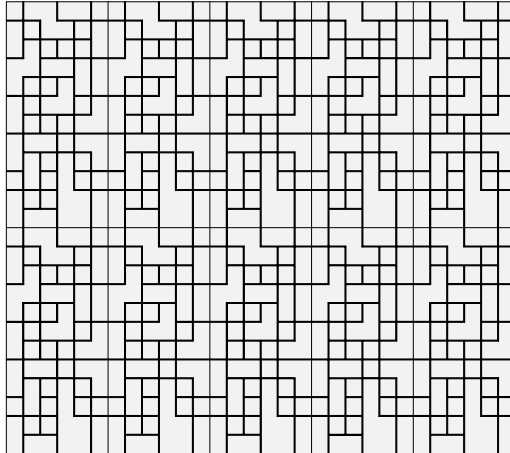
Layout 1



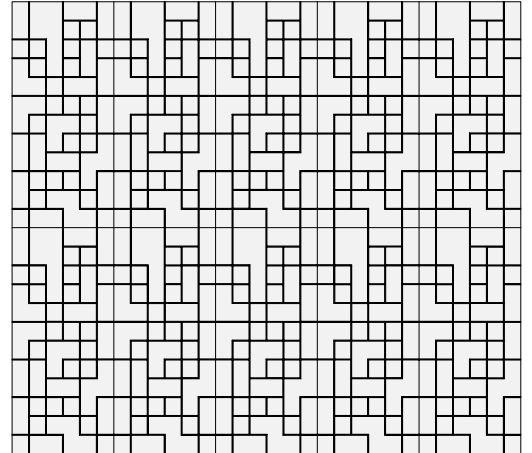
Layout 2



Layout 3

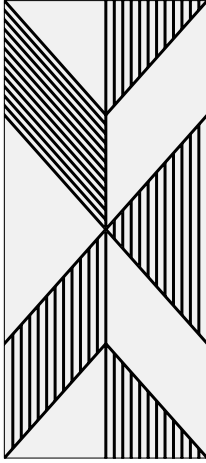


Layout 4

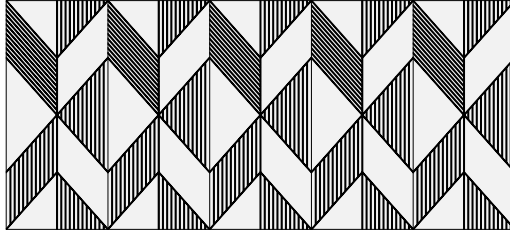


Recommended Layouts

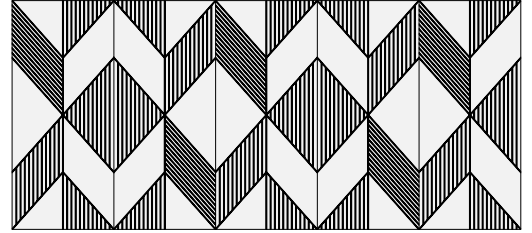
Metropolis



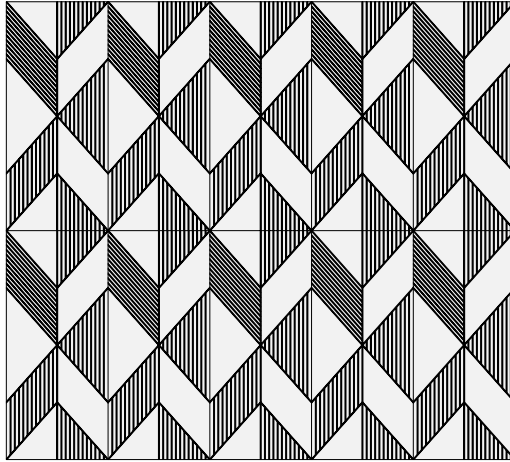
Layout 1



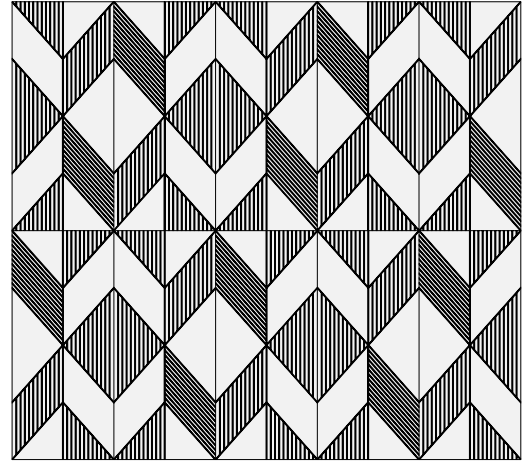
Layout 2



Layout 3

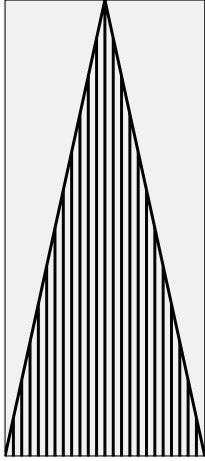


Layout 4

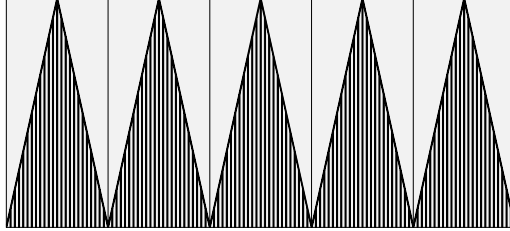


Recommended Layouts

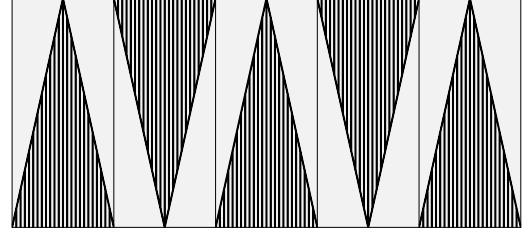
Pennant



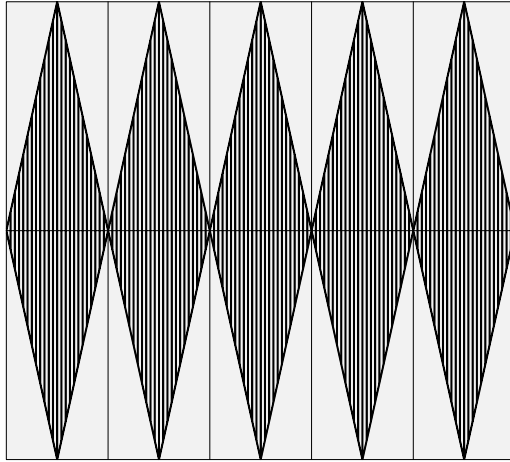
Layout 1



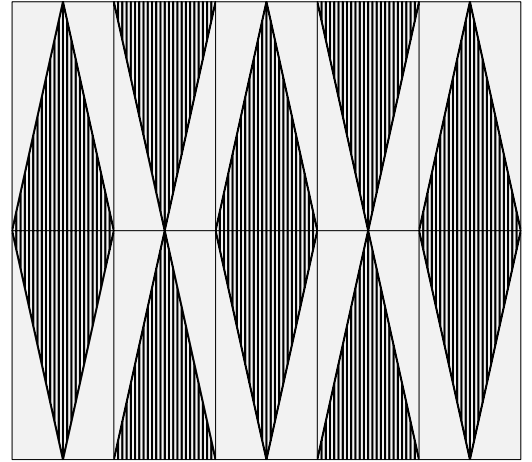
Layout 2



Layout 3

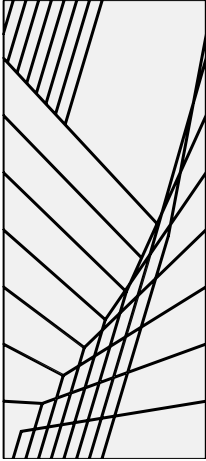


Layout 4

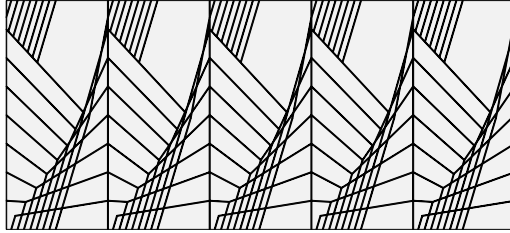


Recommended Layouts

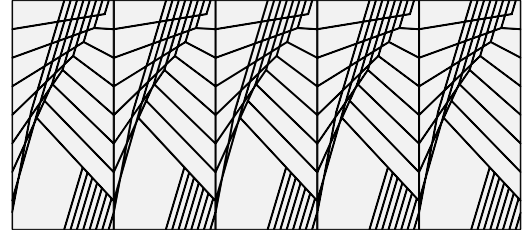
Prism



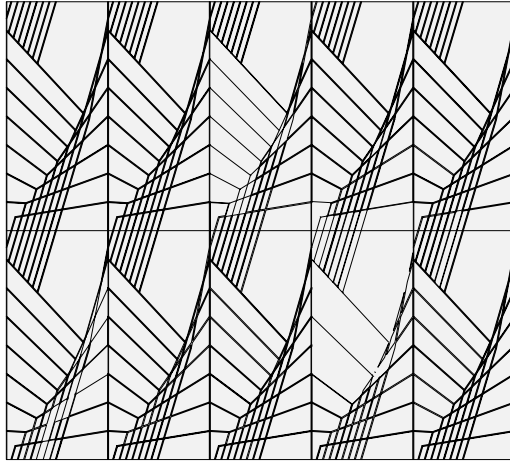
Layout 1



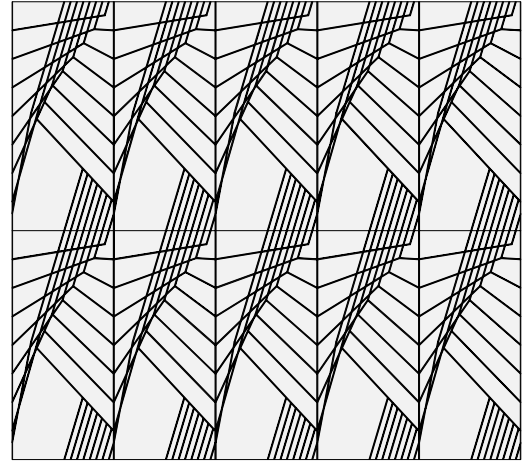
Layout 2



Layout 3

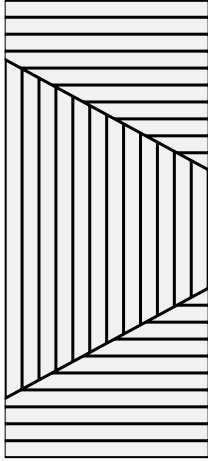


Layout 4

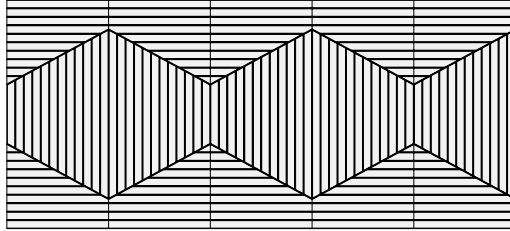


Recommended Layouts

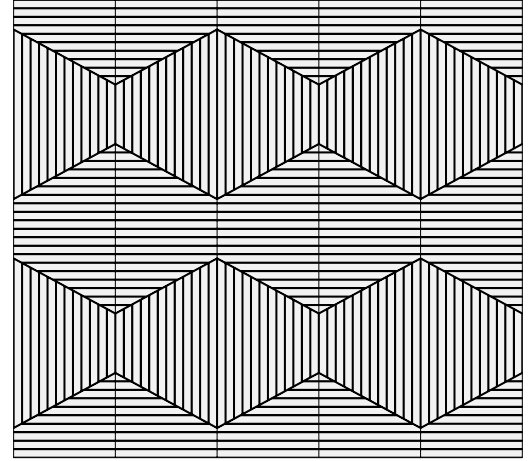
Pulse



Layout 1

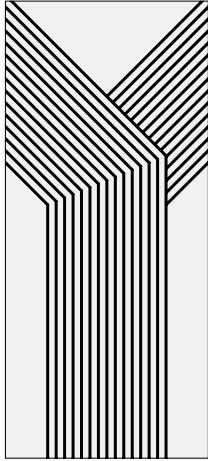


Layout 2

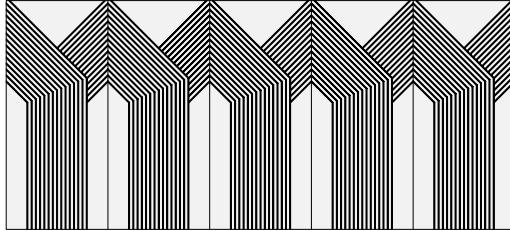


Recommended Layouts

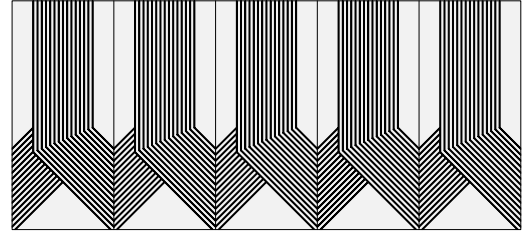
Rowhouse



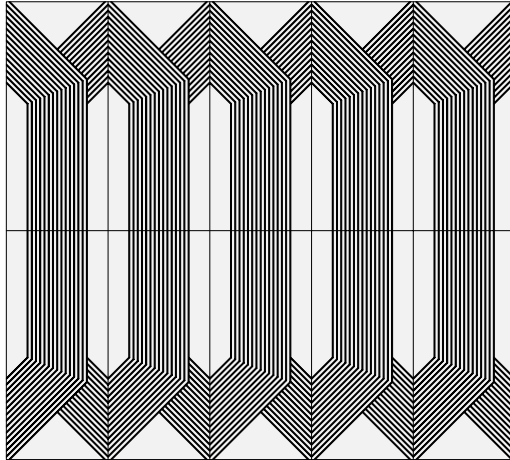
Layout 1



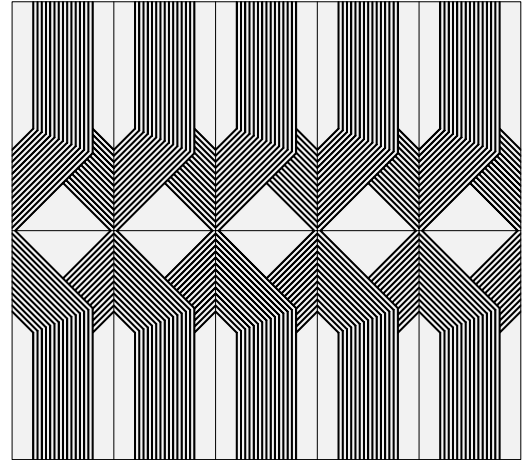
Layout 2



Layout 3

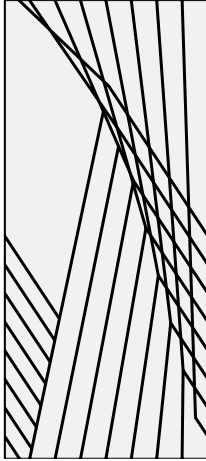


Layout 4

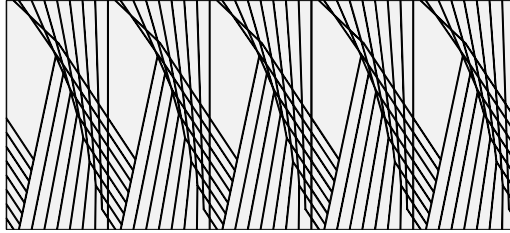


Recommended Layouts

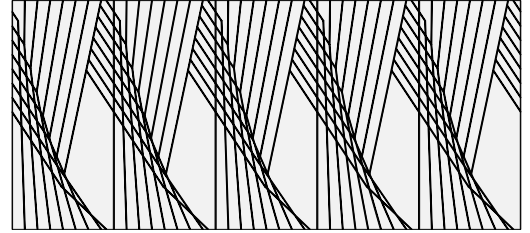
Spirograph



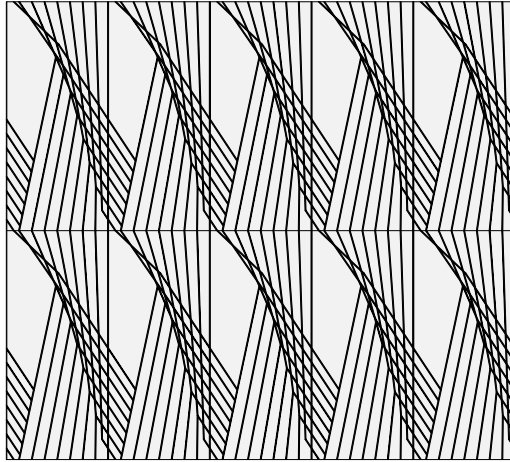
Layout 1



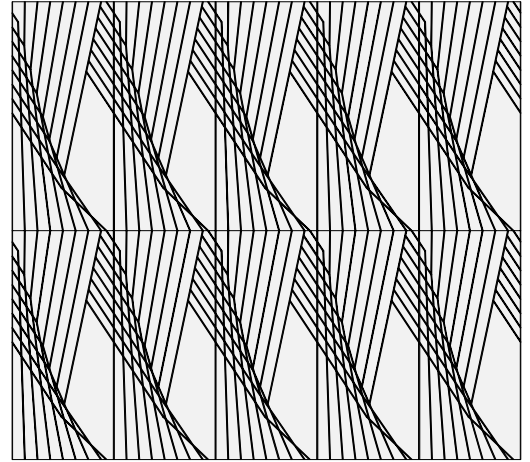
Layout 2



Layout 3

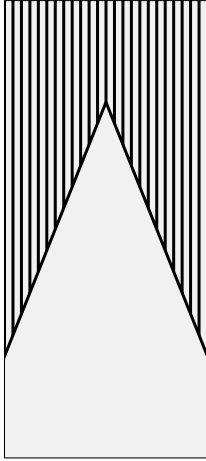


Layout 4

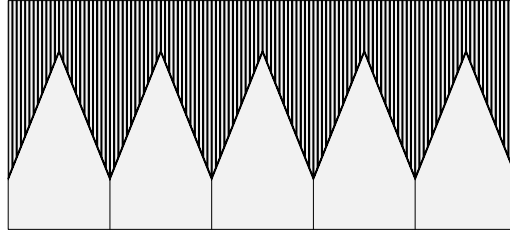


Recommended Layouts

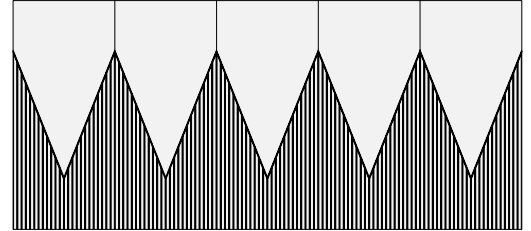
Summit



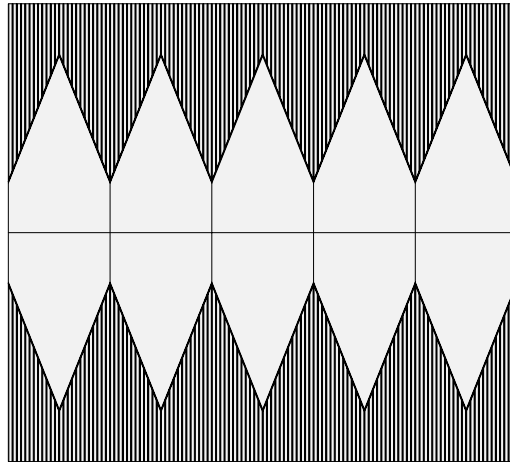
Layout 1



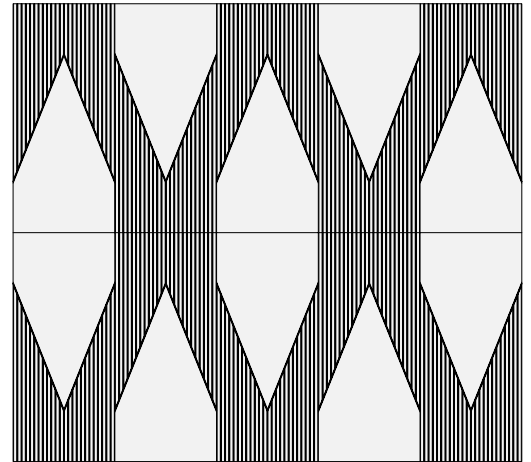
Layout 2



Layout 3

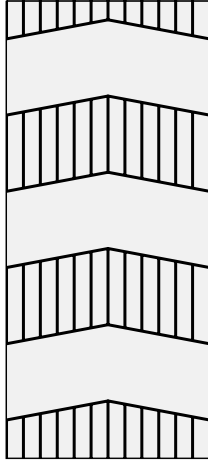


Layout 4

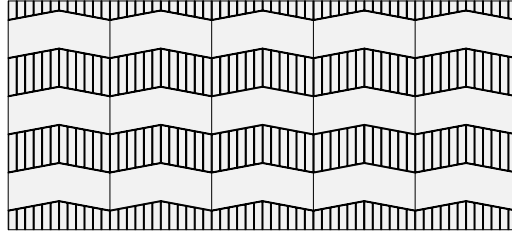


Recommended Layouts

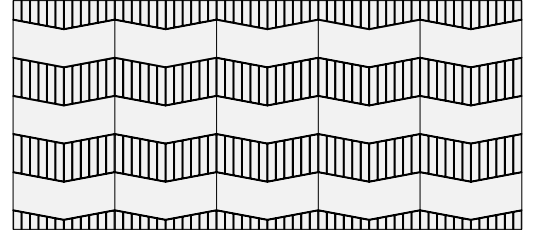
Track



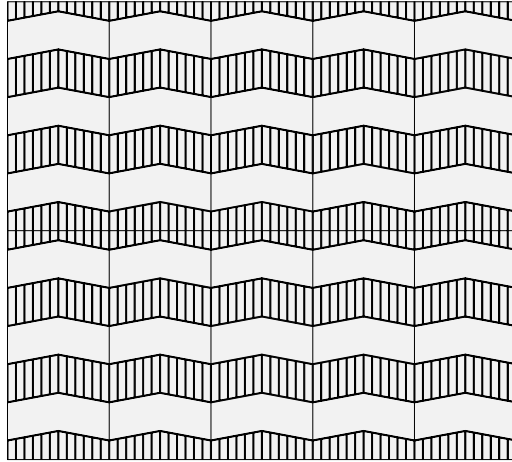
Layout 1



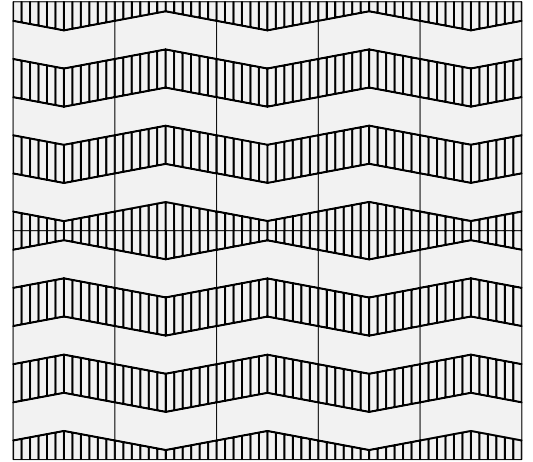
Layout 2



Layout 3

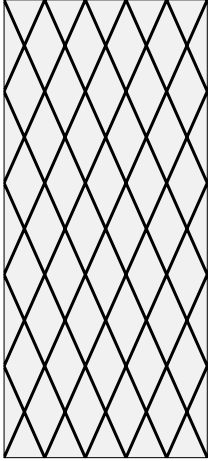


Layout 4

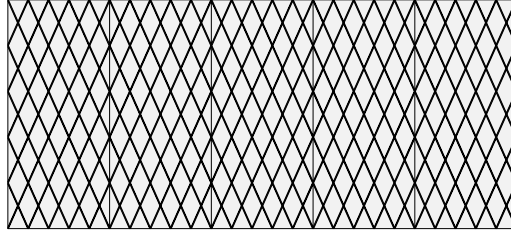


Recommended Layouts

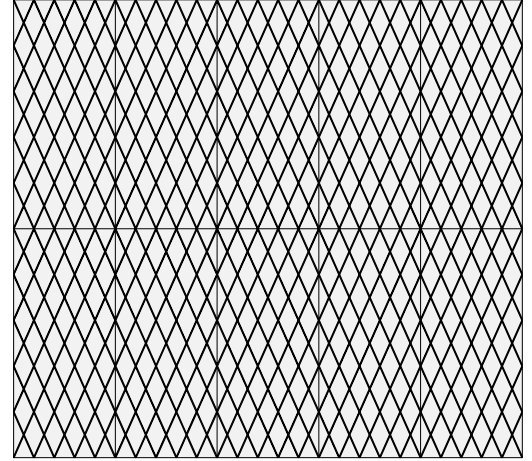
Trellis



Layout 1

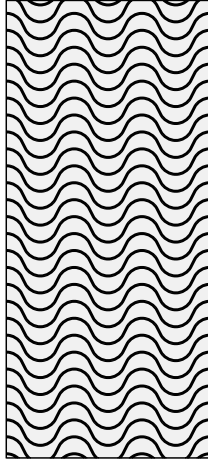


Layout 2

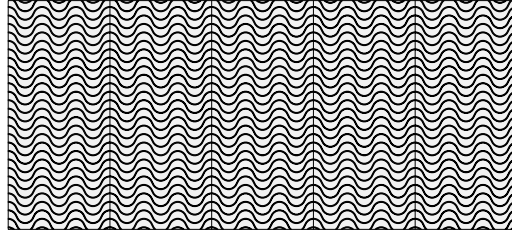


Recommended Layouts

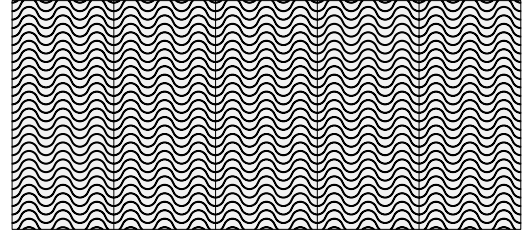
Wavelength



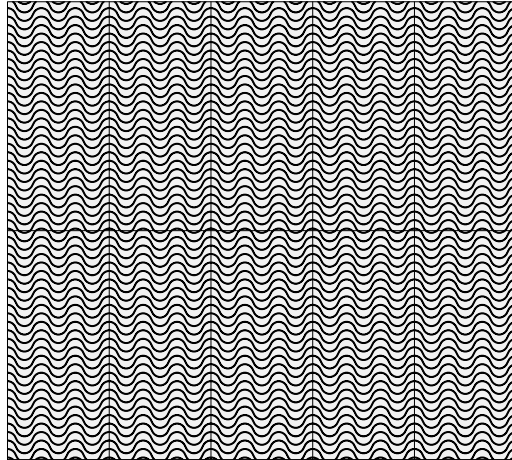
Layout 1



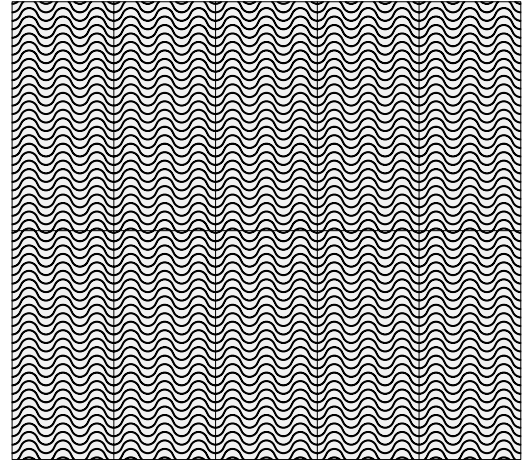
Layout 2



Layout 3

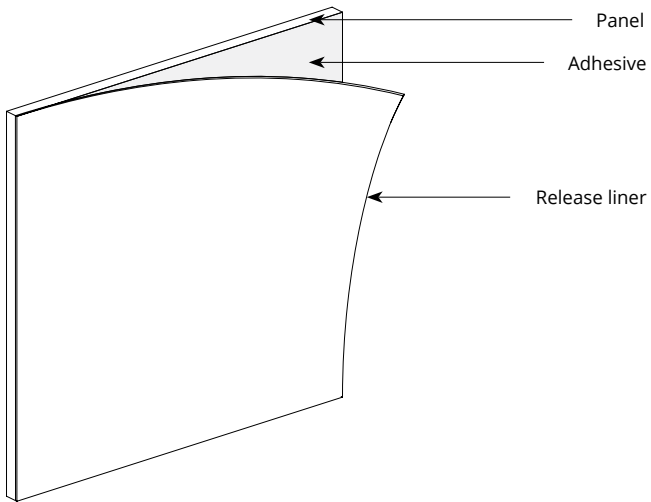


Layout 4

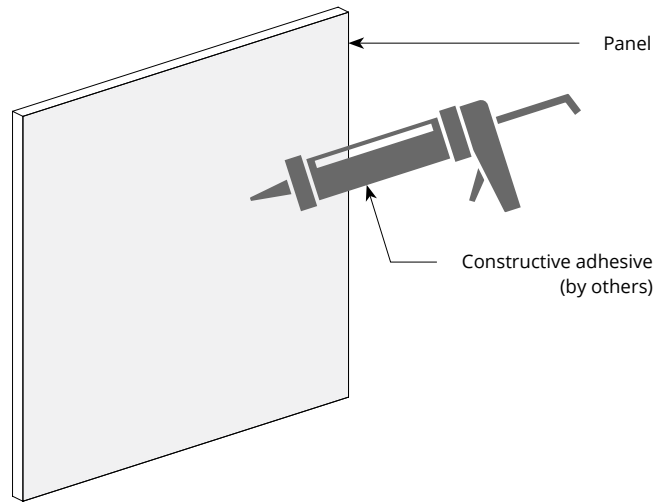


Mounting Methods

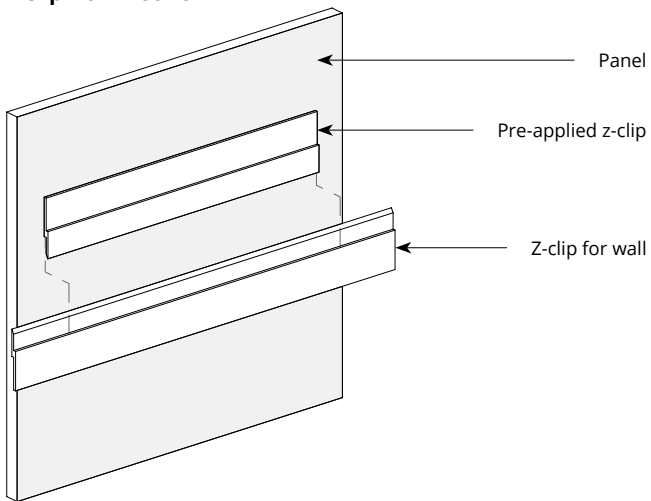
Adhesive backing



Construction adhesive



Z-clip wall mount



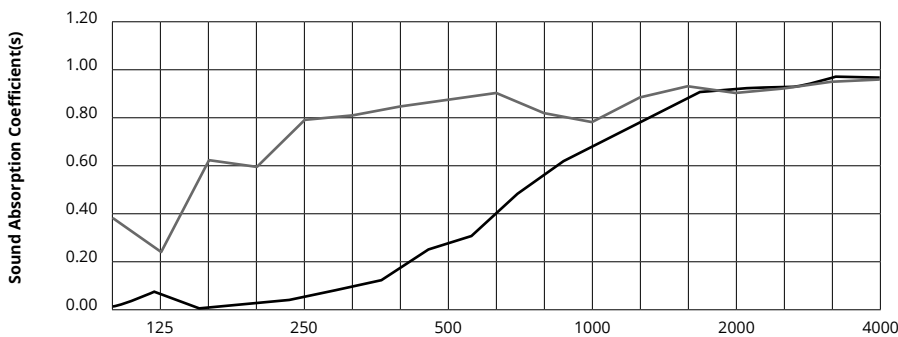
* For wall mount applications only.



Call **800.966.8557** with questions or visit **acoufelt.com** for more product information, downloads, and colorways.

Acoustic Performance

Test Method	ASTM C432-09a
Install Method	A
Rating Method	ISO 11654-1997
Test Results	<p>12mm NRC 0.45, no air gap NRC 0.54, 12mm air gap NRC 0.64, 20mm air gap SAA 0.43, no air gap SAA 0.54, 12mm air gap</p> <p>24mm NRC 0.60, no air gap SAA 0.55, no air gap</p>



	Frequency f (Hz)	125	250	500	1000	2000	4000	NRC
	12mm	0.06	0.02	0.23	0.61	0.89	0.95	0.45
	24mm	0.02	0.57	0.41	0.58	0.87	0.85	0.60

What is a Noise Reduction Coefficient (NRC)?

You'll find the NRC rating in the specifications of all of our products. This acronym stands for Noise Reduction Coefficient, and is expressed as a single number, a rating that describes the degree to which acoustic products can absorb sound.

You can use NRC values to understand the overall performance of our acoustic wall and ceiling products. The higher the NRC, the better the product is at soaking up the sound.

Performance Indices: Noise Reduction Coefficient (NRC) results represent the absorption coefficients measured at the one third octave bands at 125, 250, 500, 1000, 2000 and 4000 Hz rounded to the nearest 0.05. Acoustic testing has been performed according to the methods mentioned above. Customization of installation of the product could alter the results. Sound Absorption Average (SAA) indicates the absorption coefficient average for the twelve one-third octave bands ranging between 200 and 2500 Hz.